

**DELIVERING  
JANUARY 2025**

**209,919 SF AVAILABLE**



# HAZLETON EXCHANGE

151 N CHESTNUT HILL  
BUILDING 200, HAZLETON, PA

**NEWMARK**

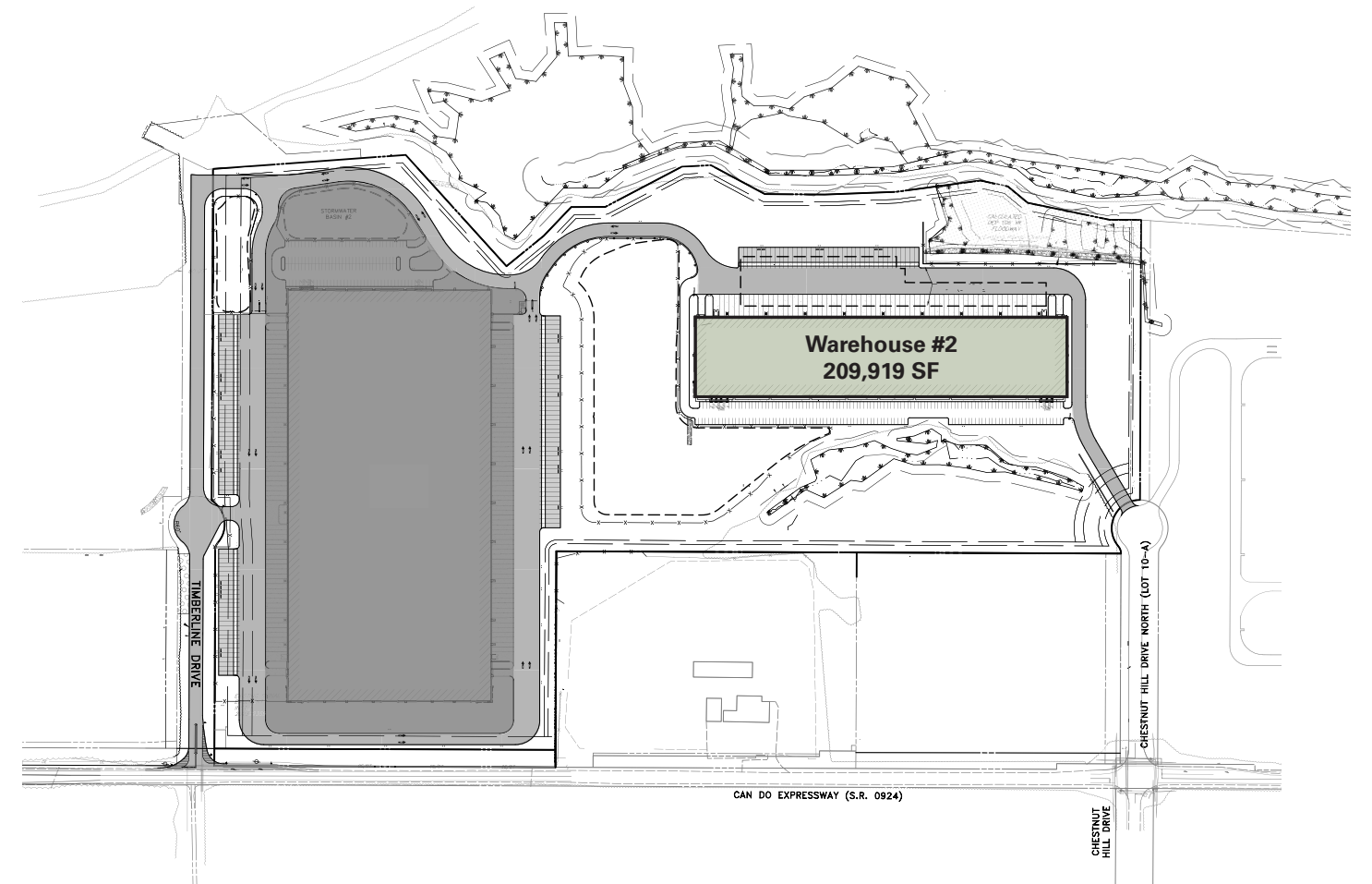
**FLINT**  
DEVELOPMENT



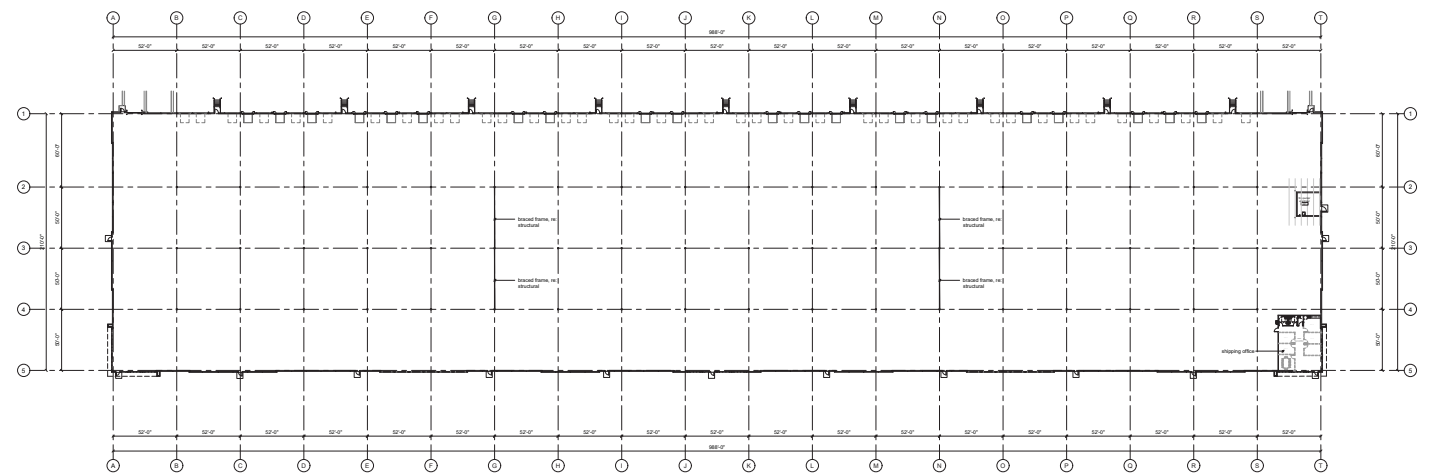
## BUILDING INFO

Total SF	209,919	Lighting	LED @ 30 FC
Office SF	2,500	Sprinkler	ESFR
Minimum Clear Ht	36'	Trailer Parking	40
Configuration	Rear Load	Car Parking	202
Dock doors	59	Floor Slab	7"
Drive-in doors	2	Construction	Reinforced Tilt-Wall
Dimensions	210' x 988'	Electrical Service	3,000 amp 480/277v 3 phase
Column Spacing	50' X 52' 60' Speed Bay		

## SITE PLAN



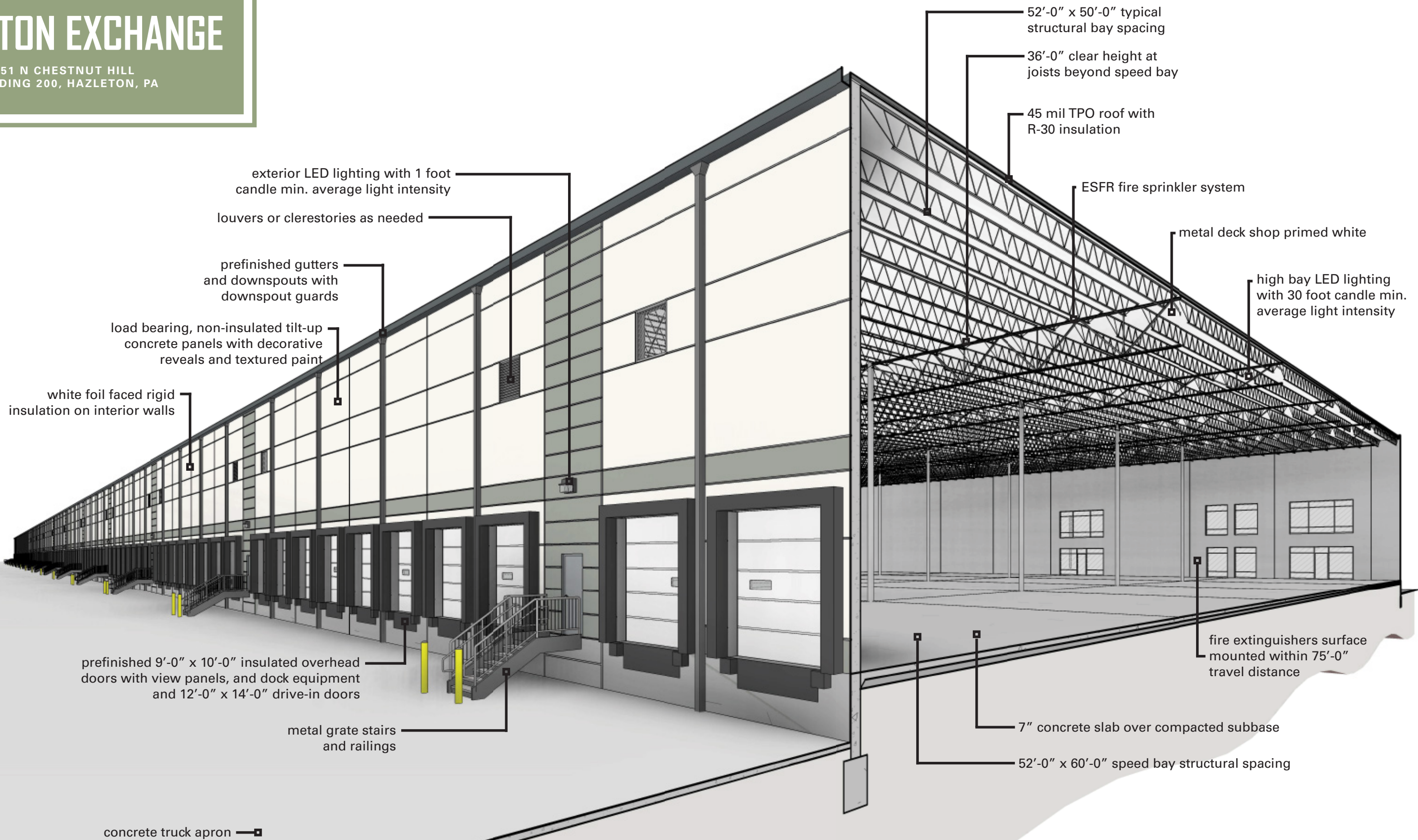
## FLOOR PLAN





# HAZLETON EXCHANGE

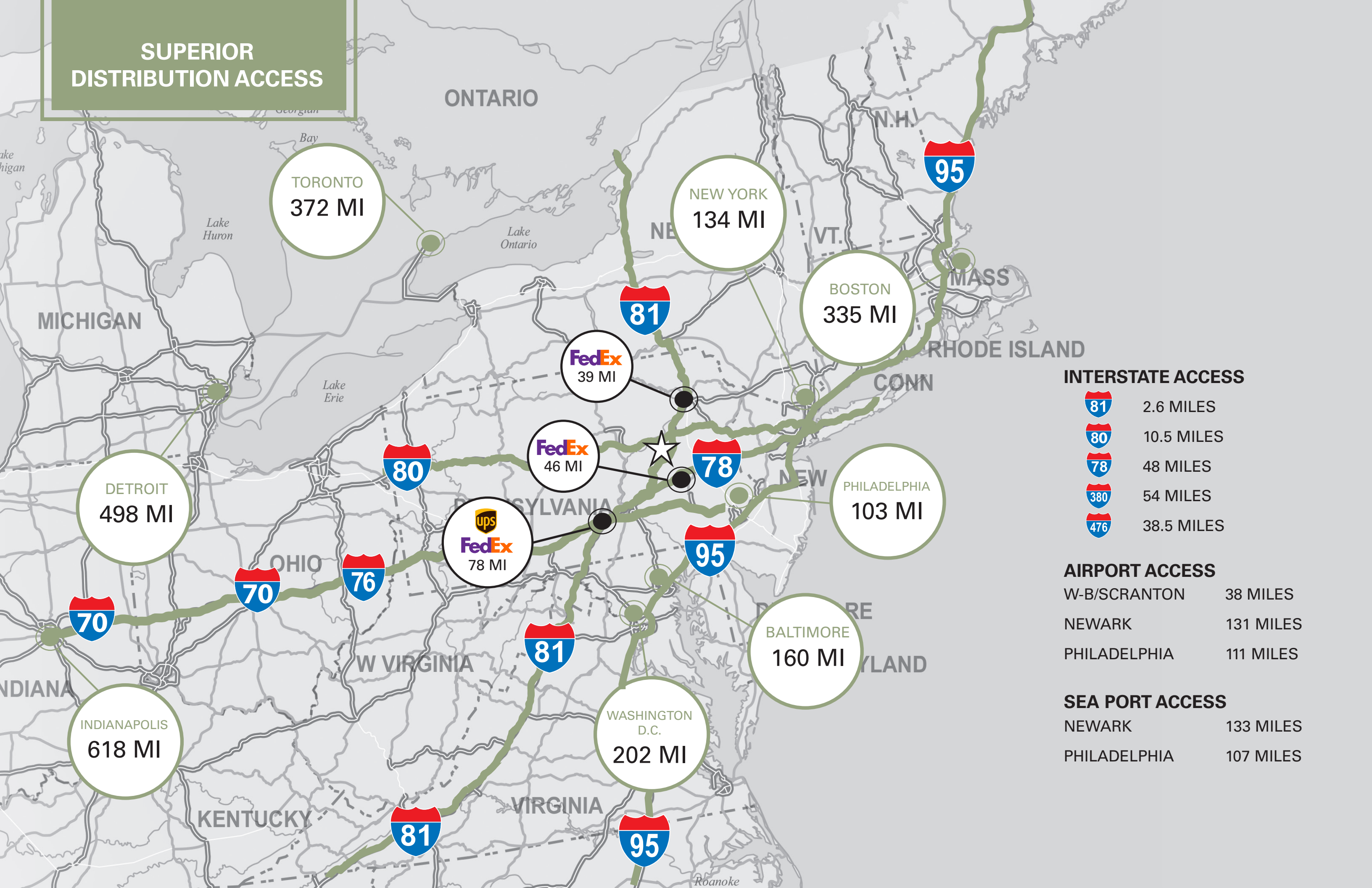
151 N CHESTNUT HILL  
BUILDING 200, HAZLETON, PA



**NEWMARK**



# SUPERIOR DISTRIBUTION ACCESS



TORONTO  
372 MI

NEW YORK  
134 MI

BOSTON  
335 MI

DETROIT  
498 MI

ups  
FedEx  
78 MI

FedEx  
39 MI

FedEx  
46 MI


PHILADELPHIA  
103 MI

INDIANAPOLIS  
618 MI

WASHINGTON  
D.C.  
202 MI

BALTIMORE  
160 MI

## INTERSTATE ACCESS

-  2.6 MILES
-  10.5 MILES
-  48 MILES
-  54 MILES
-  38.5 MILES

## AIRPORT ACCESS

- W-B/SCRANTON 38 MILES
- NEWARK 131 MILES
- PHILADELPHIA 111 MILES

## SEA PORT ACCESS

- NEWARK 133 MILES
- PHILADELPHIA 107 MILES





# NEWMARK

**Jim Belcher, SIOR**  
 Vice Chairman  
 t 610-755-6991  
 jim.belcher@nmrk.com

**Nick Pickard, CCIM**  
 Managing Director  
 t 610-755-6920  
 nick.pickard@nmrk.com

**Stephen J. Cook II**  
 Associate Director  
 t 610-755-6975  
 stephen.cook@nmrk.com

**Michael Spaeder**  
 Associate  
 t 610-755-6971  
 michael.spaeder@nmrk.com

1000 Continental Drive, Suite 200, King of Prussia, PA 19406 610-265-0600 nmrk.com

Licensed in Pennsylvania as Newmark Real Estate

The information contained herein has been obtained from sources deemed reliable but has not been verified and no guarantee, warranty or representation, either express or implied, is made with respect to such information. Terms of sale or lease and availability are subject to change or withdrawal without notice.