

PREMIER LAB/OFFICE CAMPUS

*±155,957 Square Feet*

AVAILABLE NOW  
600 Gateway Boulevard  
±8,711 SF

AVAILABLE 6/1/2026  
650 Gateway Boulevard  
±37,619 SF



ALEXANDRIA®  
*Building the Future of Life-Changing Innovation®*

SOUTH SAN FRANCISCO

**600/650  
GATEWAY  
BOULEVARD**







## Campus Features



Prime location with easy  
Highway 101 access



Highly functional lab/office  
space with new facade and  
lobby



Robust MEP systems for various  
lab/office uses



Walking distance to SSF Caltrain  
station and shuttle to BART and  
ferry



**600 Gateway** - shared  
autoclave/glass wash

**650 Gateway** - shared  
autoclave/glass wash





600/650 GATEWAY BOULEVARDE



SOUTH SAN FRANCISCO





600/650 GATEWAY BOULEVARDE



SOUTH SAN FRANCISCO





600/650 GATEWAY BOULEVARDE

SOUTH SAN FRANCISCO

# 600 Gateway

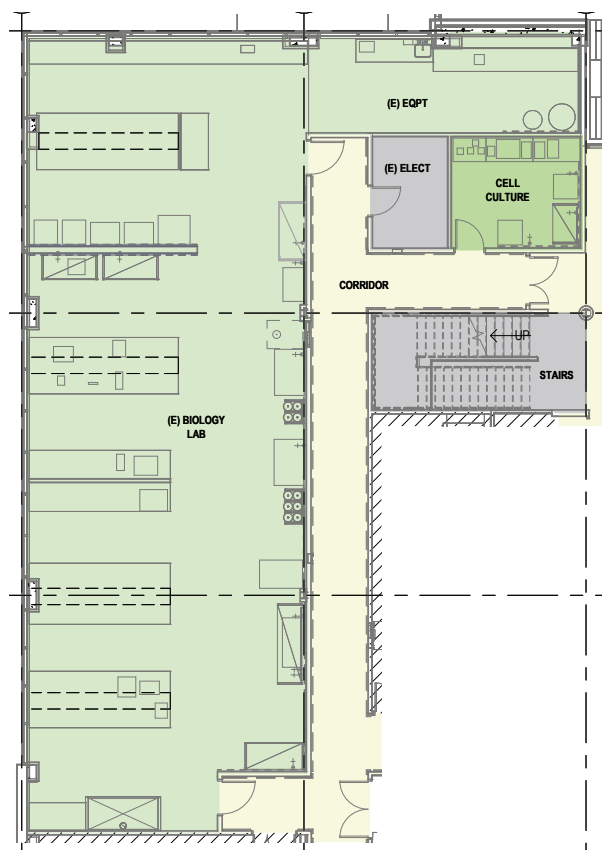
**±8,711**  
Square Feet Available

## Suite 102/201

### LEGEND

- Building Support
- Conference
- Collaboration
- Office
- Lab

### Suite 102



### Suite 201



# 650 Gateway

**±15,840**  
Square Feet Available

## Suite 100

### LEGEND

- Building Support
- Lobby/Reception
- Conference
- Collaboration
- Office
- Lab



*Suite 100*



# 650 Gateway

**±21,779**  
Square Feet Available

## Suite 200

### LEGEND

- Building Support
- Lobby/Reception
- Conference
- Collaboration
- Office
- Lab



## Suite 200



# Campus Transportation

These shuttles are free of charge for Gateway Campus employees. At this time, the shuttles provide access to Routes #1 and 2.



[CLICK HERE TO  
EXPLORE THEIR ROUTES](#)





15

MINS TO SSF CALTRAIN



8

MINS TO SFO



7

MINS TO SSF FERRY



# Transportation /Amenities



## RESTAURANTS

- 1 Esposto's
- 2 Two Fifty Restaurant
- 3 H. L. Peninsula Restaurant
- 4 Papa Joe's Restaurant
- 5 Peet's Coffee
- 6 Starbucks
- 7 Cafe 382
- 8 Buon Gusto
- 9 Di Napoli Ristorante & Pizzeria
- 10 Los Compadre Pizzeria
- 11 Subway
- 12 Thai Satay
- 13 Traverse - Coffee Bar & Food Hall
- 14 Focaccia Market and Bakery
- 15 Foundry & Lux
- 16 The Lighthouse - Bon Appetit
- 17 Amoura
- 18 The Cove at Oyster Point
  - Starbucks
  - Nick the Greek
  - The Sandwich Spot
  - Truffle Poke Bar



## FITNESS

- 1 Orange Theory Fitness
- 2 Yoga Six



## CHILDCARE

- 1 YMCA
- 2 ABC Family Day Care
- 3 Kinder Care College





**600/650  
GATEWAY  
BOULEVARD**  
SOUTH SAN FRANCISCO



**COLE  
SMITH**

Senior Managing Director  
650.480.2230  
Cole.Smith@jll.com  
Lic# 01948128

**GRANT  
YEATMAN**

Senior Managing Director  
510.465.9406  
Grant.Yeatman@jll.com  
Lic# 01972905

**SCOTT  
W. MILLER**

Executive Managing Director  
650.480.2199  
ScottW.Miller@jll.com  
Lic# 01457617

*Broker contact information*



**ALEXANDRIA®**  
*Building the Future of Life-Changing Innovation®*

*Alexandria contact information*

**TODD  
MILLER**

Senior Vice President | Leasing  
650.444.1295  
tmiller@are.com

**JEANETTE  
LI**

Senior Director | Market Research & Leasing  
415.321.3816  
jli@are.com

ALEXANDRIA REAL ESTATE EQUITIES, INC. | Confidential and Proprietary | Do Not Copy or Distribute | ALL RIGHTS RESERVED © 2025