

Multi-tenant Industrial Space For Lease

Unit 302 Available: 1,250± SF

Located off Coleman Avenue near San Jose International Airport

BOBBY FACCHINO

Senior Associate

Lic. # 02178873

408.318.0623

bobby@moinc.net

290-302 Brokaw Road, Santa Clara CA



PROPERTY OVERVIEW



Rental Rate: \$2.50 PSF Plus NNN

Space SF: 1,250± SF

Zoning: (ML) – Light Industrial

Rentable Building Area: 14,000± SF

Building Height: 15 Feet

Year Built: 1972

Multi-tenant Industrial For Lease

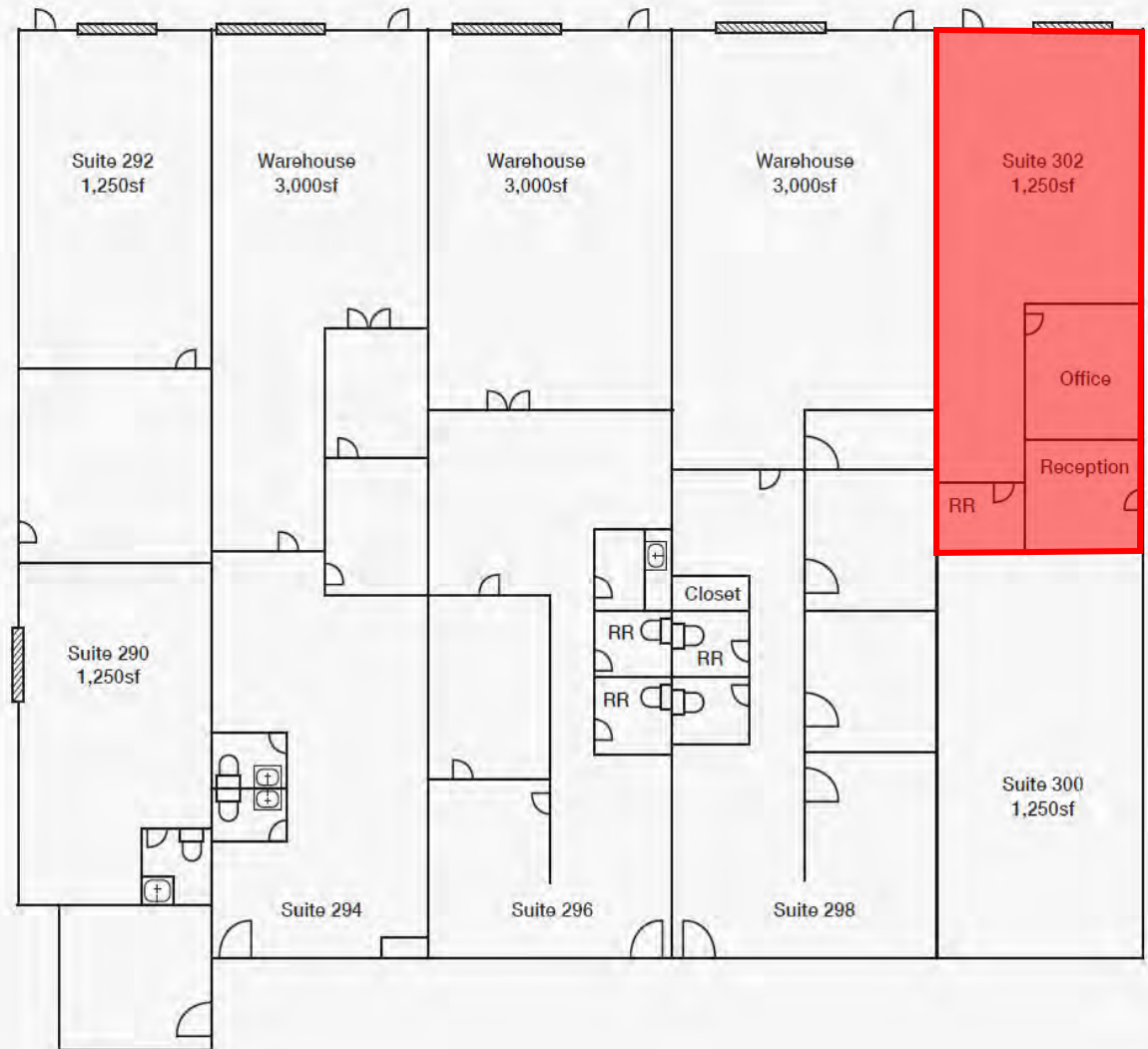
290-302 Brokaw Road, Santa Clara

- Unit 302: 1,250± SF - \$2.50 PSF Plus NNN.
- One private bathroom
- Conference room
- Lobby for customers to wait in near entrance
- Roll up door
- Located off Coleman Avenue near San Jose International Airport
- Strong demographics with average household incomes of \$181,570 in a 1-mile radius
- Easy access to HWY 101 & 880
- Exposure to over 25,000 vehicles per day

Brokaw Business Center

Key

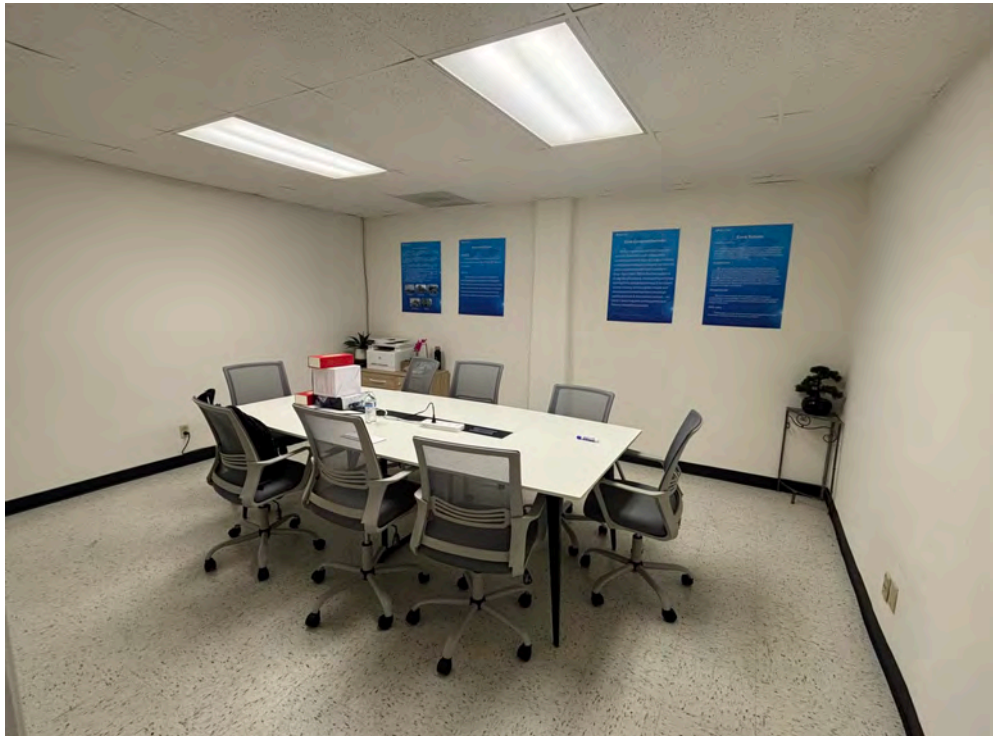
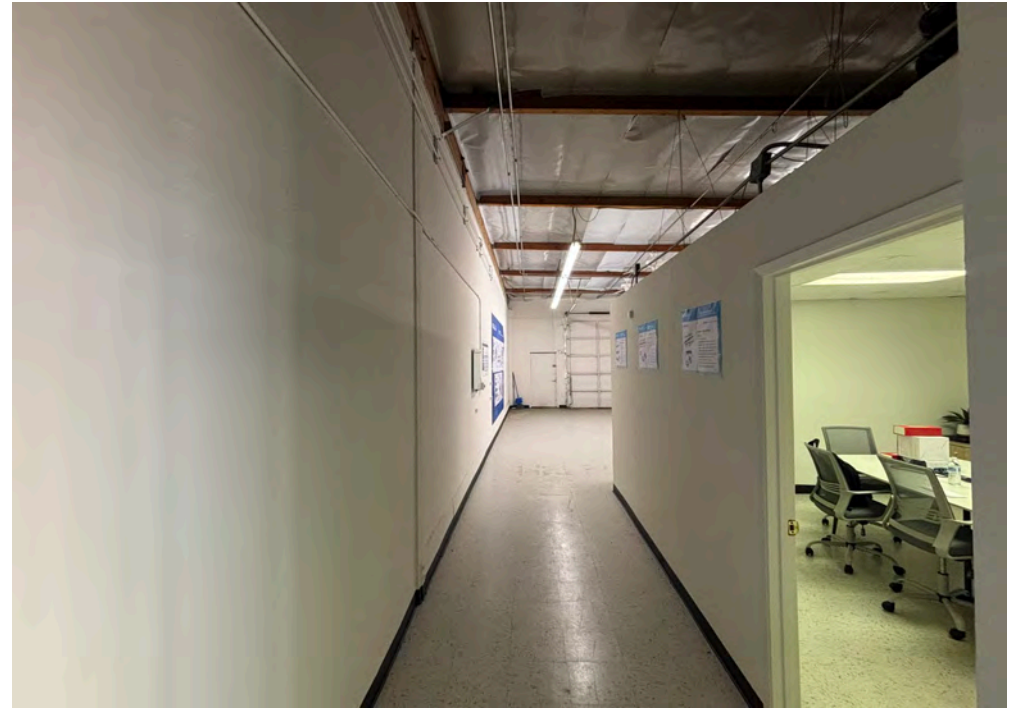
Tenant Name	Unit Number	Unit Size (SF)
You Solar	290	1,250
You Solar	292	1,250
ElQ Energy	294	3,000
FenzTech	296	3,000
Sousa's Garage Doors	298	3,000
Promac Machining Services	300	1,250
Available	302	1,250



Unit 302 (1,250± SF)



Unit 302 (1,250± SF)



Unit 302 (1,250± SF)







Unit 302 (1,250± SF)







COSTCO
WHOLESALE



Commercial S

2026 SUMMARY	1-MILE	3-MILE	5-MILE
Population	10,906	183,732	638,561
Households	2,883	71,320	234,519
Average Household Size	2.55	2.46	2.64
Owner Occupied Housing Units	904	26,370	91,037
Renter Occupied Housing Units	1,979	44,950	143,482
Median Age	24.6	36.8	36.4
Median Household Income	\$123,891	\$152,240	\$154,635
Average Household Income	\$179,174	\$198,873	\$205,045

290-302 Brokaw Road, Santa Clara



BOBBY FACCHINO

Senior Associate
Lic. #02178873
408.318.0623
bobby@moinc.net

MEACHAM/OPPENHEIMER, INC.
8 N San Pedro St. #300
San Jose, CA 95110
Tel. 408.378.5900
www.moinc.net

