



215-221

S. 20th Street

THE  
RITTENHOUSE  
Philadelphia

2,539 SF of Retail Space for Lease



**Paige Jaffe**  
Managing Director  
[paige.jaffe@am.jll.com](mailto:paige.jaffe@am.jll.com)

**Mallory Scaccetti**  
Senior Vice President  
[mallory.scaccetti@am.jll.com](mailto:mallory.scaccetti@am.jll.com)





## 2,539 SF Available for Lease

# 215-221

**S. 20th Street**

THE  
RITTENHOUSE  
Philadelphia

- Small shop opportunity with expansive frontage along vibrant 20th Street amidst many of the area's most favored restaurants, cafés and eateries
- Situated at the base of Philadelphia's acclaimed luxury hotel, The Rittenhouse
- Steps away from Rittenhouse Square Park and Philadelphia's premier shopping street
- Well positioned within dense and affluent Rittenhouse Square, with continuous traffic day-and-night
- Opportunity for additional space on second floor

### NEIGHBORING TENANTS





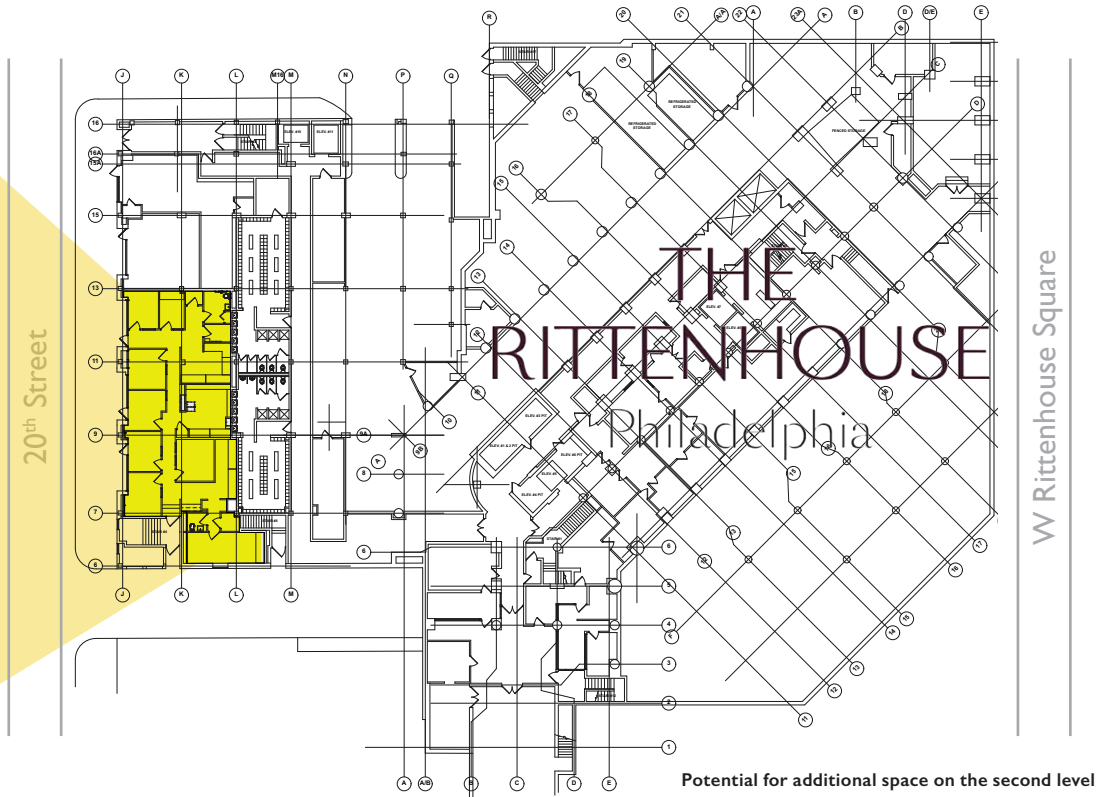
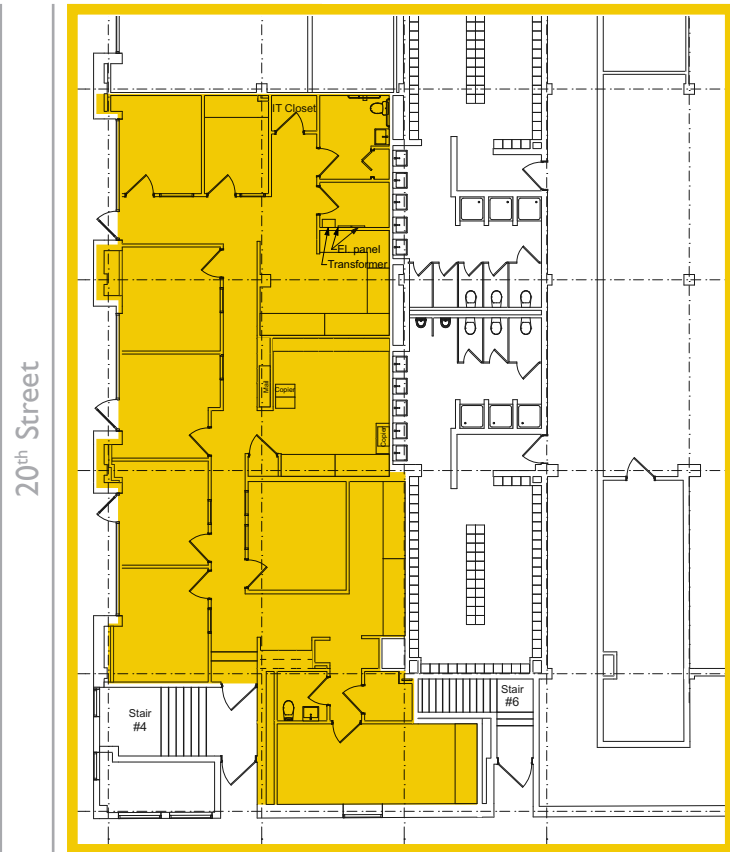
THE  
RITTENHOUSE  
Philadelphia



# 215-221 S. 20th Street

THE  
RITTENHOUSE  
Philadelphia

2,539 SF



JLL | Jones Lang LaSalle  
1650 Arch St. Suite 2500  
Philadelphia, PA 19103  
+1 215 988 5500

**Paige Jaffe**  
Managing Director  
[paige.jaffe@am.jll.com](mailto:paige.jaffe@am.jll.com)

**Mallory Scaccetti**  
Senior Vice President  
[mallory.scaccetti@am.jll.com](mailto:mallory.scaccetti@am.jll.com)

© 2020 Jones Lang LaSalle IP, Inc. All rights reserved. All information contained herein is from sources deemed reliable; however, no representation or warranty is made to the accuracy thereof.