

FOR LEASE > RETAIL SPACE





# Subway Evanston

101 N 2ND STREET, EVANSTON, WYOMING, 82930



## Property Information

- > Former Subway Location
- > Drive through Window
- > 1350 sq ft
- > Nearly an acre of parking
- > \$27.00 NNN

BUSINESS				5 miles
				
739	12,947	5,888	7,059	
Total Businesses	Total Daytime Population	Daytime Population: Workers	Daytime Population: Residents	
DEMOGRAPHICS		1 mile	3 miles	5 miles
Population				
2019 Total Population		4,581	12,384	12,824
2024 Total Population		4,421	12,054	12,486
Households				
2019 Total Households		1,779	4,531	4,686
2024 Total Households		1,715	4,404	4,556
2019 Average Household Size		2.55	2.69	2.69
Income				
2019 Median Household Income		\$40,516	\$50,284	\$50,494
2019 Average Household Income		\$63,545	\$72,590	\$72,637
2019 Per Capita Income		\$24,815	\$26,667	\$26,638

John Bushnell  
+1 801 947 8300  
john.bushnell@colliers.com

Lise Freeman  
+1 801 300 3228  
lfreemanrealestate@gmail.com



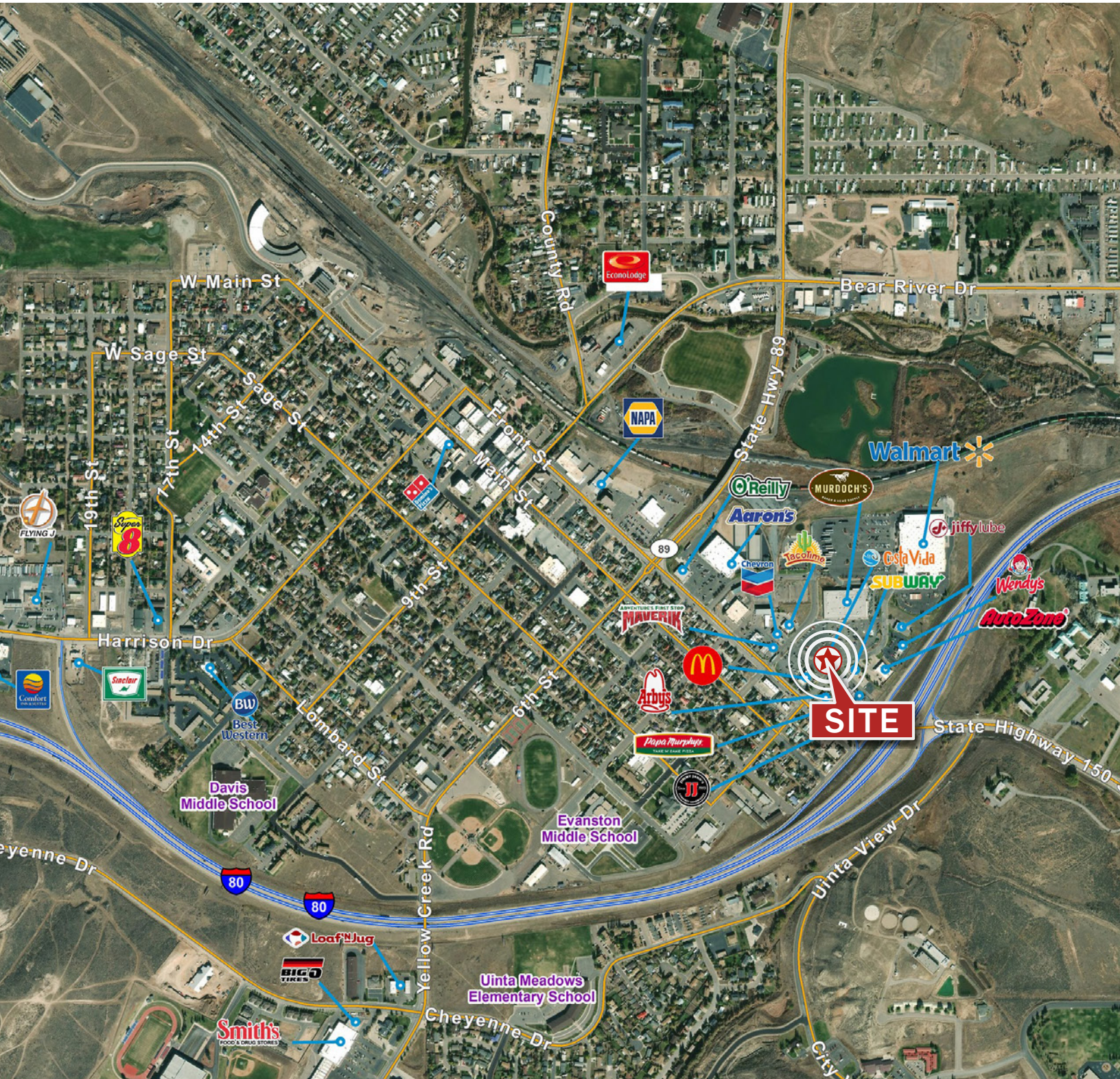
Colliers International  
6440 S Millrock Dr | Suite 500  
Salt Lake City, UT 84121  
P: +1 801 947 8300



FOR LEASE > RETAIL SPACE

# Subway Evanston

101 N 2ND STREET, EVANSTON, WYOMING, 82930



This document has been prepared by Colliers International for advertising and general information only. Colliers International makes no guarantees, representations or warranties of any kind, expressed or implied, regarding the information including, but not limited to, warranties of content, accuracy and reliability. Any interested party should undertake their own inquiries as to the accuracy of the information. Colliers International excludes unequivocally all inferred or implied terms, conditions and warranties arising out of this document and excludes all liability for loss and damages arising there from. This publication is the copyrighted property of Colliers International and/or its licensor(s). ©2020. All rights reserved.

Colliers International  
6440 S Millrock Dr | Suite 500  
Salt Lake City, UT 84121  
P: +1 801 947 8300



Accelerating success.