

# North Florida Office Building

10050 N Florida Ave, Tampa, FL 33612



- 3 Story Office Building
- Single Tenant Floor Available
- 75,000 Square Feet
- Ideal for Government Use
- Ample Free Surface Parking at 6 Spaces per 1,000 SF
- Less than 1 Mile from Floriland Mall/FI Dept of Children & Families
- Heavily Trafficked Location with North Florida Signage Opportunity
- Northwest Tampa Submarket
- Located off I-275 North of Busch Blvd & South of Fowler Avenue

## FULL FLOOR AVAILABILITY

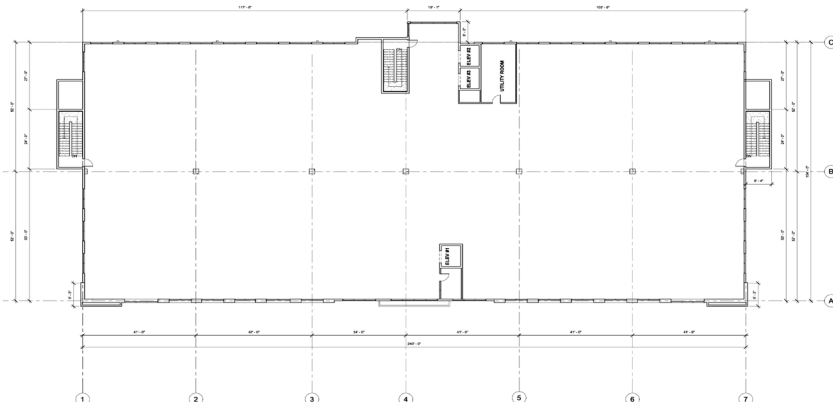
**25,000 Square Feet**  
per floor

### AMENITIES

- 12 Foot Ceilings with Floor to Ceiling Windows
- Ample Free Surface Parking

### Floor Plan

- 1st Floor - LEASED
- 2nd Floor - 25,000 SF
- 3rd Floor - 25,000 SF (Shown)



For more information, please contact:

**Angela Odell**

Managing Director

+1 813 514 2435

[angela.odell@cushwake.com](mailto:angela.odell@cushwake.com)

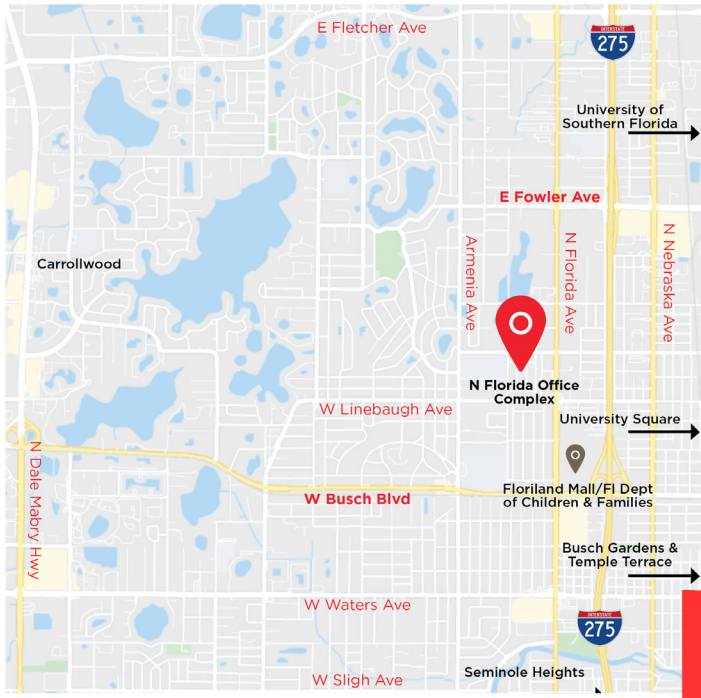


ACQUISITION • DEVELOPMENT • MANAGEMENT

©2025 Cushman & Wakefield. All rights reserved. The information contained in this communication is strictly confidential. This information has been obtained from sources believed to be reliable but has not been verified. NO WARRANTY OR REPRESENTATION, EXPRESS OR IMPLIED, IS MADE AS TO THE CONDITION OF THE PROPERTY (OR PROPERTIES) REFERENCED HEREIN OR AS TO THE ACCURACY OR COMPLETENESS OF THE INFORMATION CONTAINED HEREIN, AND SAME IS SUBMITTED SUBJECT TO ERRORS, OMISSIONS, CHANGE OF PRICE, RENTAL OR OTHER CONDITIONS, WITHDRAWAL WITHOUT NOTICE, AND TO ANY SPECIAL LISTING CONDITIONS IMPOSED BY THE PROPERTY OWNER(S). ANY PROJECTIONS, OPINIONS OR ESTIMATES ARE SUBJECT TO UNCERTAINTY AND DO NOT SIGNIFY CURRENT OR FUTURE PROPERTY PERFORMANCE.

# North Florida Office Building

10050 N Florida Ave, Tampa, FL 33612



**9,000 SF  
OUTPARCEL AVAILABLE**

**58 Parking Spaces**

## Demographics

- 26,000 - N Florida from Busch to Linebaugh
- 23,500 - N Florida from Linebaugh to Fowler
- Population within 5 Miles > 348,000
- Households within 5 Miles > 55,500
- Businesses within 5 Miles > 138,850



For more information, please contact:

**Angela Odell**

Managing Director

+1 813 514 2435

[angela.odell@cushwake.com](mailto:angela.odell@cushwake.com)



ACQUISITION • DEVELOPMENT • MANAGEMENT

©2025 Cushman & Wakefield. All rights reserved. The information contained in this communication is strictly confidential. This information has been obtained from sources believed to be reliable but has not been verified. NO WARRANTY OR REPRESENTATION, EXPRESS OR IMPLIED, IS MADE AS TO THE CONDITION OF THE PROPERTY (OR PROPERTIES) REFERENCED HEREIN OR AS TO THE ACCURACY OR COMPLETENESS OF THE INFORMATION CONTAINED HEREIN, AND SAME IS SUBMITTED SUBJECT TO ERRORS, OMISSIONS, CHANGE OF PRICE, RENTAL OR OTHER CONDITIONS, WITHDRAWAL WITHOUT NOTICE, AND TO ANY SPECIAL LISTING CONDITIONS IMPOSED BY THE PROPERTY OWNER(S). ANY PROJECTIONS, OPINIONS OR ESTIMATES ARE SUBJECT TO UNCERTAINTY AND DO NOT SIGNIFY CURRENT OR FUTURE PROPERTY PERFORMANCE.