

FOR SALE

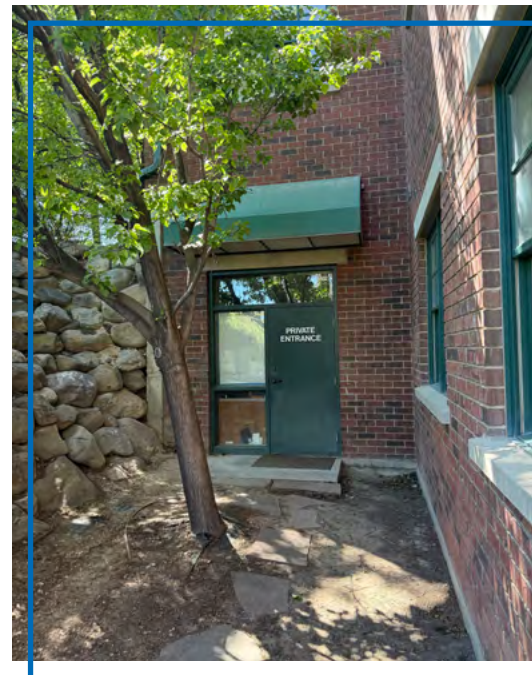
1258 W SOUTH JORDAN PKWY, #103



## PROPERTY DETAILS

1258 West South Jordan Parkway, #103  
South Jordan, UT 84095

- Sale Price: \$750,000
- Suite 103, 2,205 RSF for sale (Fully Built Out Medical Space)
- Centrally located for Wasatch Front
- Close to I-15
- Visible location on high traffic street
- Elevator
- Abundant parking
- Private outside entrance to office



NEWMARK

MOUNTAIN WEST

TAI J. BIESINGER

[tbiesinger@newmarkmw.com](mailto:tbiesinger@newmarkmw.com)

direct 801.913.4595

[View Profile](#)

FULL SERVICE  
COMMERCIAL REAL ESTATE

312 East South Temple

Salt Lake City, Utah 84111

Office 801.456.8800

[www.newmarkmw.com](http://www.newmarkmw.com)



# NEWMARK

**MOUNTAIN WEST**

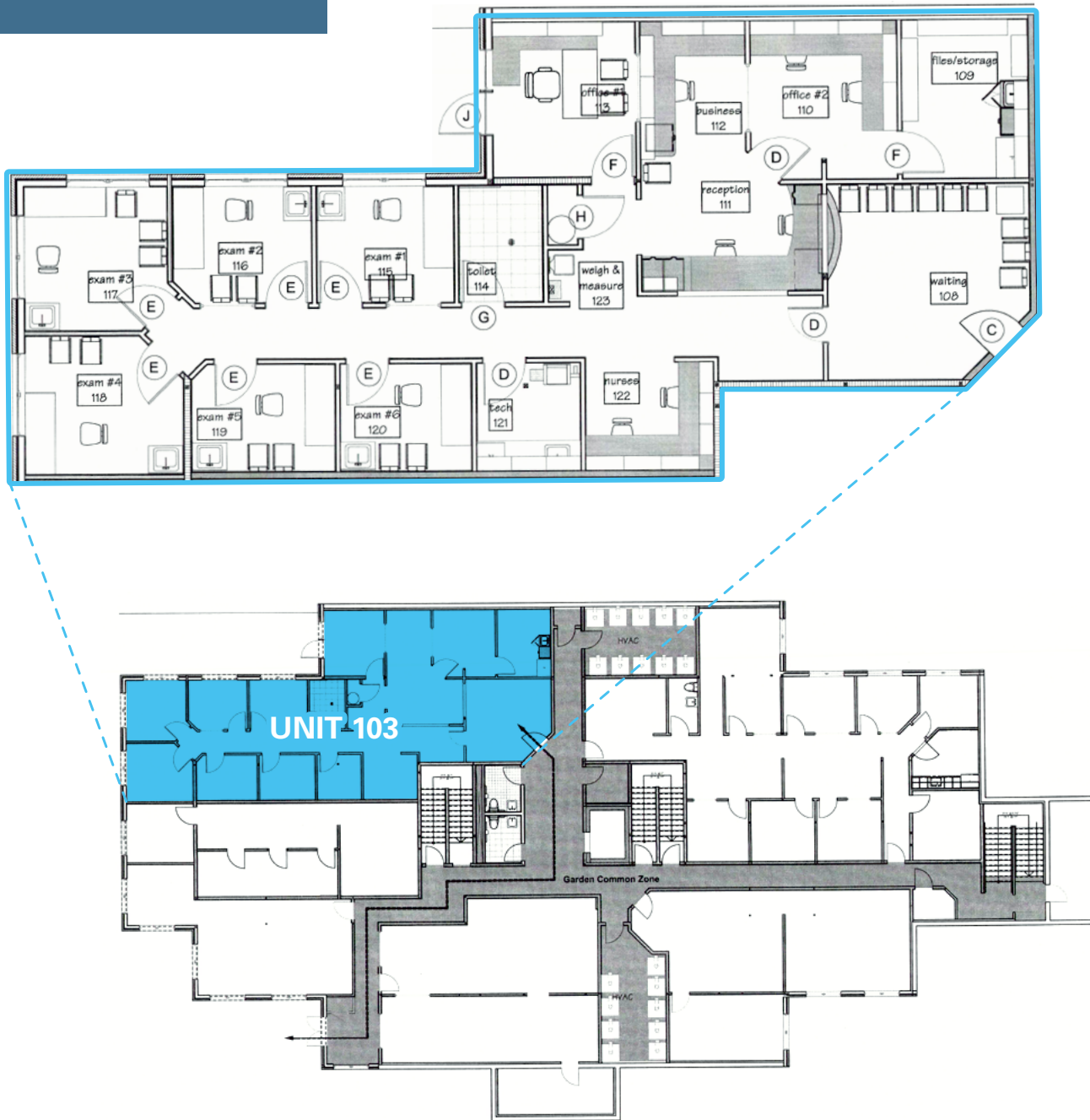
**TAI J. BIESINGER**  
tbiesinger@newmarkmw.com  
direct 801.913.4595  
[View Profile](#)



**FULL SERVICE  
COMMERCIAL REAL ESTATE**  
312 East South Temple  
Salt Lake City, Utah 84111  
Office 801.456.8800  
[www.newmarkmw.com](http://www.newmarkmw.com)

1258 W SOUTH JORDAN PKWY, #103

# FLOOR PLAN



# NEWMARK

**MOUNTAIN WEST**

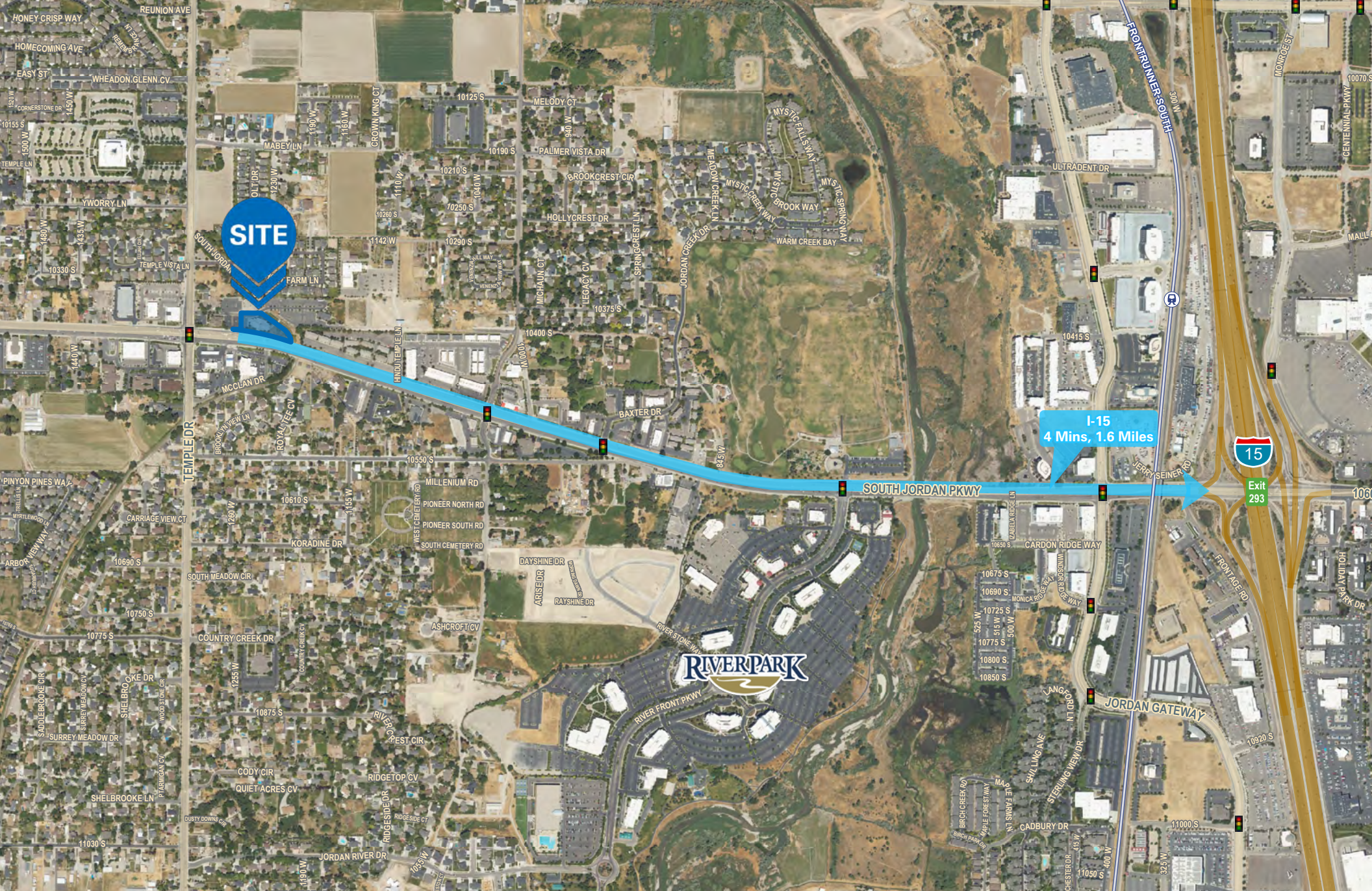
**TAI J. BIESINGER**  
tbiesinger@newmarkmw.com  
direct 801.913.4595  
[View Profile](#)

**FULL SERVICE  
COMMERCIAL REAL ESTATE**  
312 East South Temple  
Salt Lake City, Utah 84111  
Office 801.456.8800  
[www.newmarkmw.com](http://www.newmarkmw.com)



**TAI J. BIESINGER**  
 tbiesinger@newmarkmw.com  
 direct 801.913.4595  
[View Profile](#)

**FULL SERVICE  
 COMMERCIAL REAL ESTATE**  
 312 East South Temple  
 Salt Lake City, Utah 84111  
 Office 801.456.8800  
[www.newmarkmw.com](http://www.newmarkmw.com)



**NEWMARK**  
MOUNTAIN WEST

**TAI J. BIESINGER**  
tbiesinger@newmarkmw.com  
direct 801.913.4595  
[View Profile](#)

**FULL SERVICE  
COMMERCIAL REAL ESTATE**  
312 East South Temple  
Salt Lake City, Utah 84111  
Office 801.456.8800  
[www.newmarkmw.com](http://www.newmarkmw.com)