



RETAIL SPACE FOR LEASE

1703-1715 N. RAND ROAD PALATINE, IL



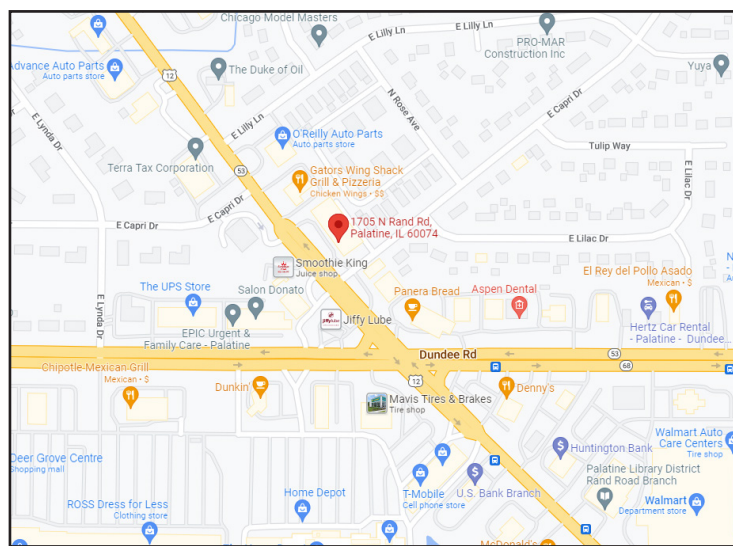
BUILDING FEATURES:

- 902 SF Quality Retail Space Available ASAP
- Heavy Traffic counts over 30,300 vehicles per day
- Close proximity to shopping and dining
- Located one block north of Dundee Rd on busy Rand Rd (Rt 12) near Rt-53
- Vacant suites are in move in condition
- Over 257,000 consumers in a 5 mile radius
- 24-hour tenant access & tenant controlled HVAC
- Ideal for retail, service or office users

- Recently Renovated with excellent curb appeal
- Tenant Signage on busy Rand Road
- Building Monument sign in the heart of the Rand Rd retail corridor
- See www.chicagolandcommercial.com for links to 3-D Virtual Tours for each space!!!
- **Rental Rate: \$26.00 PSF Gross**

AVAILABLE SPACE:

SUITE	SIZE (SF)	Rent	Available
1713	902 SF	\$1,950	9/1/25



FOR MORE INFORMATION:

RANDY OLCZYK
Direct: 847.246.9611
randy@chicagolandcommercial.com

TOM CALLAHAN
Direct: 847.246.9636
Tom@chicagolandcommercial.com



**Chicagoland
Commercial
REAL ESTATE**

4811 Emerson Ave Suite 112, Palatine, IL

[illegible]



RETAIL SPACE FOR LEASE

1703-1715 N. RAND ROAD PALATINE, IL

BUILDING PHOTOGRAPHS

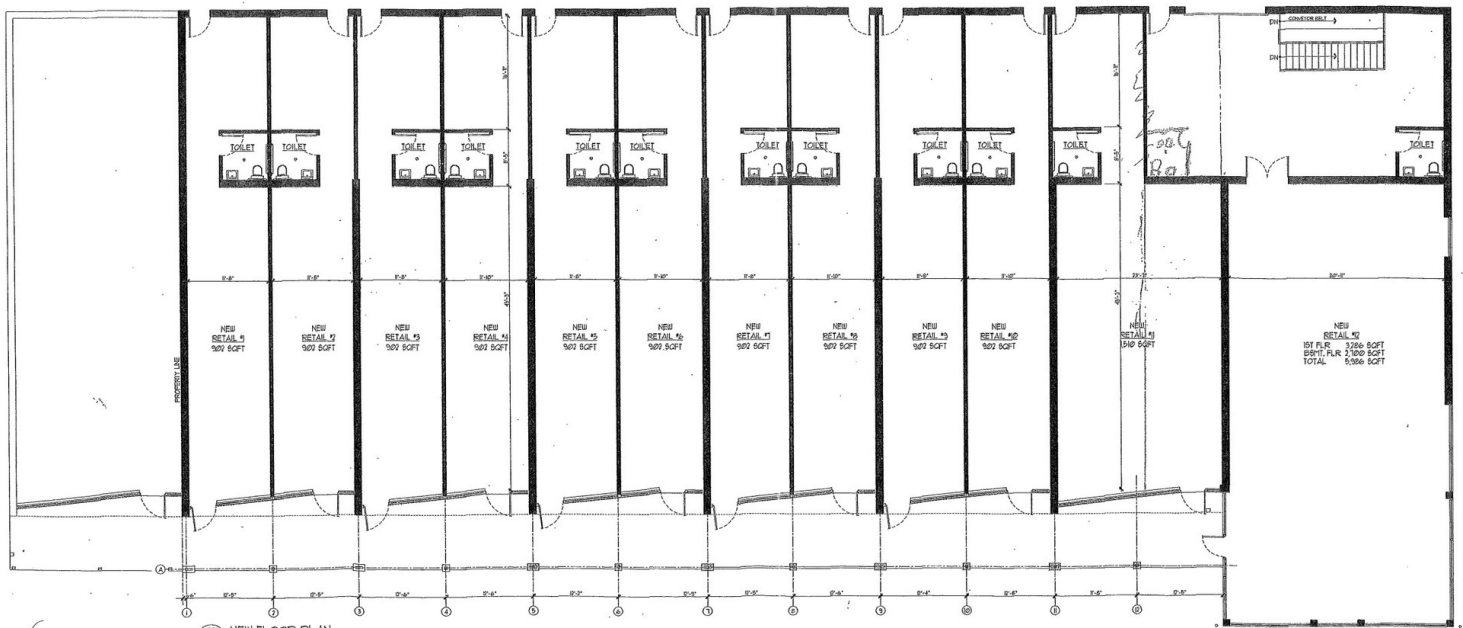




RETAIL SPACE FOR LEASE

1703-1715 N. RAND ROAD PALATINE, IL

SITE PLAN



NEW FLOOR PLAN
1705 Rand Road
Palatine, IL
847-719-1319
sgkafn@vsnl.com



RETAIL SPACE FOR LEASE

1703-1715 N. RAND ROAD PALATINE , IL

MAP OF NATIONAL TENANTS

