



Transduelles Center

Sublease Available

WAREHOUSE + OFFICE SPACE

24,050 SF Available

TERM THROUGH

January 31, 2027

22633 DAVIS DR, STERLING, VA

CBRE

Sublease Available

22633 Davis Dr, Sterling, VA

WAREHOUSE + OFFICE SPACE
24,050 SF

TERM THROUGH
1/31/2027

Building Features

- Multiple loading docks
- 38'x33' column spacing
- 22' clear height
- 1.5/1,000 parking ratio
- Ten minute drive to Dulles Airport
- PD-ID zoning



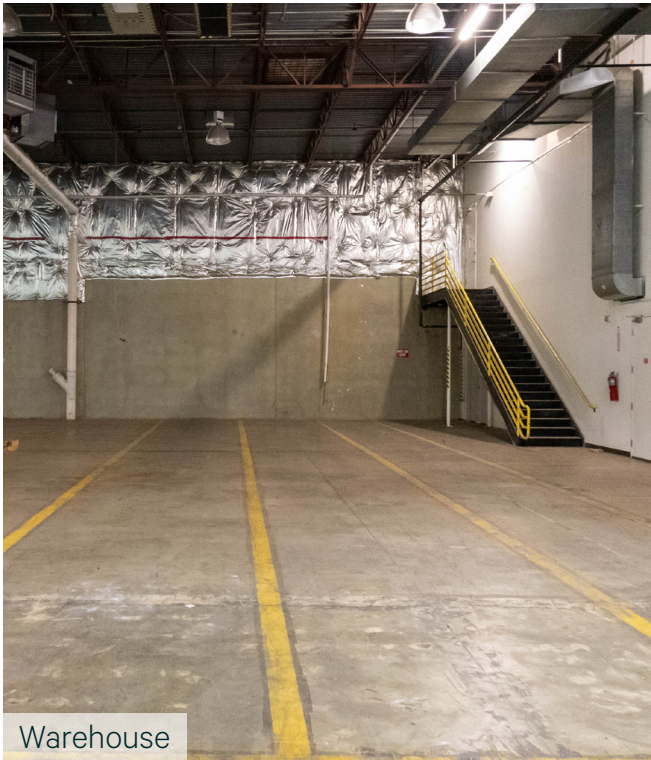
Private Offices



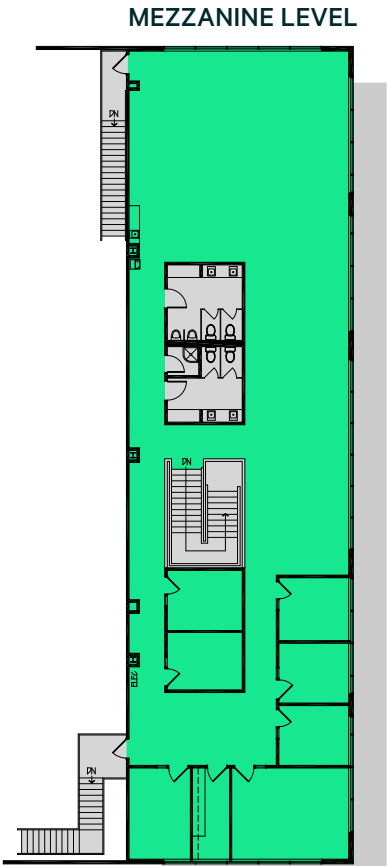
Kitchen



Warehouse



Warehouse



Mezzanine Open Area



Mezzanine Open Area



Transduelles Center

Contact Information:

Brett Schweitzer

+1 703 905 0253

brett.schweitzer@cbre.com