

PACIFIC MEDICAL PLAZA

FOR LEASE
NEW AVAILABLE SPACE
OPPORTUNITY

1640 Newport Blvd, Costa Mesa CA 92627



CBRE

STEVEN LEWALLEN, Vice President
RYAN G. DOPP, Senior Associate

+1 949 725 8414
+1 949 725 8409

Steven.Lewallen@cbre.com
Ryan.Dopp@cbre.com

Lic. 01068304
Lic. 01902830

PROPERTY OVERVIEW



High identity Newport Boulevard location



Convenient location near Hoag, retail and restaurants



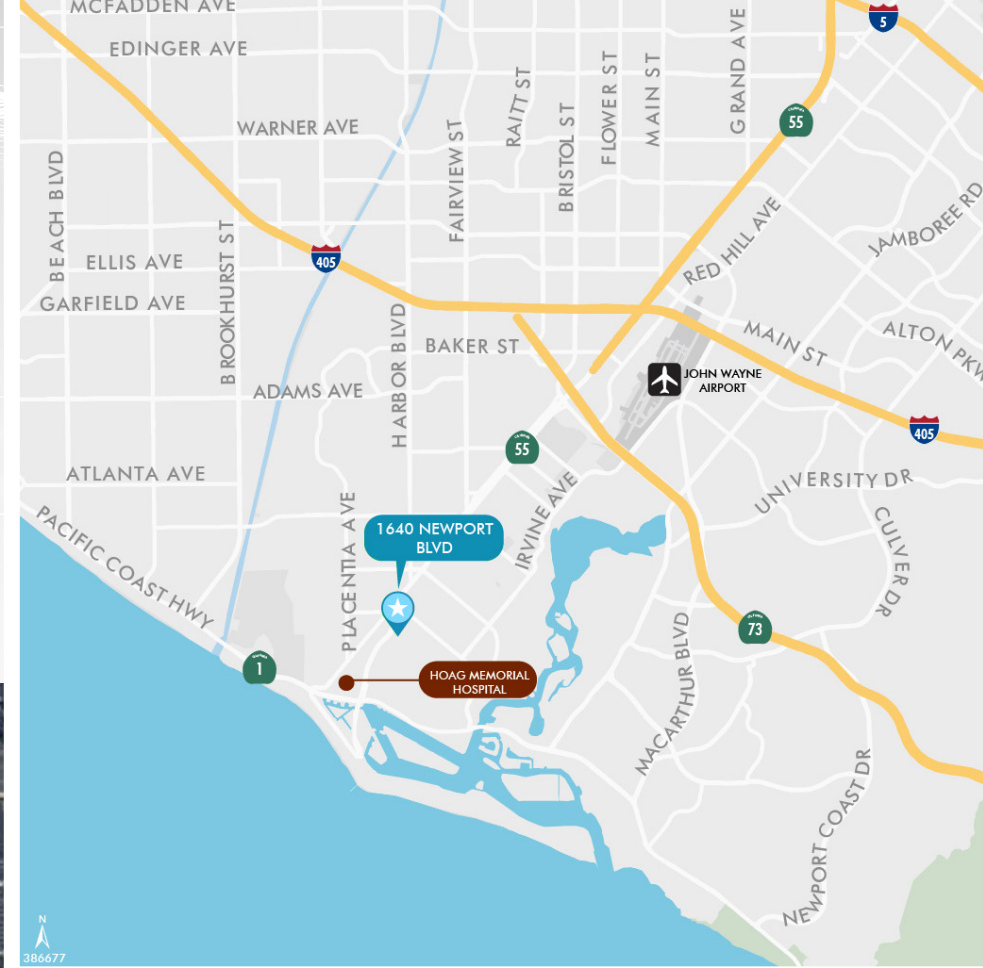
Labs on-site



Abundant free structure and surface parking



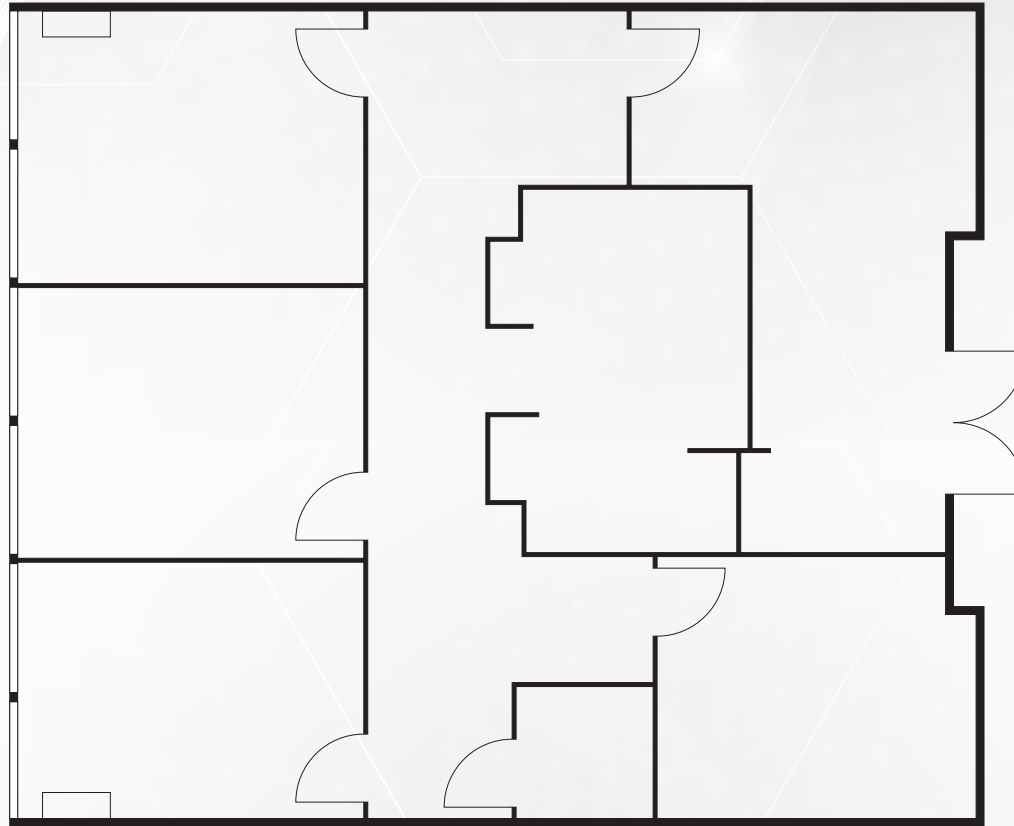
New space availability *Owned and managed by*



CBRE

FLOOR PLAN

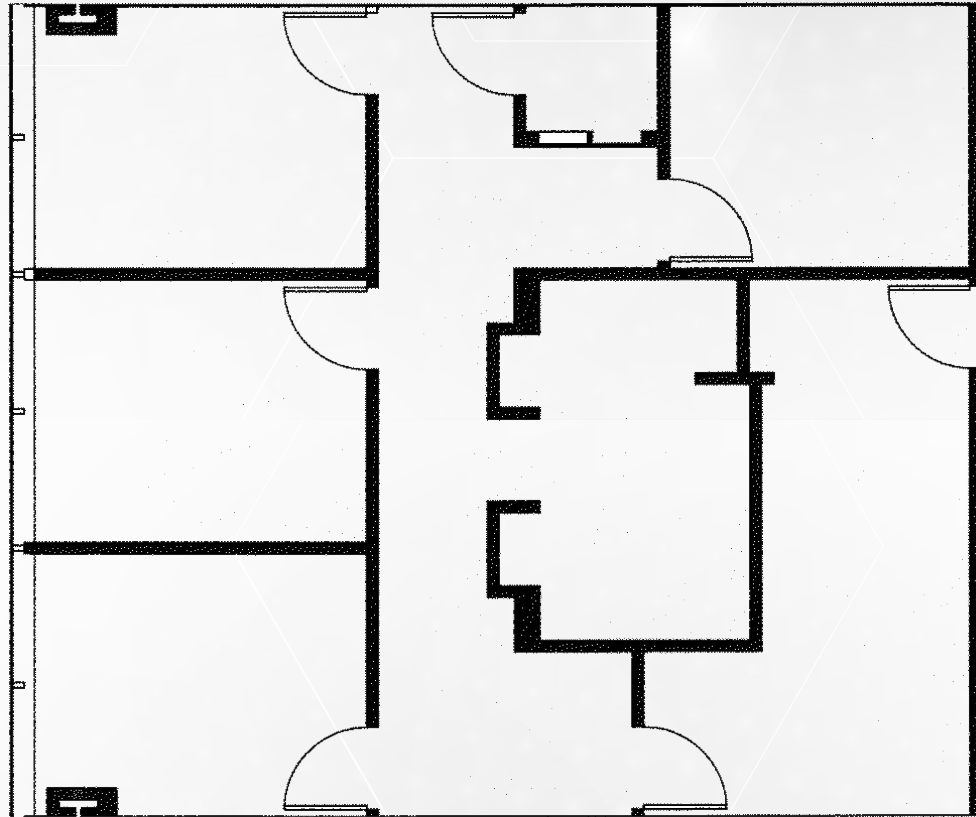
SUITE 450 | 1,345 RSF



CBRE

FLOOR PLAN

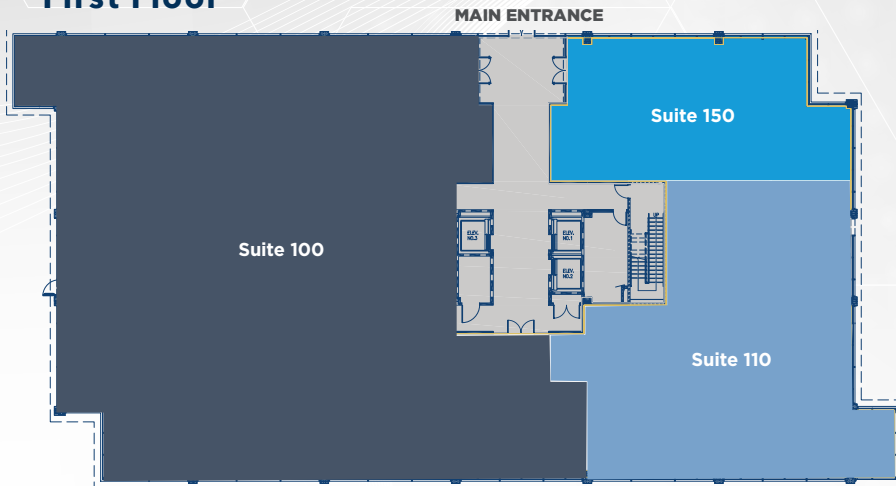
SUITE 455 | 1,390 RSF



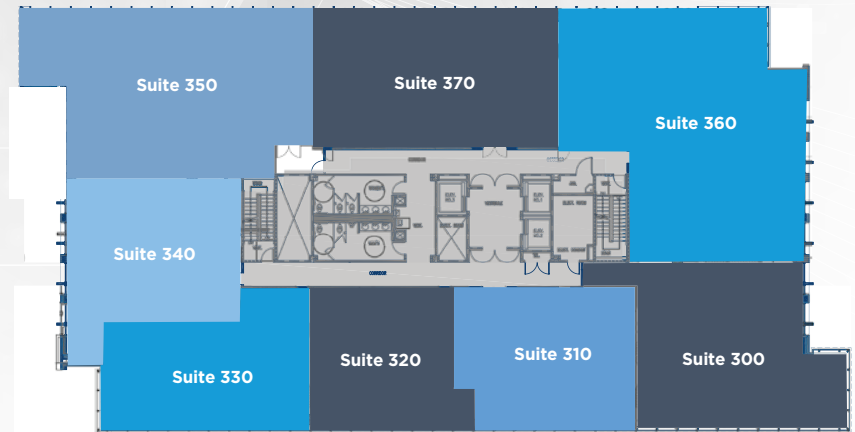
CBRE

FLOOR PLANS

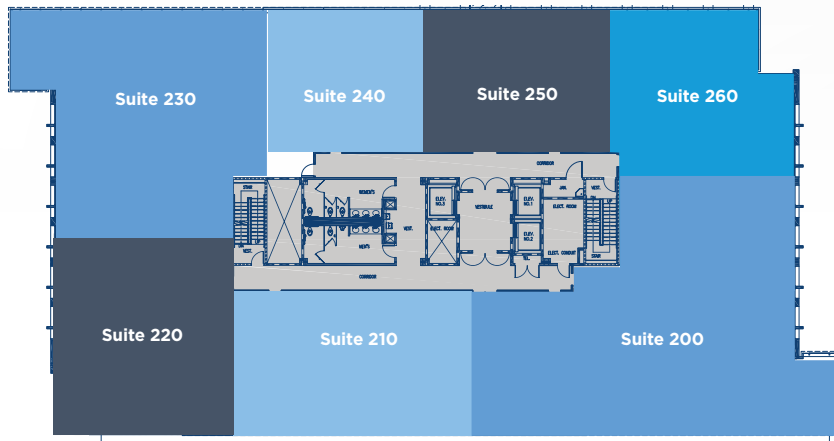
First Floor



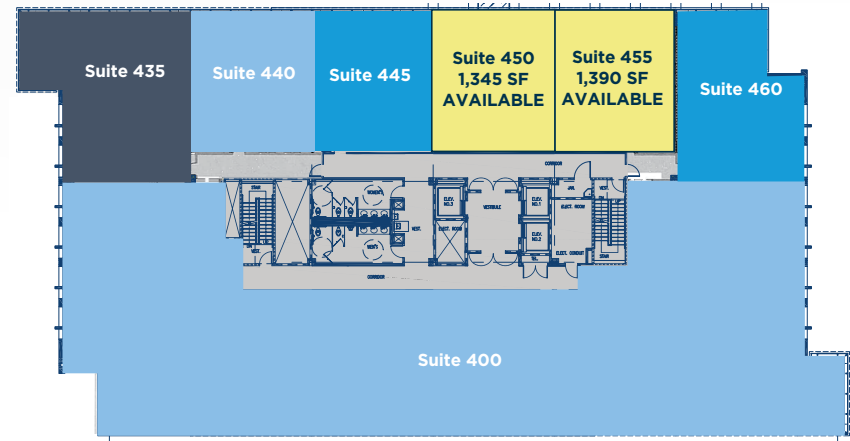
Third Floor



Second Floor



Fourth Floor



PACIFIC MEDICAL PLAZA

FOR LEASE NEW AVAILABLE SPACE OPPORTUNITIES

1640 Newport Blvd, Costa Mesa CA 92627

SITE PLAN

STEVEN LEWALLEN

Vice President

+1 949 725 8414

steven.lewallen@cbre.com

Lic. 01068304

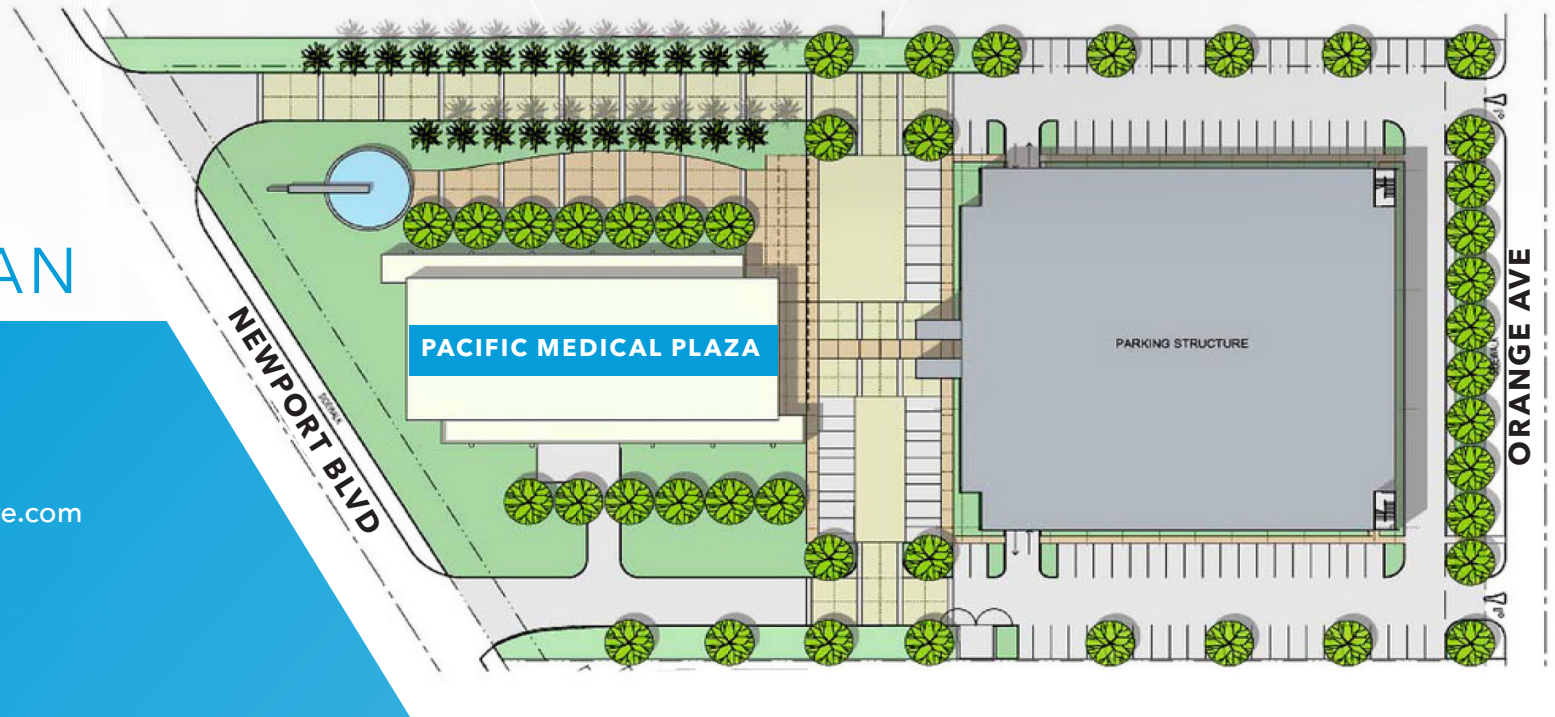
RYAN G. DOPP

Senior Associate

+1 949 725 8409

ryan.dopp@cbre.com

Lic. 01902830



© 2026 CBRE, Inc. All rights reserved. This information has been obtained from sources believed reliable, but has not been verified for accuracy or completeness. You should conduct a careful, independent investigation of the property and verify all information. Any reliance on this information is solely at your own risk. CBRE and the CBRE logo are service marks of CBRE, Inc. All other marks displayed on this document are the property of their respective owners, and the use of such logos does not imply any affiliation with or endorsement of CBRE. Photos herein are the property of their respective owners. Use of these images without the express written consent of the owner is prohibited.

CBRE