

HISTORIC MIXED-USE IN THE  
HEART OF RIDGEWOOD.

# LINCOLN BUILDING

45 NORTH BROAD STREET | RIDGEWOOD, NJ





**1,673 SF AVAILABLE**  
**FLOOR 1**



**HISTORIC MIXED-USE 5 STORY BUILDING**



**IN THE HEART OF RIDGEWOOD**



**SUPERIOR VISIBILITY**



**STRONG DEMAND FOR SERVICE RETAIL**



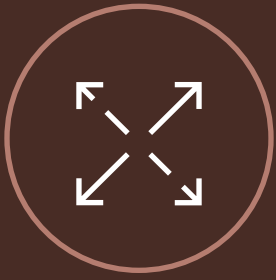
**ACROSS FROM RIDGEWOOD STATION**



**Strong income, population density  
and educational demographics.**

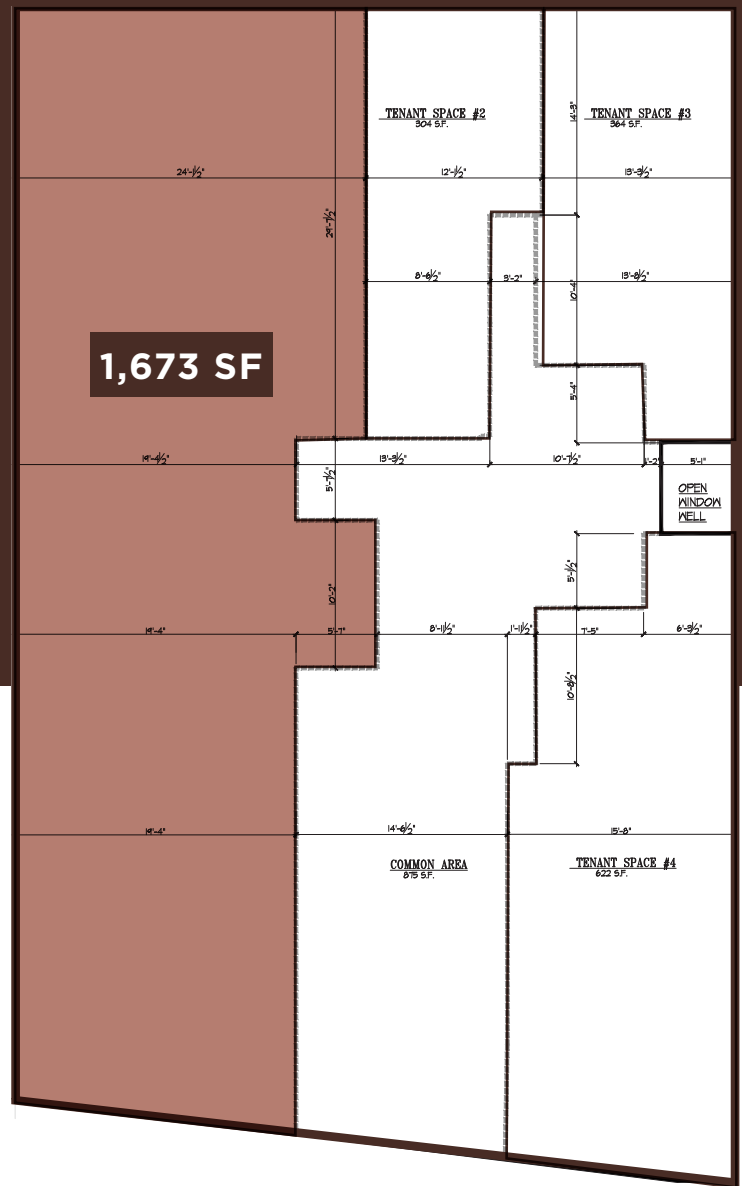
	1 Mile	3 Mile	5 Mile
2024 Population	15,986	110,717	323,881
2024 Households	5,562	38,504	109,522
2024 Avg Household Income	\$187,069	\$172,563	\$142,608
2024 Med Household Income	\$170,786	\$146,989	\$110,547





1,673 SF  
of space

on the  
ground  
floor.



# LINCOLN BUILDING

45 NORTH BROAD STREET | RIDGEWOOD, NJ

## WAYNE KASBAR

VICE PRESIDENT

732 807 0330

WAYNE.KASBAR@COLLIERS.COM

LICENSED SALESPERSON

## SUKETU SHAH

ASSOCIATE VICE PRESIDENT

732 807 0401

SUKETU.SHAH@COLLIERS.COM

LICENSED SALESPERSON



COLLIERS INTERNATIONAL NJ LLC

10 WOODBRIDGE CENTER DRIVE, SUITE 1010

WOODBIDGE, NJ 07095

732 807 0400

NO REPRESENTATION IS MADE AS TO THE ACCURACY OF THE INFORMATION FURNISHED HEREIN AND SAME IS SUBMITTED SUBJECT TO ERRORS, OMISSIONS, CHANGE OF PRICES, RENTAL, OR OTHER CONDITIONS, PRIOR SALE, LEASE, SUBLEASE, AND/OR WITHDRAWAL WITHOUT NOTICE. WHILE EVERY ATTEMPT IS MADE TO ENSURE ACCURACY, THE FLOOR PLAN(S) IS FOR GUIDANCE ONLY. THE MEASUREMENTS, DIMENSIONS, SPECIFICATIONS, AND OTHER DATA SHOWN ARE APPROXIMATE AND MAY NOT BE TO SCALE. WE ASSUME NO RESPONSIBILITY FOR THE ACCURACY OF THE FLOOR PLAN(S) OR FOR ANY ACTION TAKEN IN RELIANCE THEREON. THE FLOOR PLAN(S) DO NOT CREATE ANY REPRESENTATION, WARRANTY OR CONTRACT. ALL PARTIES SHOULD CONSULT A PROFESSIONAL, SUCH AS AN ARCHITECT, TO VERIFY THE INFORMATION CONTAINED HEREIN. THE FURNISHING OF THIS INFORMATION SHALL NOT BE DEEMED A HIRING. A COMMISSION IN ACCORDANCE WITH OUR PRINCIPAL'S SCHEDULE OF RATES AND CONDITIONS WILL BE PAID TO THE PROCURING BROKER WHO EXECUTES OUR OR OUR PRINCIPAL'S BROKERAGE AGREEMENT, SUBJECT TO A FULLY CONSUMMATED TRANSACTION UPON TERMS AND CONDITIONS ACCEPTABLE TO OUR PRINCIPAL. COLLIERS INTERNATIONAL NJ LLC