

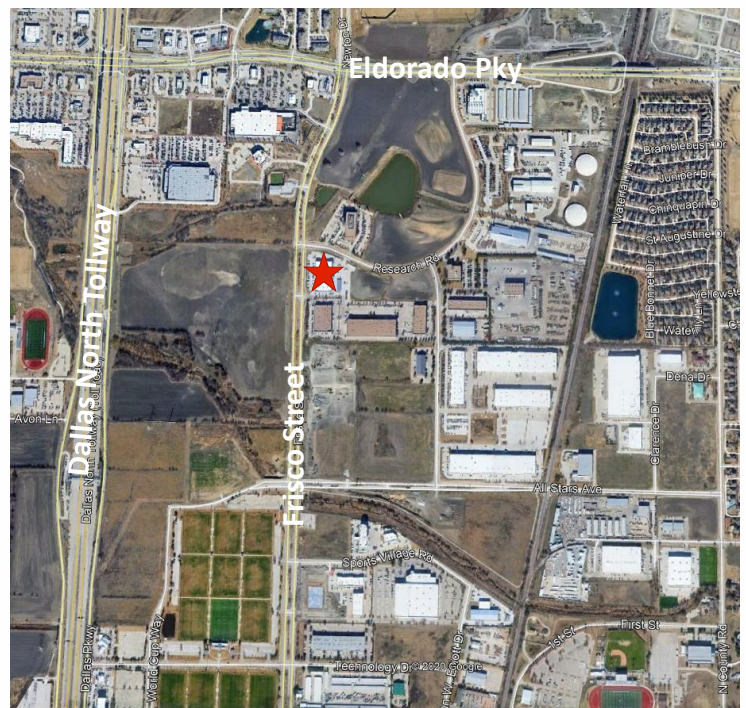


# Sublease

**21,456 SF Plug & Play Space Available**

**Frisco Center II**  
**11000 Frisco Street**  
**Frisco, TX 75033**

- Open floorplan
- Campus design
- 5/1,000 sf surface parking
- 100% office finish
- Excellent corporate identity with park-like environment
- No common area factor
- Frisco Square Mixed-Use Development with numerous restaurant and retail options
- Quoting \$15.50 NNN
- **Sublease through May 2024**



**Chris Stout**  
+1 214 438 6369  
[chris.stout@am.jll.com](mailto:chris.stout@am.jll.com)

**Conor McCarthy**  
+1 214 438 6392  
[conor.mccarthy@am.jll.com](mailto:conor.mccarthy@am.jll.com)



**Frisco Center II**  
**11000 Frisco Street**  
**Frisco, TX 75033**

