

OFFICE FOR LEASE: SAN JOSE

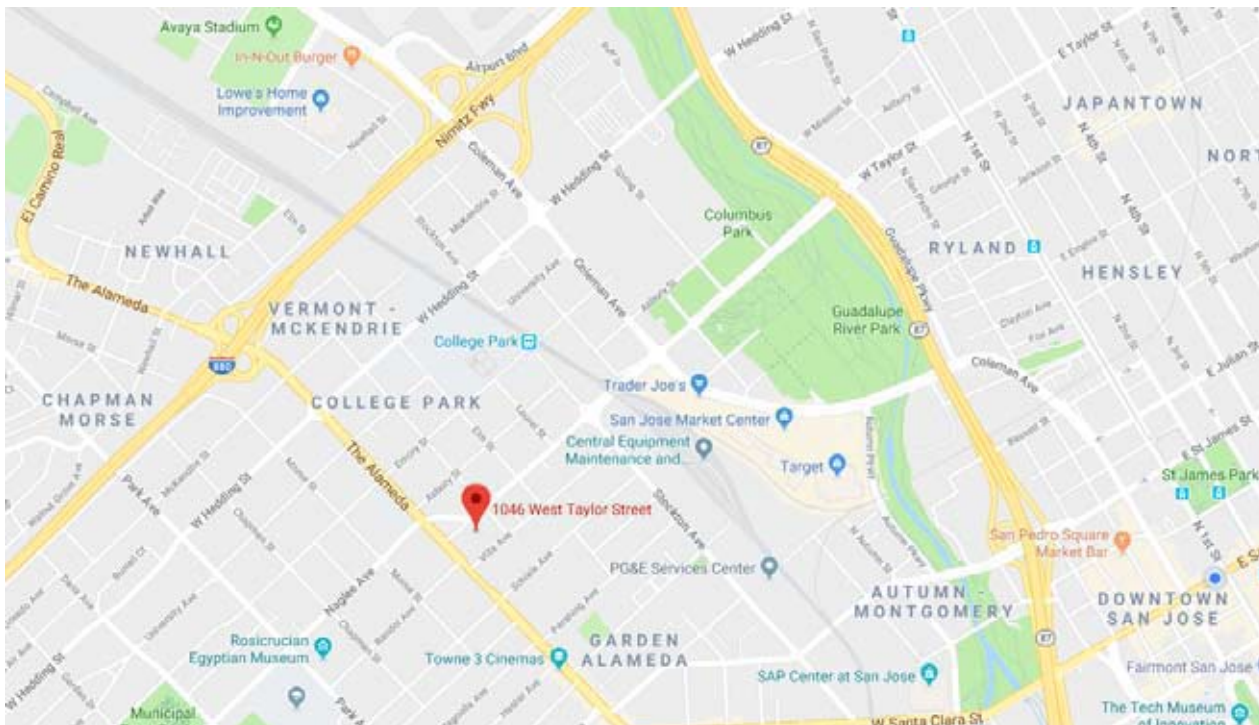
860 SF



1046 W. TAYLOR STREET, SUITE 102, SAN JOSE, CA.

project highlights:

- At The Alameda
- First Floor Space
- Common Conference Room
- Two (2) Private Offices, Open Area
- On-Site Parking
- Call To Tour !



Please Contact Exclusive Agent:

JANA GLUCKMAN
BRE # 00693034

jgluckman@ritchiecommercial.com
direct 1 408.529.7988

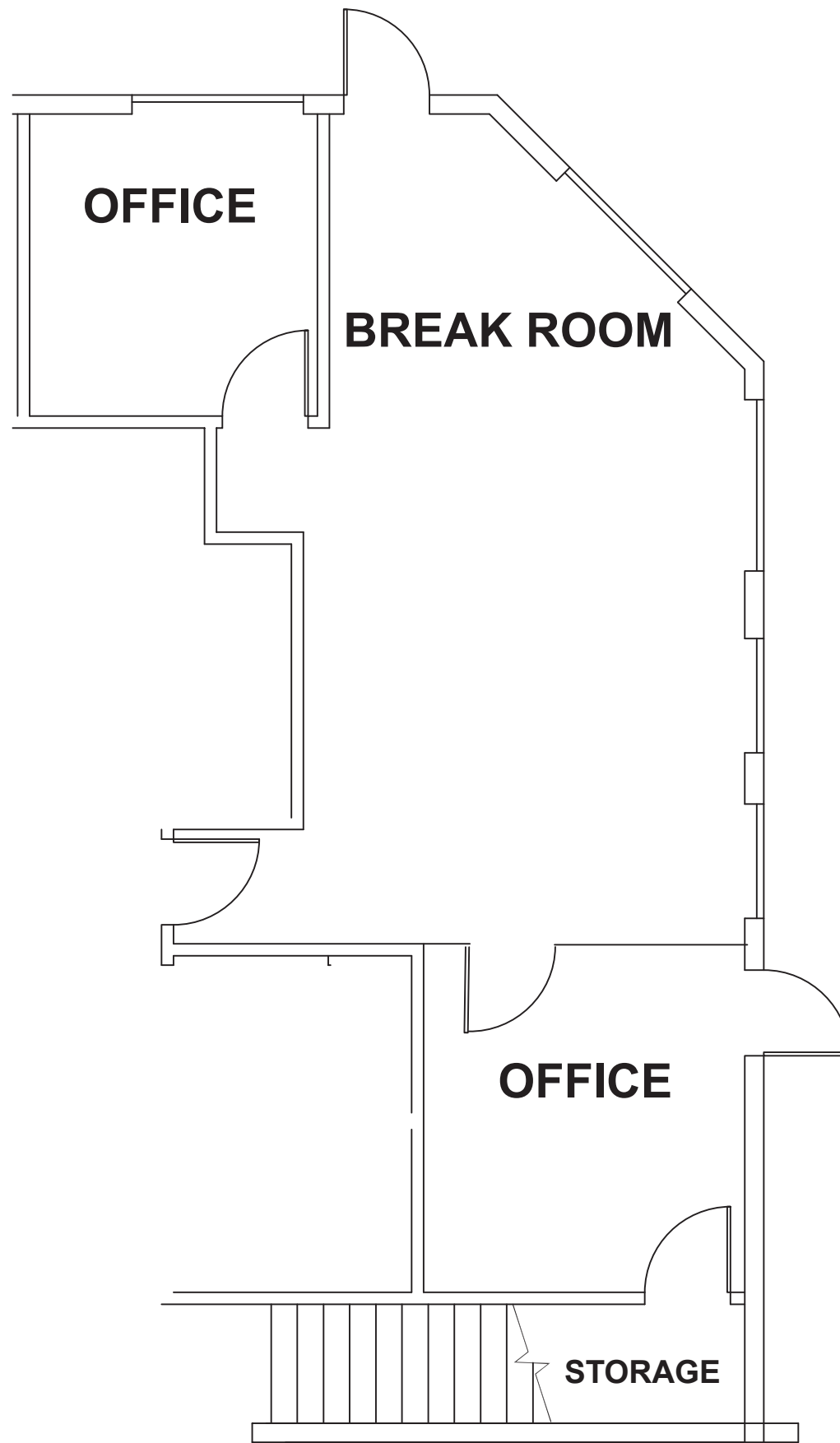
RITCHIE Commercial
RESPONSIBLE REAL ESTATE

34 W. SANTA CLARA STREET, SAN JOSE, CA 95113
BRE # 01209214 | www.ritchiecommercial.com
1 408.971.2700 f 1 408.971.1600

San Francisco | San Jose | Walnut Creek

OFFICE FOR LEASE: SAN JOSE

860 SF



1046 W. TAYLOR STREET, SUITE 102, SAN JOSE, CA.



Please Contact Exclusive Agent:

JANA GLUCKMAN
BRE # 00693034

jgluckman@ritchiecommercial.com
direct 1 408.529.7988

RITCHIE *Commercial*
RESPONSIBLE REAL ESTATE

34 W. SANTA CLARA STREET, SAN JOSE, CA 95113
BRE # 01209214 | www.ritchiecommercial.com
1 408.971.2700 f 1 408.971.1600

San Francisco | San Jose | Walnut Creek