

# SUBLEASE 4,402 SQ.FT.

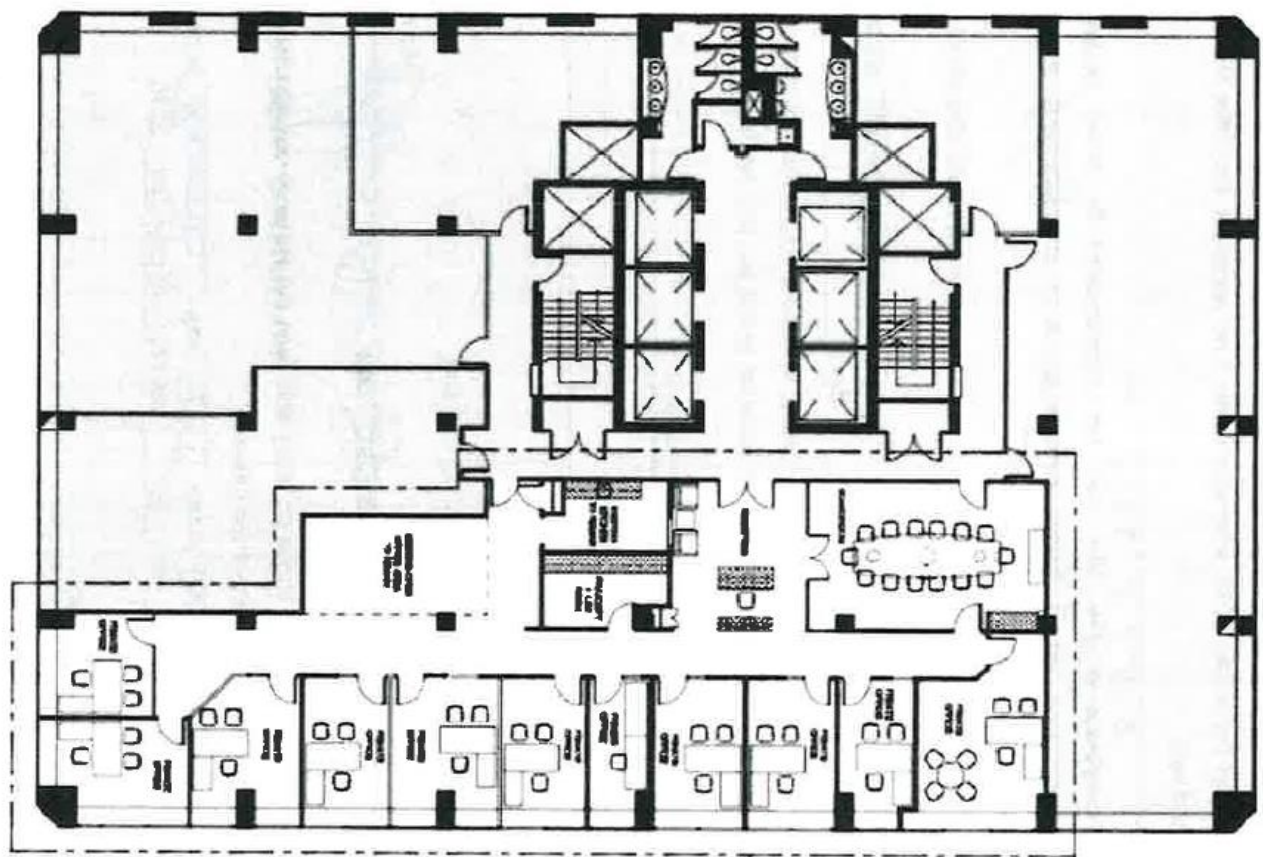
**141  
ADELAIDE  
STREET W**  
Suite 1608



**Area:** 4,402 sq.ft.  
**Net Rent:** Contact Listing Agent  
**Additional:** \$30.29 per sq.ft.  
**Available:** Immediately  
**Expiry:** November 29, 2027

**ANTHONY CLIFFORD**  
Vice President, Sales Representative  
416.485.0488 x231  
[aclifford@titanyork.com](mailto:aclifford@titanyork.com)

**Titan·York**  
Realty Corporation, Brokerage  
2300 Yonge Street, Suite 1903  
Toronto, ON M4P 1E4



Located on the Southwest corner of Adelaide Street West and York Street



Quick access from St. Andrew subway and the PATH



Built out with Private Offices, Boardroom, Reception, Kitchen and storage



Direct elevator exposure



High end leaseholds in place



