

**AVISON
YOUNG**

Sublease

Hugh R. Black Pavilion
1650 Skylyn Dr, Suite 380
Spartanburg, SC 29301

Suite 380 (2,132 sf)



Medical office building sublease opportunity

Hugh R. Black Pavilion boasts 109,500 sf of Class A medical space unique to the Spartanburg market. This building is located at the heart of Spartanburg Regional's Hospital System's Mary Black campus. The campus features immaculate landscaping and an abundance of parking. The lobby has marble floors and two large elevators that can accommodate hospital beds. The 1st floor features a fitness gym and smoothie bar for the building's employees.

Get more information

Ned Reynolds, Vice President
+1 336.260.3148
ned.reynolds@avisonyoung.com

Will Hannah, Associate
+1 864.508.4525
will.hannah@avisonyoung.com

avisonyoung.com

Property overview

Hugh R. Black Pavilion - Sublease

- Suite 380 (2,132 sf)
- NNN lease
- Class A medical office
- Ample parking
- On-site gym with pool and snack bar
- Close to new Drayton Mills mixed-use development
- Across the street from Spartanburg Day School
- Adjacent to Houston Elementary School



Cancer Center
of the Carolinas

Carolina Neurology

Spartanburg Regional
Health System

Spartanburg Day School

Drayton Mills Trail

Drayton Mills Loft
Apartments & Marketplace

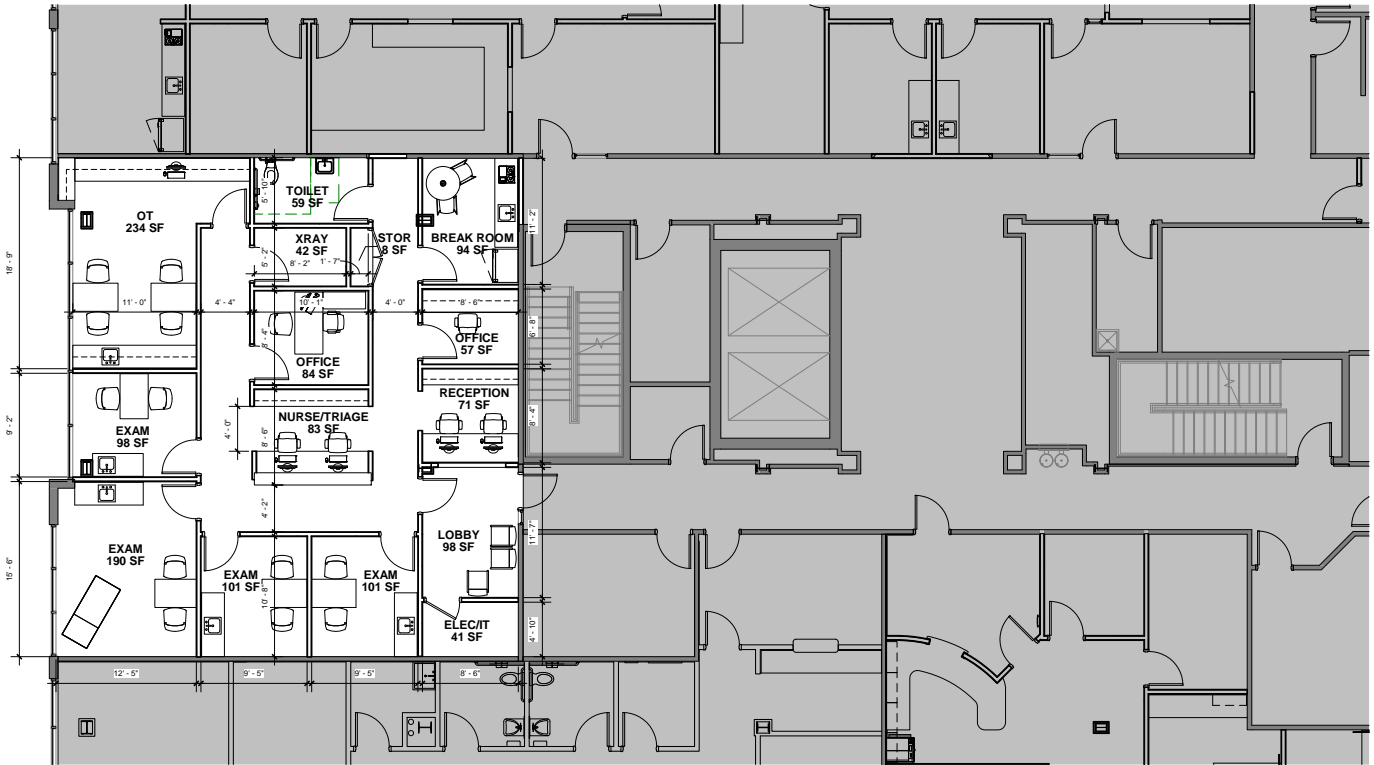
Drayton Mills
Elementary School

Spartanburg Pediatric
Dentistry

AVISON
YOUNG

Floorplan & interior

Hugh R. Black Pavilion - Sublease



For more information:

Ned Reynolds
Vice President
+1 336.260.3148

Will Hannah
Associate
+1 864.508.4525

**AVISON
YOUNG**