

FOR LEASE

PREMIUM OFFICE SUITE

*±7,690 SF Office Suite Available in
the Heart of Downtown Pleasanton*

450 MAIN ST, PLEASANTON, CA 94566



KIDDER.COM

km Kidder
Mathews

450 MAIN ST

This premium office buildout boasts a welcoming reception area and expansive corner glass windows, allowing for abundant natural light.

±7,690 RSF Divisible to approximately ±2,500 RSF

Sixteen (16) private offices

Two (2) conference rooms

Two (2) phone rooms

Room for twenty (20) workstations

Open break/kitchen area

Storage, and server rooms

Two (2) copy/work areas

EXTRAS

Parapet signage fronting Main Street Pleasanton

Two (2) dedicated parking stalls

Ample parking in nearby Pleasanton public lots



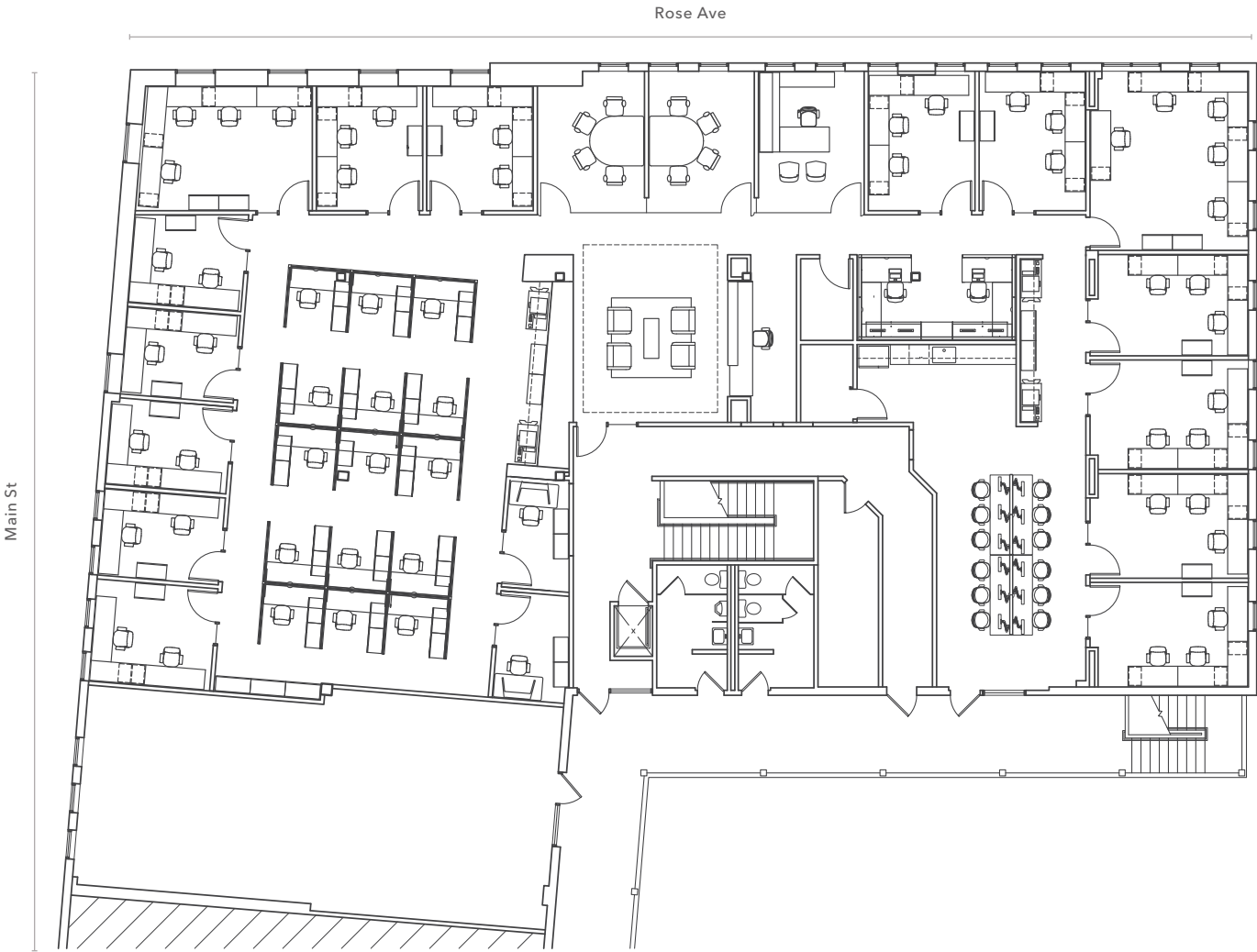
450 MAIN ST

AVAILABLE FOR LEASE

KIDDER MATHEWS



FLOOR PLAN



±7,690 RSF

AVAILABLE

±2,500 RSF

DIVISIBLE OF ±7,690

\$3.35

PSF/MO, FULL SERVICE

FLOOR PLAN NOT TO SCALE





450 MAIN ST

*For more information on
this property, please contact*

IAN THOMAS
925.905.1105
ian.thomas@kidder.com
LIC N° 01279455

JASON CHANDLER
925.905.1103
jason.chandler@kidder.com
LIC N° 01394441

KIDDER.COM

This information supplied herein is from sources we deem reliable. It is provided without any representation, warranty, or guarantee, expressed or implied as to its accuracy. Prospective Buyer or Tenant should conduct an independent investigation and verification of all matters deemed to be material, including, but not limited to, statements of income and expenses. Consult your attorney, accountant, or other professional advisor. All Kidder Mathews designs are the sole property of Kidder Mathews. Branded materials and layouts are not authorized for use by any other firm or person.

