

N  
FIRST FLOOR PLAN

4/26/2013 4:44 PM CAD DWG FILE: A201 FIRST FLOOR PLAN.DWG

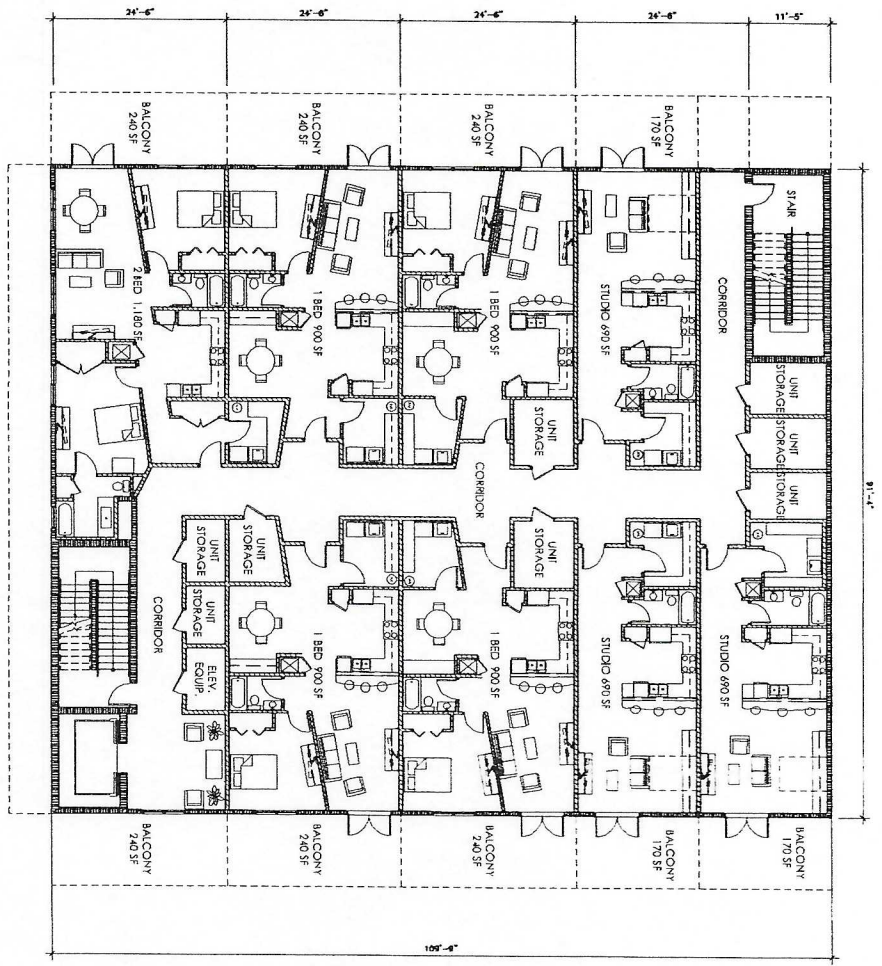
**SHEET**  
**A201**

COPYRIGHT: UGARTE & ASSOCIATES, INC. 2013  
 PROJECT: RIVER'S EDGE  
 DRAWING NO: 2013-04  
 DATE: 04/26/2013  
 DESIGNED BY: [REDACTED]  
 CHECKED BY: [REDACTED]  
 APPROVED BY: [REDACTED]

**RIVER'S EDGE BLDG**  
 PALMETTO, FLORIDA

**FIRST FLOOR PLAN**

**UGARTE**  
 ARCHITECTURE  
 PLANNING  
 428 5th Avenue West  
 Palmetto, Florida 34221  
 P.O. Box 11728  
 Palmetto, Florida 34221  
 Phone: (813) 961-1172  
 Fax: (813) 961-1173  
 www.ugarte.com



N  
 SECOND FLOOR PLAN

4/26/2013 4:45 PM CAD DWG FILE: A202 SECOND FLOOR PLAN.DWG

**A202**

**REVISIONS**

PROJECT: RIVER'S EDGE BLDG  
 DRAWING NO: A202  
 DATE: 4/26/2013

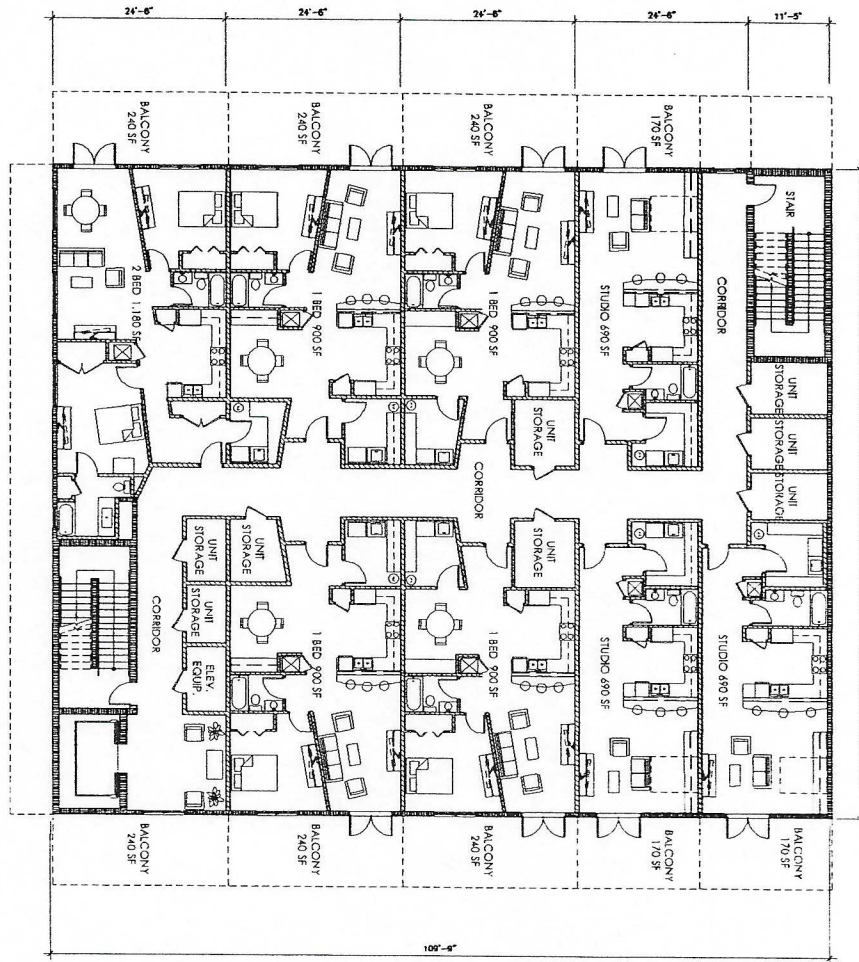
**RIVER'S EDGE BLDG**

PALMETTO, FLORIDA

**SECOND FLOOR PLAN**

**UGARTE**  
 ASSOCIATES, INC.  
 ARCHITECTS

434 N. AVENUE WEST  
 PALMETTO, FLORIDA 34221  
 P: (813) 775-1888  
 F: (813) 775-1888  
 WWW.UGARTE.COM




  
 THIRD FLOOR PLAN

6/20/2013 4:47 PM CAD DWG FILE: A203 THIRD FLOOR PLAN.DWG

**A203**  
 SHEET

COPYRIGHT: USARTE & ASSOCIATES, INC. 2013  
 PROJECT NO: 201304  
 DATE: 06/20/13  
 DRAWN BY: [Name]  
 CHECKED BY: [Name]

**RIVER'S EDGE BLDG**  
 PALMETTO, FLORIDA

**THIRD FLOOR PLAN**

**UGARTE**  
 ARCHITECTURE  
 ARCHITECTS, INC.  
 451 PALMETTO AVENUE, SUITE 100  
 PALMETTO, FLORIDA 34291  
 PHONE: 813-775-4442  
 FAX: 813-775-4443  
 WWW.UGARTEARCHITECTS.COM