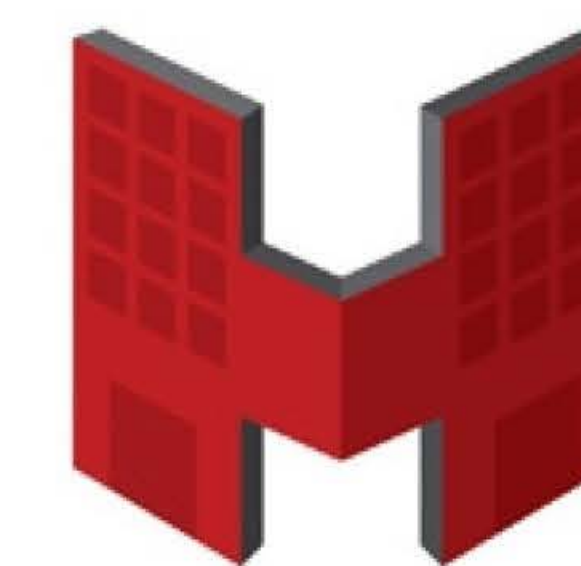


Coon Rapids Marketplace

11650 Round Lake Blvd, Coon Rapids, MN 55433

2,295 sf Available

1,126 sf Available (Could Combine)



HORSTMANN
ENTERPRISES

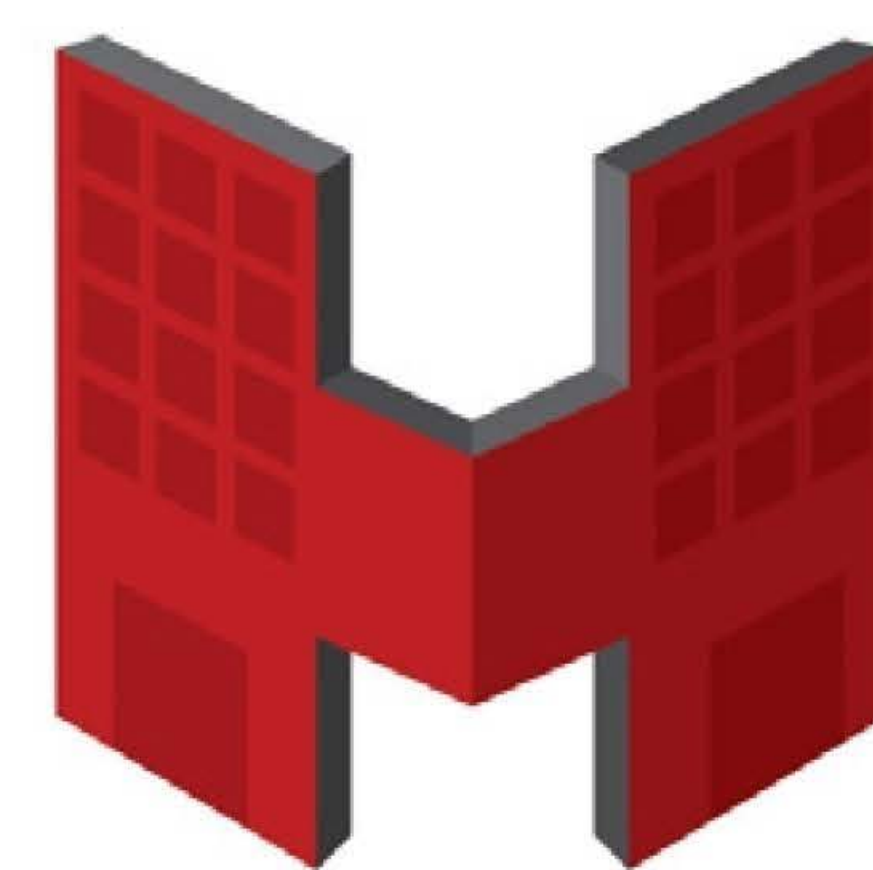
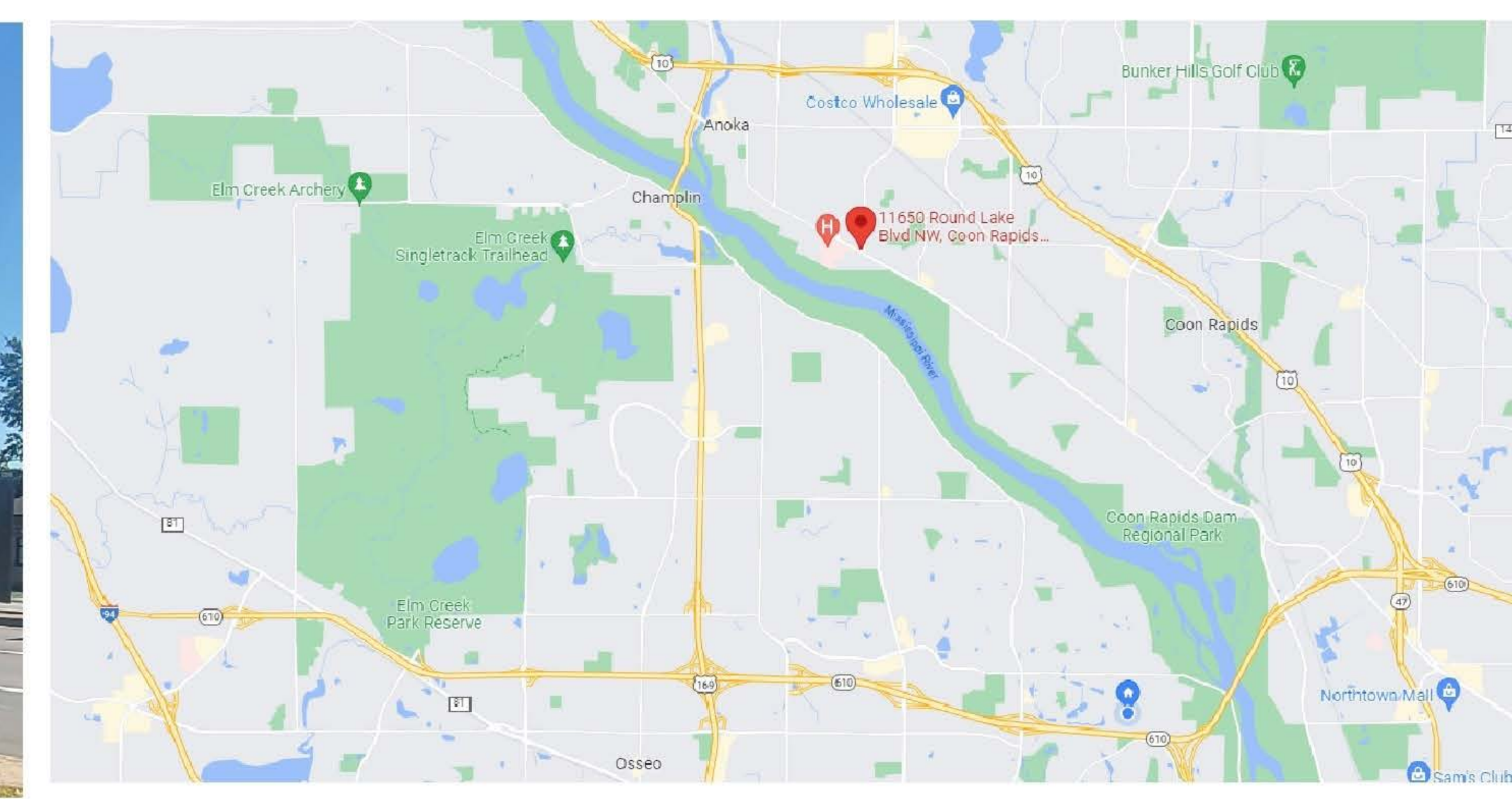


Features:

- Next to Mercy Hospital
- Very Clean & Attractive Center
- Easy Access
- Great Visibility
- Pylon Signage
- Big Fascia
- CR Blvd. & Round Lake Blvd.

Taxes: \$3.04

CAM: \$5.46



HORSTMANN
ENTERPRISES

FOR MORE INFORMATION, PLEASE CALL:

Jeff Horstmann

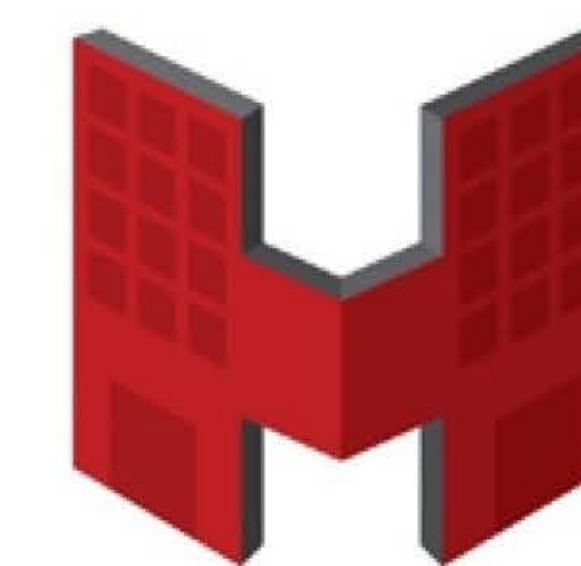
(612) 418-4757

jeff@horstmannenterprises.com

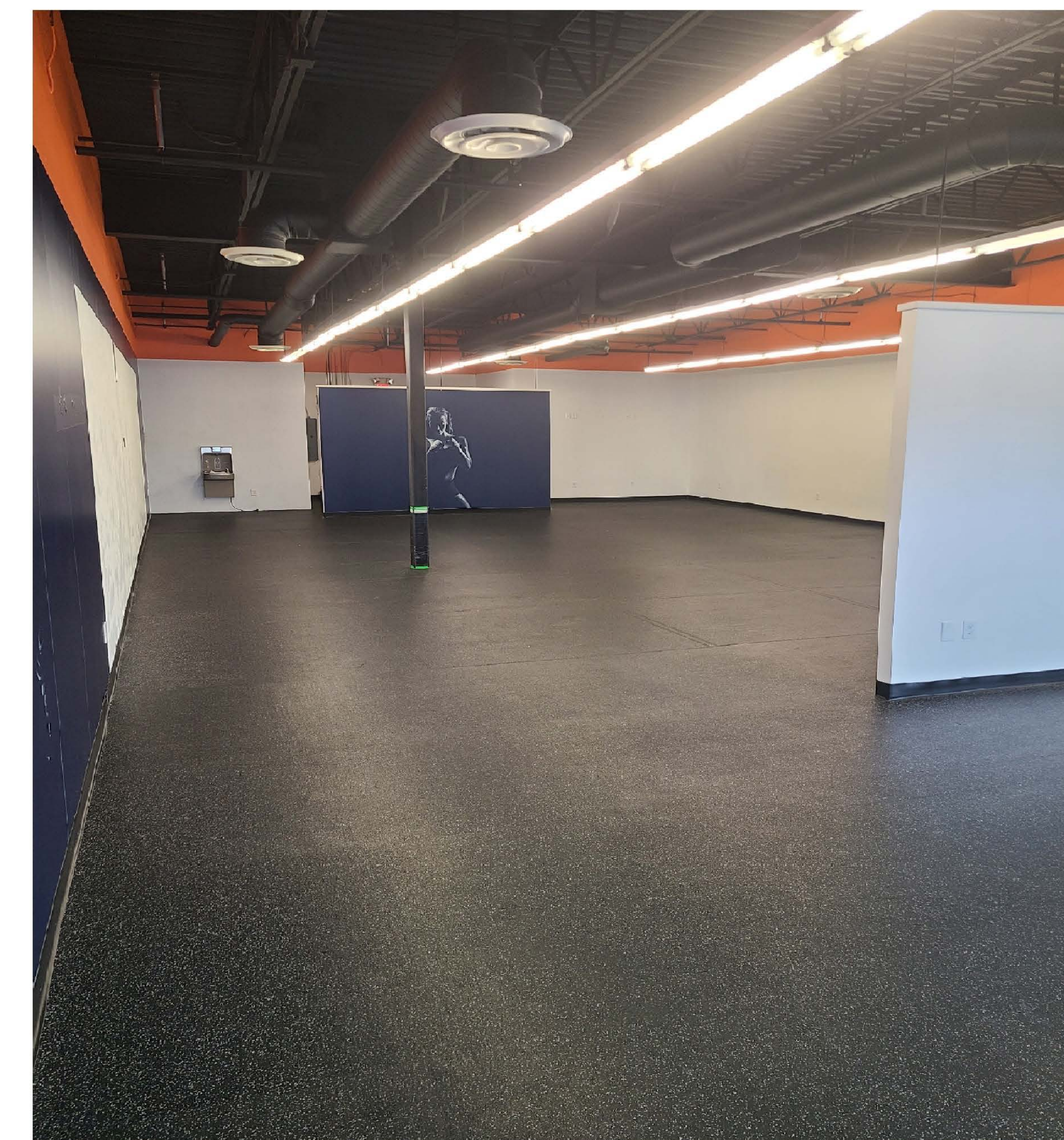
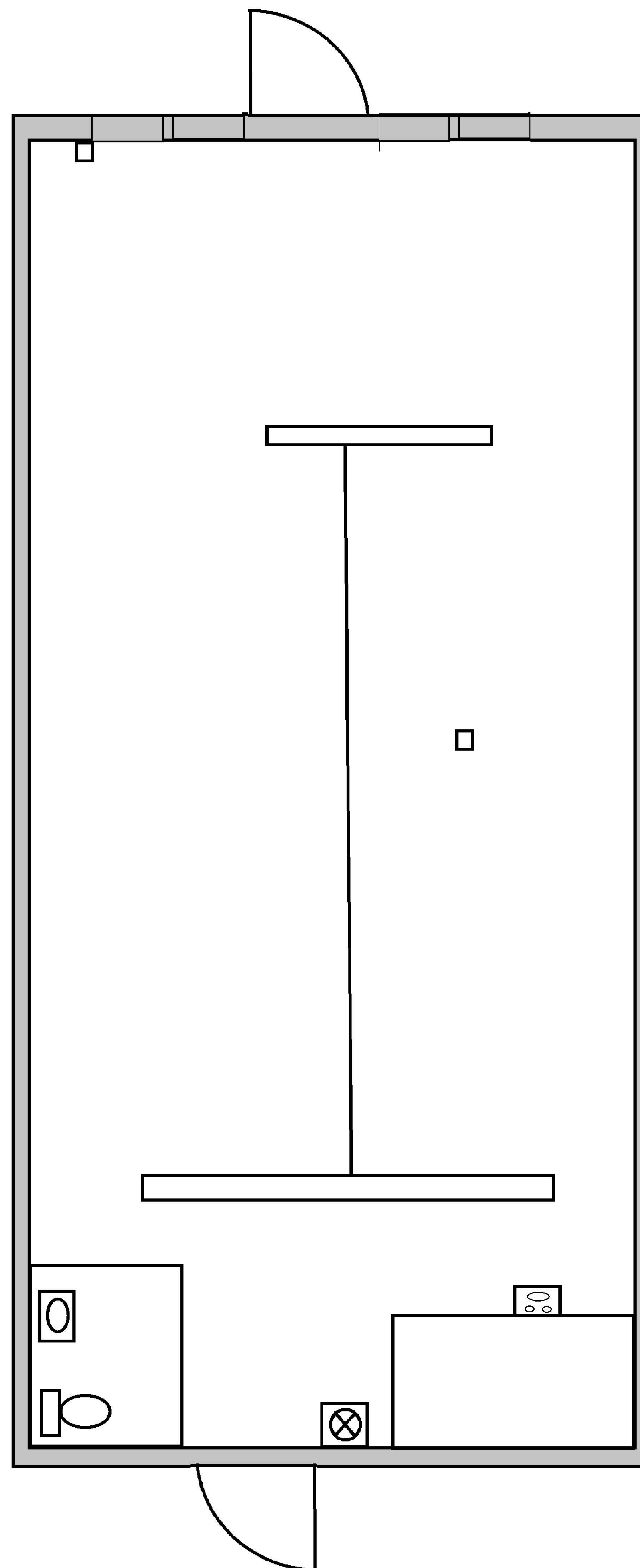
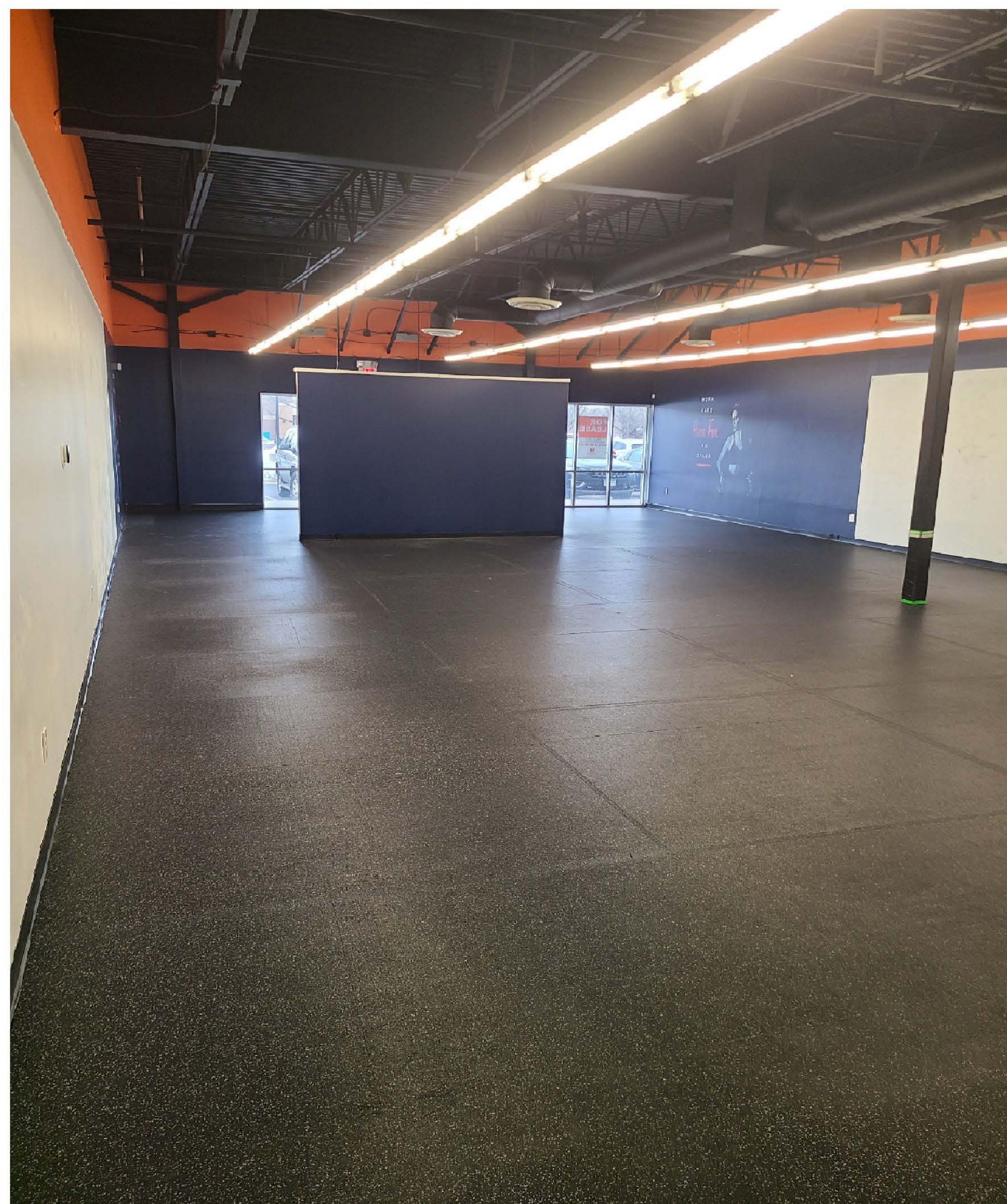
Coon Rapids Marketplace

11650 Round Lake Blvd, Coon Rapids, MN 55433

2,295 sf available (could expand upto 7,132 sf)



HORSTMANN
ENTERPRISES

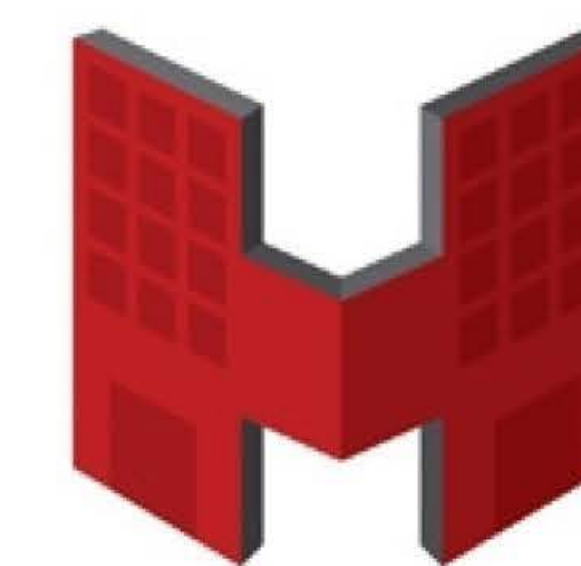


Coon Rapids Marketplace

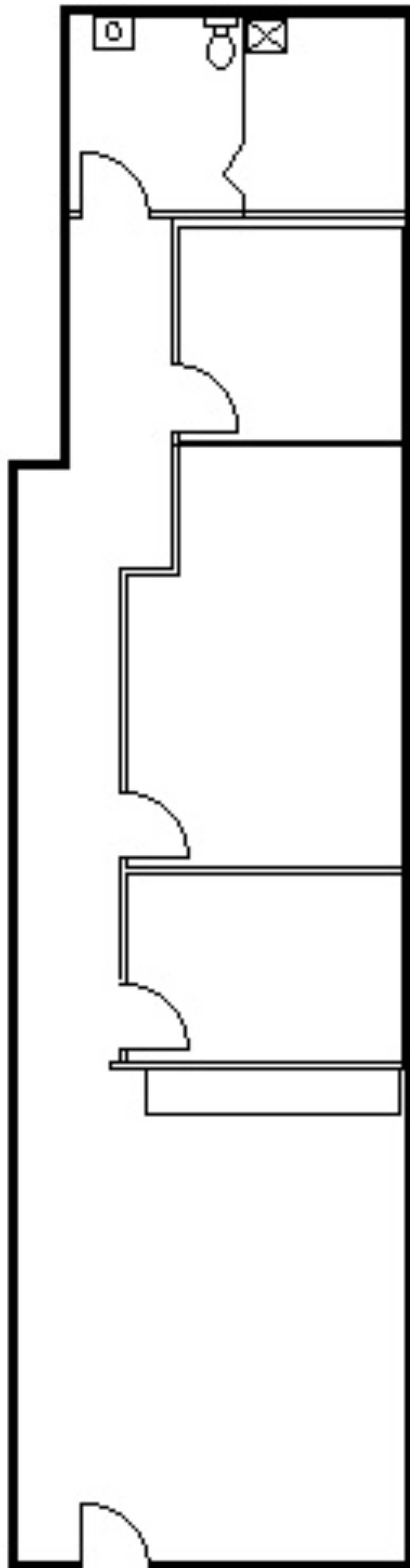
11650 Round Lake Blvd, Coon Rapids, MN 55433

2,295 sf Available

1,126 sf Available (Could Combine)



HORSTMANN
ENTERPRISES



Coon Rapids Marketplace

11650 Round Lake Blvd, Coon Rapids, MN 55433
2,295 sf Available
1,126 sf Available (Could Combine)



Just a 1/4 mile from Mercy Hospital. Great, clean site for MEDICAL USERS!

