

REV: 7-14-22 LLL
3-07-23 CL

441

447

(Formerly Co. Rd. No. 89)

CASTRO
S. 42°17'E (State)

STATE
HIGHWAY (ST.)

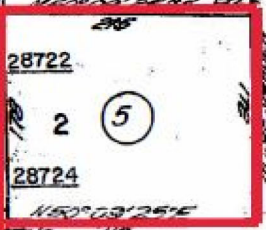
BLVD.

P.M. 500
28700

P.M. 561
P.M. 3283

28900

29150



28722
2
5
28724

40,000 ±

168 Ac ±

808

806

805

807

626

(3-2) CITY

25-030
25-233

25-224

TENNYSON

ROAD

1.29 Ac ±

N21°07'49\"/>

N49°07'02\"/>

N49°07'02\"/>

N49°07'02\"/>

N60°53'25\"/>

N79°20'50\"/>

N79°20'50\"/>

N79°20'50\"/>

N39°50'35\"/>

N40°52'58\"/>

N40°52'58\"/>

N40°52'58\"/>

N40°52'58\"/>

N3°11'39\"/>

N3°11'39\"/>

N3°11'39\"/>

N3°11'39\"/>

N04°27'02\"/>

N04°27'02\"/>

N04°27'02\"/>

N04°27'02\"/>

N04°27'02\"/>

N04°27'02\"/>

N04°27'02\"/>

N04°27'02\"/>

R: 50.0
38.67

R: 50.0
38.67

R: 50.0
38.67

R: 50.0
38.67

R: 50.0
38.67

R: 50.0
38.67

R: 50.0
38.67

R: 50.0
38.67

N77°01'55\"/>

N77°01'55\"/>

N77°01'55\"/>

N77°01'55\"/>

N77°01'55\"/>

N77°01'55\"/>

N77°01'55\"/>

N77°01'55\"/>

N77°01'55\"/>

N77°01'55\"/>

N77°01'55\"/>

N77°01'55\"/>

N77°01'55\"/>

N77°01'55\"/>

N77°01'55\"/>

N77°01'55\"/>

N77°01'55\"/>

N77°01'55\"/>

N77°01'55\"/>

N77°01'55\"/>

N77°01'55\"/>

N77°01'55\"/>

N77°01'55\"/>

N77°01'55\"/>

N77°01'55\"/>

N77°01'55\"/>

N77°01'55\"/>

N77°01'55\"/>

N77°01'55\"/>

N77°01'55\"/>

N77°01'55\"/>

N77°01'55\"/>

N77°01'55\"/>

N77°01'55\"/>

N77°01'55\"/>

N77°01'55\"/>

N77°01'55\"/>

N77°01'55\"/>

N77°01'55\"/>

N77°01'55\"/>

67

C

C