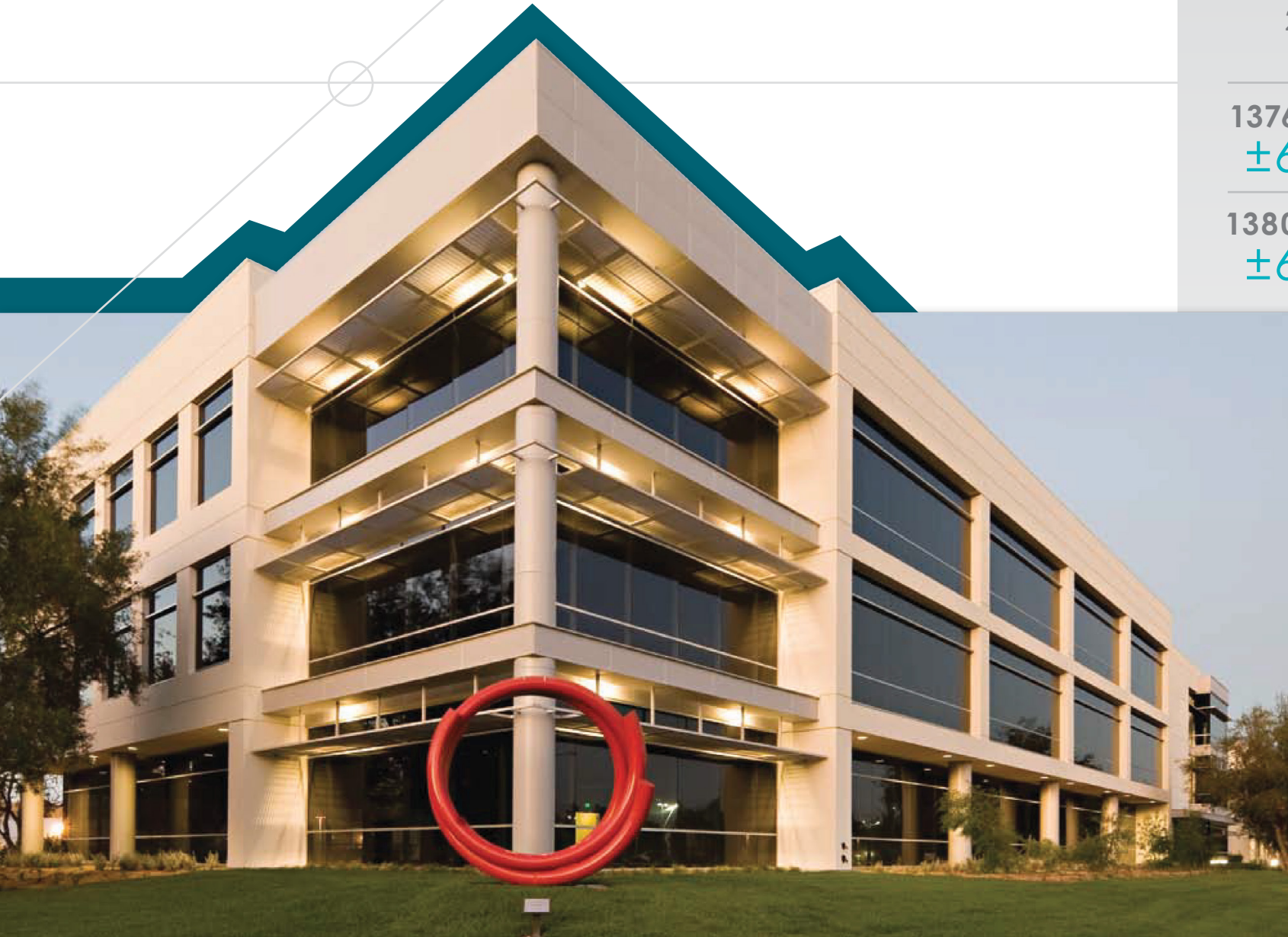


2 BUILDINGS  
FOR LEASE

1376 BORDEAUX  
±61,921 SF

1380 BORDEAUX  
±61,921 SF



# BORDEAUX CENTRE

1376 & 1380 BORDEAUX, SUNNYVALE, CALIFORNIA

# THE PROPERTY

---



2 THREE-STORY  
BUILDING PROJECT



3.6/1,000 PARKING RATIO



SHOWERS ON THE  
1ST FLOOR OF BOTH  
BUILDINGS



CAMPUS SETTING WITH  
EXPANSION UP TO  
120,000 RSF



2,000 AMPS # 480 VOLTS



DOUBLE DOOR  
LOADING



EXCELLENT IDENTITY:  
BUILDING AND  
MONUMENT  
SIGNAGE AVAILABLE



TWO 3500 LB.  
HYDRAULIC ELEVATORS



5.43 ACRE-SITE



# SITE PLAN







# PROPOSED COURTYARD AMENITY ENHANCEMENT

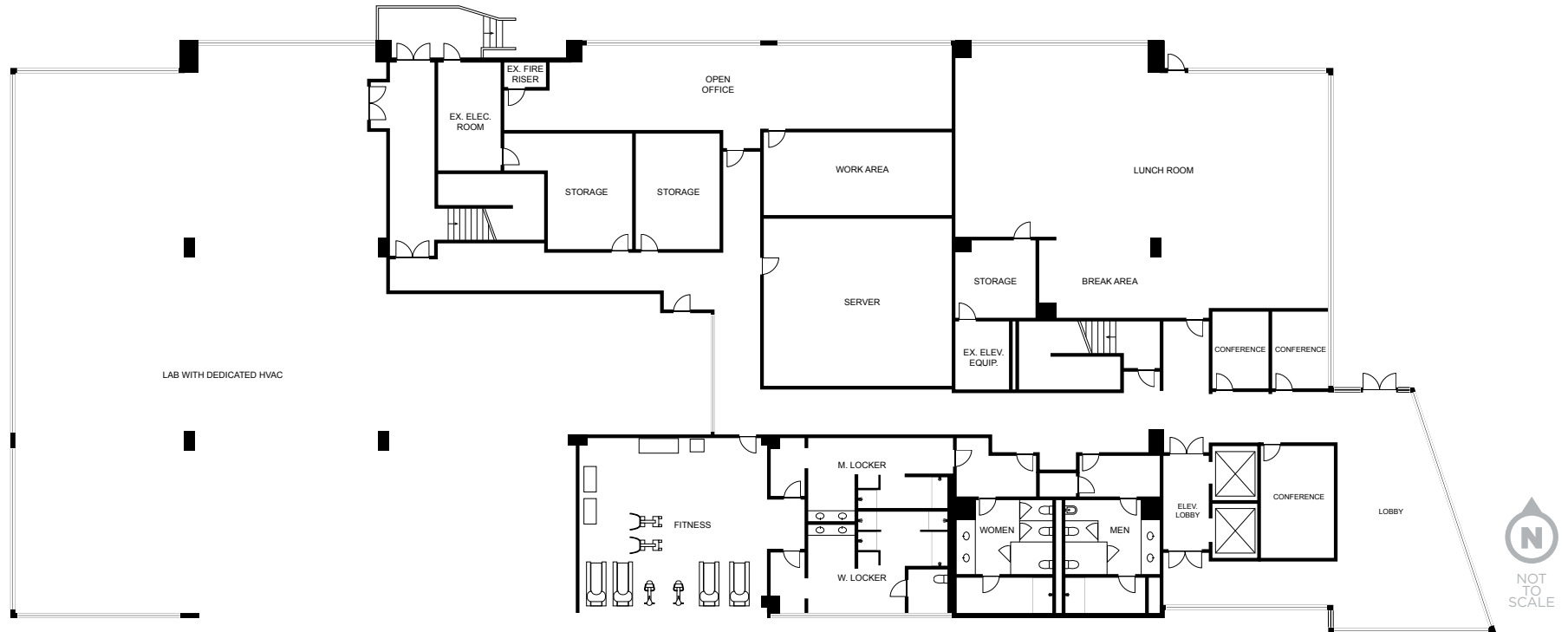




# FLOOR PLANS

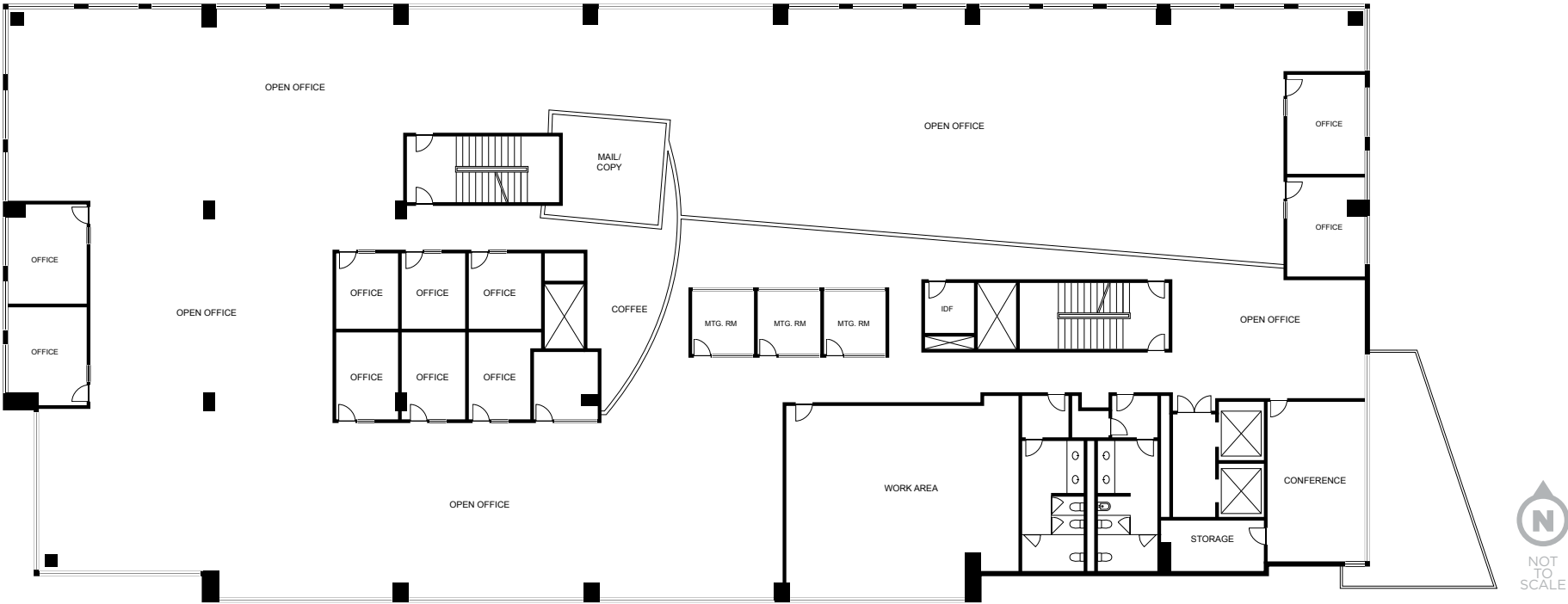
1380 BORDEAUX DRIVE

## FIRST FLOOR



# FLOOR PLANS

1380 BORDEAUX DRIVE  
SECOND FLOOR





# FLOOR PLANS

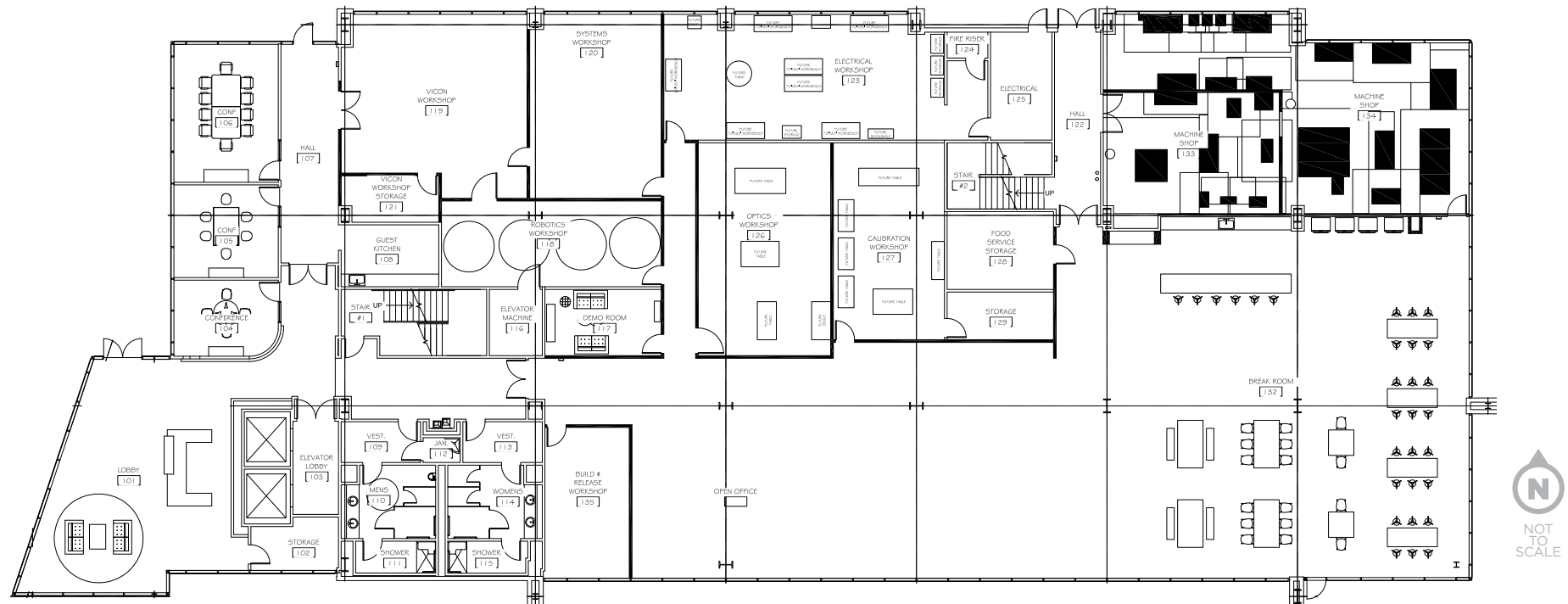
1380 BORDEAUX DRIVE

## THIRD FLOOR



# FLOOR PLANS

1376 BORDEAUX DRIVE  
FIRST FLOOR



## ROOM COUNT:

SHARED OFFICES: X  
PRIVATE OFFICES: X

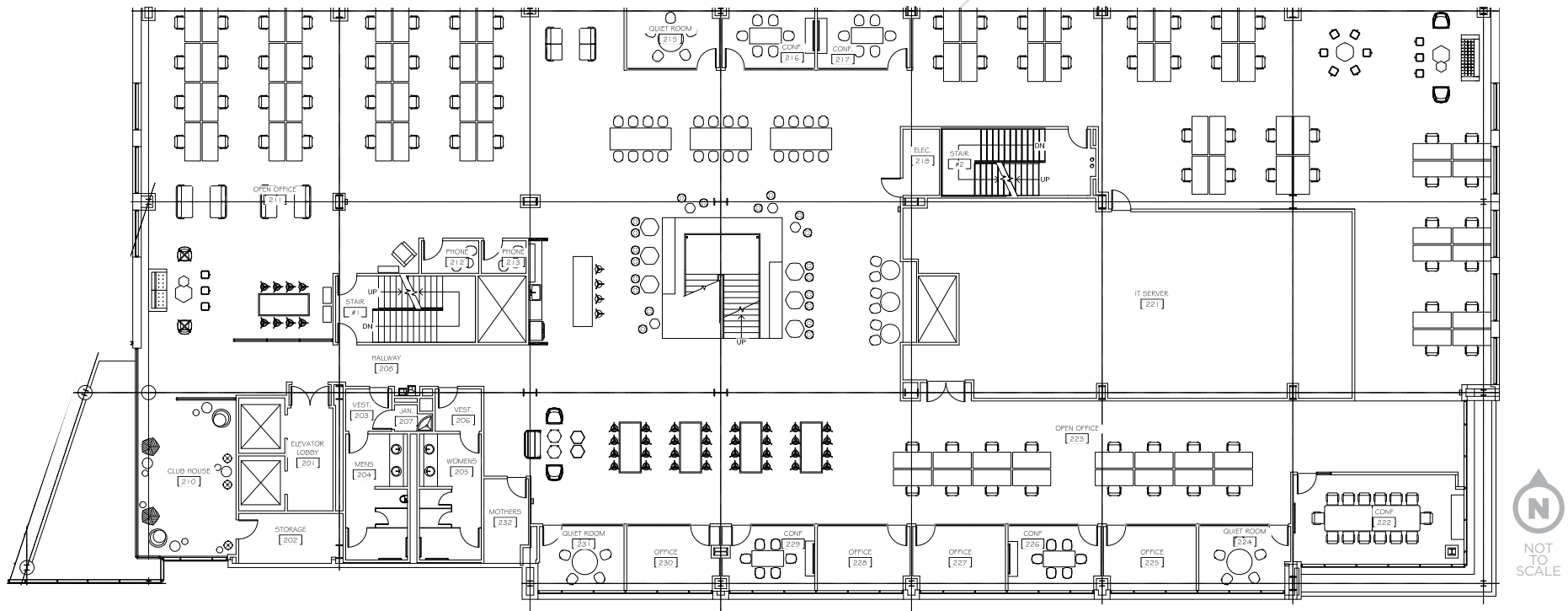
CONFERENCE & MEETING ROOMS: X  
COLLABORATION AREAS: X  
OPEN OFFICE SPACES: X

MOTHERS ROOM: X  
BREAK AREA: X



# FLOOR PLANS

1376 BORDEAUX DRIVE  
SECOND FLOOR



## ROOM COUNT:

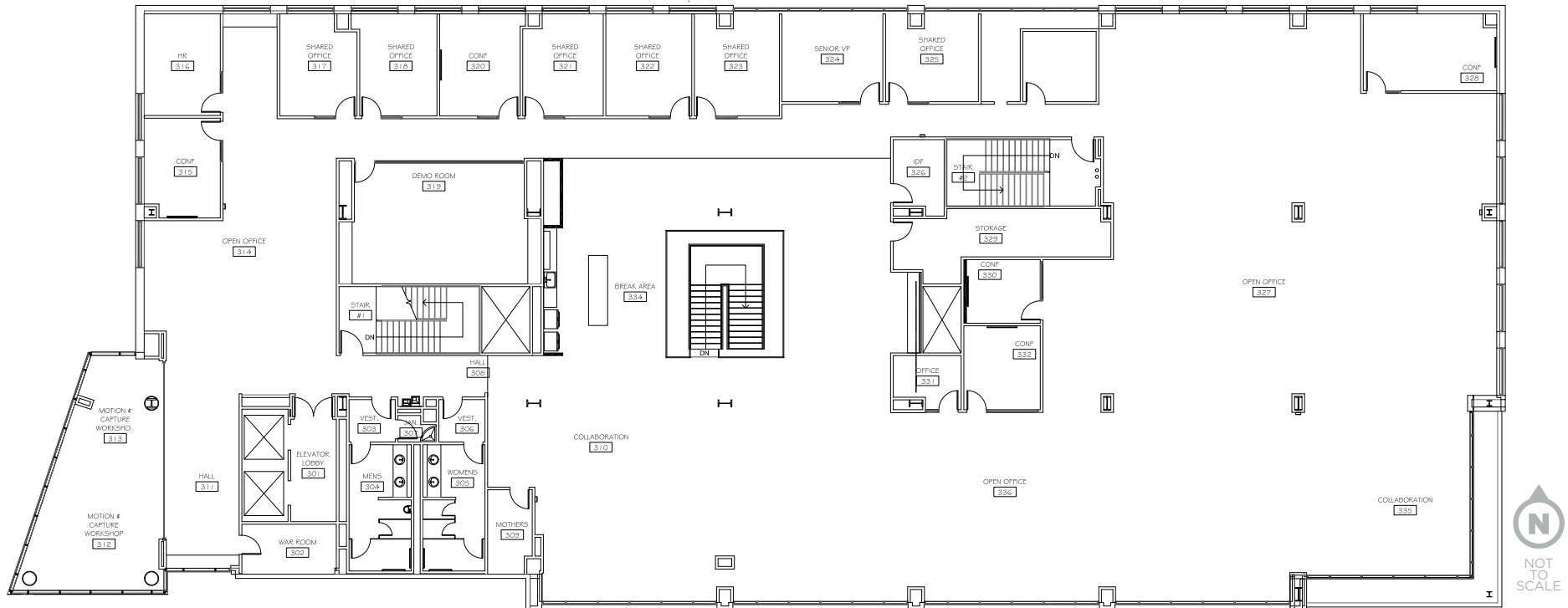
SHARED OFFICES: X  
PRIVATE OFFICES: X

CONFERENCE & MEETING ROOMS: X  
COLLABORATION AREAS: X  
OPEN OFFICE SPACES: X

MOTHERS ROOM: X  
BREAK AREA: X

# FLOOR PLANS

1376 BORDEAUX DRIVE  
THIRD FLOOR



## ROOM COUNT:

SHARED OFFICES: 6  
PRIVATE OFFICES: 3

CONFERENCE & MEETING ROOMS: 8  
COLLABORATION AREAS: 2  
OPEN OFFICE SPACES: 3

MOTHERS ROOM: 1  
BREAK AREA: 1



# LOCATION

## SUNNYVALE, CA



facebook

Microsoft

GLOBAL TECH  
COMPANY

GLOBAL TECH  
COMPANY

Matterport

JUNIPER  
NETWORKS

BORDEAUX  
CENTRE  
1376 & 1380 BORDEAUX DR

amazon  
Lab126

LOCKHEED MARTIN

JFrog

NetApp

GLOBAL TECH  
COMPANY

ACCURAY

Finisar

Cepheid

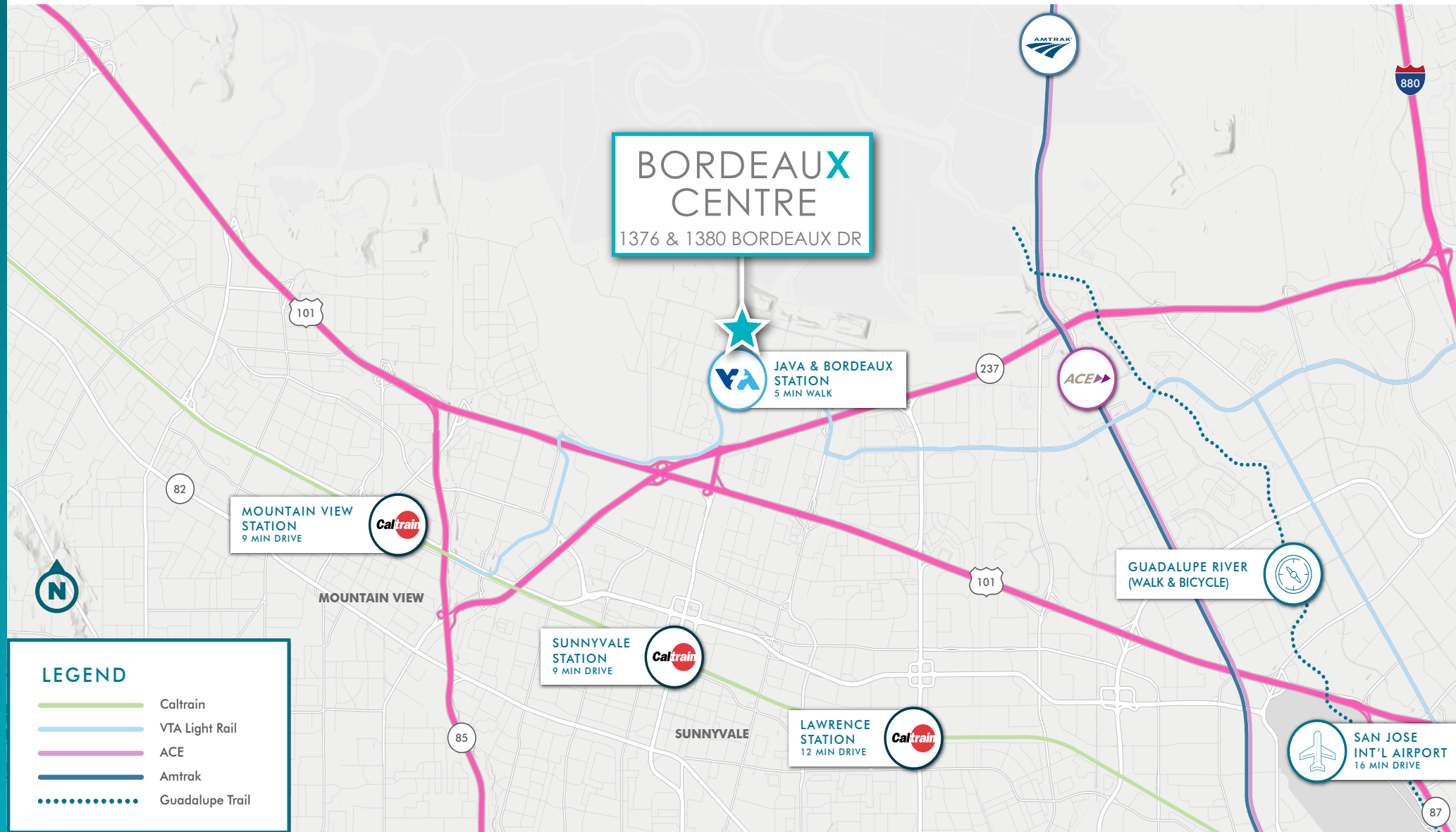
San Francisco Bay Trail  
Smart Station Trail





# TRANSPORTATION MAP

## SUNNYVALE, CA







FOR MORE INFORMATION, PLEASE CONTACT:

**VINCENT SCOTT**

Executive Vice President  
Lic. 01833636  
+1.408.453.7433  
[vincent.scott@cbre.com](mailto:vincent.scott@cbre.com)

**ROCHELLE IMANI**

Transaction Manager  
Lic 02075386  
T 1 408 467 7583  
[rochelle.imani@cbre.com](mailto:rochelle.imani@cbre.com)