

MEADOWS CORPORATE PARK

Meadows I
12510 Prosperity Dr, Silver Spring, MD 20904



OFFICE SPACE FOR LEASE

HIGHLIGHTS:

- Ideally located near Route 29, ICC, I-95 and I-495 with convenient access to Baltimore-Washington International airport.
- 6 minutes (1.6 mi.) to ICC | 7 minutes (2.6 mi.) to I-95 | 10 minutes (4.2 mi) to I-495
- Free surface parking.
- Adjacent retail centers, hotels and restaurants.
- Responsive local ownership and management.

OWNED BY:

DSC Partners
A Donatelli | Smith Capital Company

Kenneth Fellows
kfellows@klnb.com
301-222-0210

Robert Pugh
rpugh@klnb.com
301-222-0211

Keiry Martinez
kmartinez@klnb.com
703-334-5629

klnb

MEADOWS CORPORATE PARK

Meadows I
12510 Prosperity Dr, Silver Spring, MD 20904



SITE AERIAL

Kenneth Fellows
kfellows@klnb.com
301-222-0210

Robert Pugh
rpugh@klnb.com
301-222-0211

Keiry Martinez
kmartinez@klnb.com
703-334-5629

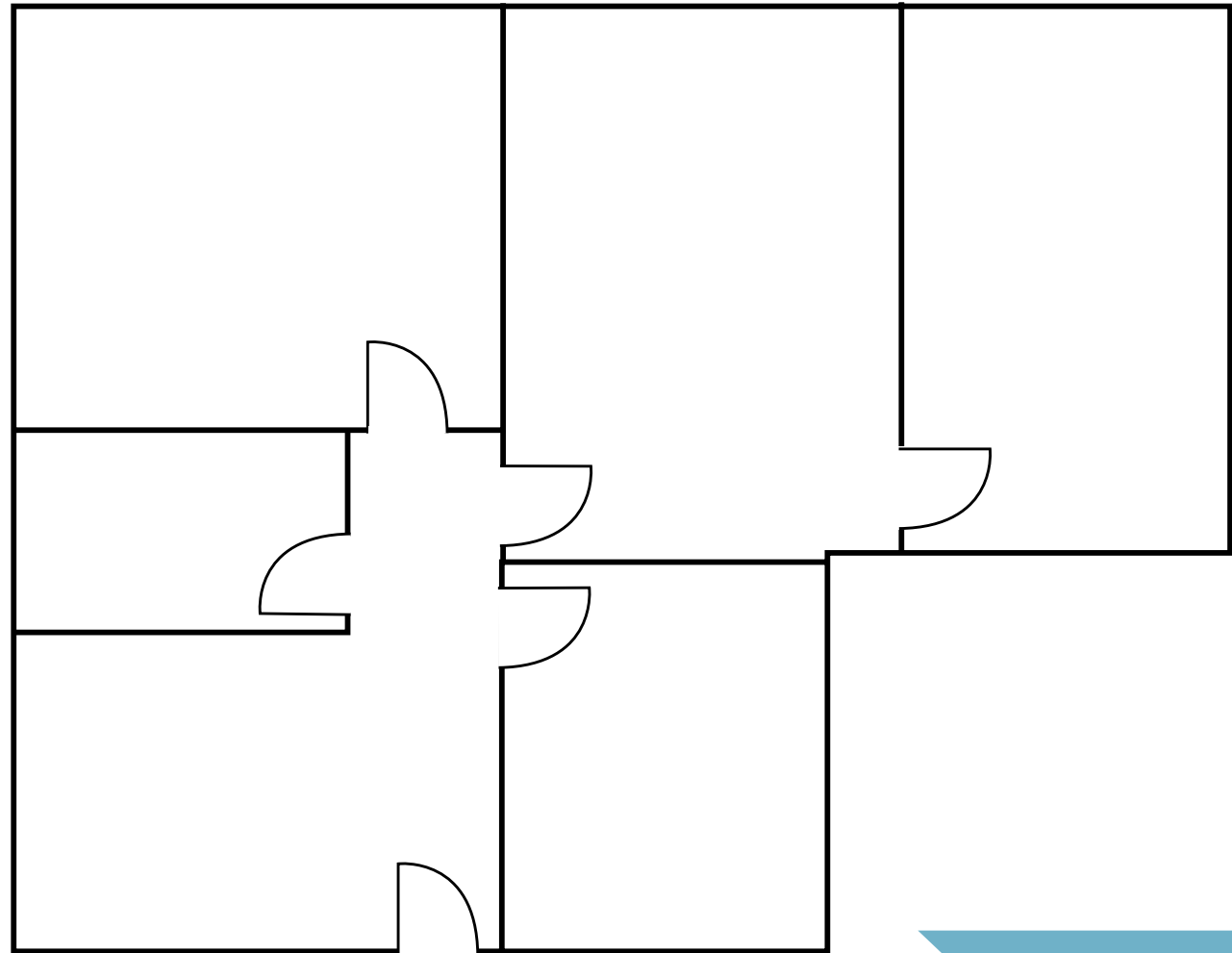
klnb

MEADOWS CORPORATE PARK

Meadows I
12510 Prosperity Dr, Silver Spring, MD 20904

FIRST FLOOR

Suite 150 | 1,129 SF



FLOOR PLAN

Kenneth Fellows
kfellows@klnb.com
301-222-0210

Robert Pugh
rpugh@klnb.com
301-222-0211

Keiry Martinez
kmartinez@klnb.com
703-334-5629



MEADOWS CORPORATE PARK

Meadows I
12510 Prosperity Dr, Silver Spring, MD 20904

For More Information, Please Contact:

Kenneth Fellows

kfellows@klNb.com

301-222-0210

Robert Pugh

rpugh@klNb.com

301-222-0211

Keiry Martinez

kmartinez@klNb.com

703-334-5629

12435 Park Potomac Ave, Suite 250
Rockville, MD 20854

klNb.com



[instagram.com/klNbcre](https://www.instagram.com/klNbcre)



[linkedin.com/company/klNb](https://www.linkedin.com/company/klNb)



[facebook.com/KLNBCRE](https://www.facebook.com/KLNBCRE)

While we have no reason to doubt the accuracy of any of the information supplied, we cannot, and do not, guarantee its accuracy. All information should be independently verified prior to a purchase or lease of the property. We are not responsible for errors, omissions, misuse, or misinterpretation of information contained herein and make no warranty of any kind, express or implied, with respect to the property or any other matters.

klNb