



2800 Campus Parkway

Riverside, California 92507

Lease Highlights

- Available July 2025
- Class A 10,000 SF Available.
- Anchored by Target, Five Below, PetSmart, McDonalds & more
- Pylon Sign, Signalized Intersection, Freeway Visibility
- Densely Populated - Over 250K Within 5-Miles
- High Incomes - Over \$90K Annual within 5-Miles
- Easy Access to I-215 and I-60

Offering Summary

Available SF:	10,000 SF
Lease Rate:	\$2.25 SF/month (\$0.64)

Demographics	1 Mile	3 Miles	5 Miles
Total Households	3,973	30,745	73,557
Total Population	12,931	102,840	257,038
Average HH Income	\$87,271	\$97,157	\$108,979

For more information

Steve Liu, Executive Vice President

O: 949.468.2385
sliu@naicapital.com | CalDRE #01323150

Alex Tohidian, Senior Associate

O: 949.438.2335
atohidian@naicapital.com | CalDRE #02185779

Nikki Liu, Senior Associate

O: 949.468.2386
nliu@naicapital.com | CalDRE #02038755

For Lease

2800 Campus Parkway



Steve Liu

Executive Vice President
949.468.2385
sliu@naicapital.com
CalDRE #01323150

Alex Tohidian

Senior Associate
949.438.2335
atohidian@naicapital.com
CalDRE #02185779

Nikki Liu

Senior Associate
949.468.2386
nliu@naicapital.com
CalDRE #02038755

NAICapital
COMMERCIAL REAL ESTATE SERVICES, WORLDWIDE

For Lease

2800 Campus Parkway



Steve Liu

Executive Vice President
949.468.2385
sliu@naicapital.com
CalDRE #01323150

Alex Tohidian

Senior Associate
949.438.2335
atohidian@naicapital.com
CalDRE #02185779

Nikki Liu

Senior Associate
949.468.2386
nliu@naicapital.com
CalDRE #02038755

For Lease

2800 Campus Parkway



Steve Liu

Executive Vice President
949.468.2385
sliu@naicapital.com
CalDRE #01323150

Alex Tohidian

Senior Associate
949.438.2335
atohidian@naicapital.com
CalDRE #02185779

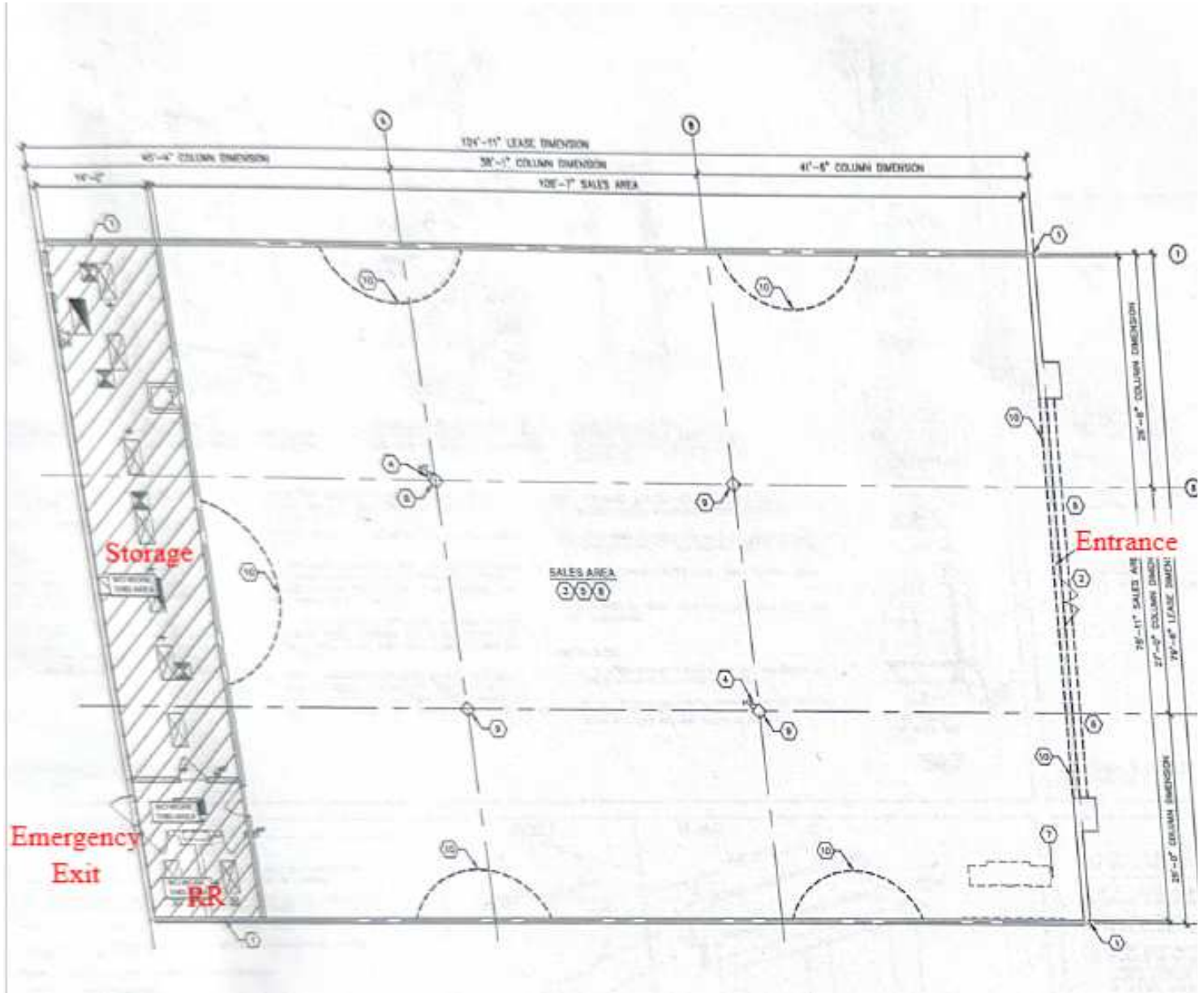
Nikki Liu

Senior Associate
949.468.2386
nliu@naicapital.com
CalDRE #02038755

NAICapital
COMMERCIAL REAL ESTATE SERVICES, WORLDWIDE

For Lease

2800 Campus Parkway



Steve Liu

Executive Vice President
949.468.2385
sliu@naicapital.com
CalDRE #01323150

Alex Tohidian

Senior Associate
949.438.2335
atohidian@naicapital.com
CalDRE #02185779

Nikki Liu

Senior Associate
949.468.2386
nliu@naicapital.com
CalDRE #02038755