

# AXIS 360

COMMERCIAL REAL ESTATE

3001 ½ Gill St.  
Suite A  
Bloomington, IL  
61704  
[axis360.co](http://axis360.co)

## BUILDING SIZE

4,600 SF

## YEAR BUILT

1974

## LEASE TYPE

NNN

## AVAILABLE SPACE

4,600 SF

## LEASE RATE

\$13.00/SF (\$4,983/mo)

## TAXES (2023)

\$14,250

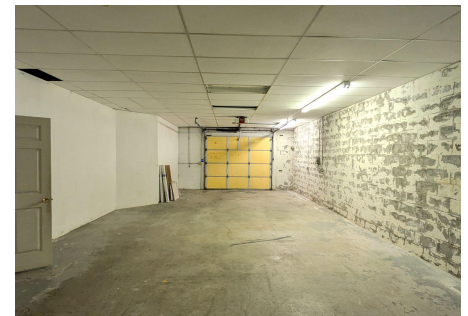
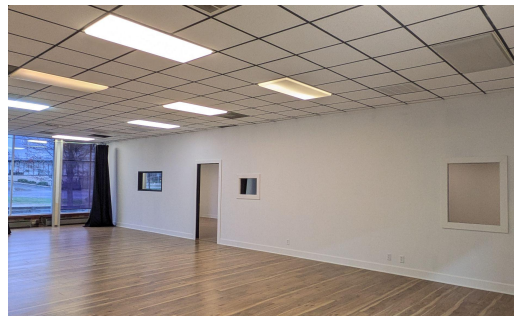


## 3 TOWANDA SERVICE RD, BLOOMINGTON OFFICE | RETAIL | FLEX | LEASE or SALE

Freestanding building at the corner of E. Empire and Towanda Avenue available for lease. Large open rooms, which could be opened up further depending on need. New LVT flooring throughout.

- Great visibility
- Good parking
- Large open spaces
- 2 restrooms and a mop sink
- Garage space with overhead door (no floor drain)
- Back office with private entrance
- Sale Price: \$550,000

*The statements and figures herein, while not guaranteed, are secured from sources we believe authoritative. This information is for illustrative purposes only.*



Meghan O'Neal-Rogozinski, CCIM

[meghan.oneal@axis360.co](mailto:meghan.oneal@axis360.co)

309-532-1808

Michael O'Neal

[moneal@axis360.co](mailto:moneal@axis360.co)

309-530-3591

