

±61,130 SF
AVAILABLE FOR LEASE

LBA Logistics 

CBRE

High-Bay Distribution Facility

±61,130 SF
AVAILABLE

150 HAYES MEMORIAL DRIVE

NORTHBOROUGH, MA

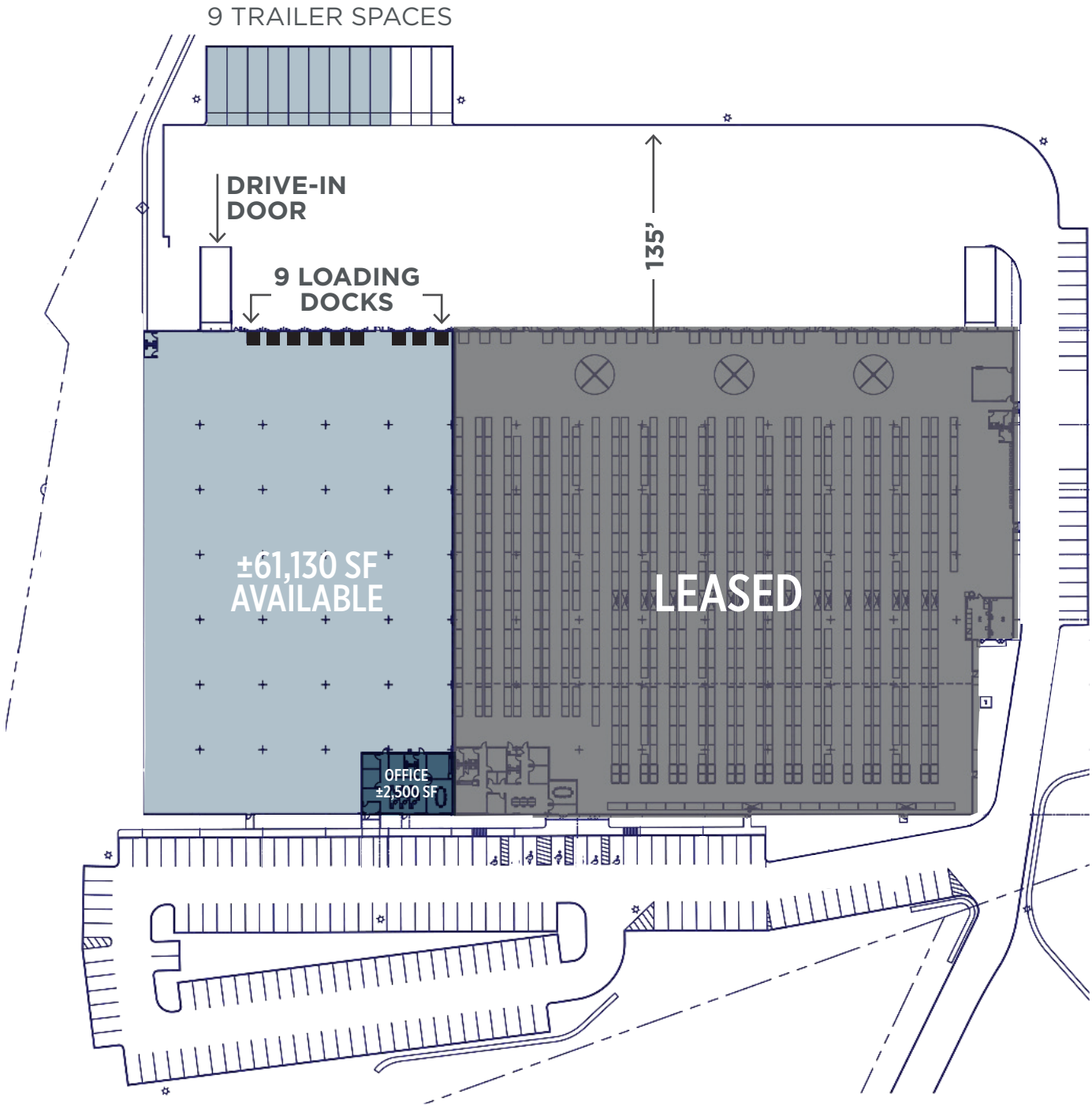


BUILDING SPECIFICATIONS

Building SF:	±167,438 SF	Truck Court:	135' – 185'
Available SF:	±61,130 SF Warehouse: ±58,630 SF Office: ±2,500 SF	Lighting:	LED
Acres:	±23.82 Acres	Sprinkler:	ESFR
Clear Height:	32'	Construction:	Concrete tilt-up panels
Column Spacing:	40' x 41'4" 60' Speed Bay	Floor:	6" floors, 4,000 PSI
Loading Docks:	Nine (9) loading docks One (1) drive-in door	Power:	2,000 amps, 480 volt, 3-phase, 4-wire (to be verified into the availability)
Auto Parking:	1.00/1,000 SF	Utilities:	Electric: National Grid Gas: Eversource Water: Northborough Water Department
Trailer Parking:	9 stalls with 7" thick dolly pad		



SITE PLAN | ±61,130 SF AVAILABLE



THE METROWEST TRANSPORTATION ADVANTAGE



<1 Mile
to Route 20



2.31 Miles
to I-495



3.98 Miles
to I-290



5.96 Miles
to Route 9



7.57 Miles
to I-90



8.80 Miles
to Framingham/
Worcester
Commuter Rail



15.50 Miles
to Worcester

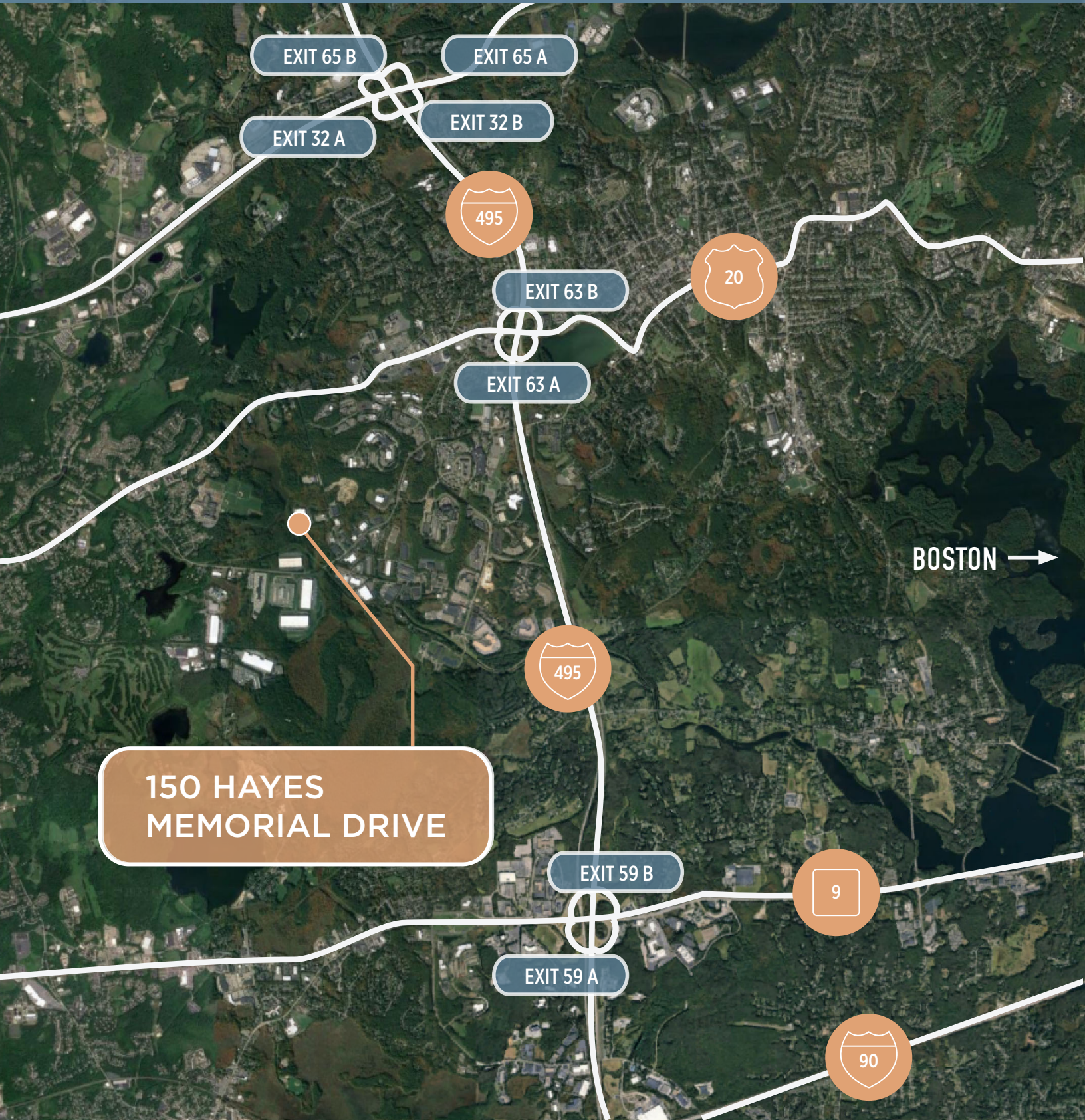


35.2 Miles
to Boston



37.1 Miles
to Logan Airport





EXIT 65 B

EXIT 65 A

EXIT 32 A

EXIT 32 B

495

EXIT 63 B

20

EXIT 63 A

BOSTON →

495

150 HAYES
MEMORIAL DRIVE

EXIT 59 B

9

EXIT 59 A

90

LABOR AVAILABILITY

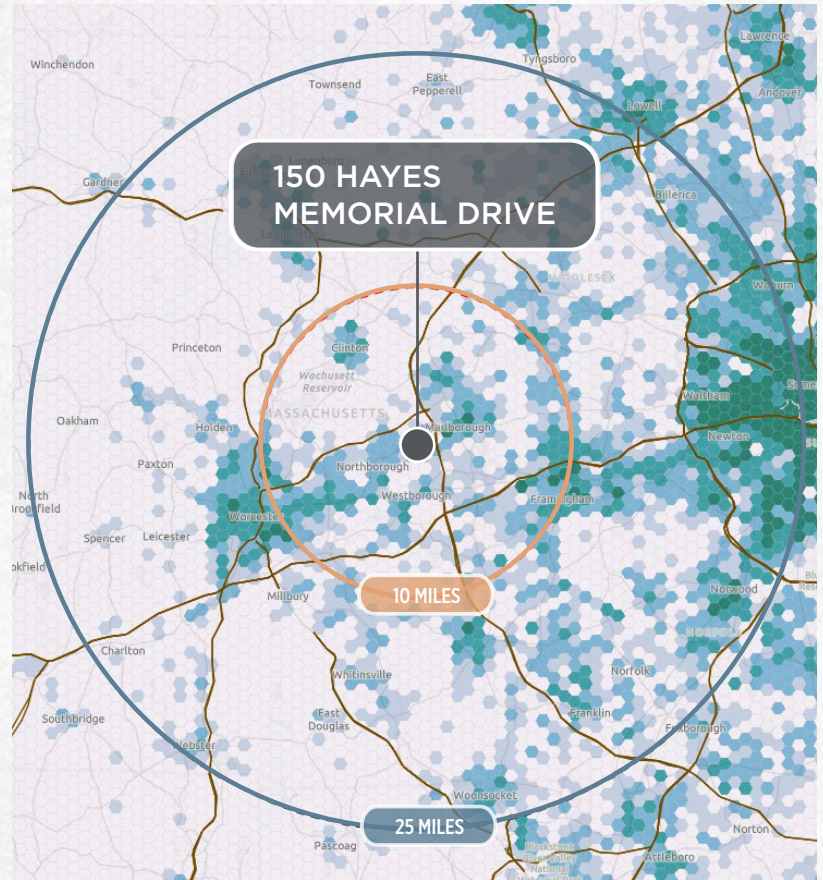
The Northborough area encompasses a large population, generating a consistent supply of both consumers and available labor, which serve as vital ingredients to a productive manufacturing or distributing tenant. Within 150 Hayes Memorial Drive's immediately accessible labor pool, the population is highly educated and the supply of those operating in the technical and manufacturing sectors are higher than what is experienced in urban Boston.

Educated Pop. Density



LOW

HIGH



KEY STATS - 10 MILES

331K
population
within 10 miles

65%
of adult population has
earned an Associate's
Degree or higher

1.39X
of the employed
population work in
technical occupations*
(vs. Boston MSA @ 1.0)

1.37X
of the employed population
are working in the
manufacturing industry**
(vs. Boston MSA @ 1.0)

KEY STATS - 25 MILES

2.31M
population
within 25 miles

64%
of adult population has
earned an Associate's
Degree or higher

1.18X
of the employed
population work in
technical occupations*
(vs. Boston MSA @ 1.0)

1.13X
of the employed population
are working in the
manufacturing industry**
(vs. Boston MSA @ 1.0)

CORPORATE NEIGHBORS AND LOCAL AMENITIES

AMENITIES

Apex Center - 3 Miles

- Chick-Fil-A
- Hyatt Regency
- B.Good
- Bank of America
- TITLE Boxing
- Fairfield Inn Suites by Marriot
- Evviva Trattoria
- Dalla Nails & Spa
- Protein House
- Qdoba Mexican Eats
- Friendly's
- Hot Table Panini
- Muse Paintbar
- Half Axe
- Oxford Smiles
- Euorpean Wax Center
- Dellaria Salons
- Pro Clean Auto Wash
- Sports Clips
- 110 Grill
- Moderna

RK Center - 3 Miles

- Panera
- Embassy Suites
- Office Max
- Five Guys
- McDonalds
- Hannaford
- Starbucks
- Boston Market
- Planet Fitness
- Subway
- Chipotle
- Longhorn Steakhouse

CORPORATE NEIGHBORS



FOR MORE INFO,
PLEASE CONTACT:

Rob Byrne

Executive Vice President

+1 617 827 7486

robert.byrne@cbre.com

Danielle Frisch

Senior Vice President

+1 781 964 0575

danielle.frisch@cbre.com

Chris Mullen

Senior Vice President

+1 781 801 4432

chris.mullen2@cbre.com

Kendall Lynch

Vice President

+1 781 812 6435

kendall.lynch@cbre.com

LBALogistics 

CBRE

© 2026 CBRE, Inc. All rights reserved. This information has been obtained from sources believed reliable but has not been verified for accuracy or completeness. CBRE, Inc. makes no guarantee, representation or warranty and accepts no responsibility or liability as to the accuracy, completeness, or reliability of the information contained herein. You should conduct a careful, independent investigation of the property and verify all information. Any reliance on this information is solely at your own risk. CBRE and the CBRE logo are service marks of CBRE, Inc. All other marks displayed on this document are the property of their respective owners, and the use of such marks does not imply any affiliation with or endorsement of CBRE. Photos herein are the property of their respective owners. Use of these images without the express written consent of the owner is prohibited.