



300

**4th floor (full floor)- 4,959 SF &
5th floor (full floor) - 4,414 SF**

FLOORS CAN BE LEASED TOGETHER

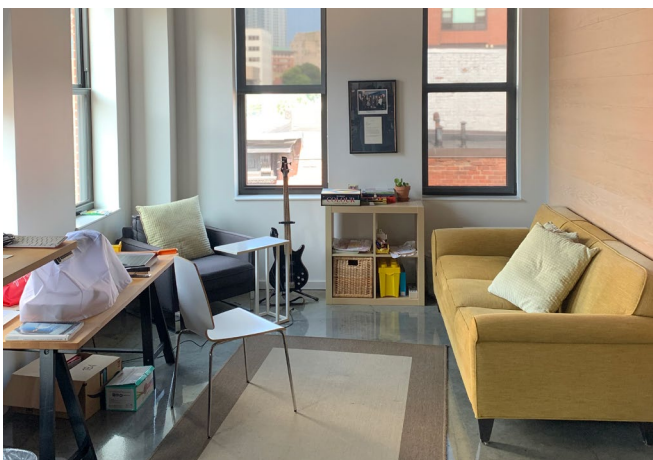
**CAMBRIDGE
STREET**

BOSTON, MA

- Local ownership
- High-end finishes
- Adjacent to the Charles/MGH Red Line MBTA stop
- Located across the street from Mass General, Whole Foods, and multiple parking options
- Retail tenants in the building include Sweetgreen & Dunkin Donuts
- 24/7 key-card entry to the building
- Private deck attached to the 5th floor space

**AVISON
YOUNG**

Space interior



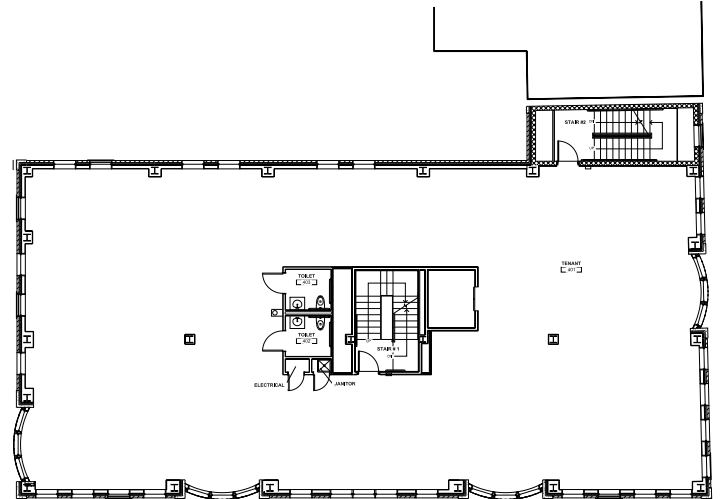
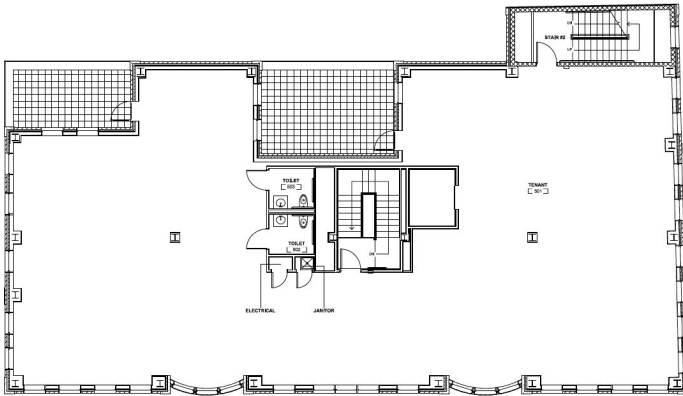


300

CAMBRIDGE STREET

BOSTON, MA

4th floor - 4,959 SF



5th floor - 4,414 SF

For more information, please contact:

Kirk Weller, Senior Vice President
617.456.1363
kirk.weller@avisonyoung.com

200 State Street | 15th Floor | Boston, MA

© 2025. Avison Young. Information contained herein was obtained from sources deemed reliable and, while thought to be correct, have not been verified. Avison Young does not guarantee the accuracy or completeness of the information presented, nor assumes any responsibility or liability for any errors or omissions therein.

**AVISON
YOUNG**