



Saint Mary's Professional Building

**205 NW RD MIZE ROAD
BLUE SPRINGS, MISSOURI**

Property Highlights

- 620 sf to 10,006 sf available
- Located within Saint Mary's Medical Center campus
- Just off 7 Highway and minutes from I-70
- Minutes from retail amenities and restaurants
- Ample onsite parking
- Lease rate negotiable

Available Suites

- Suite 100: 620 sf
- Suite 101: 1,310 sf
- Suite 104: 1,930 sf
- Suite 105: 2,270 sf
- Suite 200: 10,006 sf
- Suite 300: 10,006 sf

For information, please contact:

Nick Suarez, SIOR, CCIM

Executive Managing Director, Principal

t 816-512-1012

nsuarez@nzimmer.com

Trey DeRousse

Associate Director

t 816-268-4236

tderousse@nzimmer.com

1220 Washington Street, Suite 300
Kansas City, MO 64105

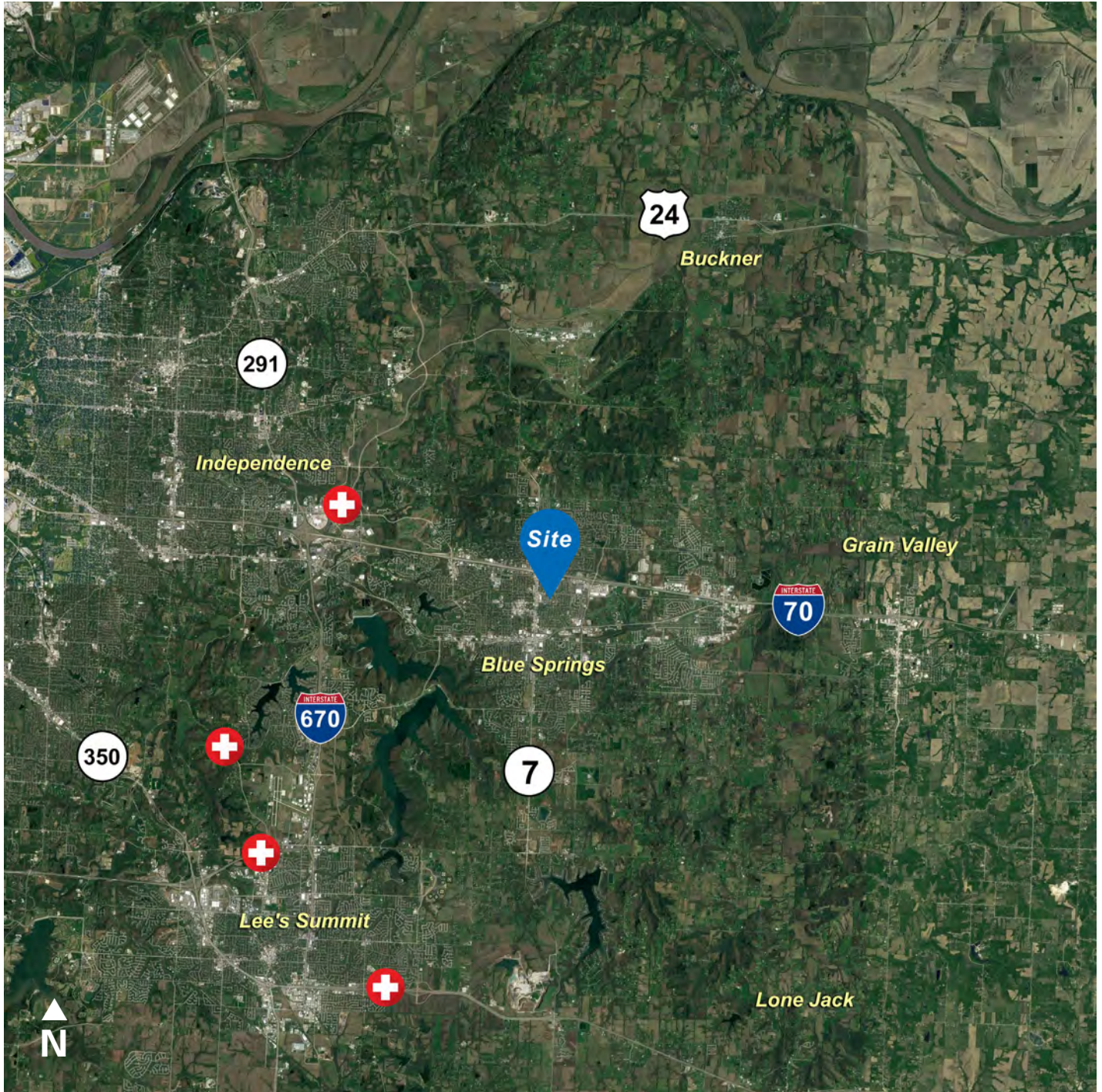
nrmkzimmer.com



**NEWMARK
ZIMMER**

The information contained herein has been obtained from sources deemed reliable but has not been verified and no guarantee, warranty or representation, either express or implied, is made with respect to such information. Terms of sale or lease and availability are subject to change or withdrawal without notice.

205 NW RD MIZE ROAD, BLUE SPRINGS, MISSOURI

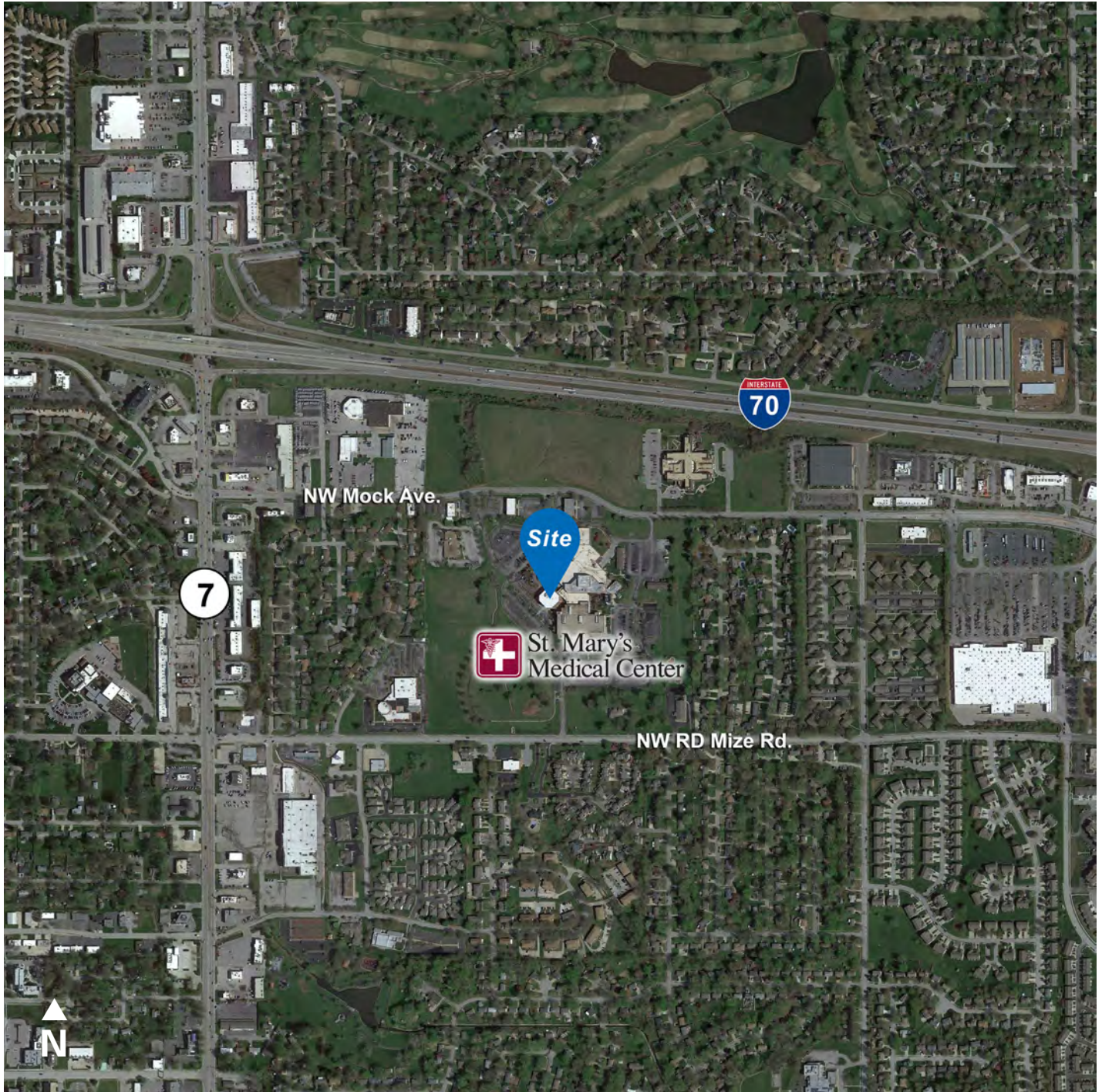


CONTACT

Nick Suarez, SIOR, CCIM
Executive Managing Director, Principal
t 816-512-1012
nsuarez@nzimmer.com
nmrkzimmer.com

Trey DeRousse
Associate Director
t 816-268-4236
tderousse@nzimmer.com

205 NW RD MIZE ROAD, BLUE SPRINGS, MISSOURI



CONTACT

Nick Suarez, SIOR, CCIM
Executive Managing Director, Principal
t 816-512-1012
nsuarez@nzimmer.com

nrmzimmer.com

Trey DeRousse
Associate Director
t 816-268-4236
tderousse@nzimmer.com

NEWMARK
ZIMMER

205 NW RD MIZE ROAD, BLUE SPRINGS, MISSOURI

Floor Plan



CONTACT

Nick Suarez, SIOR, CCIM
Executive Managing Director, Principal
t 816-512-1012
nsuarez@nzimmer.com

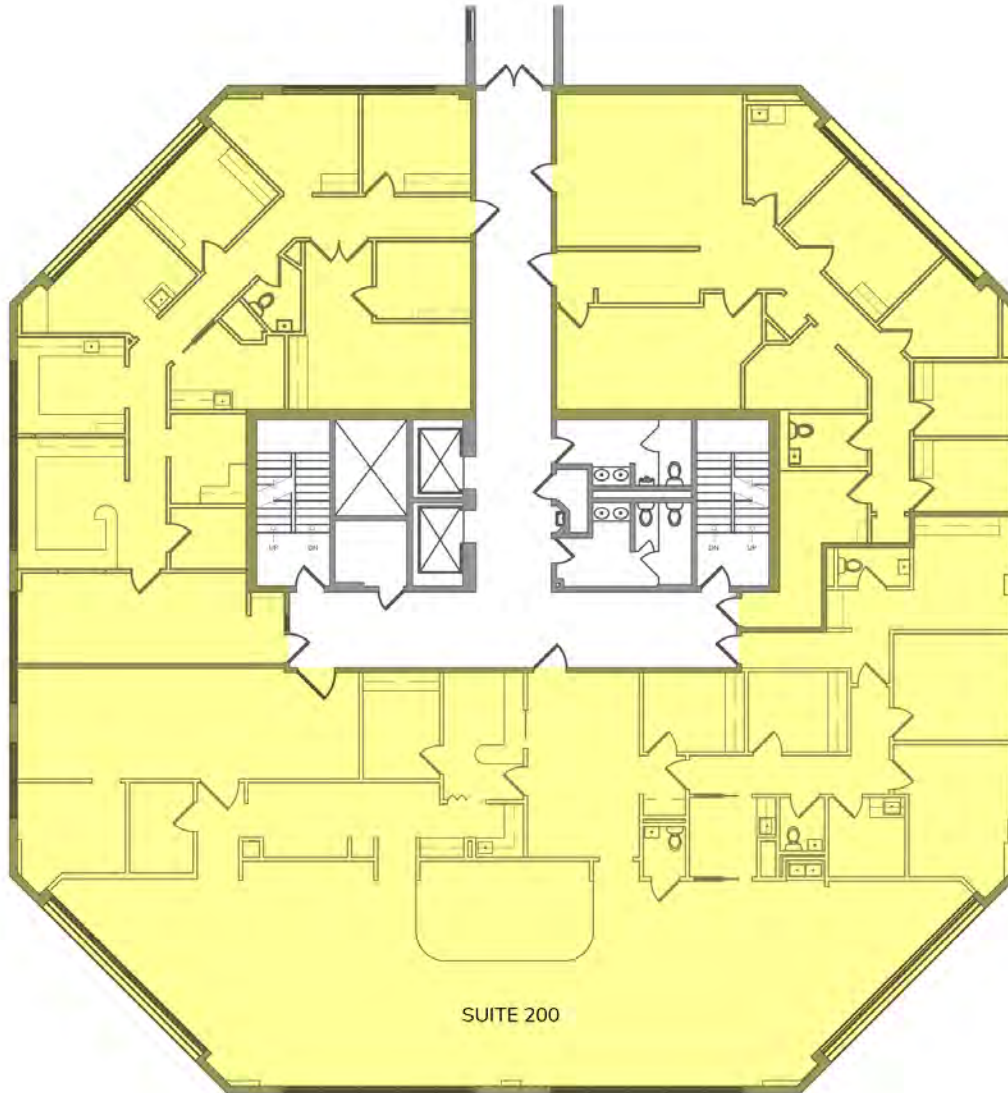
nmrkzimmer.com

Trey DeRousse
Associate Director
t 816-268-4236
tderousse@nzimmer.com

NEWMARK
ZIMMER

205 NW RD MIZE ROAD, BLUE SPRINGS, MISSOURI

Floor Plan



CONTACT

Nick Suarez, SIOR, CCIM
Executive Managing Director, Principal
t 816-512-1012
nsuarez@nzimmer.com

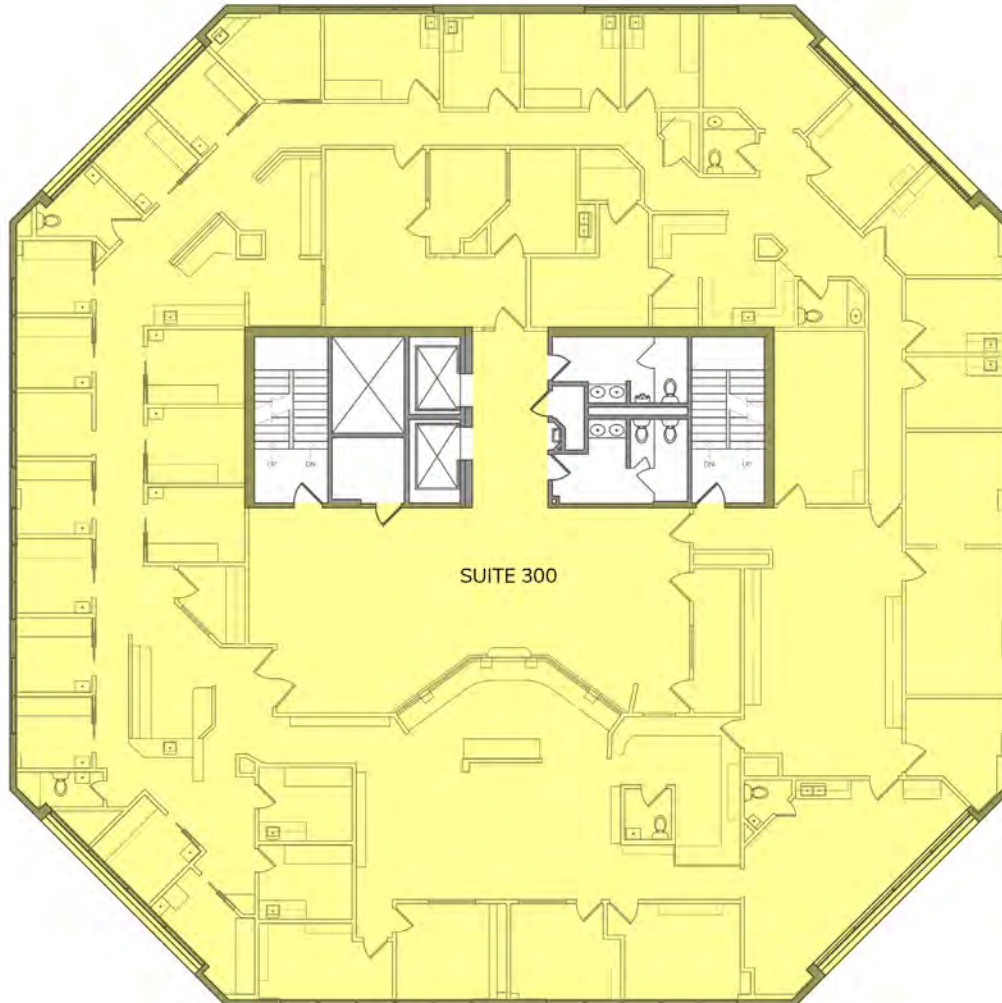
nmrkzimmer.com

Trey DeRousse
Associate Director
t 816-268-4236
tderousse@nzimmer.com

NEWMARK
ZIMMER

205 NW RD MIZE ROAD, BLUE SPRINGS, MISSOURI

Floor Plan



CONTACT

Nick Suarez, SIOR, CCIM

Executive Managing Director, Principal

t 816-512-1012

nsuarez@nzimmer.com

nmrkzimmer.com

Trey DeRousse

Associate Director

t 816-268-4236

tderousse@nzimmer.com

NEWMARK
ZIMMER