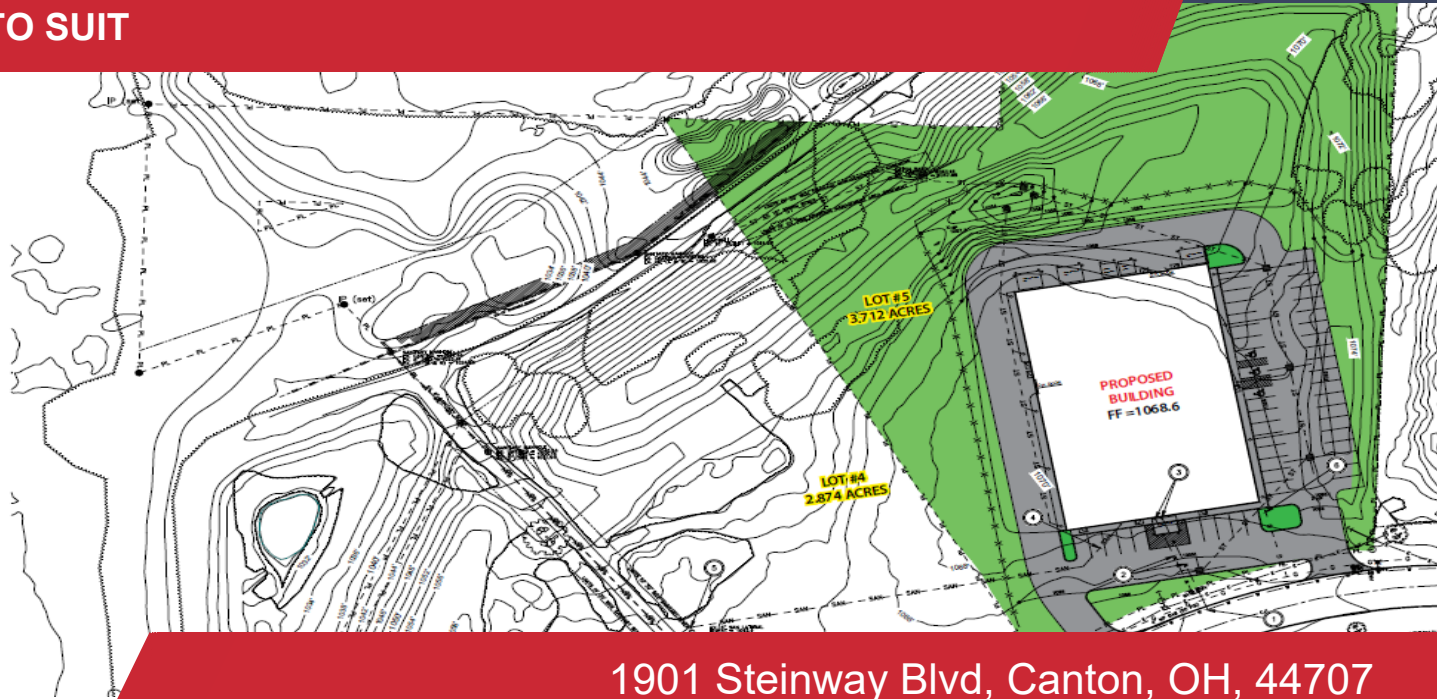


**FOR LEASE 20,000 SQ.FT. INDUSTRIAL BUILDING**

**PUTMAN  
PROPERTIES**

*Integrity and Trust Since 1985*

**BUILD TO SUIT**



**1901 Steinway Blvd, Canton, OH, 44707**

Easy access from Route 30 and S.R. 43 via I-77 near the Stein Industrial Park in Canton. Join Pull-A-Part, Hydrodec and Accurate Truck & Car.

**Lease Rate:**  
**Sq.Ft:**  
**\$/Mo:**

**Industrial**

20,000

Gas/Electric:  
Water/Sewer:  
Taxes/Insur:  
Maint/Repairs:

**Tenant**

**Owner**



**Tim Putman**

Cell: (330) 495-0600

tputman@putmanproperties.com



**Wick Hartung**

Cell: (330) 495-0601

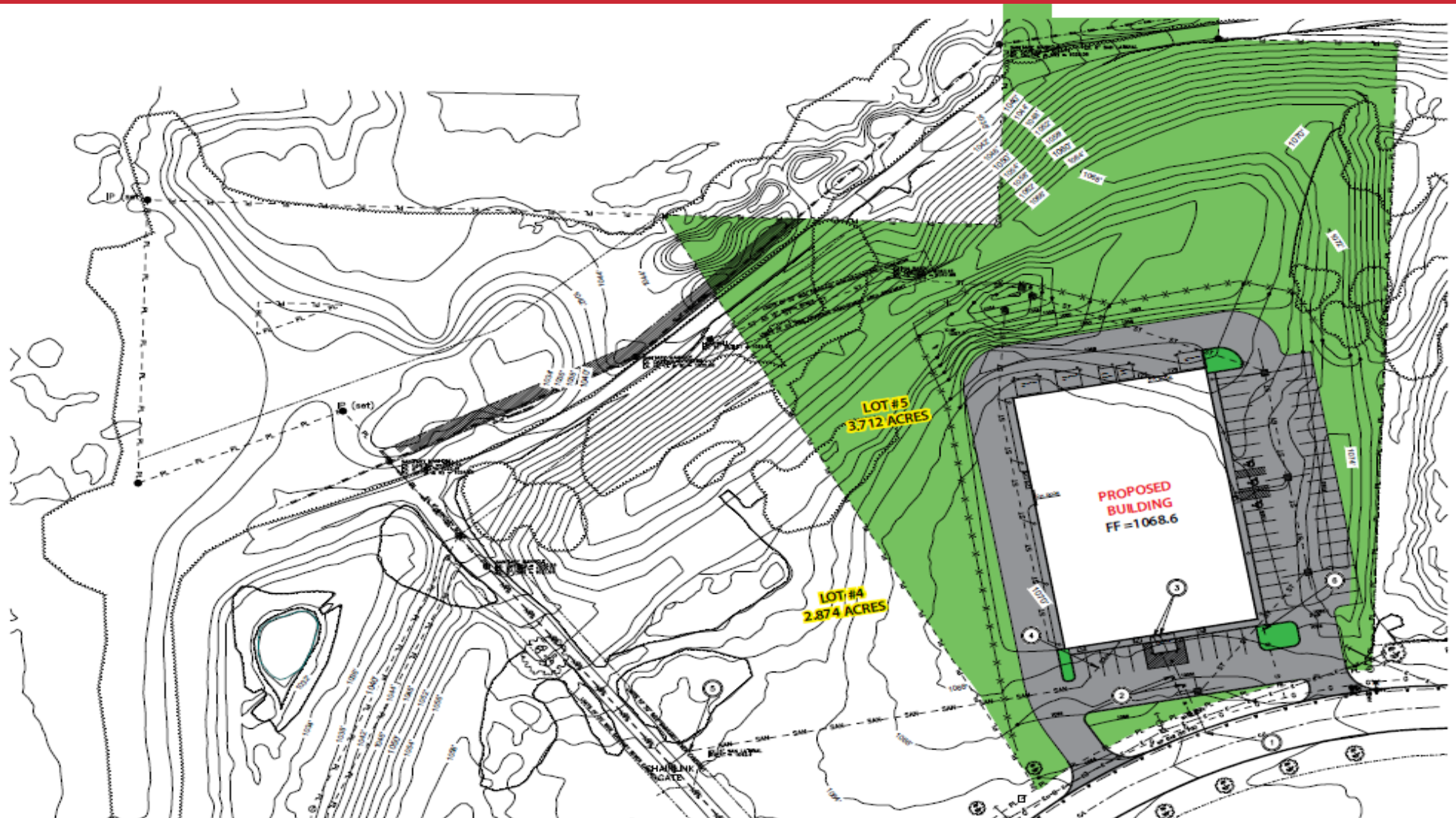
wick@putmanproperties.com

[www.putmanproperties.com](http://www.putmanproperties.com)

4065 Fulton Dr. NW  
Canton, OH 44718

# FOR LEASE 20,000 SQ.FT. INDUSTRIAL BUILDING

1901 Steinway Blvd, Canton, OH, 44707



**Tim Putman**

Cell: (330) 495-0600

tputman@putmanproperties.com



**Wick Hartung**

Cell: (330) 495-0601

wick@putmanproperties.com





# FOR LEASE 20,000 SQ.FT. INDUSTRIAL BUILDING

1901 Steinway Blvd, Canton, OH, 44707

## BUILDING INFO

Total Sq Ft: 20000  
Industrial: 20000  
Units: 1  
Year Built: 2019

## UTILITIES

Gas: Dominion East Ohio Gas  
Electric: AEP  
Water: Canton City  
Sewer: Canton City  
Internet: Spectrum

## ADDITIONAL INFO

- Built to suit
- Lease or lease option
- Easy access from Route 30 and S.R. 43 via I-77 near the Stein Industrial Park in Canton.
- Join Pull-A-Part, Hydrodec, Absolute Auto & Truck Technicians



**Tim Putman**

Cell: (330) 495-0600

tputman@putmanproperties.com



**Wick Hartung**

Cell: (330) 495-0601

wick@putmanproperties.com





# FOR LEASE 20,000 SQ.FT. INDUSTRIAL BUILDING

1901 Steinway Blvd, Canton, OH, 44707



**Tim Putman**

Cell: (330) 495-0600

tputman@putmanproperties.com



**Wick Hartung**

Cell: (330) 495-0601

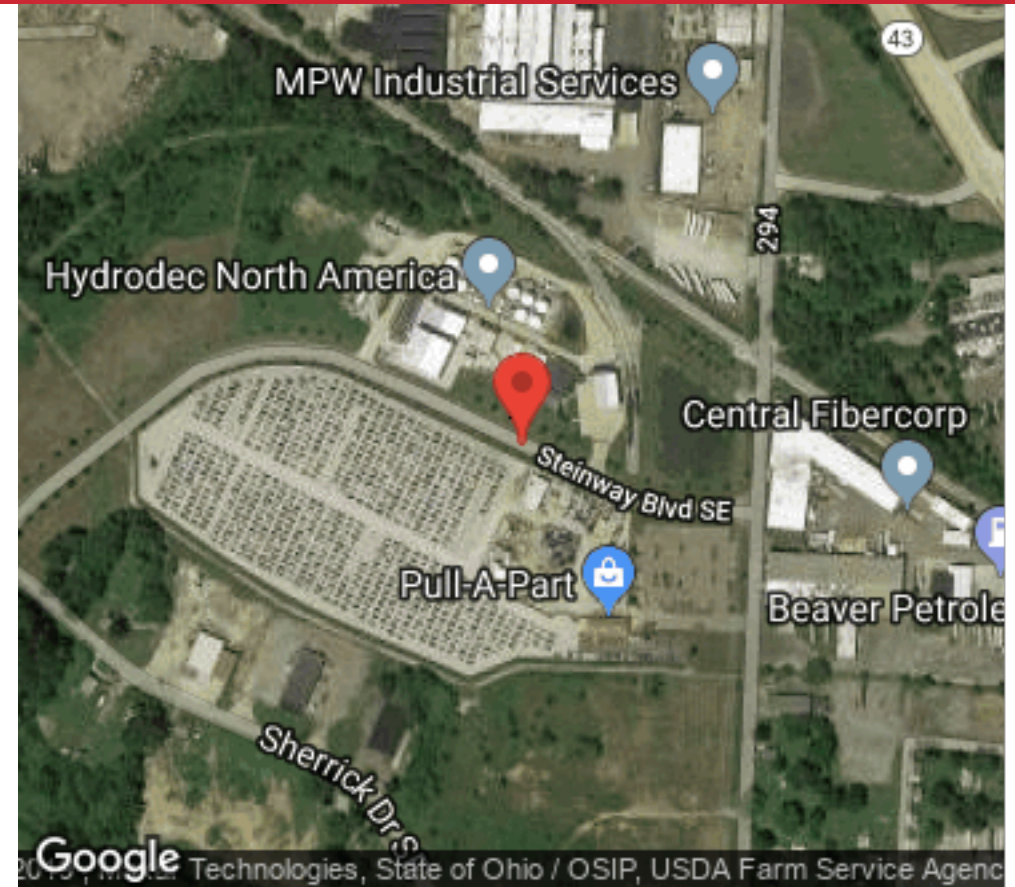
wick@putmanproperties.com





# FOR LEASE 20,000 SQ.FT. INDUSTRIAL BUILDING

1901 Steinway Blvd, Canton, OH, 44707



Directions: I-77 to Route 30 E - Exit #43 S/Waynesburg, right turn on 17th St SE - this becomes Sherrick Dr - property on right.



**Tim Putman**

Cell: (330) 495-0600

tputman@putmanproperties.com



**Wick Hartung**

Cell: (330) 495-0601

wick@putmanproperties.com



# FOR LEASE 20,000 SQ.FT. INDUSTRIAL BUILDING

1901 Steinway Blvd, Canton, OH, 44707



## SITE INFO

Acre(s):	3.71
Frontage:	235'
Depth:	Irrregular
County:	Stark
Zoning:	I-1 Industrial
Topo:	Level
Nearby Hwy:	Route 30 & I-77
Distance:	1/2 Mile
Traffic Count:	N/A
Bus Lines:	yes



4065 Fulton Dr. NW, Canton, OH 44718

[www.putmanproperties.com](http://www.putmanproperties.com)

330-498-4400 | Fax 330-498-3800



**Tim Putman**

Cell: (330) 495-0600

[tputman@putmanproperties.com](mailto:tputman@putmanproperties.com)



**Wick Hartung**

Cell: (330) 495-0601

[wick@putmanproperties.com](mailto:wick@putmanproperties.com)



[www.putmanproperties.com](http://www.putmanproperties.com)