

345 Park Avenue

Rudin





Jack Rudin
Way
East 51st St

Bank of America

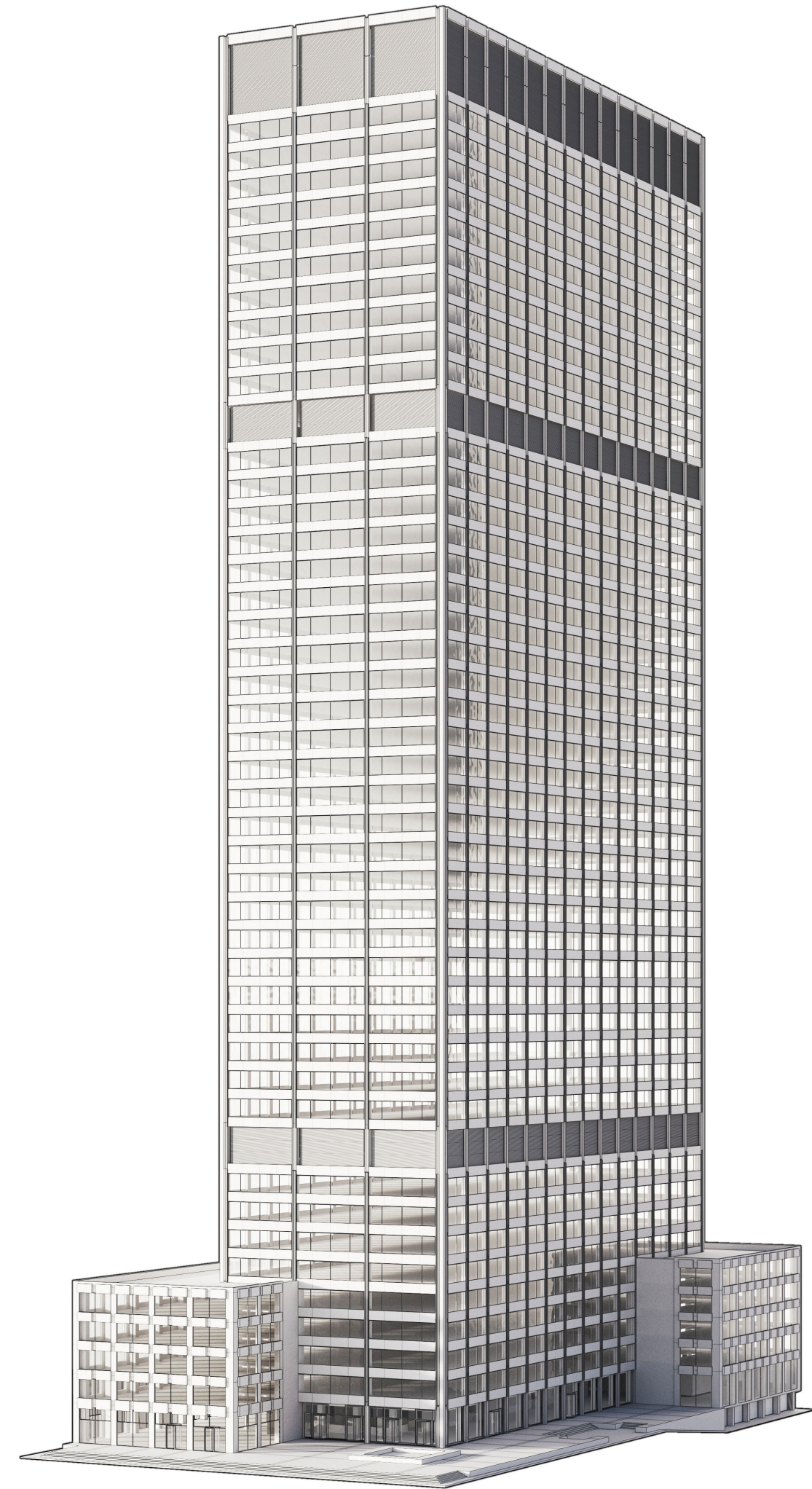
Blackstone

345 PARK AVENUE

Reintroducing 345 Park Avenue

Located on a prestigious stretch of Park Avenue, 345 provides a world class identity for tenants. The full-block building between Park and Lexington Avenues and East 51st and 52nd Streets offers floor plates from 40,000 to 70,000 square feet with exceptional views across Midtown, Central Park and the East River. The 22,000 square foot plaza provides an unparalleled presence on Park Avenue.

The new lobby designed by Skidmore, Owings and Merrill was completed in 2021. The capital improvement program included the installation of new escalators connecting the Park and Lexington levels, new turnstiles with touchless entry, new elevators with touchless calls and new lighting.





A
2-12

B
5-44

345 PARK AVENUE

Freight Entrance
571 Lexington Avenue

Prestigious Park Avenue Presence

Rarely seen availabilities at the full-block Park Avenue tower.

Large center-core floorplates with significant column free runs from Park to Lexington Avenues.

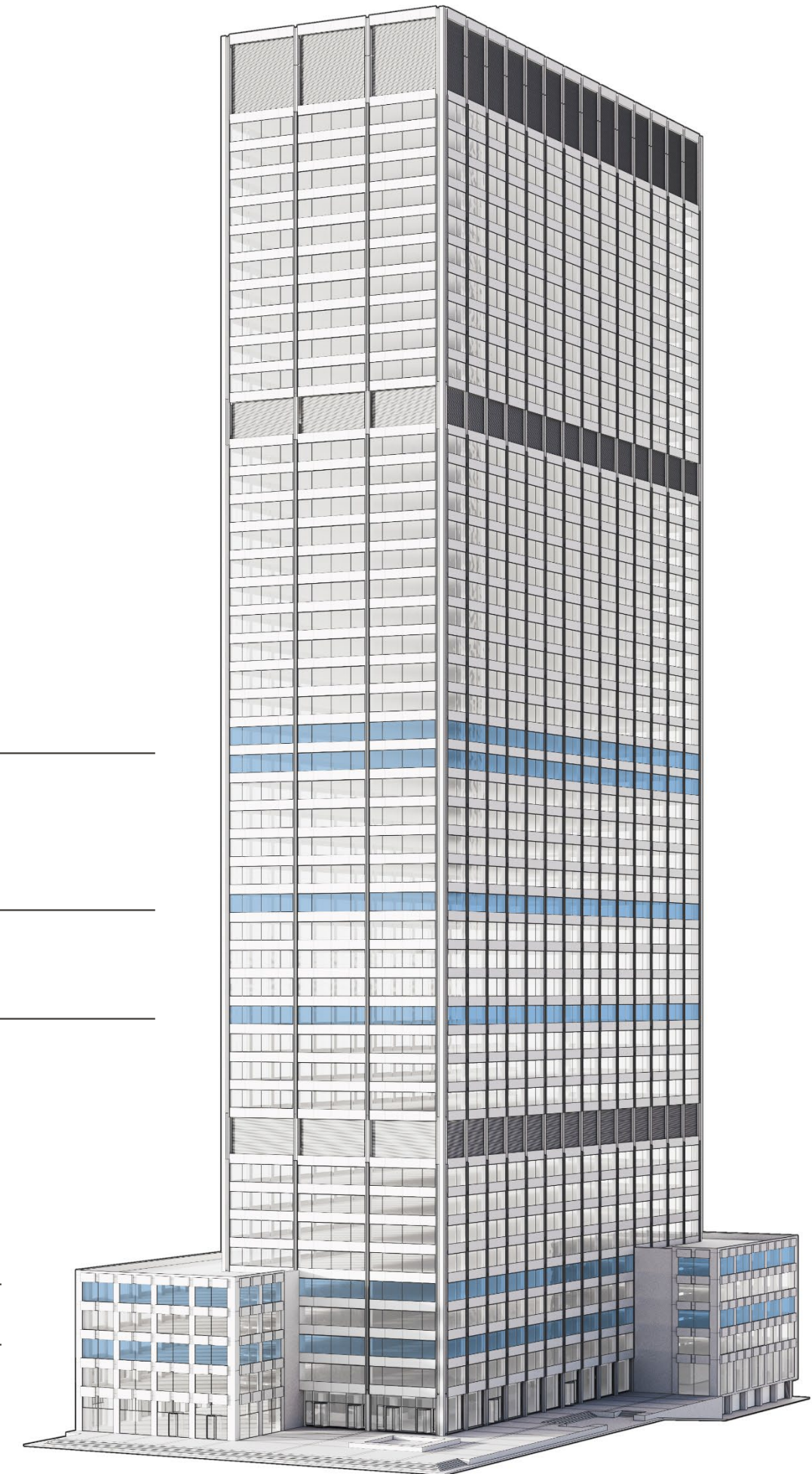
Total RSF: 290,673

E23: 37,913 RSF
E22: 37,913 RSF

E17: 37,841 RSF

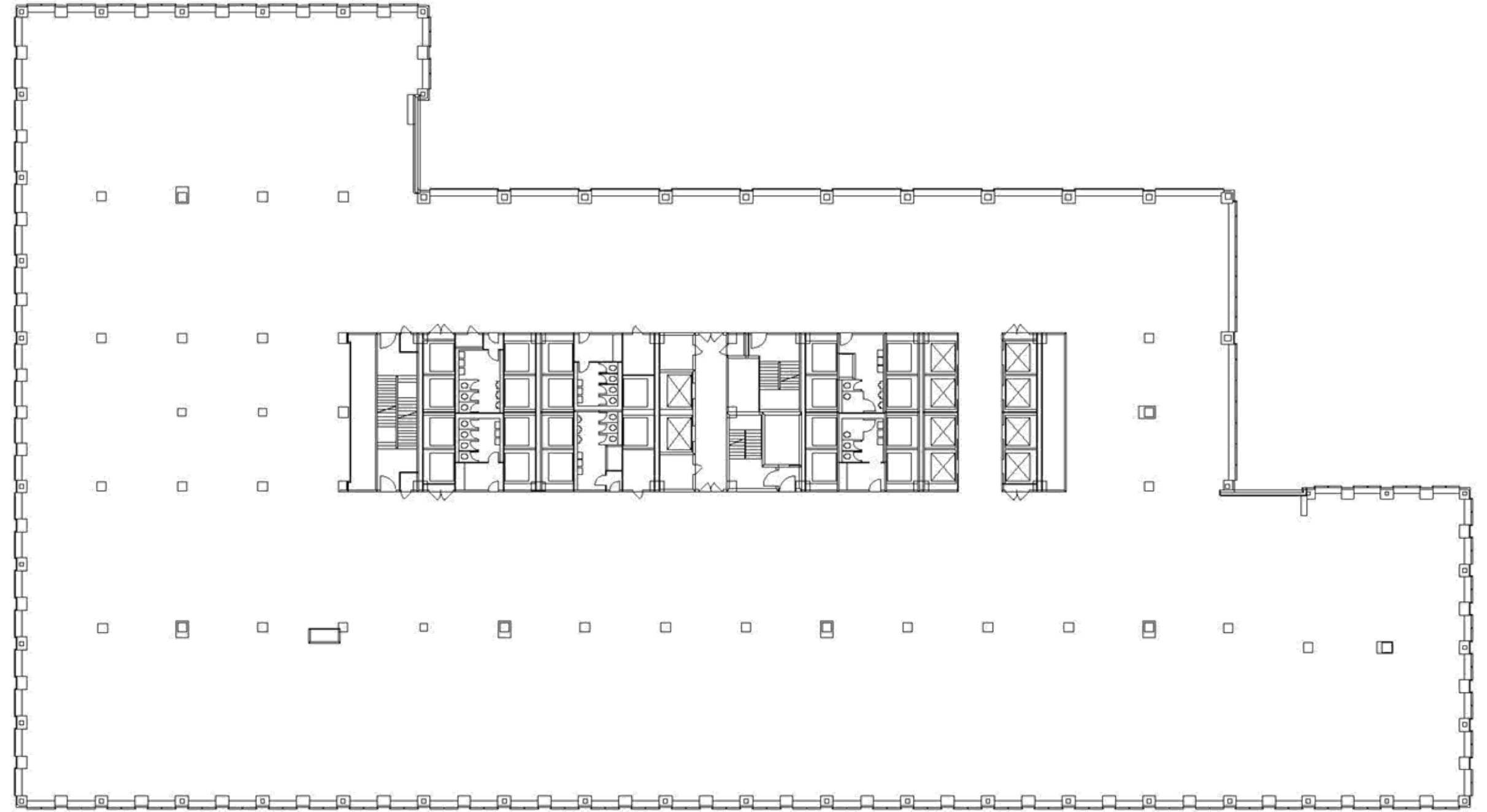
E13: 36,253 RSF

E4: 70,400 RSF
E2: 70,353 RSF



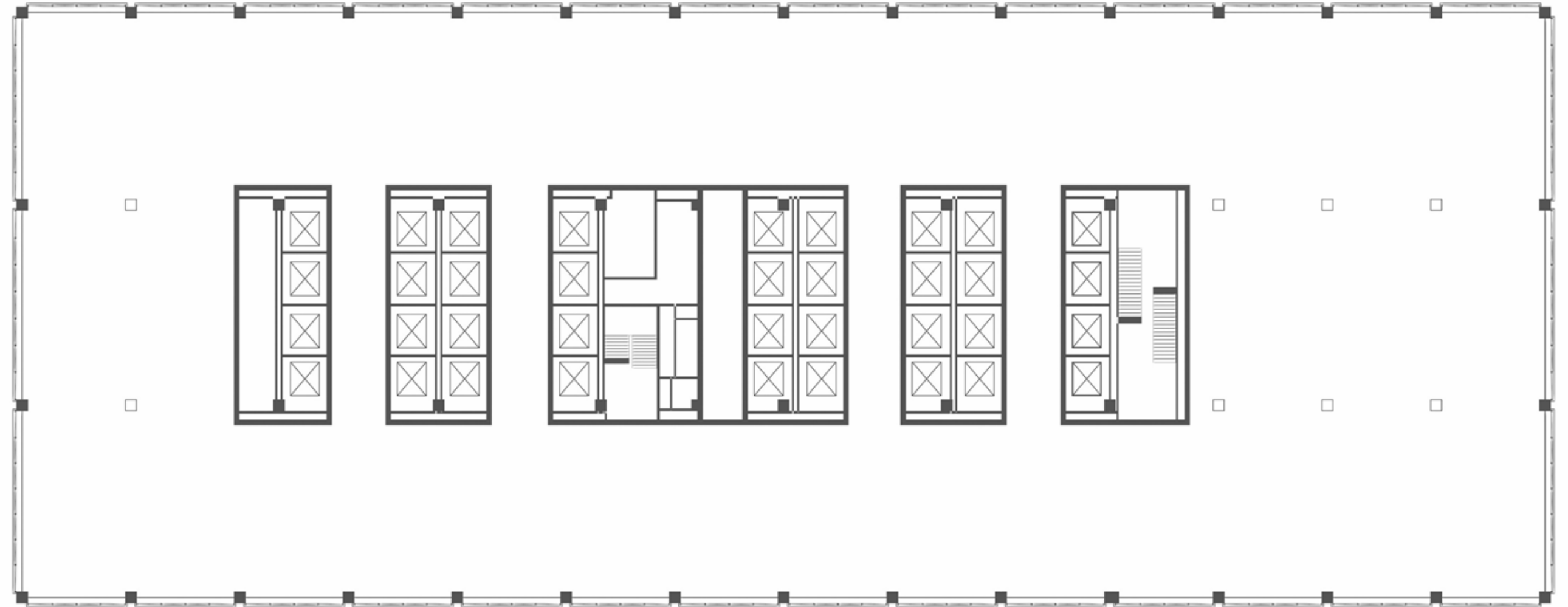
Typical Base Floorplan

Floor 4
70,400 RSF



Typical Tower Floorplan

Floors 22-23
37,913 RSF



Planned Amenity Offerings



Fine dining

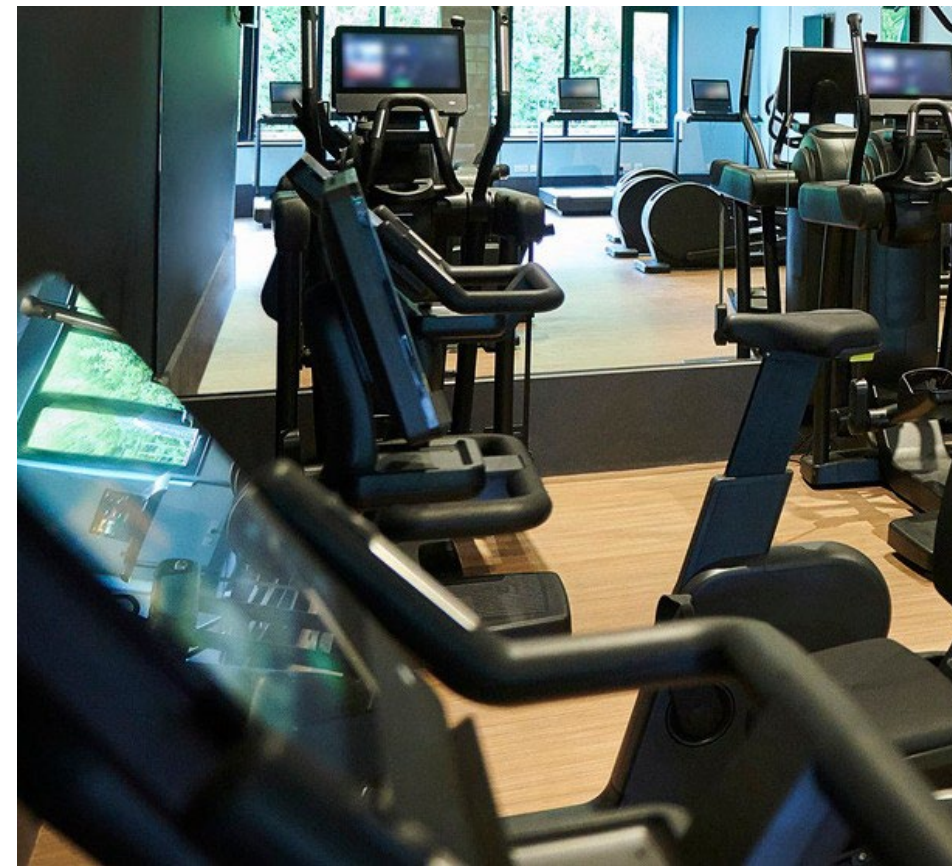


Versatile lounge and meeting experience



Health and fitness

Thoughtfully planned amenity offerings on the Lexington and Park Avenue levels will provide a superior employee experience with spaces for collaboration, multiple food and beverage options, a health and wellness facility, and a fitness center.



Fitness center



Food hall

Fine Dining





An all-day dining and meeting space is planned at 345 Park Avenue. The versatile space will accommodate daily breakfast or lunch meetings, after work entertainment and larger company functions.





Jack Rudin
Way
East 51st St

Blackstone

Connect to Anywhere

Subway:



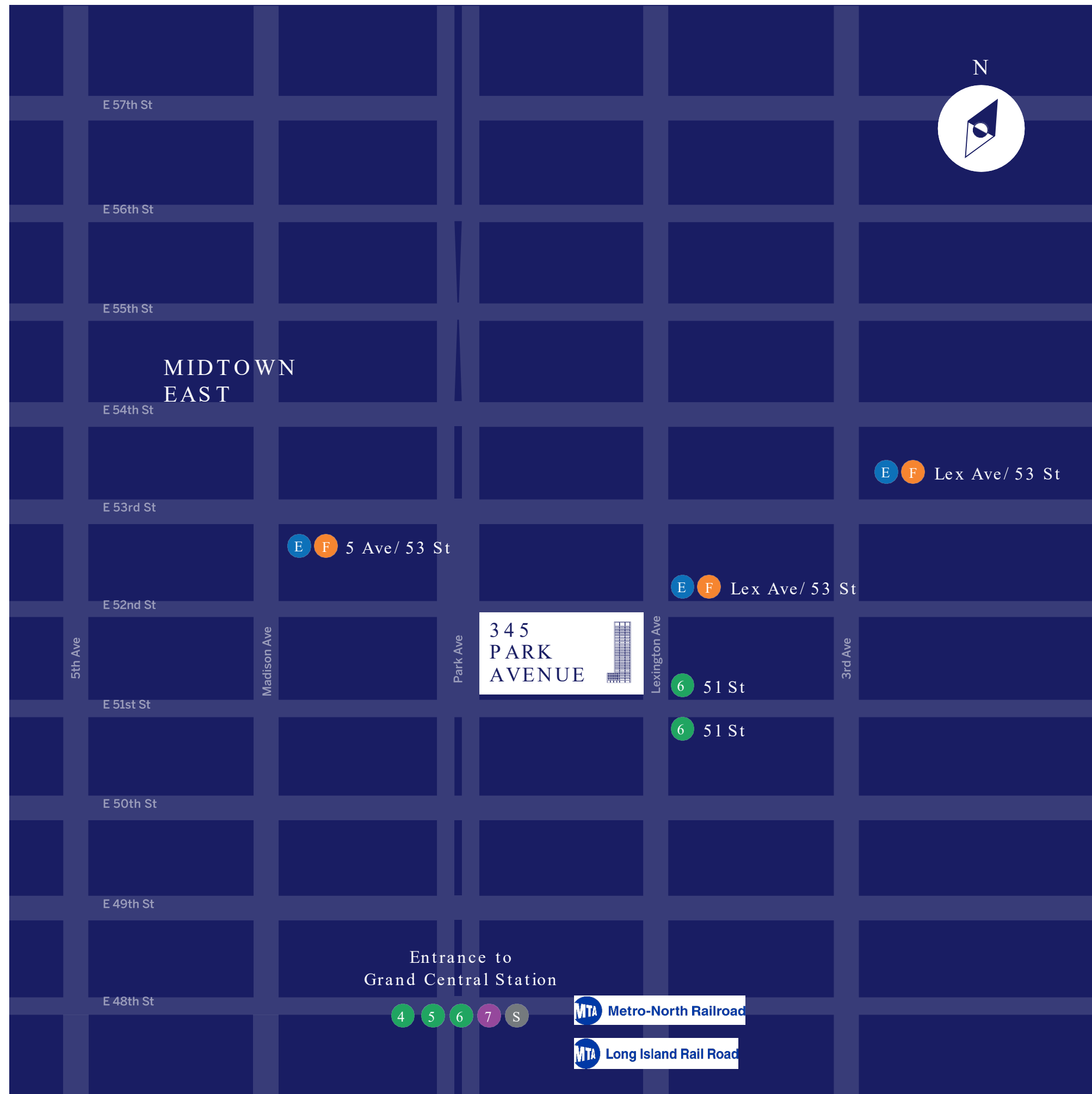
Lex Ave/53 St	1 min walk
5 Ave/53 St.	3 min walk
Grand Central	7 min walk

Bus:

BM2 / BXM1 / M103 / M42
M5 / QM32 / QM40 / QM42
and many more

Trains:

MetroNorth, LIRR



Neighborhood Attractions

 Restaurants

 Bars

 Hotels

 Shopping

 Sightseeing



About Rudin

The Rudin family controls one of the largest privately owned real estate companies in New York City. Founded in 1925 by Samuel Rudin and his siblings, and now led by the third and fourth generations, Rudin has a multigenerational commitment to excellence and integrity. This commitment extends to our tenants, our employees, our partners, and our city.

Rudin has a proven track record of renewing and reinvesting in our best-in-class properties while providing superior customer service and forging long-term relationships with its clients.

Rudín

We look
forward to
welcoming
you to 345
Park Avenue

For more information,
please contact or visit:

Tom Keating
212-407-2481
tkeating@rudin.com

rudin.com