



South Park Shopping Center

TOTAL VISITORS
46.6K
(12 MONTHS)

OVERVIEW

206 E. McIntyre Street (US HWY 76)
Mullins, SC 29574

For Lease
Type: Retail
Total SF: 60,874

US Highway 76 serves as a vital transportation route connecting Florence, SC to eastern North Carolina, making it a bustling hub of activity. The shopping center not only caters to the local residents in the surrounding neighborhoods but also attracts shoppers from the rural areas outside of Mullins. With the renowned Piggly Wiggly as its anchor, this center has experienced a continuous surge in foot traffic over the past year.

RETAILERS INCLUDE



LEASING ASSOCIATE

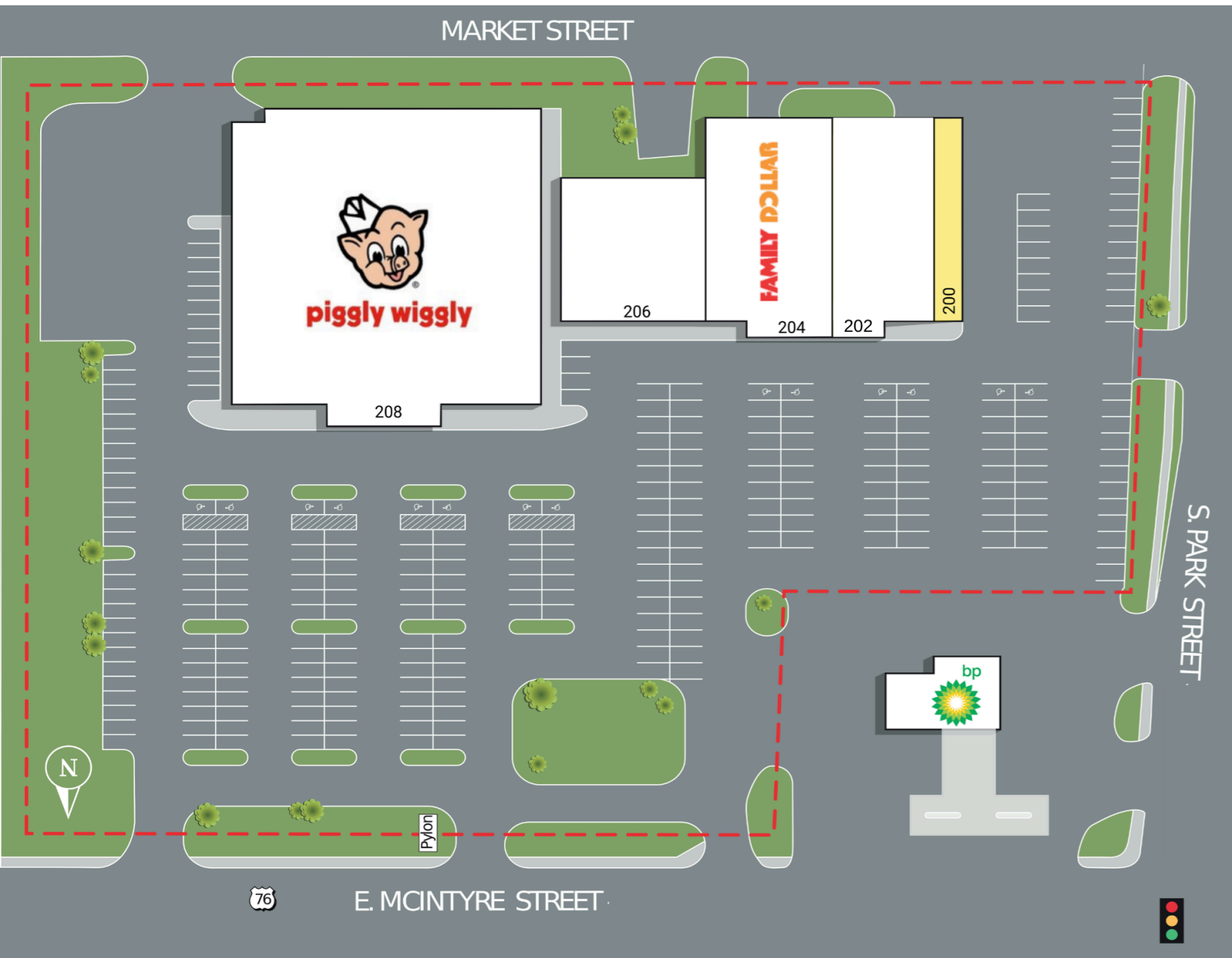


Kevin Conway
Sr. Leasing Manager
(757) 618-2932
kconway@whlr.us

DEMOGRAPHICS	3 MILES	5 MILES	10 MILES
POPULATION	8,680	10,303	28,307
HOUSEHOLDS	3,147	3,813	10,572
AVG. HH INCOME (\$)	\$50,286	\$50,023	\$50,160
MEDIAN AGE	38	41	40

South Park

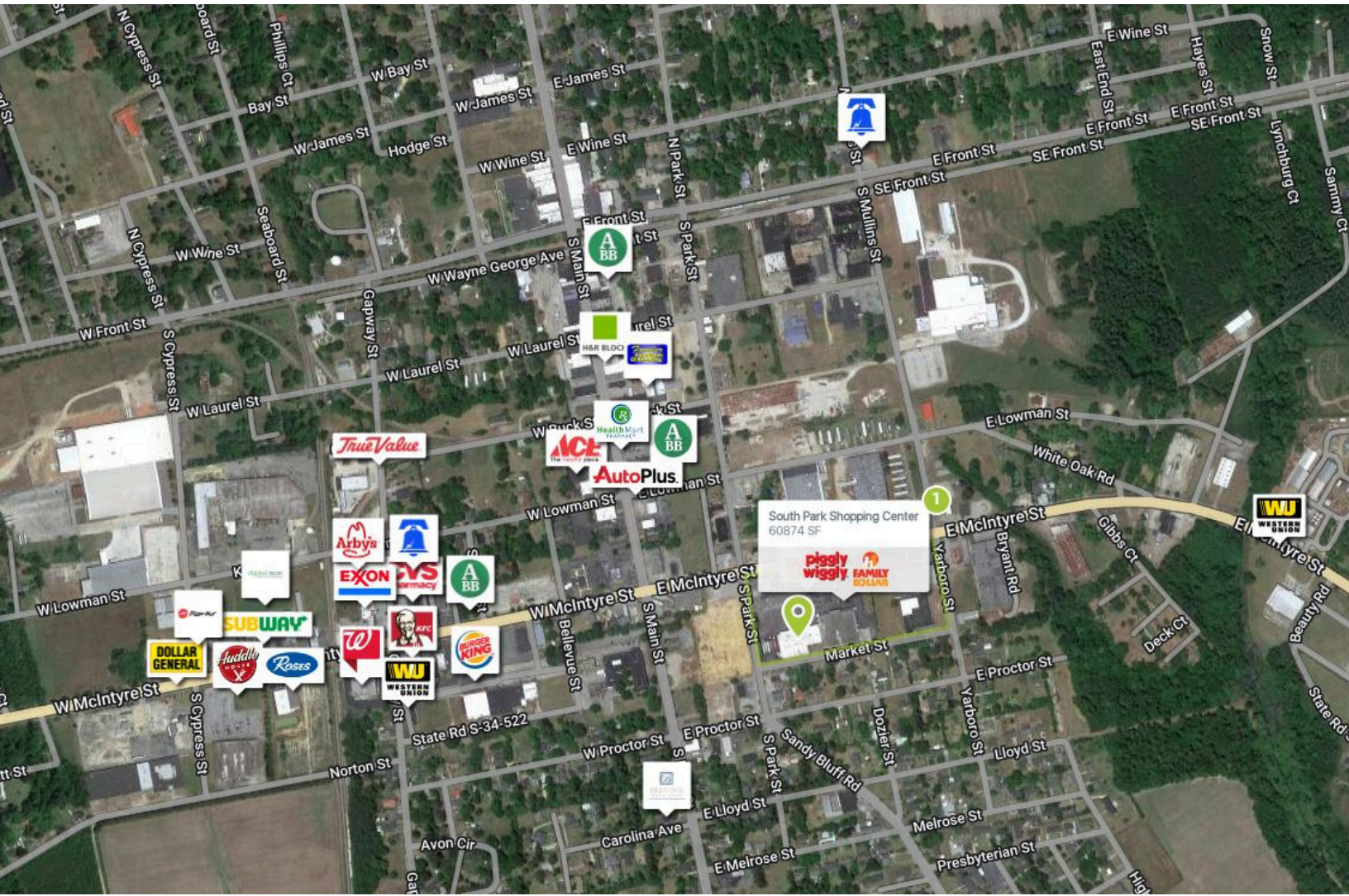
206 E. McIntyre Street (US HWY 76)
Mullins, SC 29574



SUITE	TENANTS	S.F.
208	Piggly Wiggly	33,218
206	Papa's Pickins	7,291
204	Family Dollar	10,000
202	Papa's Pickins	8,325
200	AVAILABLE	1,900

South Park

206 E. McIntyre Street (US HWY 76)
Mullins, SC 29574



AADT: 6,654 (E. McIntyre Street)

Avg. Hourly Traffic: 329 (E. McIntyre Street)

DISCLAIMER

The information contained herein has been obtained from sources we believe to be reliable; however, we have not investigated nor verified any information and make no guarantee, warranty or representation to the accuracy or completeness of information. By accepting this Marketing Brochure, you agree to release Wheeler Real Estate Company and WHLR and hold it harmless from any kind of claim, cost, expense, or liability arising out of your investigation and/or lease of this property. This Marketing Brochure and offering is subject to correction or errors and omissions, change of price, prior to sale/lease or withdrawal from the market, without notice.

WHLR

WHEELER REAL ESTATE COMPANY
a subsidiary of Wheeler Real Estate Investment Trust

2529 VIRGINIA BEACH BLVD., VIRGINIA BEACH, VA 23452 | P: (757) 627-9088 | WHLR.US