



COMMERCIAL SITE FOR SALE

22 Washington Street, Brainerd, MN 56401

C|C CLOSE CONVERSE
Commercial Real Estate | Business Brokerage

521 Charles Street, PO Box 327, Brainerd, MN 56401 | 218-828-3334 | www.closeconverse.com

Table of Contents

Page

3-4	Features
5	Floor Plan
6-11	Photos
12	Aerial Photo
13	Section Aerial
14	Section Map
15	Zoning Map
16	Traffic Counts
17	Location Map
18-19	Demographics
20	Thank You
21	Agency Disclosure
22	Contact

22 Washington Street, Brainerd, MN

Features

Commercial Site on High-Traffic Corner.

Exceptional opportunity to secure a highly visible, high-traffic corner lot along the busy Washington Street corridor in Brainerd. This premier commercial site offers outstanding exposure and accessibility—an ideal location for redevelopment or repositioning. The property currently features a former car dealership building with showroom space, offices, multiple shops with drive-in doors, and ample storage, providing immediate utility or a strong foundation for future development. Don't miss your chance to capitalize on one of Brainerd's most strategic commercial locations.



Address:	22 Washington Street (Hwy 210) Brainerd, MN 56401	
Directions:	From Hwy 210 (Washington Street) / Hwy 371 (S 6th Street) intersection in Brainerd - West on Washington Street 5 blocks - Property is the SW corner of Washington Street and N 1st Street	
Lot Size:	0.68 Acres (29,871 sq. ft.)	
Lot Dimensions:	206' x 145'	
Frontage:	206' on Washington Street and 145' on N 1st Street	
Building Size:	12,788 sq. ft.	
PRICE REDUCED:	\$499,000	\$449,000
2025 Real Estate Taxes:	\$6,528	
Water & Sewer:	City	
Heating:	Boiler & Natural Gas Ceiling Heaters (Boiler System New in 2024)	

Continued on next page.

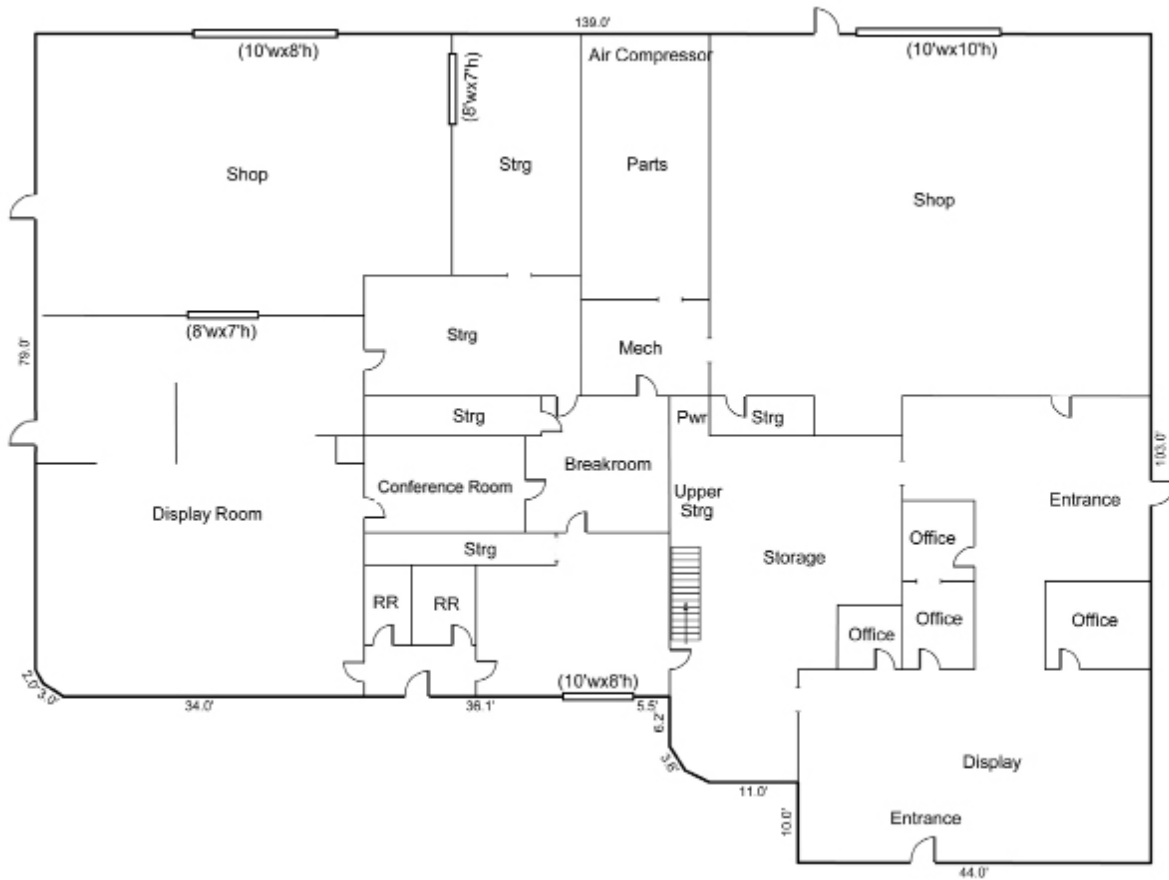
Close Converse: The above information has been obtained from the property owner or other sources that we deem reliable, however, neither the owner nor Close Converse guarantees the accuracy of such information. No part of this information may be reproduced, adapted, or transmitted without the prior written consent of Close Converse.

521 Charles Street, PO Box 327, Brainerd, MN 56401 | 218-828-3334 | www.closeconverse.com

Cooling:	Roof-Top Units
Electric:	200 Amp, Three Phase
Lighting:	Fluorescent
Year Built:	1936
Construction:	Concrete Block
Foundation:	Concrete Block
Roof:	Flat - Rubber Membrane
Exterior:	Stucco & Concrete Block
Ceiling Height:	Office Area: 8' Shops: 14'
Overhead Doors:	1 (10'W x 10'H) Exterior 2 (10'W x 8'H) Exterior 2 (8'W x 7'H) Interior
Bathrooms:	2
Floor Drains:	Yes (In Shops)
Parking:	35+ Paved Parking Spaces
Zoning:	CC - Commercial Corridor
PID#:	41251117
Legal Description:	Pt of Lot 1 desc; beg at NE cor of Lot 1 then S 145 ft then W 206 ft then N to N line of Lot 1 then E to POB, Auditors Plat of Unplatted Portions Sec
Neighboring Businesses:	Located close to downtown Brainerd, nearby businesses include Bohman Chiropractic, United Partnership Co., Harmony Massage, The Studio, Dairy Queen, Vapor North, Legend Outdoors, Greenheck Auto Glass, Hardees, Thrifty White Drug, Allegra, Brainerd Floral, Cenex, Brainerd Chamber, Ace Hardware, Caribbean Beach Tan, Brainerd Medical Supply, Walgreens plus numerous others.

Close Converse: The above information has been obtained from the property owner or other sources that we deem reliable, however, neither the owner nor Close Converse guarantees the accuracy of such information. No part of this information may be reproduced, adapted, or transmitted without the prior written consent of Close Converse.

Floor Plan



Close Converse: The above information has been obtained from the property owner or other sources that we deem reliable, however, neither the owner nor Close Converse guarantees the accuracy of such information. No part of this information may be reproduced, adapted, or transmitted without the prior written consent of Close Converse.

22 Washington Street, Brainerd, MN

Photos



Commercial Site



Commercial Site



Subject Building - North Side



Subject Building - West Side



Subject Building - South Side



Subject Building - South Side

Close Converse: The above information has been obtained from the property owner or other sources that we deem reliable, however, neither the owner nor Close Converse guarantees the accuracy of such information. No part of this information may be reproduced, adapted, or transmitted without the prior written consent of Close Converse.

521 Charles Street, PO Box 327, Brainerd, MN 56401 | 218-828-3334 | www.closeconverse.com

22 Washington Street, Brainerd, MN

Photos



West Display Room



West Display Room



Office



Office



Office



West Work Area

Close Converse: The above information has been obtained from the property owner or other sources that we deem reliable, however, neither the owner nor Close Converse guarantees the accuracy of such information. No part of this information may be reproduced, adapted, or transmitted without the prior written consent of Close Converse.

521 Charles Street, PO Box 327, Brainerd, MN 56401 | 218-828-3334 | www.closeconverse.com



West Work Area



West Storage



West Storage



Breakroom



Breakroom



Conference Room



North Drive-In Door Area



North Drive-In Door Area



North Entrance



Restroom



East Display Room



East Display Room

Close Converse: The above information has been obtained from the property owner or other sources that we deem reliable, however, neither the owner nor Close Converse guarantees the accuracy of such information. No part of this information may be reproduced, adapted, or transmitted without the prior written consent of Close Converse.



East Display Room



East Display Room



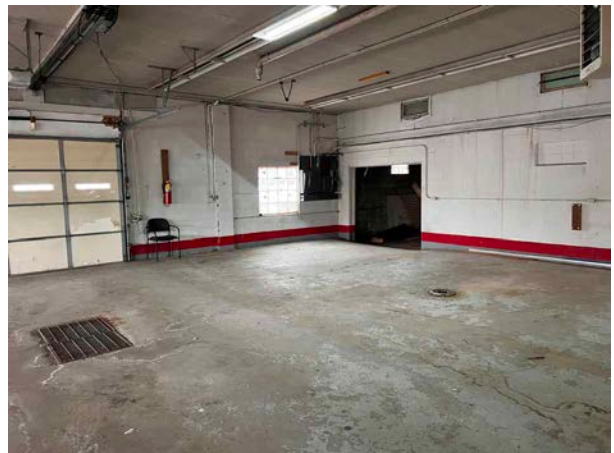
East Display Room



Central Storage Area



East Shop Space



East Shop Space

Close Converse: The above information has been obtained from the property owner or other sources that we deem reliable, however, neither the owner nor Close Converse guarantees the accuracy of such information. No part of this information may be reproduced, adapted, or transmitted without the prior written consent of Close Converse.



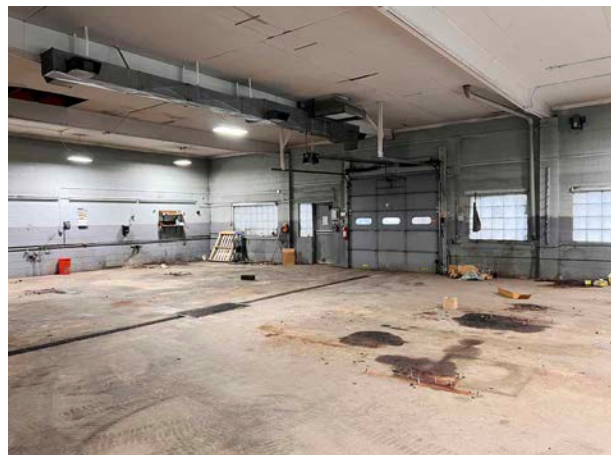
South Storage Area



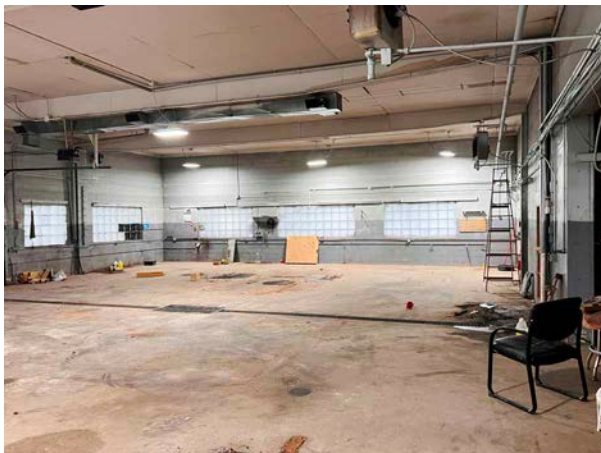
South Storage Area



Parts Room



West Shop Space



West Shop Space



West Shop Space

Close Converse: The above information has been obtained from the property owner or other sources that we deem reliable, however, neither the owner nor Close Converse guarantees the accuracy of such information. No part of this information may be reproduced, adapted, or transmitted without the prior written consent of Close Converse.

22 Washington Street, Brainerd, MN

Aerial Photo

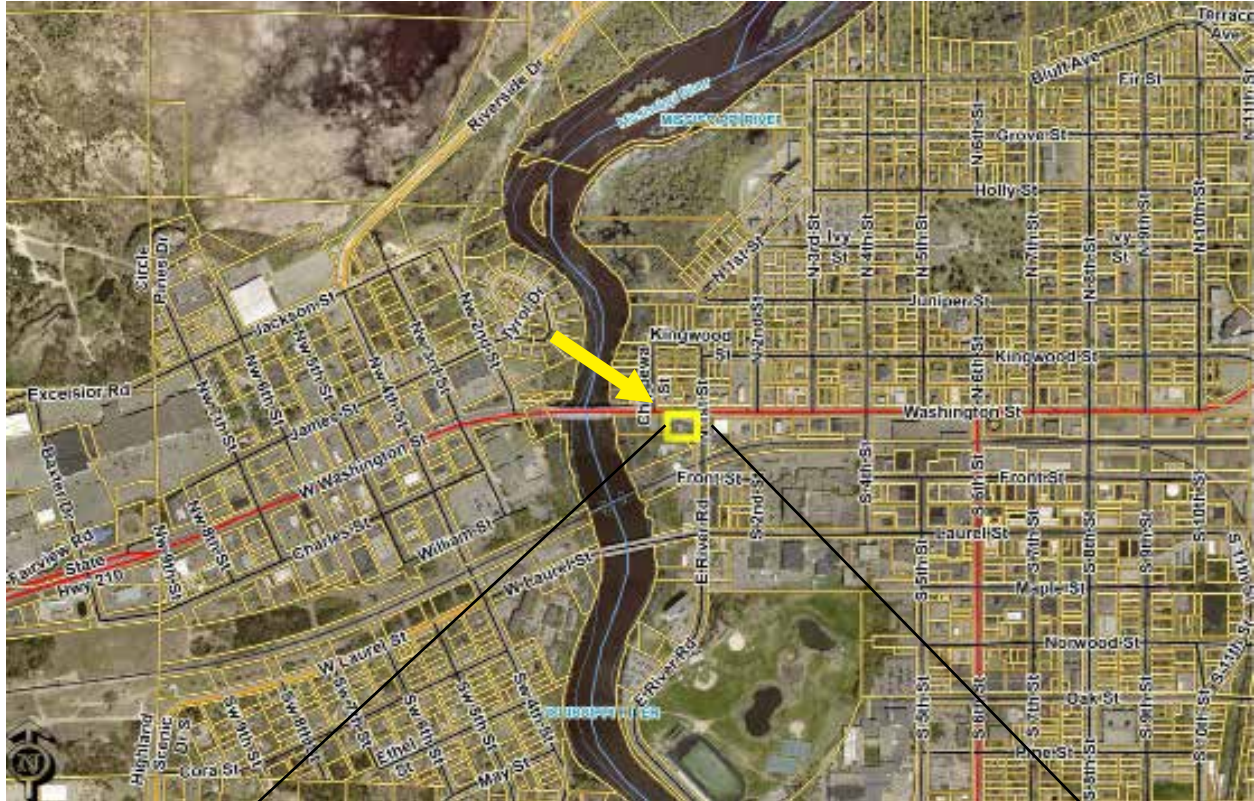


Close Converse: The above information has been obtained from the property owner or other sources that we deem reliable, however, neither the owner nor Close Converse guarantees the accuracy of such information. No part of this information may be reproduced, adapted, or transmitted without the prior written consent of Close Converse.

521 Charles Street, PO Box 327, Brainerd, MN 56401 | 218-828-3334 | www.closeconverse.com

22 Washington Street, Brainerd, MN

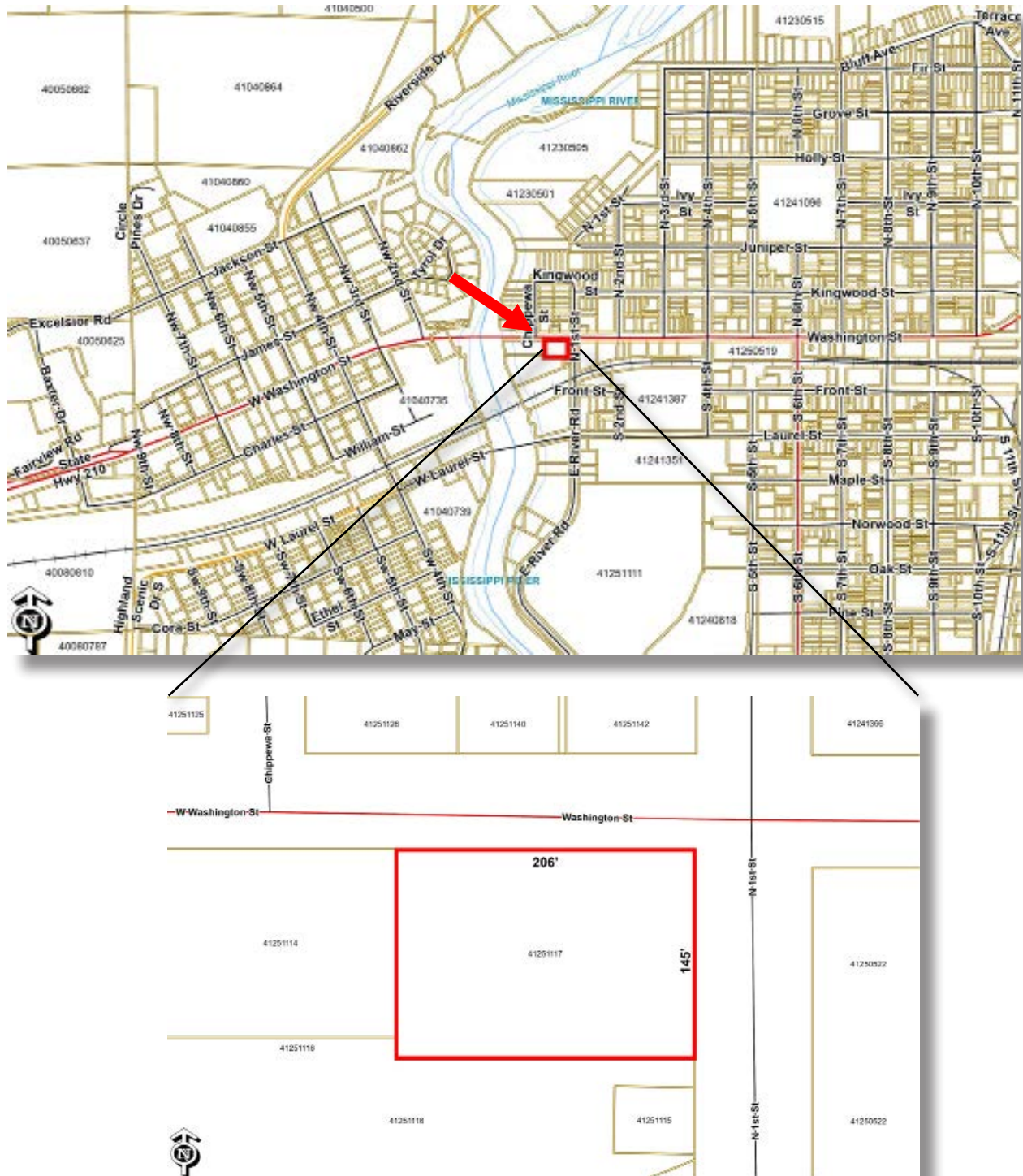
Section Aerial



Close Converse: The above information has been obtained from the property owner or other sources that we deem reliable, however, neither the owner nor Close Converse guarantees the accuracy of such information. No part of this information may be reproduced, adapted, or transmitted without the prior written consent of Close Converse.

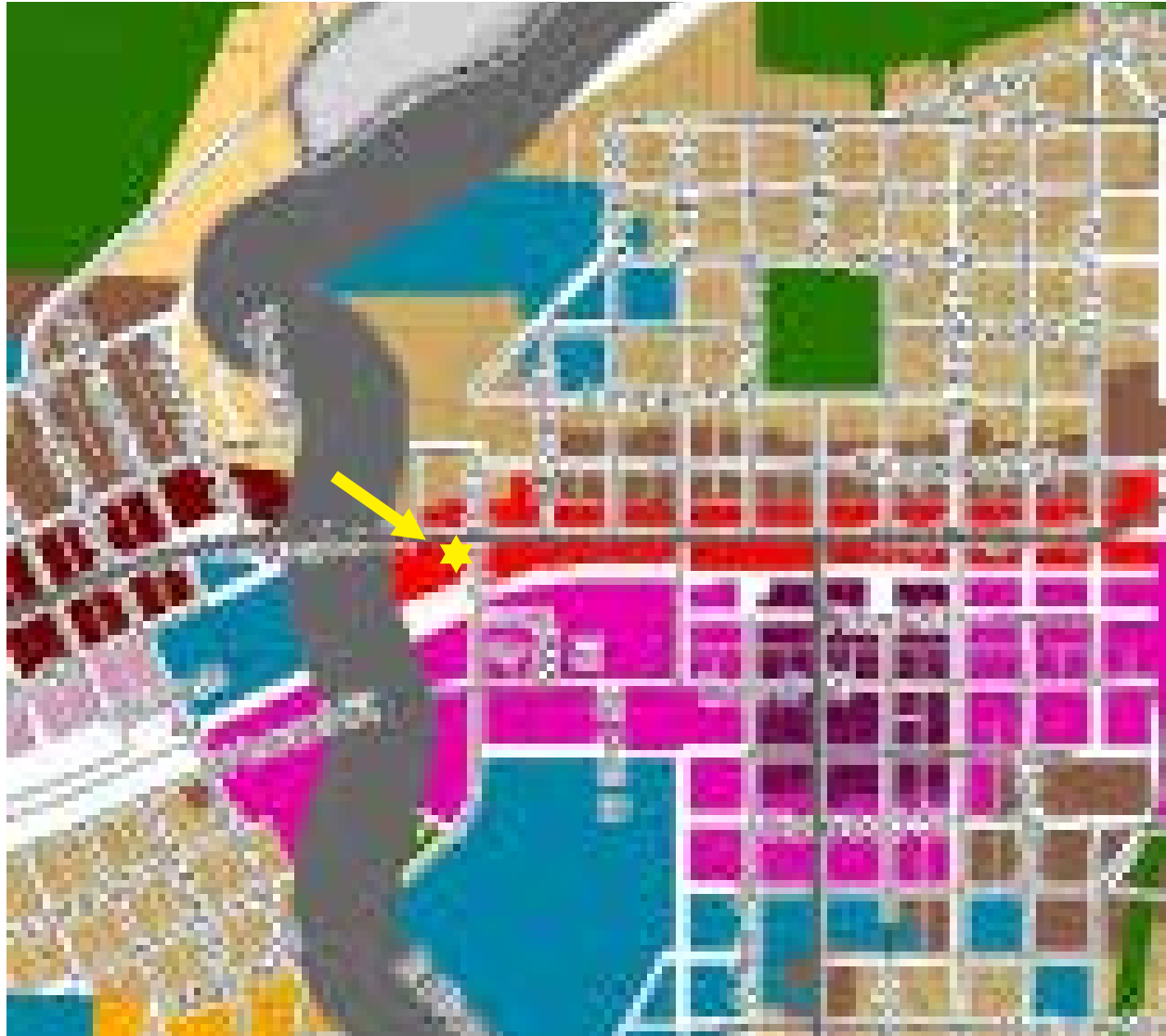
521 Charles Street, PO Box 327, Brainerd, MN 56401 | 218-828-3334 | www.closeconverse.com

Section Map



Close Converse: The above information has been obtained from the property owner or other sources that we deem reliable, however, neither the owner nor Close Converse guarantees the accuracy of such information. No part of this information may be reproduced, adapted, or transmitted without the prior written consent of Close Converse.

CC - Commercial Corridor



Zoning Districts

- Rural Living 1 (RL-1)
- Rural Living 2 (RL-2)
- Garden Living (GL)
- Contemporary Neighborhood 1 (CN-1)
- Contemporary Neighborhood 2 (CN-2)

- General Commercial (GC)
- Commercial Corridor (CC)
- Traditional Neighborhood 1 (TN-1)
- Traditional Neighborhood 2 (TN-2)
- Town Center (TC)

- Main Street (MS)
- Makers and Employment (ME)
- General Industrial (GI)
- Public/Semi-Public (PSP)
- Park (P)

Overlay

- Brook Street Industrial Overlay (BSI-O)
- Manufactured Housing Overlay (MH-O)
- Northern Pacific Center Overlay (PUD)

Close Converse: The above information has been obtained from the property owner or other sources that we deem reliable, however, neither the owner nor Close Converse guarantees the accuracy of such information. No part of this information may be reproduced, adapted, or transmitted without the prior written consent of Close Converse.

Traffic Counts

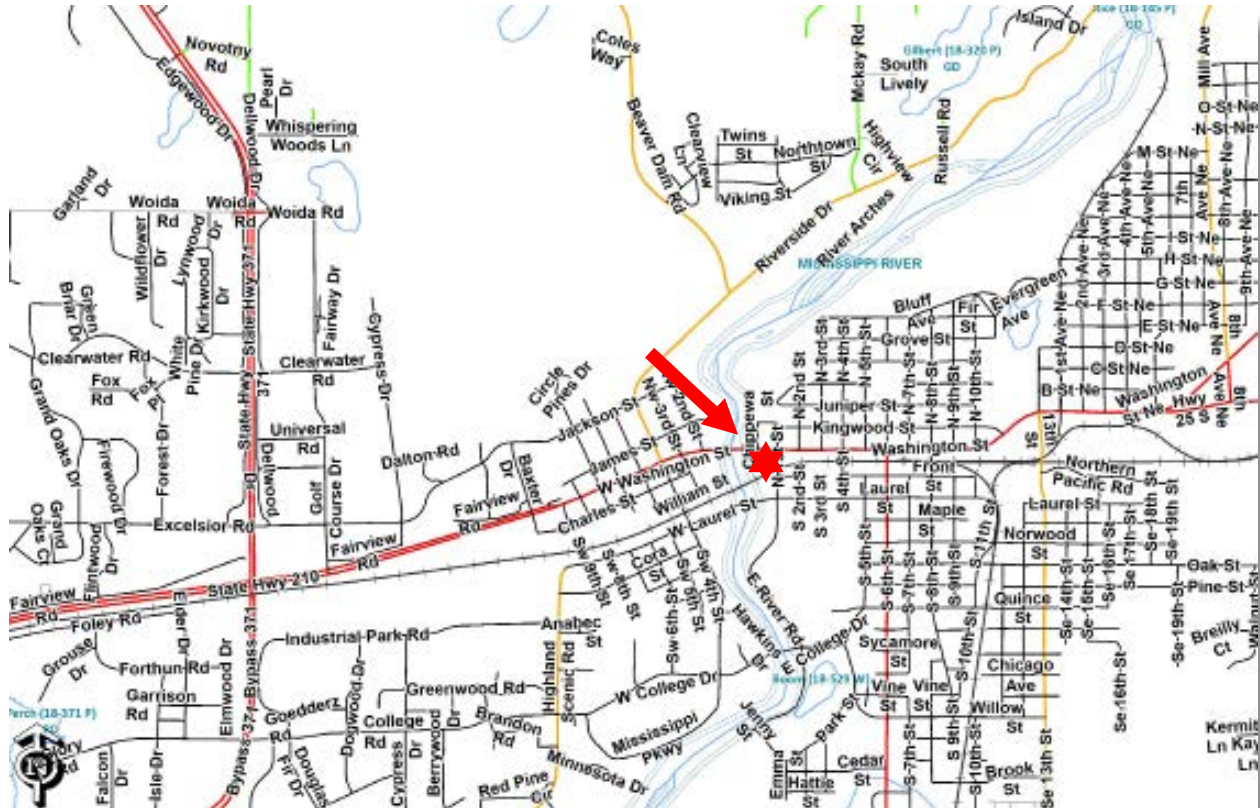
The map displays the Crow Wing County area, including the Mississippi River and various roads. A red arrow points to a specific location marked with a red star and labeled 'SEQ 28278' and 'Daily Quest'. Other locations marked with red dots and labeled with SEQ numbers and years include:

- SEQ 14104
- SEQ 33619
- SEQ 33640
- SEQ 25284
- SEQ 25282
- SEQ 25281
- SEQ 25280
- SEQ 25279
- SEQ 25278
- SEQ 25277
- SEQ 25276
- SEQ 25275
- SEQ 25274
- SEQ 25273
- SEQ 25272
- SEQ 25271
- SEQ 25270
- SEQ 25269
- SEQ 25268
- SEQ 25267
- SEQ 25266
- SEQ 25265
- SEQ 25264
- SEQ 25263
- SEQ 25262
- SEQ 25261
- SEQ 25260
- SEQ 25259
- SEQ 25258
- SEQ 25257
- SEQ 25256
- SEQ 25255
- SEQ 25254
- SEQ 25253
- SEQ 25252
- SEQ 25251
- SEQ 25250
- SEQ 25249
- SEQ 25248
- SEQ 25247
- SEQ 25246
- SEQ 25245
- SEQ 25244
- SEQ 25243
- SEQ 25242
- SEQ 25241
- SEQ 25240
- SEQ 25239
- SEQ 25238
- SEQ 25237
- SEQ 25236
- SEQ 25235
- SEQ 25234
- SEQ 25233
- SEQ 25232
- SEQ 25231
- SEQ 25230
- SEQ 25229
- SEQ 25228
- SEQ 25227
- SEQ 25226
- SEQ 25225
- SEQ 25224
- SEQ 25223
- SEQ 25222
- SEQ 25221
- SEQ 25220
- SEQ 25219
- SEQ 25218
- SEQ 25217
- SEQ 25216
- SEQ 25215
- SEQ 25214
- SEQ 25213
- SEQ 25212
- SEQ 25211
- SEQ 25210
- SEQ 25209
- SEQ 25208
- SEQ 25207
- SEQ 25206
- SEQ 25205
- SEQ 25204
- SEQ 25203
- SEQ 25202
- SEQ 25201
- SEQ 25200
- SEQ 25199
- SEQ 25198
- SEQ 25197
- SEQ 25196
- SEQ 25195
- SEQ 25194
- SEQ 25193
- SEQ 25192
- SEQ 25191
- SEQ 25190
- SEQ 25189
- SEQ 25188
- SEQ 25187
- SEQ 25186
- SEQ 25185
- SEQ 25184
- SEQ 25183
- SEQ 25182
- SEQ 25181
- SEQ 25180
- SEQ 25179
- SEQ 25178
- SEQ 25177
- SEQ 25176
- SEQ 25175
- SEQ 25174
- SEQ 25173
- SEQ 25172
- SEQ 25171
- SEQ 25170
- SEQ 25169
- SEQ 25168
- SEQ 25167
- SEQ 25166
- SEQ 25165
- SEQ 25164
- SEQ 25163
- SEQ 25162
- SEQ 25161
- SEQ 25160
- SEQ 25159
- SEQ 25158
- SEQ 25157
- SEQ 25156
- SEQ 25155
- SEQ 25154
- SEQ 25153
- SEQ 25152
- SEQ 25151
- SEQ 25150
- SEQ 25149
- SEQ 25148
- SEQ 25147
- SEQ 25146
- SEQ 25145
- SEQ 25144
- SEQ 25143
- SEQ 25142
- SEQ 25141
- SEQ 25140
- SEQ 25139
- SEQ 25138
- SEQ 25137
- SEQ 25136
- SEQ 25135
- SEQ 25134
- SEQ 25133
- SEQ 25132
- SEQ 25131
- SEQ 25130
- SEQ 25129
- SEQ 25128
- SEQ 25127
- SEQ 25126
- SEQ 25125
- SEQ 25124
- SEQ 25123
- SEQ 25122
- SEQ 25121
- SEQ 25120
- SEQ 25119
- SEQ 25118
- SEQ 25117
- SEQ 25116
- SEQ 25115
- SEQ 25114
- SEQ 25113
- SEQ 25112
- SEQ 25111
- SEQ 25110
- SEQ 25109
- SEQ 25108
- SEQ 25107
- SEQ 25106
- SEQ 25105
- SEQ 25104
- SEQ 25103
- SEQ 25102
- SEQ 25101
- SEQ 25100
- SEQ 25099
- SEQ 25098
- SEQ 25097
- SEQ 25096
- SEQ 25095
- SEQ 25094
- SEQ 25093
- SEQ 25092
- SEQ 25091
- SEQ 25090
- SEQ 25089
- SEQ 25088
- SEQ 25087
- SEQ 25086
- SEQ 25085
- SEQ 25084
- SEQ 25083
- SEQ 25082
- SEQ 25081
- SEQ 25080
- SEQ 25079
- SEQ 25078
- SEQ 25077
- SEQ 25076
- SEQ 25075
- SEQ 25074
- SEQ 25073
- SEQ 25072
- SEQ 25071
- SEQ 25070
- SEQ 25069
- SEQ 25068
- SEQ 25067
- SEQ 25066
- SEQ 25065
- SEQ 25064
- SEQ 25063
- SEQ 25062
- SEQ 25061
- SEQ 25060
- SEQ 25059
- SEQ 25058
- SEQ 25057
- SEQ 25056
- SEQ 25055
- SEQ 25054
- SEQ 25053
- SEQ 25052
- SEQ 25051
- SEQ 25050
- SEQ 25049
- SEQ 25048
- SEQ 25047
- SEQ 25046
- SEQ 25045
- SEQ 25044
- SEQ 25043
- SEQ 25042
- SEQ 25041
- SEQ 25040
- SEQ 25039
- SEQ 25038
- SEQ 25037
- SEQ 25036
- SEQ 25035
- SEQ 25034
- SEQ 25033
- SEQ 25032
- SEQ 25031
- SEQ 25030
- SEQ 25029
- SEQ 25028
- SEQ 25027
- SEQ 25026
- SEQ 25025
- SEQ 25024
- SEQ 25023
- SEQ 25022
- SEQ 25021
- SEQ 25020
- SEQ 25019
- SEQ 25018
- SEQ 25017
- SEQ 25016
- SEQ 25015
- SEQ 25014
- SEQ 25013
- SEQ 25012
- SEQ 25011
- SEQ 25010
- SEQ 25009
- SEQ 25008
- SEQ 25007
- SEQ 25006
- SEQ 25005
- SEQ 25004
- SEQ 25003
- SEQ 25002
- SEQ 25001
- SEQ 25000



16

Location Map



Close Converse: The above information has been obtained from the property owner or other sources that we deem reliable, however, neither the owner nor Close Converse guarantees the accuracy of such information. No part of this information may be reproduced, adapted, or transmitted without the prior written consent of Close Converse.

Trade Area 2024 Population (Includes the following counties):

Crow Wing County	68,541
Cass County	31,282
Total Trade Area Population	99,823

2024 Population:

Brainerd	31,866
Baxter	9,043

Estimated Summer Population:

Brainerd/Baxter	200,000+
-----------------	----------

Projected Population Growth Change 2024-2029:

Crow Wing County	0.52%
Brainerd	0.38%
Baxter	1.38%

Households in 2024:

Crow Wing County	29,089
Brainerd	13,109
Baxter	3,643

2024 Median Household Income:

Crow Wing County	\$74,012
Brainerd	\$68,083
Baxter	\$76,101

Leading Employers in Crow Wing County in 2025:

Essentia Health
Cuyuna Regional Medical Center
Brainerd School District
Grandview Lodge
Breezy Point Resort
Ascensus
Clow Stamping
Crow Wing County
Madden's Resort
Cragun's Resort
Walmart
Ruttgers Bay Lake Resort
Cub Foods/Super Valu (3 Stores)
Central lakes College
Anderson Brothers Construction
Pequot Lakes School District
Mills Automotive
Bang Printing
City of Brainerd
Costco
Bethany Good Samaritan
Woodland Good Samaritan
Crosby Ironton School District
Minnesota Care

Leading Employers Cont.:

Landis + Gyr
Northstar Plating
Nortech Systems
Lindar
Avantech
Reichert Bus
Lexington
Growth Zone
CTC
Stern Companies
MNDOT
MNDNR
TDS
Graphic Packaging
Crow Wing Power

Continued on next page.

Demographics

Brainerd Lakes Area Businesses: (To see a list of additional businesses, please go to www.explorebrainerdlakes.com)

Financial Institutions: 16+
(multiple locations not counted)

Churches: 30+
Schools: 15+
Golf Courses: 27+

Resorts:
Birch Bay
Boyd Lodge
Breezy Point Resort
Craguns
Fritz's Resort
Grand View Lodge
Gull Lake Resort
Kavanaugh's
Lost Lake Lodge
Maddens
Manhattan Beach Lodge
Quarterdeck
Ruttger's Bay Lake Lodge
Sullivans
Plus numerous others

Major Retailers:
Aldi
Anytime Fitness
Ashley Furniture
Auto Zone
Best Buy
Brother's Motorsports
Cashwise Liquor (2)
Christmas Point
Costco
Cub Foods (2)
Dick's Sporting Goods
Discount Tire
Dollar Tree (2)
Dollar General
Dondelinger
Dunham's Sports
East Brainerd Mall (17 Retailers)
Family Dollar
Fleet Farm
Harbor Freight
Home Depot
Home Goods
Hobby Lobby
Jiffy Lube

Major Retailers Continued:
Kohl's
Menards
Michaels
PetSmart
Planet Fitness
Super One
Super Wal-Mart
Takedown Gym
Target
The Power Lodge
TJ Maxx
Ulta Beauty
Walgreens
Westgate Mall (27 Retailers)
Westside Liquor

Restaurants/Fast Food:
218 Local
371 Diner
Antler's
Applebee's
Arby's
B-Merri
Baia Della /Prairie Bay
Bar Harbor
Baxter's
Black Bear Lodge & Saloon
Blaze Pizza
Blue Oyster
Boulder Tap House
Breezy Point Marina
Buffalo Wild Wings
Burger King
Burritos California
Caribou Coffee (4)
Char
Chick N Rice
China Garden
Chipotle
Coco Moon
Cold Stone Creamery
Cowboy's
Cragun's Legacy Grill
Cru
Culver's
Dairy Queen (3)
Domino's Pizza (3)
Dough Bros.

Restaurants/Fast Food Continued:
Dunkin Donuts
Dunmire's (2)
El Tequila
Ernie's
Firehouse Subs
Five Guys
Four Seas
Grizzly's Grill & Saloon
Hardee's
Hunt 'N Shack
Ippin Ramen & Sushi
Jack's House
Jersey Mike's
Jimmy John's
KFC
Little Caesar's
Loco Express
Lucky's
Madden's Classic Grill
Manhattan Beach
Maucieri's
McDonalds (2)
Moonlite Bay
Nautical Bowls
Papa Murphy's Pizza
Perkins
Pine Peaks
Pizza Hut
Pizza Ranch
Poncho & Lefty's
Rafferty's Pizza (4)
Riverside Inn
Ruttger's
Sakura
Senor Patron
Sherwood North
Slice on Oak
Starbucks (3)
Subway (4)
Sunshine's Summer House
Taco Bell
Taco John's
The Barn
The Commander
The Pines at Grandview
Wendy's (2)
Ye Ole Wharf
Zorbaz (2)

Close Converse: The above information has been obtained from the property owner or other sources that we deem reliable, however, neither the owner nor Close Converse guarantees the accuracy of such information. No part of this information may be reproduced, adapted, or transmitted without the prior written consent of Close Converse.

22 Washington Street, Brainerd, MN

Thank You

Thank you for considering this Close - Converse opportunity

Close - Converse is pleased to present this real estate opportunity for your review. It is our intention to provide you with the breadth of information and data that will allow you to make an informed decision.

We are here to help

Please review this package and contact us with any questions you may have. We are prepared to discuss how this property meets your needs and desires. Facts, figures and background information will aid in your decision. Should you need specialized counsel in the areas of taxation, law, finance, or other areas of professional expertise, we will be happy to work with your advisor or, we can recommend competent professionals.

How to acquire this opportunity

When you have made a decision to move forward, we can help structure a proposal that covers all the complexities of a commercial real estate transaction. As seller's representatives, we know the seller's specific needs and can tailor a proposal that expresses your desires, provides appropriate contingencies for due diligence and results in a win-win transaction for all parties.

Agency and you

Generally, we are retained by sellers or landlords to represent them in the packaging and marketing of their commercial, investment or development real estate. You are encouraged to review the Minnesota disclosure form "Agency Relationships in Real Estate Transactions" which is enclosed at the end of this package. If you have questions about agency and how it relates to your search for the right property, please ask us. We will answer all your questions and review the alternatives.

Should you wish to pursue this opportunity, please acknowledge your review of "Agency Relationships" by signing, dating and returning it to us.

Close Converse: The above information has been obtained from the property owner or other sources that we deem reliable, however, neither the owner nor Close Converse guarantees the accuracy of such information. No part of this information may be reproduced, adapted, or transmitted without the prior written consent of Close Converse.

521 Charles Street, PO Box 327, Brainerd, MN 56401 | 218-828-3334 | www.closeconverse.com

Agency Disclosure

AGENCY RELATIONSHIPS IN REAL ESTATE TRANSACTIONS

1. Page 1

2. **MINNESOTA LAW REQUIRES** that early in any relationship, real estate brokers or salespersons discuss with
3. consumers what type of agency representation or relationship they desire.⁽¹⁾ The available options are listed below. This
4. is not a contract. **This is an agency disclosure form only. If you desire representation you must enter into a**
5. **written contract, according to state law** (a listing contract or a buyer/tenant representation contract). Until such time
6. as you choose to enter into a written contract for representation, you will be treated as a customer and will not receive
7. any representation from the broker or salesperson. The broker or salesperson will be acting as a Facilitator (see
8. paragraph IV on page two (2)), unless the broker or salesperson is representing another party, as described below.

9. **ACKNOWLEDGMENT: I/We acknowledge that I/we have been presented with the below-described options.**
10. **I/We understand that until I/we have signed a representation contract, I/we am/are not represented by the**
11. **broker/salesperson. I/We understand that written consent is required for a dual agency relationship.**

12. **THIS IS A DISCLOSURE ONLY, NOT A CONTRACT FOR REPRESENTATION.**

13. _____
(Signature) (Date) (Signature) (Date)

14. I. **Seller's/Landlord's Broker:** A broker who lists a property, or a salesperson who is licensed to the listing broker,
15. represents the Seller/Landlord and acts on behalf of the Seller/Landlord. A Seller's/Landlord's broker owes to
16. the Seller/Landlord the fiduciary duties described on page two (2).⁽²⁾ The broker must also disclose to the Buyer
17. material facts as defined in MN Statute 82.68, Subd. 3, of which the broker is aware that could adversely and
18. significantly affect the Buyer's use or enjoyment of the property. (MN Statute 82.68, Subd. 3 does not apply to
19. rental/lease transactions.) If a broker or salesperson working with a Buyer/Tenant as a customer is representing the
20. Seller/Landlord, he or she must act in the Seller's/Landlord's best interest and must tell the Seller/Landlord any
21. information disclosed to him or her, except confidential information acquired in a facilitator relationship (see paragraph
22. IV on page two (2)). In that case, the Buyer/Tenant will not be represented and will not receive advice and counsel
23. from the broker or salesperson.

24. II. **Buyer's/Tenant's Broker:** A Buyer/Tenant may enter into an agreement for the broker or salesperson to represent
25. and act on behalf of the Buyer/Tenant. The broker may represent the Buyer/Tenant only, and not the Seller/Landlord,
26. even if he or she is being paid in whole or in part by the Seller/Landlord. A Buyer's/Tenant's broker owes to the
27. Buyer/Tenant the fiduciary duties described on page two (2).⁽²⁾ The broker must disclose to the Buyer material facts
28. as defined in MN Statute 82.68, Subd. 3, of which the broker is aware that could adversely and significantly affect
29. the Buyer's use or enjoyment of the property. (MN Statute 82.68, Subd. 3 does not apply to rental/lease transactions.)
30. If a broker or salesperson working with a Seller/Landlord as a customer is representing the Buyer/Tenant, he or
31. she must act in the Buyer's/Tenant's best interest and must tell the Buyer/Tenant any information disclosed to him
32. or her, except confidential information acquired in a facilitator relationship (see paragraph IV on page two (2)).
33. In that case, the Seller/Landlord will not be represented and will not receive advice and counsel from the broker or
34. salesperson.

35. III. **Dual Agency - Broker Representing both Seller/Landlord and Buyer/Tenant:** Dual agency occurs when one
36. broker or salesperson represents both parties to a transaction, or when two salespersons licensed to the same
37. broker each represent a party to the transaction. Dual agency requires the informed consent of all parties, and
38. means that the broker and salesperson owe the same duties to the Seller/Landlord and the Buyer/Tenant. This
39. role limits the level of representation the broker and salesperson can provide, and prohibits them from acting
40. exclusively for either party. In a dual agency, confidential information about price, terms and motivation for pursuing
41. a transaction will be kept confidential unless one party instructs the broker or salesperson in writing to disclose
42. specific information about him or her. Other information will be shared. Dual agents may not advocate for one party
43. to the detriment of the other.⁽³⁾

44. Within the limitations described above, dual agents owe to both Seller/Landlord and Buyer/Tenant the fiduciary
45. duties described below.⁽⁴⁾ Dual agents must disclose to Buyers material facts as defined in MN Statute 82.68, Subd.
46. 3, of which the broker is aware that could adversely and significantly affect the Buyer's use or enjoyment of the
47. property. (MN Statute 82.68, Subd. 3 does not apply to rental/lease transactions.)

48. _____ I have had the opportunity to review the "Notice Regarding Predatory Offender Information" on
(initials) (initials)
49. page two. (2)

50. Page 2

51. IV. **Facilitator:** A broker or salesperson who performs services for a Buyer/Tenant, a Seller/Landlord or both but
52. does not represent either in a fiduciary capacity as a Buyer's/Tenant's Broker, Seller's/Landlord's Broker or Dual
53. Agent. **THE FACILITATOR BROKER OR SALESPERSON DOES NOT OWE ANY PARTY ANY OF THE FIDUCIARY**
54. **DUTIES LISTED BELOW, EXCEPT CONFIDENTIALITY, UNLESS THOSE DUTIES ARE INCLUDED IN A**
55. **WRITTEN FACILITATOR SERVICES AGREEMENT.** The facilitator broker or salesperson owes the duty of
56. confidentiality to the party but owes no other duty to the party except those duties required by law or contained in
57. a written facilitator services agreement, if any. In the event a facilitator broker or salesperson working with a Buyer/
58. Tenant shows a property listed by the facilitator broker or salesperson, then the facilitator broker or salesperson
59. must act as a Seller's/Landlord's Broker (see paragraph I on page one (1)). In the event a facilitator broker or
60. salesperson, working with a Seller/Landlord, accepts a showing of the property by a Buyer/Tenant being represented
61. by the facilitator broker or salesperson, then the facilitator broker or salesperson must act as a Buyer's/Tenant's
62. Broker (see paragraph III on page one (1)).

63. ⁽¹⁾ This disclosure is required by law in any transaction involving property occupied or intended to be occupied by
64. one to four families as their residence.

65. ⁽²⁾ The fiduciary duties mentioned above are listed below and have the following meanings:
66. **Loyalty** - broker/salesperson will act only in client(s)' best interest.
67. **Obedience** - broker/salesperson will carry out all client(s)' lawful instructions.
68. **Disclosure** - broker/salesperson will disclose to client(s) all material facts of which broker/salesperson has knowledge
69. which might reasonably affect the client(s)' use and enjoyment of the property.
70. **Confidentiality** - broker/salesperson will keep client(s)' confidences unless required by law to disclose specific
71. information (such as disclosure of material facts to Buyers).
72. **Reasonable Care** - broker/salesperson will use reasonable care in performing duties as an agent.
73. **Accounting** - broker/salesperson will account to client(s) for all client(s)' money and property received as agent.

74. ⁽³⁾ If Seller(s)/Landlord(s) elect(s) not to agree to a dual agency relationship, Seller(s)/Landlord(s) may give up the
75. opportunity to sell/lease the property to Buyer(s)/Tenant(s) represented by the broker/salesperson. If Buyer(s)/
76. Tenant(s) elect(s) not to agree to a dual agency relationship, Buyer(s)/Tenant(s) may give up the opportunity to
77. purchase/lease properties listed by the broker.

78. **NOTICE REGARDING PREDATORY OFFENDER INFORMATION:** Information regarding the predatory offender
79. registry and persons registered with the predatory offender registry under MN Statute 243.166 may be
80. obtained by contacting the local law enforcement offices in the community where the property is located,
81. or the Minnesota Department of Corrections at (651) 361-7200, or from the Department of Corrections Web site at
82. www.corr.state.mn.us.

MN-AGCYDISC-2 (8/14)

Close Converse: The above information has been obtained from the property owner or other sources that we deem reliable, however, neither the owner nor Close Converse guarantees the accuracy of such information. No part of this information may be reproduced, adapted, or transmitted without the prior written consent of Close Converse.

22 Washington Street, Brainerd, MN

Contact

Office Location

521 Charles Street
Suite 201
Brainerd, MN 56401

Mailing Address

PO Box 327
Brainerd, MN 56401

Phone

218-828-3334

Fax

218-828-4330

Website

www.CloseConverse.com

Agents

Chris Close, CCIM

C: 218-831-7510

chris@closeconverse.com

Tim Miller, CCIM

C: 218-838-8772

tim@closeconverse.com

Nate Grotzke, CCIM

C: 218-838-1000

nate@closeconverse.com

Close Converse: The above information has been obtained from the property owner or other sources that we deem reliable, however, neither the owner nor Close Converse guarantees the accuracy of such information. No part of this information may be reproduced, adapted, or transmitted without the prior written consent of Close Converse.

521 Charles Street, PO Box 327, Brainerd, MN 56401 | 218-828-3334 | www.closeconverse.com