

SALE/ LEASE

MULTIPLE USES

Industrial Space

2401 Charles City Road | Henrico, VA 23231



COMMONWEALTH
COMMERCIAL
Comprehensive Property Solutions



PROPERTY HIGHLIGHTS

- › 53± AC Heavy Industrial (M-2)
- › Available for Sale or Lease by CSX
- › CSX sale to approved rail user / Land lease also available
- › Minutes from RIC airport, I-895 and I-64 interchanges
- › 37± AC developable - full site history available on request
- › Rail access confirmed
Spur construction to be coordinated with CSX
- › For Sale: \$4,500,000
Lease Rate: Call agents for more information

DEMOGRAPHICS	3 MILE	5 MILE	10 MILE
POPULATION	14,953	33,814	107,546
DAYTIME EMPLOYEES	3,265	10,987	35,069

FOR MORE INFORMATION:

MICHAEL MAYHEW

Vice President

804-250-1345

mmayhew@commonwealthcommercial.com

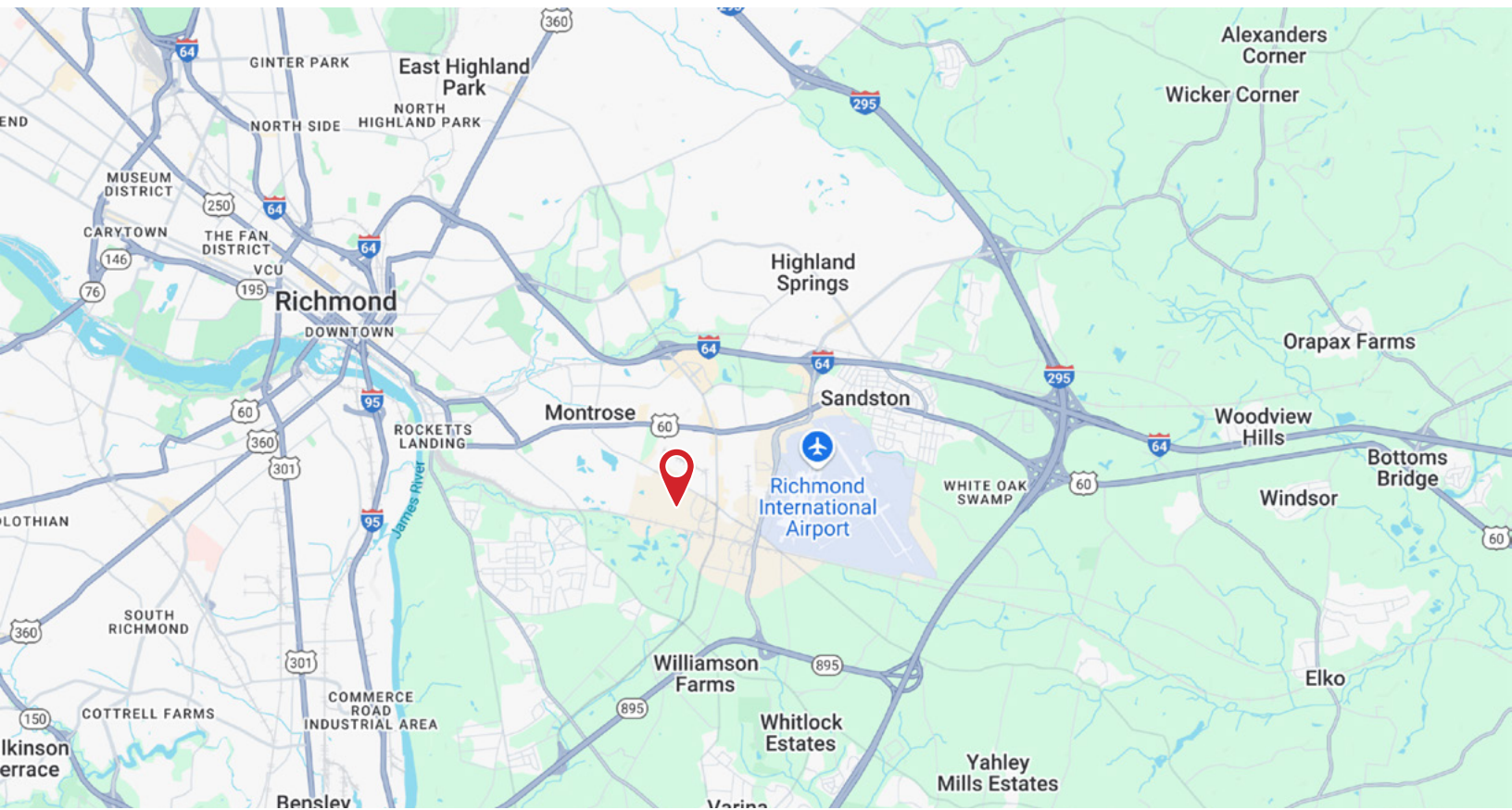
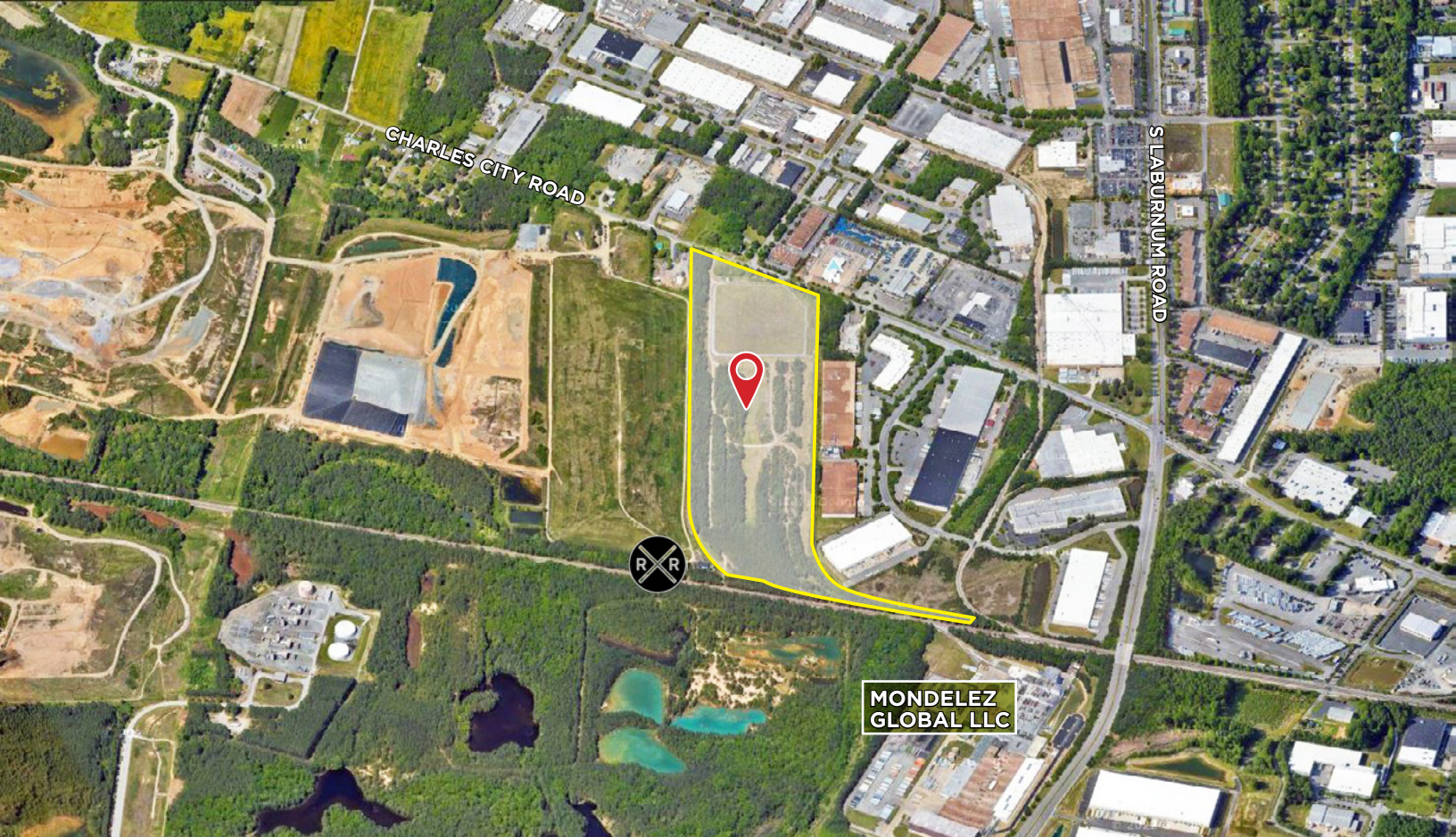
CHIP LOUTHAN

Senior Vice President

804-324-7206

clouthan@commonwealthcommercial.com

Commonwealth Commercial Partners, LLC represents the Owner of this property. Information contained herein is deemed reliable but is not guaranteed.



FOR SALE/LEASE | 2401 CHARLES CITY ROAD | HENRICO, VA 23231



**COMMONWEALTH
COMMERCIAL**
Comprehensive Property Solutions