



**CEDARCOM**  
smart locations for smart business

## SPACE FOR LEASE



### **1985 Swarthmore Ave Unit 7 Lakewood, NJ**

- Great Location in the Lakewood Industrial Park. This building is right off the Garden State Parkway, Route 70, and Route 9.
- The Lakewood Industrial Park is one of New Jersey's Urban Enterprise Zones. It offer businesses multiple benefits and incentives to encourage economic development.

Below is a link that provides additional information.

<http://www.lakewoodnj.gov/departments/uez>

### **AVAILABLE SPACE**

4,188 SQ FT

### **DOORS**

1 - 10 x 8 Loading Dock

1 - 10 x 12 Drive In

### **CEILING HEIGHT**

22 - 26 Ft High

### **ZONING**

M1, Industrial Zone

### **CONTACT US**

732-994-4000

[Cedarcom.com](http://Cedarcom.com)

### **DeAnna Pistola**

Ext 202

[dpistola@cedarcom.com](mailto:dpistola@cedarcom.com)

### **Diana King**

Ext 213

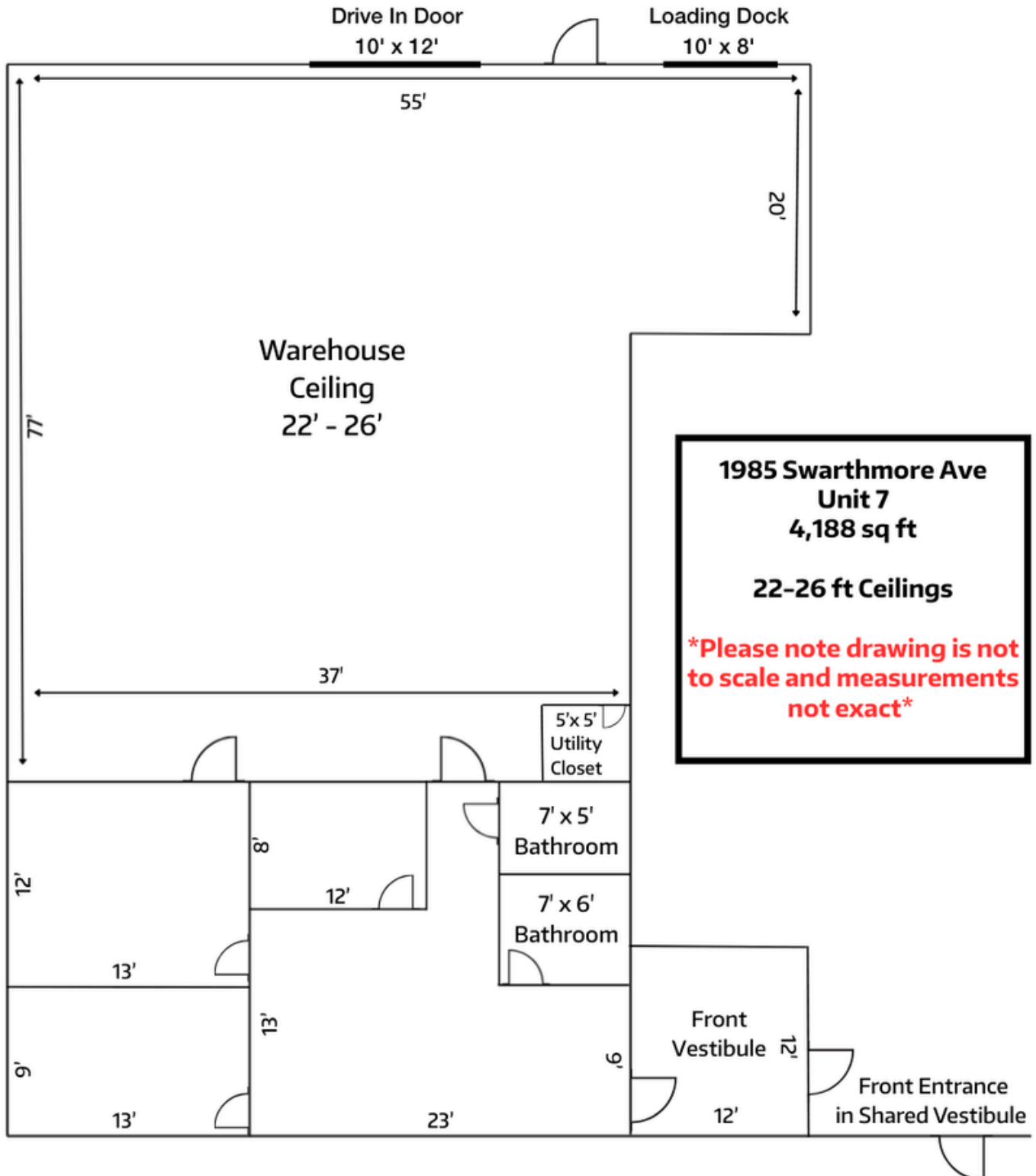
[dking@cedarcom.com](mailto:dking@cedarcom.com)



# CEDARCOM

smart locations for smart business

## SPACE LAYOUT







# CEDARCOM

smart locations for smart business

## SPACE FOR LEASE

