

Gingerbread Court

EST EARLY 1900'S

Now Leasing Food / Retail / Office Space

**517 OCEAN FRONT WALK
VENICE, CA 90291**

INFO@PCMLLC.COM 805-643-6093

Gingerbread Court

EST EARLY 1900's

Now Leasing Food / Retail / Office Space
517 Ocean Front Walk

Now Leasing

FOOD SPACE

Approx. 400sqft

RETAIL SPACE

Approx. 360-1200sqft

OFFICE SPACE

Approx. 500-1200sqft



PRICING AVAILABLE UPON REQUEST

INFO@PCMLLC.COM 805-643-6093

Gingerbread Court

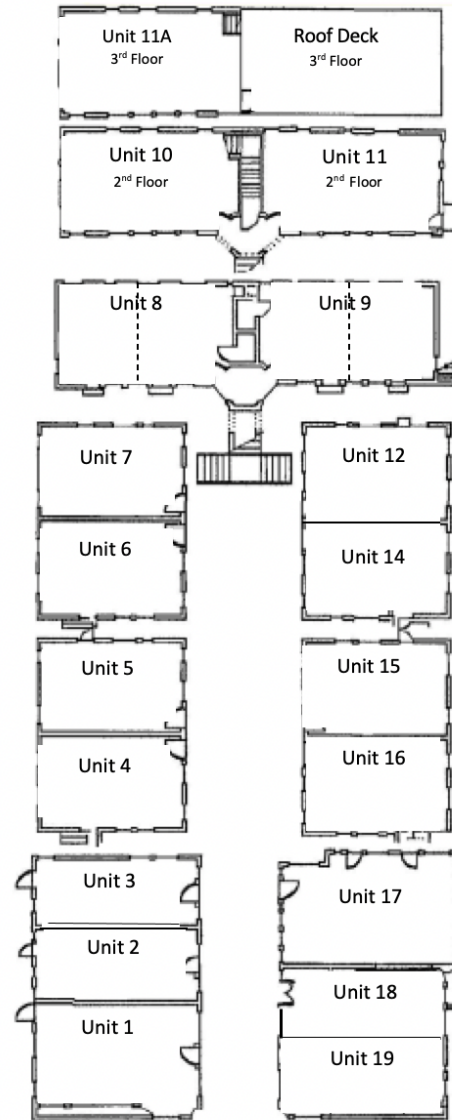
EST EARLY 1900's

Now Leasing Food / Retail / Office Space

517 Ocean Front Walk

Renowned Location

Gingerbread Court is prominently situated on The Venice Beach Boardwalk which is conveniently located within 15 minutes from LAX and Downtown LA. and attracts an estimated 15 million visitors per year making it the second most popular tourist attraction in Southern California, second only to Disneyland.



Boardwalk

Venice Beach Food Scene

"What was once an artist community has transformed into the hippest neighborhood in LA. The neighborhood's Bohemian-chic vibes have retained age-old institutions while attracting young chefs and restauranteurs. The resulting dining scene is one of LA's most eclectic and dynamic."

- Eater Los Angeles

