



4372 N. Loop 1604 W.

Shavano Park

San Antonio, TX 78231

For Lease

Sanjay Misra
tm@qpmenterprises.com

PROPERTY INFORMATION

Overview

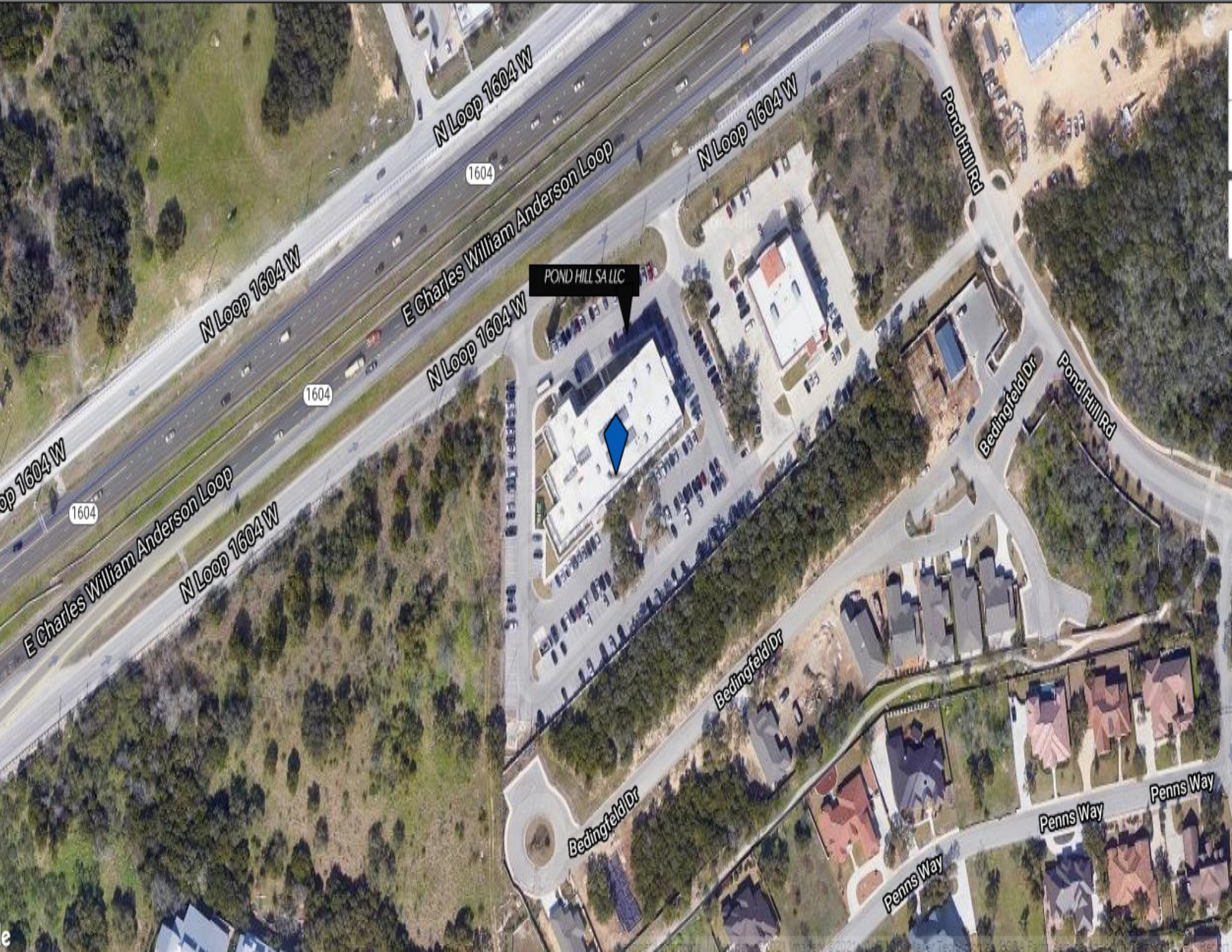
Pond Hill is a beautifully finished three-story office building located on the east bound access road of Loop 1604 between Military and Lockhill Selma with close proximity to IH-10. Its location offers convenient access to numerous food, entertainment and retail establishments.

Details

72,600 SF Gross Leasable Area
Availability: 14,293 RSF
Parking Ratio: 3.44/1,000 SF
239 Parking Spaces
Spec Suites Ready for Occupancy







N Loop 1604 W

N Loop 1604 W

E Charles William Anderson Loop

N Loop 1604 W

POND HILL SA LLC

N Loop 1604 W

Pond Hill Rd

Bedingfeld Dr

Pond Hill Rd

op 1604 W

1604

E Charles William Anderson Loop

N Loop 1604 W

Bedingfeld Dr

Bedingfeld Dr

Penns Way

Penns Way

Penns Way

Willie's
FREETAIL Academy
Freddy's STEAKBURGERS
CHASE
BUSH'S BAKERY

WINGSTOCK
Starbucks
McALISTER'S DELI

H BAPTIST EMERGENCY HOSPITAL

EXON
Local COFFEE

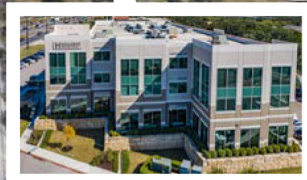
LIVING SPACES

LOOP 1604

MILITARY

POND HILL RD

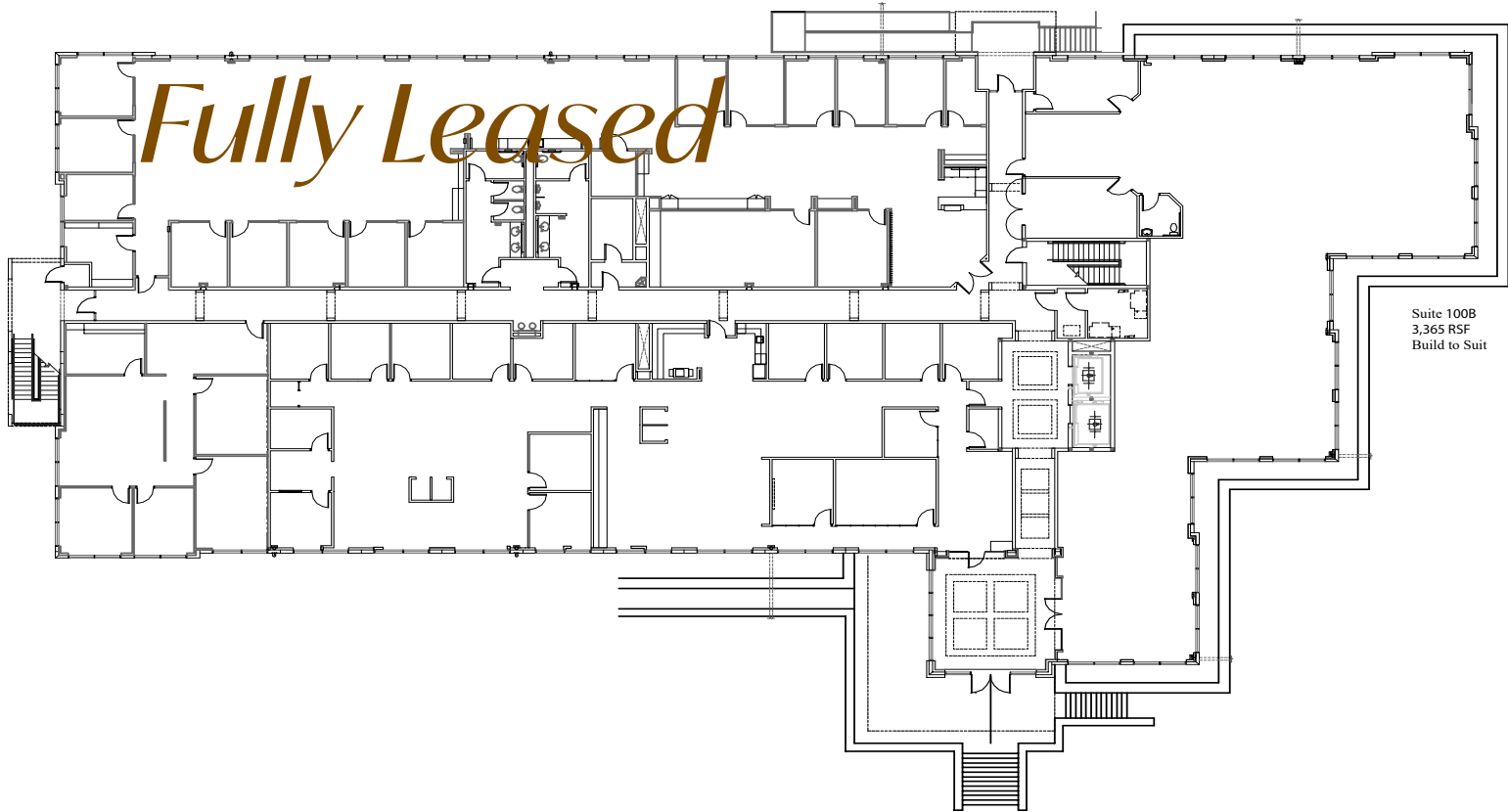
DISCOUNT TIRE



POND HILL

SHAVANO PARK, TEXAS

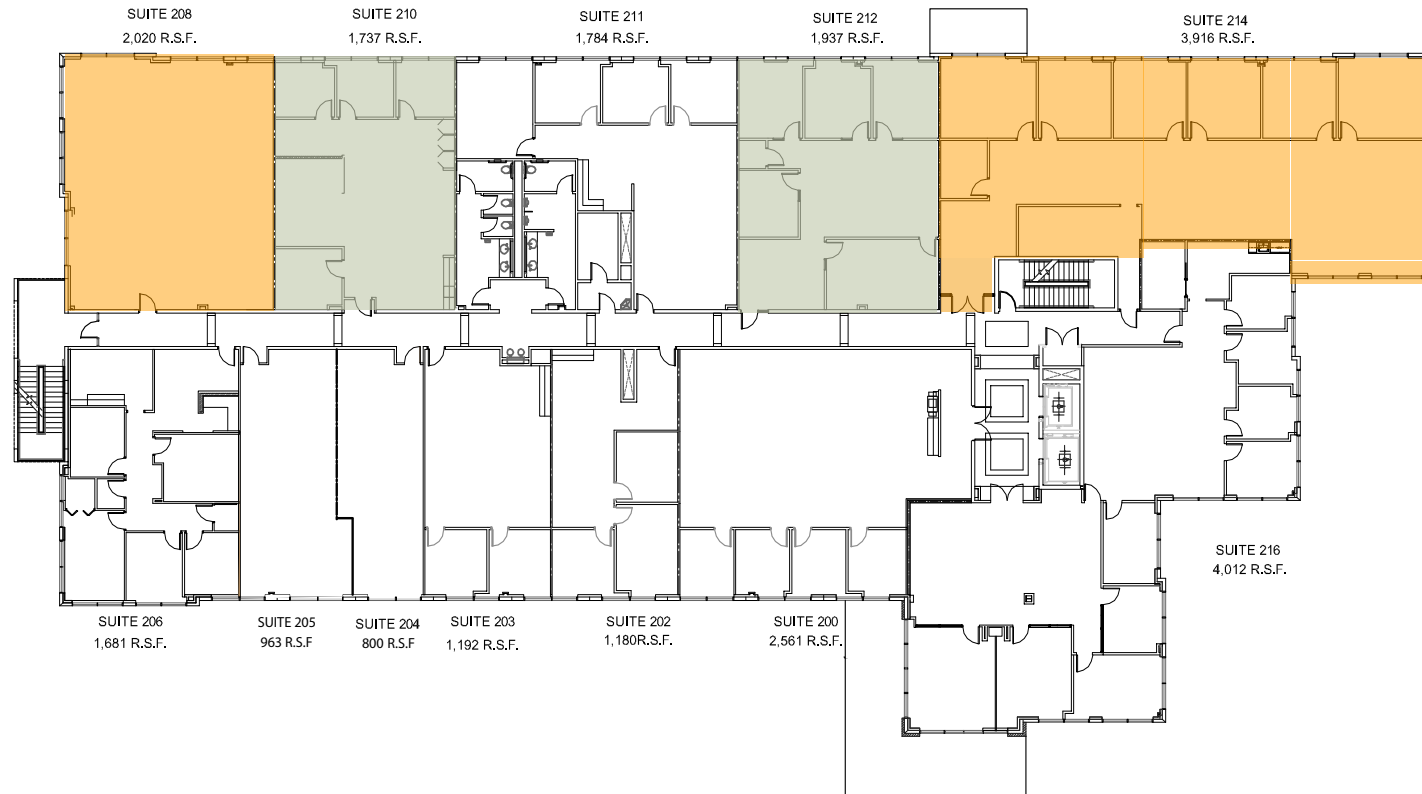
LEVEL 1



POND HILL

SHAVANO PARK, TEXAS

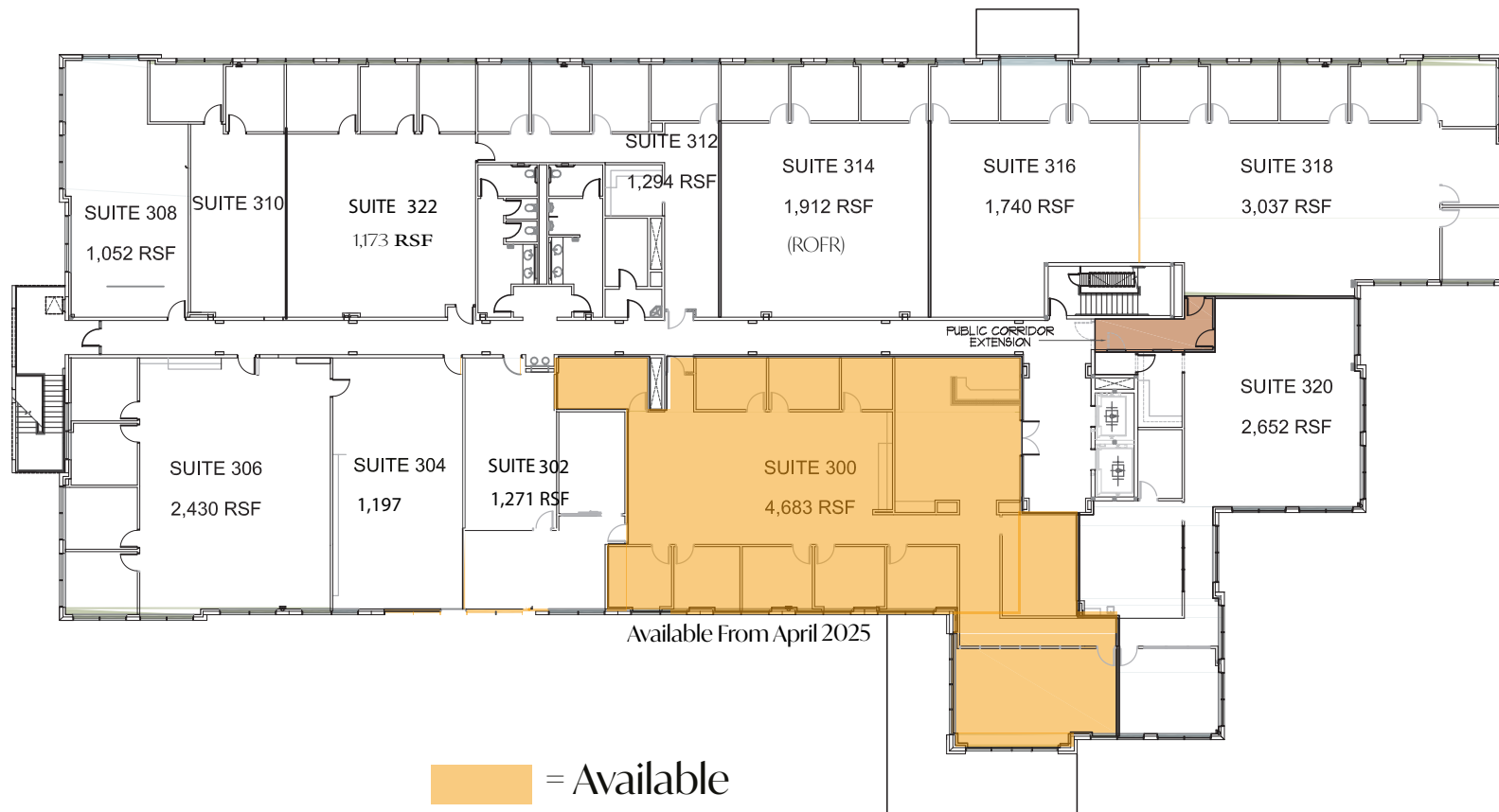
LEVEL 2



POND HILL

SHAVANO PARK, TEXAS

LEVEL 3





Sanjay Misra
tm@qpmenterprises.com

