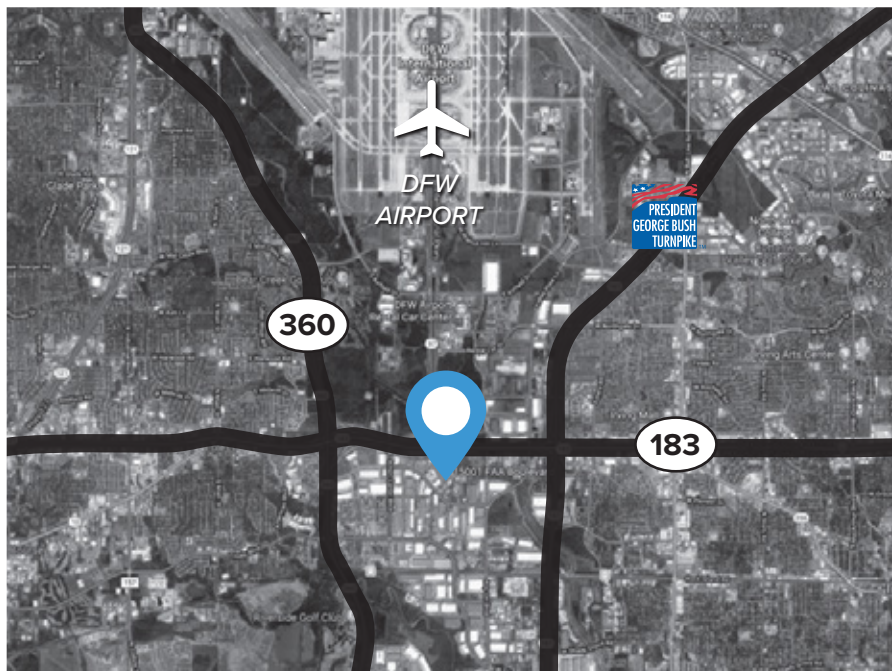


15001 FAA BOULEVARD



- **9:1000 Parking patio**
- 45,145 RSF building
- Divisible to 6,200 RSF
- Efficient floor plan with minimal common area factor
- 1,000 kW Generator
- Building signage available
- Situated in the Centreport Business Park
- Close proximity to numerous amenities
- Mass transit available through Trinity Railway Express
- Excellent opportunity for dense user



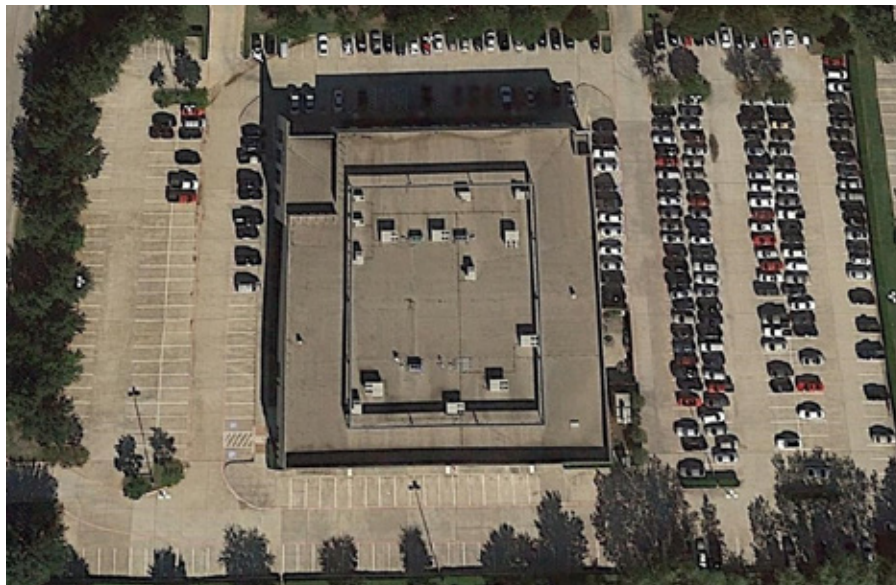
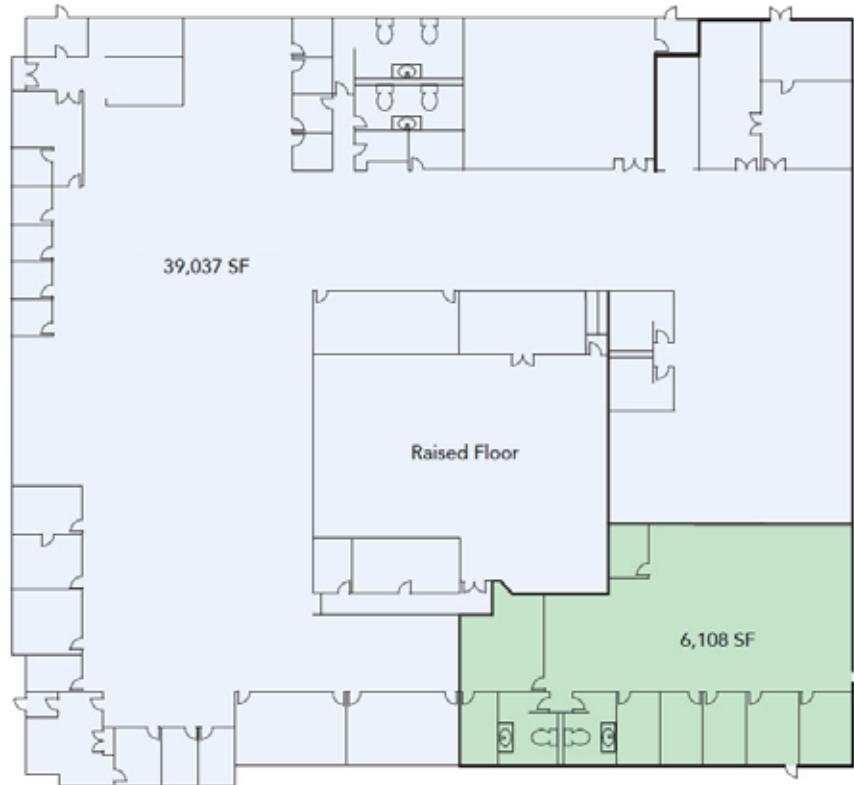
For more information, please contact

TIM TERRELL at 214.267.0406 or tterrell@streamrealty.com.

STREAM

15001 FAA BOULEVARD

6,200 – 45,145 SQUARE FEET



For more information, please contact
TIM TERRELL at 214.267.0406 or tterrell@streamrealty.com.

