



1795

avani DERM SPA

1795 CLARKSON ROAD

CHESTERFIELD, MO 63017

**1,364 SF CHESTERFIELD OFFICE
SUBLEASE AVAILABLE**

XTEAM
RETAIL-ADVISORS

1795 CLARKSON ROAD

FLOOR PLAN & DEMOGRAPHICS

PLEASE CONTACT:

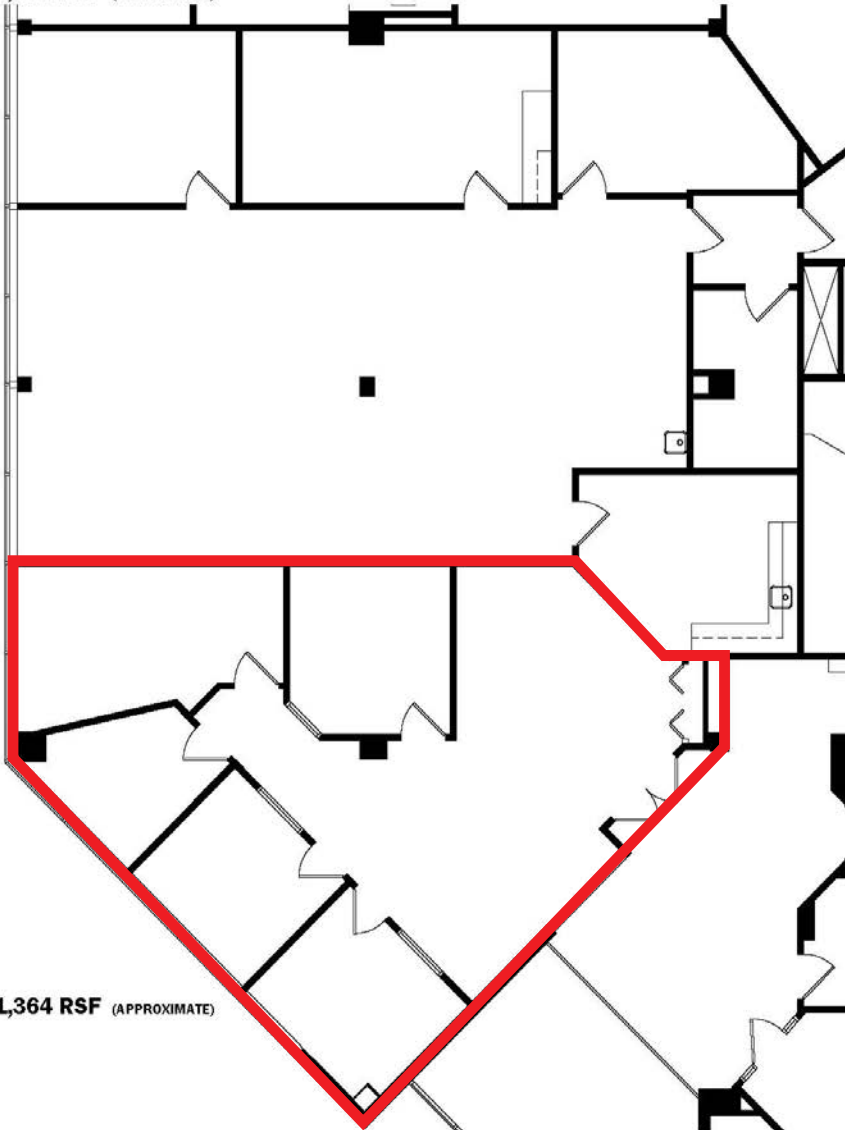
L³ CORPORATION
REBECCA THESSEN

314.282.9836 (DIRECT)

314.620.0093 (MOBILE)

REBECCA@L3CORP.NET

SUITE 250 2,371 RSF (APPROXIMATE)






SUITE 240 1,364 RSF (APPROXIMATE)

- 1,364 SF CLASS A OFFICE
- SUBLEASE TERM THROUGH 12/1/2027
- CONVENIENTLY LOCATED AT THE SIGNALIZED INTERSECTION OF CLARKSON RD AND BAXTER RD
- \$18.50 PSF, FULL SERVICE

VIEW & DOWNLOAD:

DEMO REPORT

POPULATION ANALYSIS

POPULATION	 <u>1 MILE</u> 9,446	<u>3 MILES</u> 53,538	<u>5 MILES</u> 127,824
HOUSEHOLDS	 <u>1 MILE</u> 4,111	<u>3 MILES</u> 21,068	<u>5 MILES</u> 48,953
AVG HH INCOME	 <u>1 MILE</u> \$107,245	<u>3 MILES</u> \$114,109	<u>5 MILES</u> \$107,450

1795 CLARKSON ROAD

SUITE 240 PHOTOS

PLEASE CONTACT:

L³ CORPORATION
REBECCA THESSEN

314.282.9836 (DIRECT)

314.620.0093 (MOBILE)

REBECCA@L3CORP.NET



The information in this flyer has been obtained from sources believed reliable. While we do not doubt its accuracy, we have not verified it and make no guarantee about it. It is your responsibility to independently confirm its accuracy and completeness. Any projections, opinions, assumptions or estimates used are for example only and do not represent the current or future performance of the property. The value of this transaction to you depends on tax and other factors which should be evaluated by your tax, financial and legal advisors. You and your advisors should conduct a careful, independent investigation of the property to determine to your satisfaction the suitability of the property for your needs.

1795 CLARKSON ROAD

MARKET AERIAL

PLEASE CONTACT:

L³ CORPORATION
REBECCA THESSEN

314.282.9836 (DIRECT)

314.620.0093 (MOBILE)

REBECCA@L3CORP.NET



The information in this flyer has been obtained from sources believed reliable. While we do not doubt its accuracy, we have not verified it and make no guarantee about it. It is your responsibility to independently confirm its accuracy and completeness. Any projections, opinions, assumptions or estimates used are for example only and do not represent the current or future performance of the property. The value of this transaction to you depends on tax and other factors which should be evaluated by your tax, financial and legal advisors. You and your advisors should conduct a careful, independent investigation of the property to determine to your satisfaction the suitability of the property for your needs.