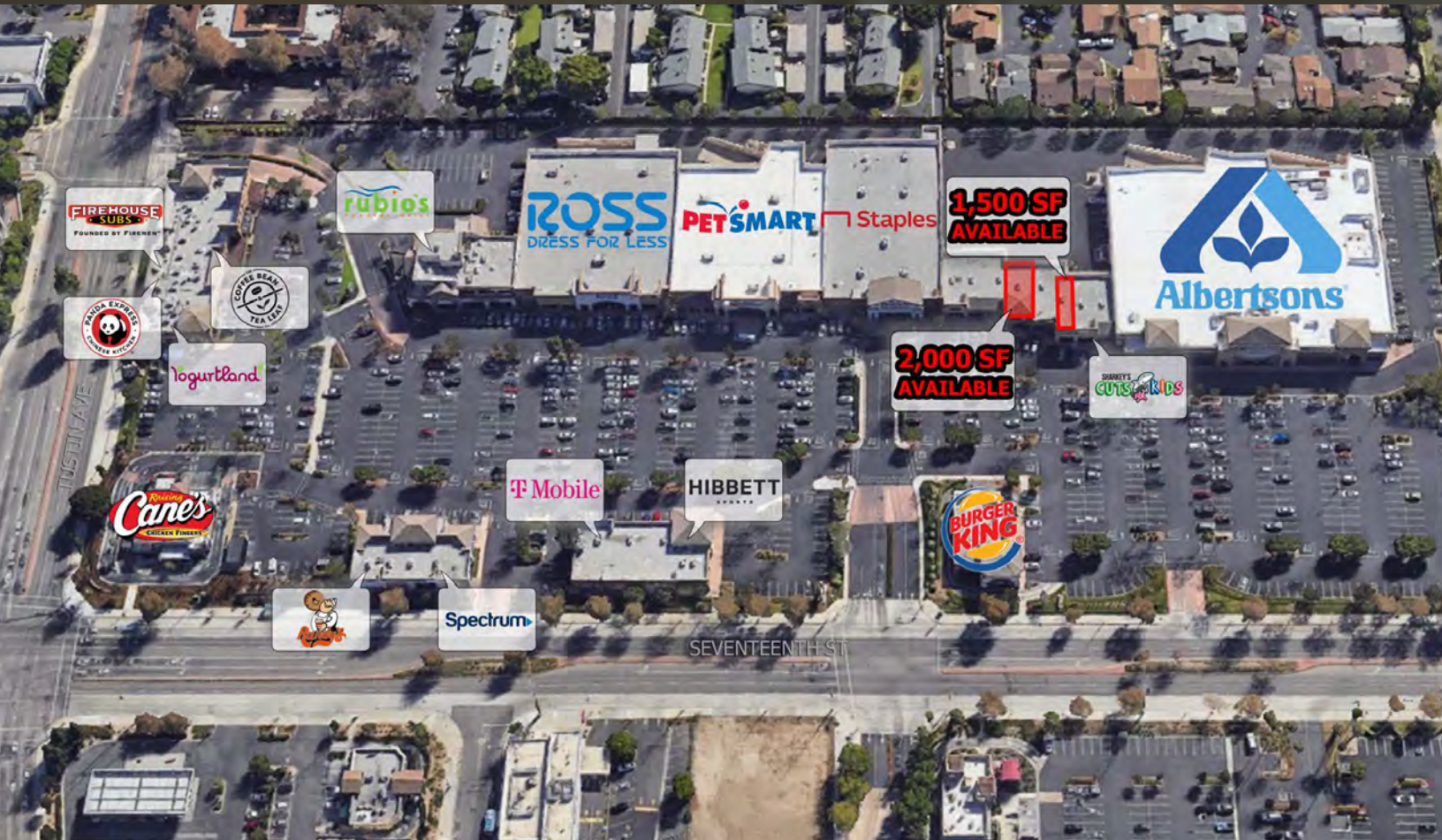


FOR LEASE

CENTRE ON SEVENTEENTH

2010-2278 E. 17TH STREET SANTA ANA, CA 92705

CORELAND
COMPANIES



1,500 - 2,000 SF For Lease

PROPERTY DESCRIPTION

Anchored by Albertsons, PetSmart, Staples and Ross, Centre of Seventeenth Street is the predominant power center serving the North Tustin marketplace. Given the large daytime population area, it serves as one of the main lunch spots for Tustin, Santa Ana and Orange. Other tenants include: Burger King, Raising Cane's, Panda Express and T-Mobile.

PROPERTY HIGHLIGHTS

- Over 50,000 cars per day at Seventeenth Street & Tustin Avenue
- Over 68,000 employees with 2-mile radius
- Close proximity to Costa Mesa (55) Freeway

SPACES

SPACE SIZE

C	1,500 SF
D2	2,000 SF

DEMOGRAPHICS

1 MILE

3 MILES

5 MILES

Total Households	7,955	75,648	171,891
Total Population	23,560	256,755	581,734
Average HH Income	\$131,365	\$121,753	\$130,937

MATT HAMMOND

CHRIS PREMAC

The information contained herein has been obtained from sources we deem reliable, however no warranty or representation is made to the accuracy of the information. Terms of lease or availability are subject to change or withdrawal without notice.

714.210.6711
mhammond@coreland.com
LIC #01235239

714.210.6705
cpremac@coreland.com
LIC #01966099

FOR LEASE

CENTRE ON SEVENTEENTH

2010-2278 E. 17TH STREET SANTA ANA, CA 92705



FOR LEASE

CENTRE ON SEVENTEENTH

2010-2278 E. 17TH STREET SANTA ANA, CA 92705



CORELAND
COMPANIES

MATT HAMMOND

714.210.6711
mhammond@coreland.com
LIC #01235239

CHRIS PREMAC

714.210.6705
cpremac@coreland.com
LIC #01966099