



CUSHMAN &
WAKEFIELD



sage
PARTNERS

14519 CANTRELL RD | LITTLE ROCK, AR 72223



FOR LEASE

WEST LITTLE ROCK RETAIL SPACE

Property Highlights

- 1,788 SF former bank branch available in West Little Rock
- Site will be 0.80 acres after the Highway 10 expansion is complete
- 24 surface parking spaces
- 3 lane drive-thru
- Cantrell Road VPD: 41,000
- Conveniently located near several national retailers, restaurants, and banks

*information deemed reliable but not guaranteed

**For more information, please
contact:**

Ryan Gibson

+1 501 680 6119

rgibson@sagepartners.com

Rose Kline

+1 817 965 1225

rkline@sagepartners.com

501 716 5511

[sagepartners.com](https://www.sagepartners.com)

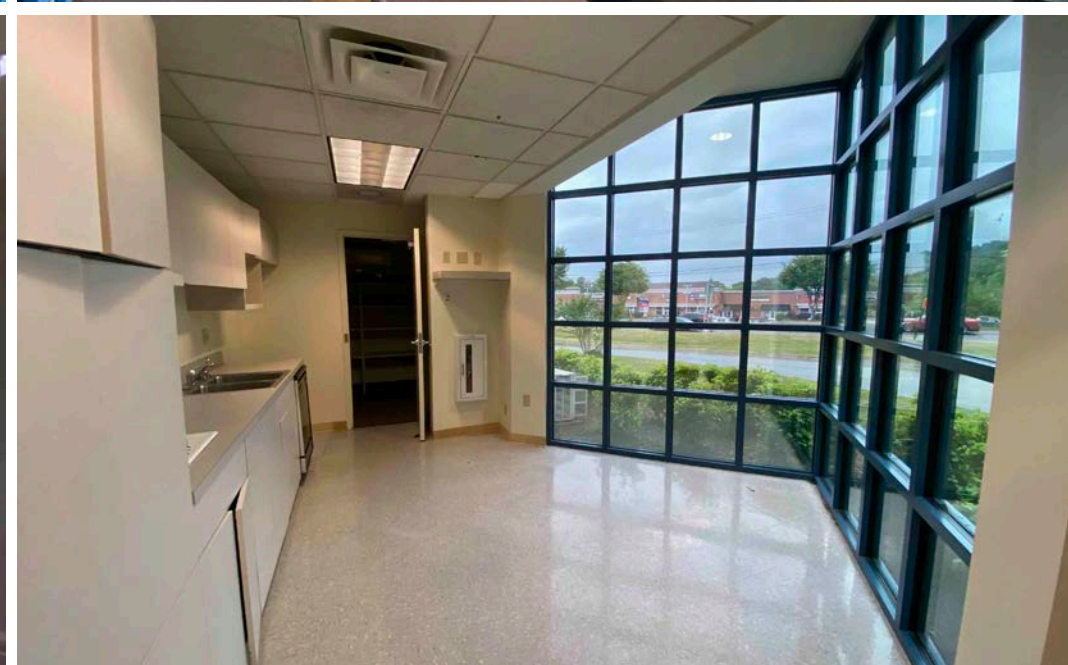
INTERIOR PHOTOS 14519 CANTRELL RD | LITTLE ROCK, AR 72223



CUSHMAN &
WAKEFIELD



sage
PARTNERS



SITE PLAN 14519 CANTRELL RD | LITTLE ROCK, AR 72223

