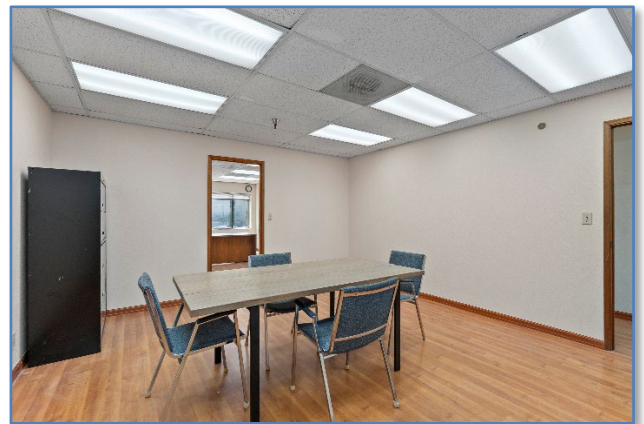
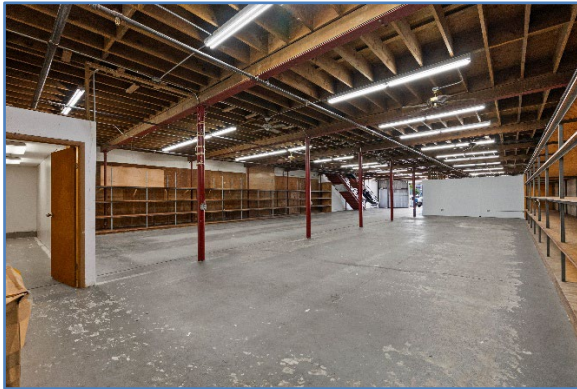


Cannery Row-Honolulu ***500 Alakawa St. 102C***



Commercial Condominium

Rarely available commercial warehouse / office space in the Cannery Row project (across from Home Depot). Two stories of warehouse or manufacturing space plus a 1,700 SF mezzanine office buildout. Working conveyor from 1st to 2nd floor included. Vacant and ready to move in.

TMK: 1-1-5-15-11-079/163 Year Built: 1964
Three Stories Renovated: 1986
GLA: 11,794 Resv. Parking: 16
Base Rent: \$21,230 /month
CAM/RPT: \$3,997 /month



Mark Storfer PB (R)

Cell: 808-375-0449

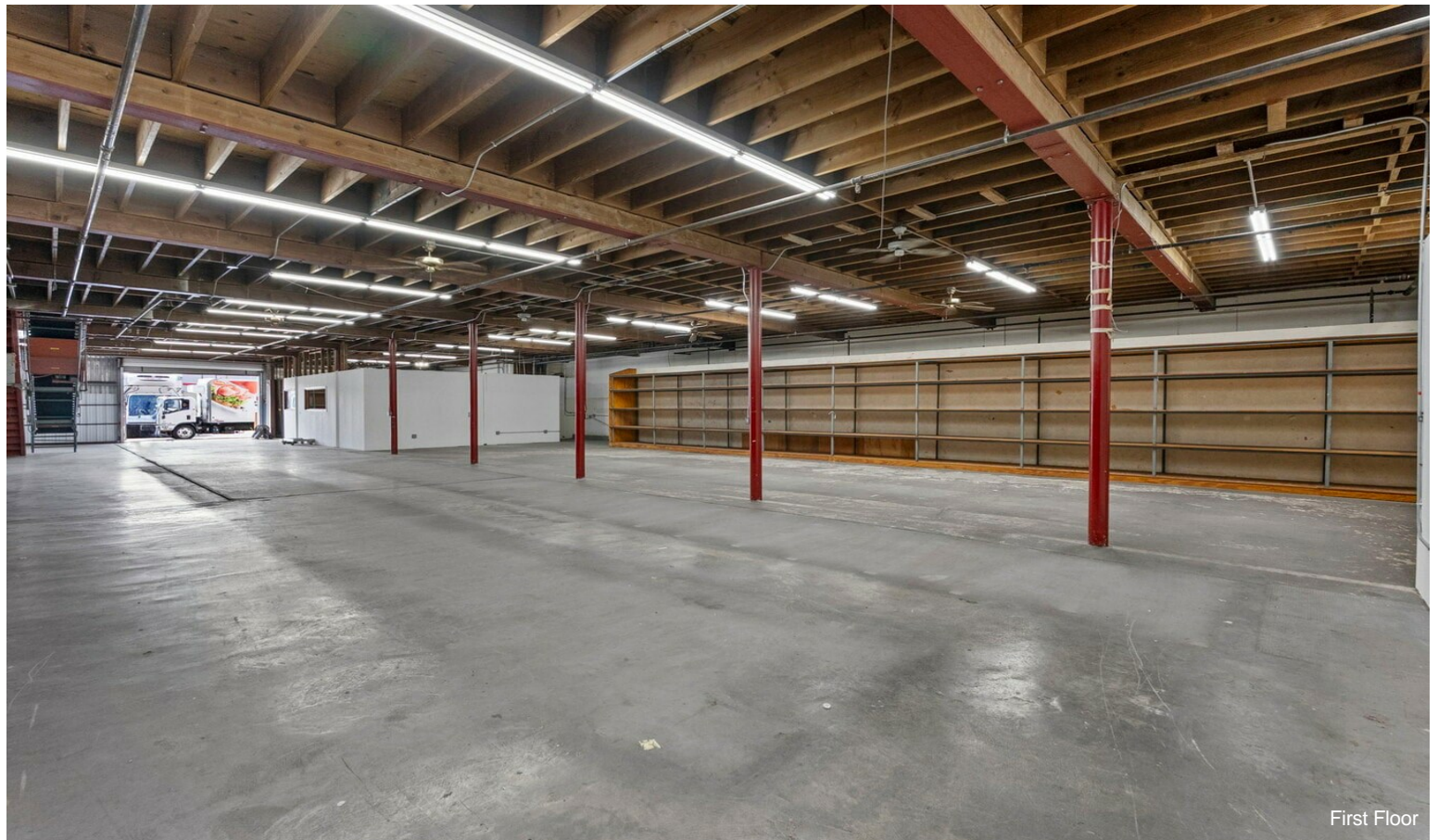
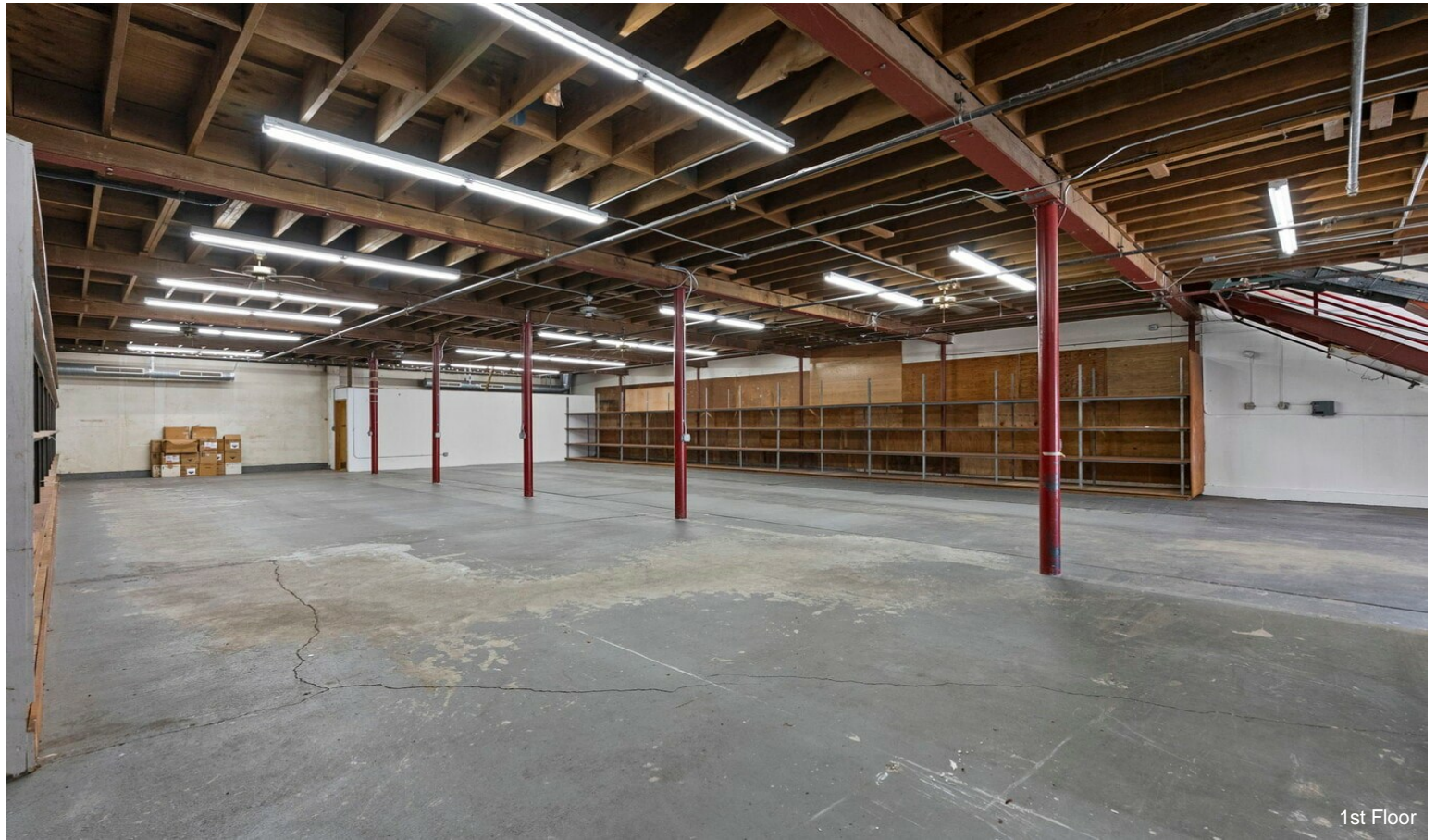
MStorfer@DMRealtyHI.com

DM Realty Hawaii, LLC

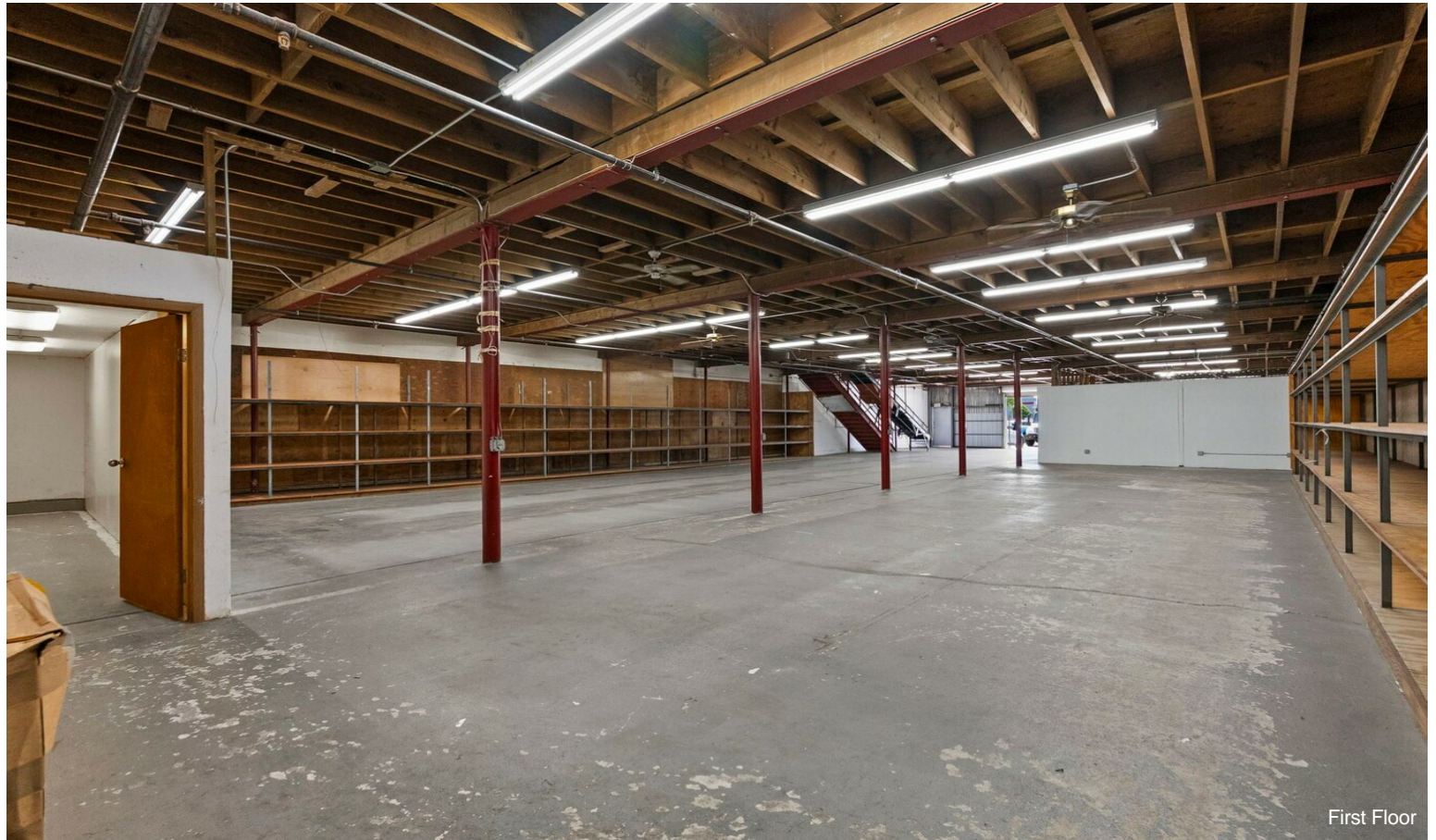
1088 Bishop St., Suite 3101

Honolulu, HI 96813

Property Photos



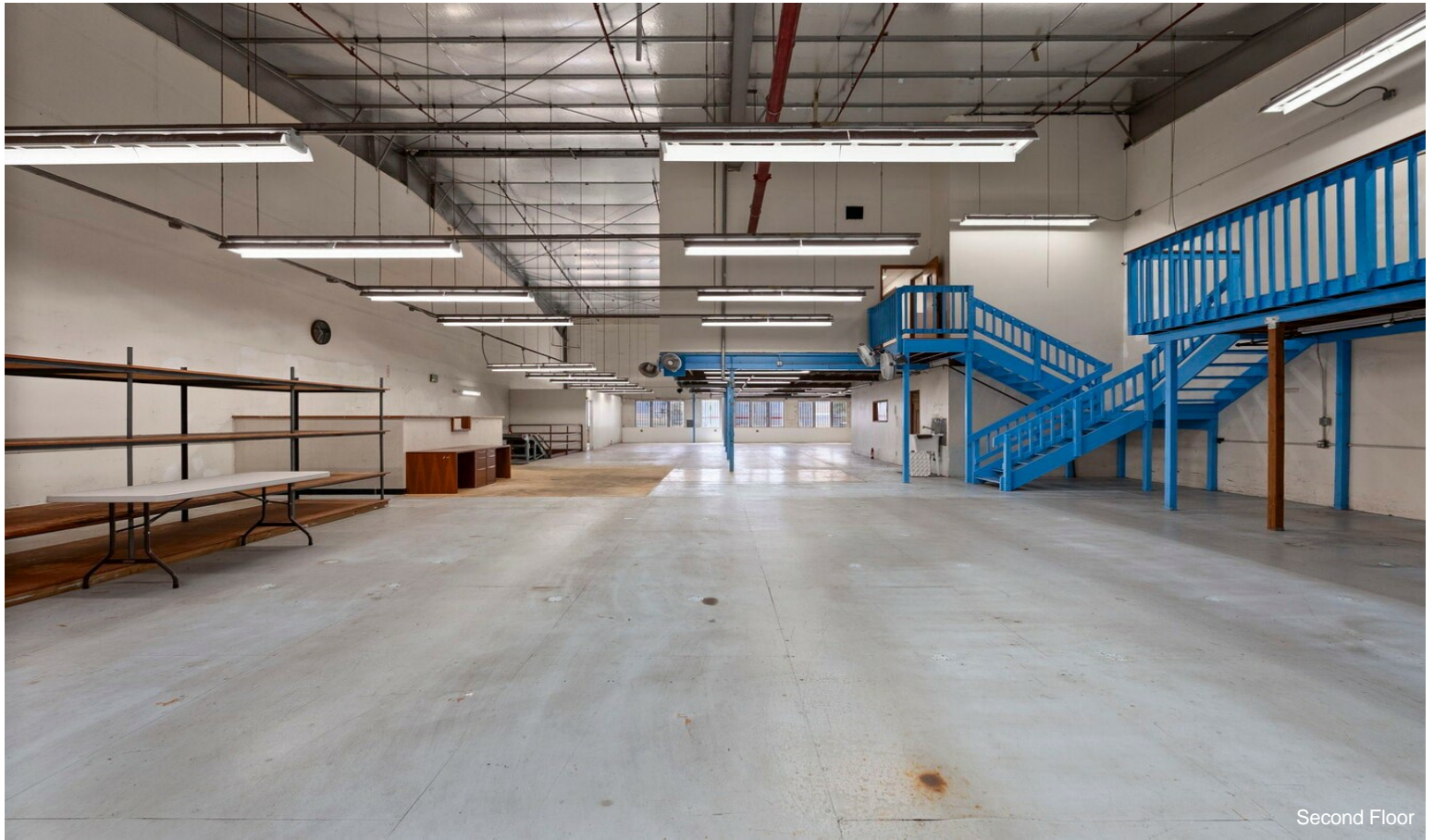
Property Photos



Property Photos



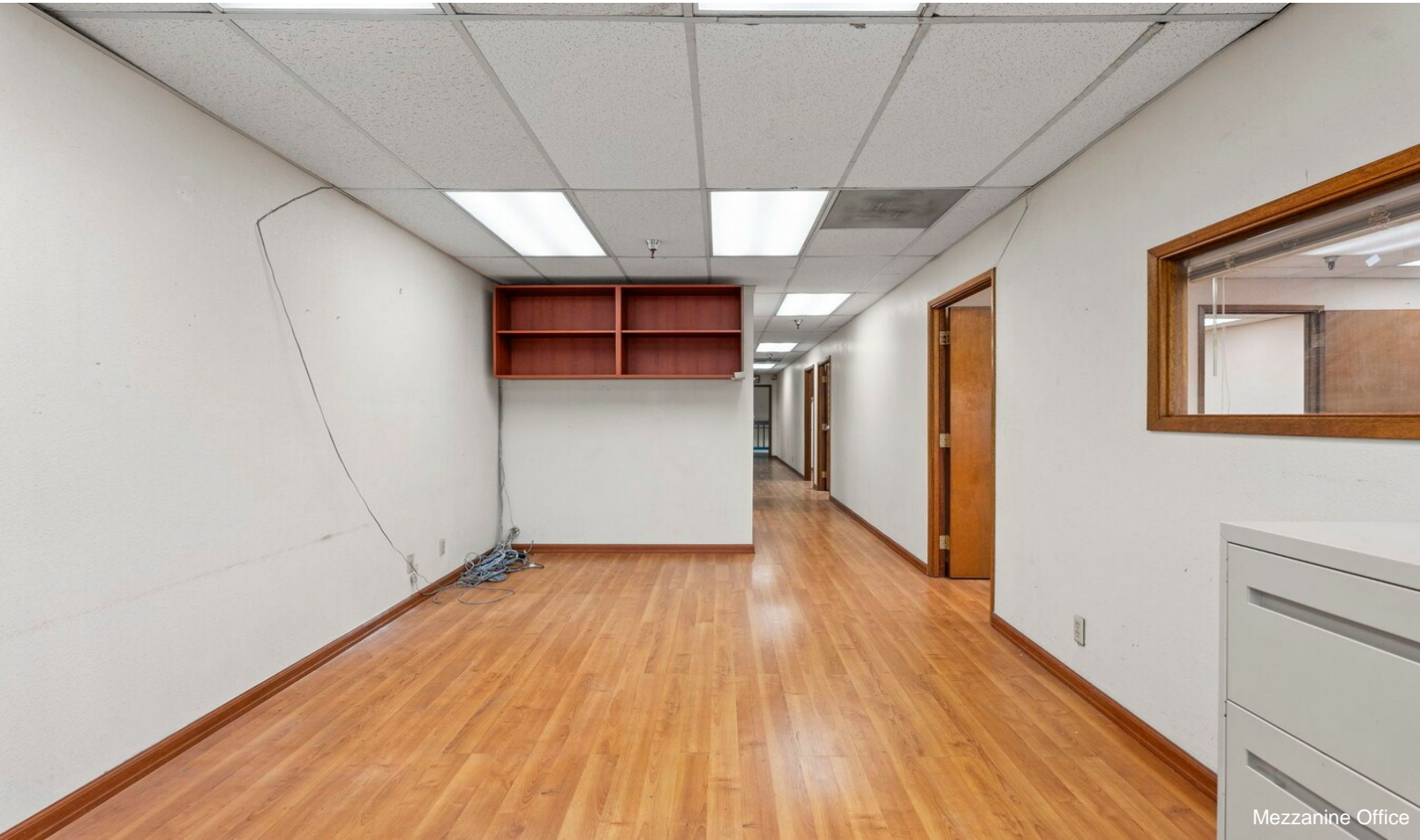
Property Photos



Property Photos

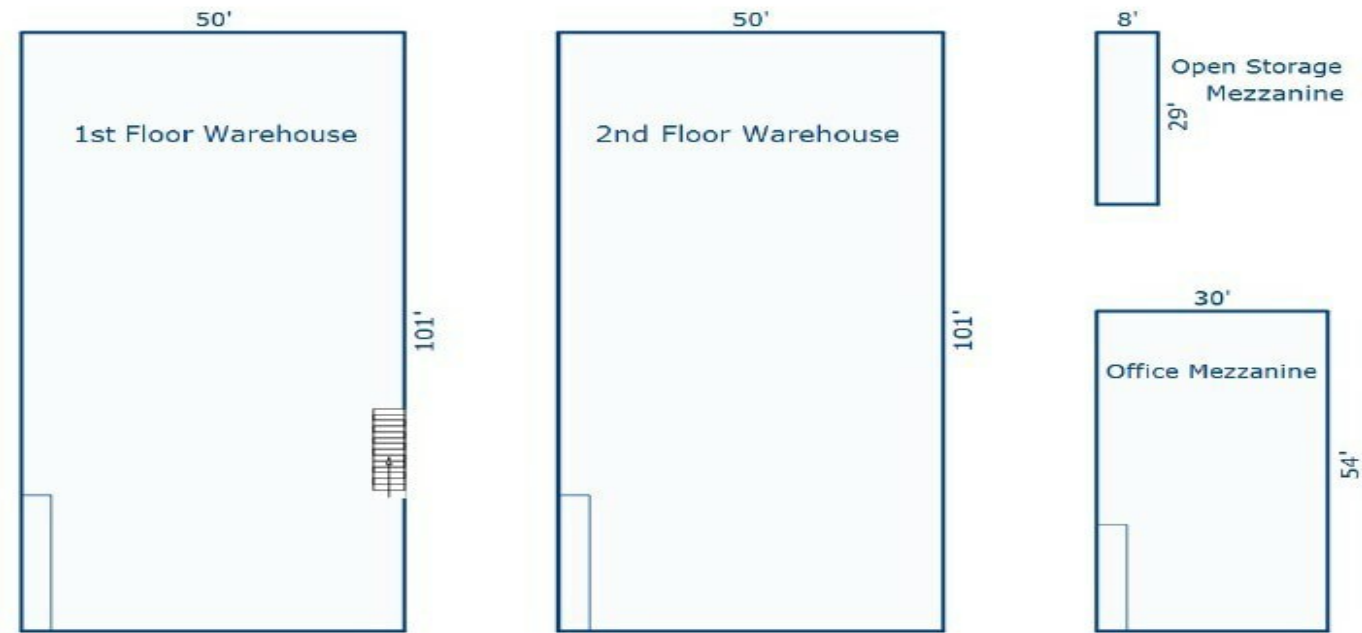


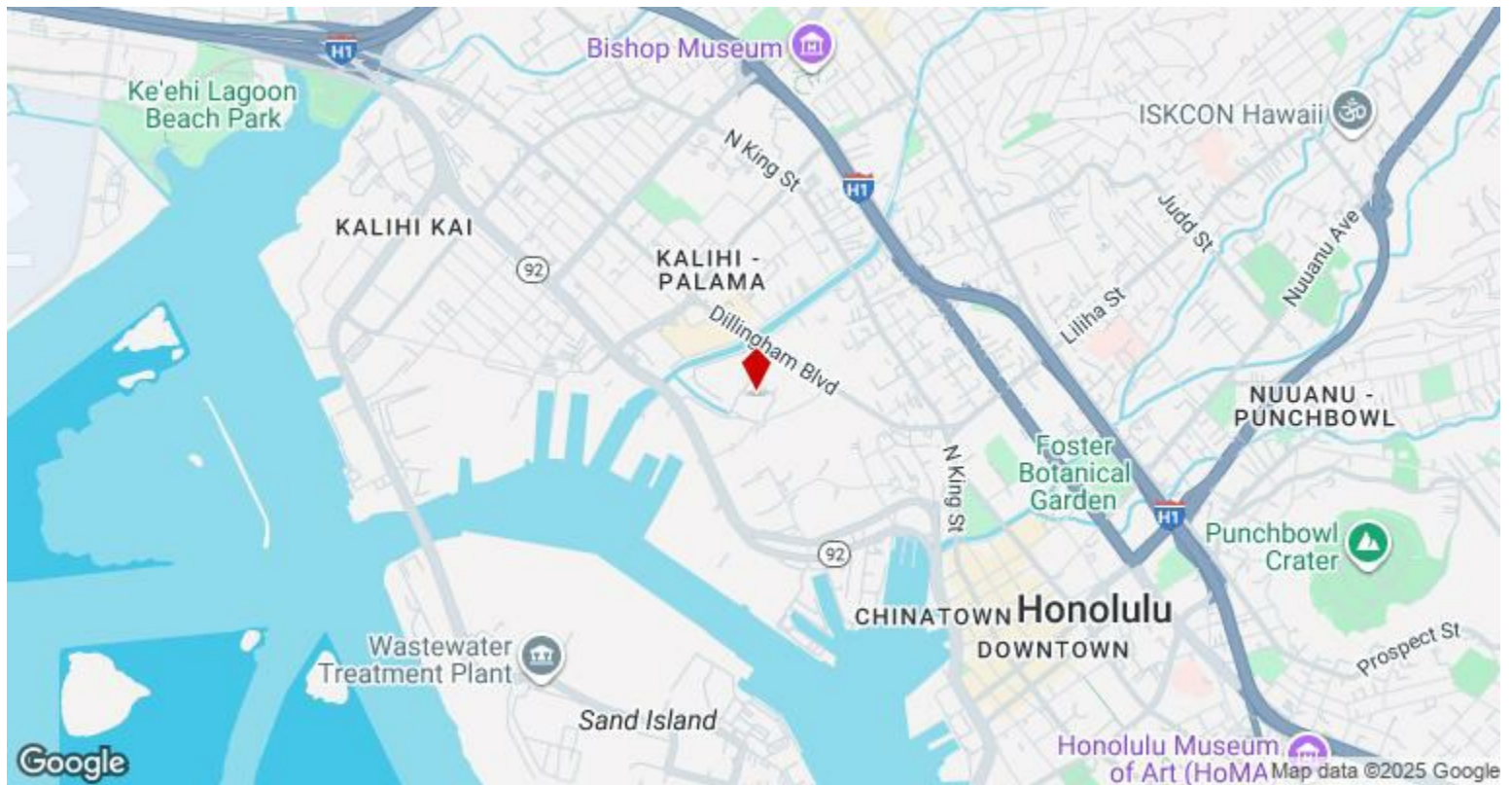
Property Photos



FLOOR PLAN

The following illustrates the general subject floor plan. The warehouse levels are open plans with minor partitioning/storage on the first floor and a lunch room and two restrooms on the second floor. The office mezzanine contains a center hallway with offices on each side.





500 Alakawa St, Honolulu, HI 96817

Rarely available commercial warehouse / office space in the Cannery Row project (across from Home Depot). Two stories of warehouse or manufacturing space totaling over 10,000 SF plus a 1,700 SF mezzanine office buildout. Working conveyor from 1st to 2nd floor included. 16 reserved parking spaces included. Vacant and ready to move in.