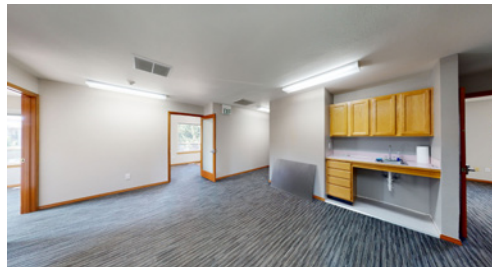




SECOND-FLOOR OFFICE SPACE WITH ON-SITE PARKING



8613 MARTIN WAY E, LACEY, WA | NORTHSORE CORPORATE CENTER

LISTING INFORMATION

- ▶ Attractive second-floor office space with six private offices, a coffee bar, a private restroom, lots of natural light, and on-site parking.
- ▶ Easy access on major thoroughfare with over 20,000 vehicles per day.
- ▶ 2nd floor walk-up (not ADA accessible).
- ▶ Utilities are included in the base rent.

SUITE 201: 1,600 SF

\$17.50/SF, GROSS

CBA# 38699725



[rants.group/8613MartinWayE201vt](https://rants.group/8613MartinWayE201vt)

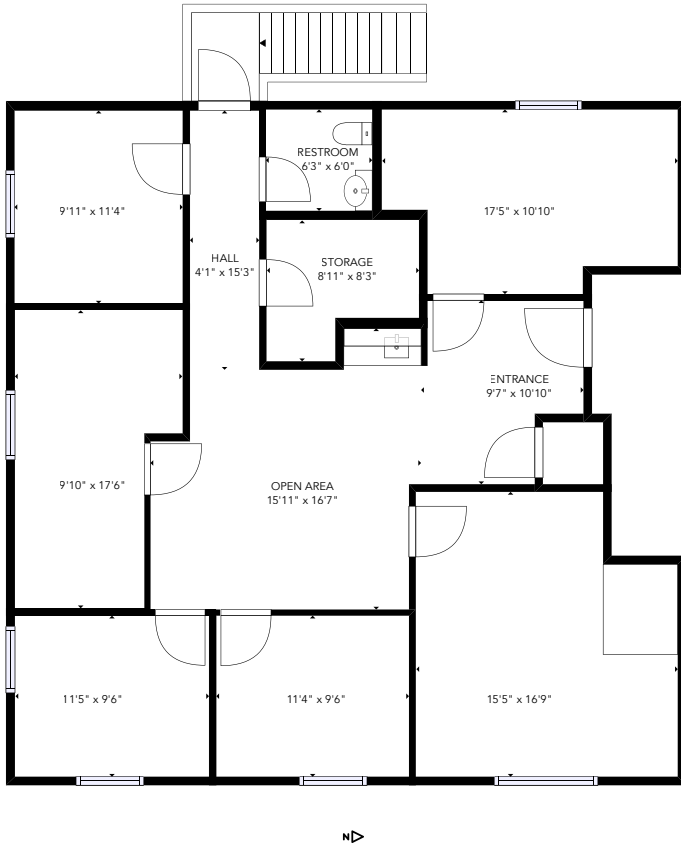
This information, while obtained from sources we deem reliable, is not guaranteed. It is provided without any representation, warranty or guarantee, expressed or implied as to its accuracy. Prospective buyer or tenant should conduct an independent investigation and verification of all matters deemed to be material, including, but not limited to, statements of income and expenses. Consult your attorney, accountant, or other professional advisor.



**Carolyn Graden, CCIM**  
MANAGING BROKER  
(360) 763-4994  
[carolyn@rantsgroup.com](mailto:carolyn@rantsgroup.com)

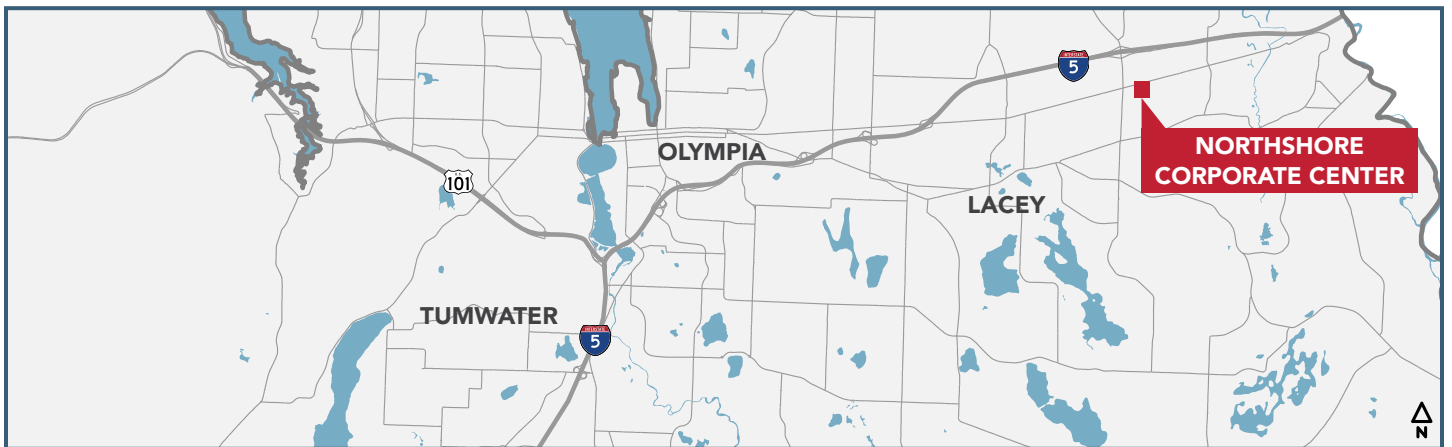
**360-943-8060**  
**RANTSGROUP.com**

8613 MARTIN WAY E, LACEY, WA | NORTHSORE CORPORATE CENTER



ND

THIS FLOORPLAN IS NOT TO SCALE  
SIZES AND DIMENSIONS ARE APPROXIMATE, ACTUAL MAY VARY.



**CONTACT**

**Carolyn Graden, ccim**  
MANAGING BROKER  
(360) 763-4994  
carolyn@rantsgroup.com



rants.group/8613MartinWayE201vt

This information, while obtained from sources we deem reliable, is not guaranteed. It is provided without any representation, warranty or guarantee, expressed or implied as to its accuracy. Prospective buyer or tenant should conduct an independent investigation and verification of all matters deemed to be material, including, but not limited to, statements of income and expenses. Consult your attorney, accountant, or other professional advisor.

**360-943-8060 | RANTSGROUP.com**