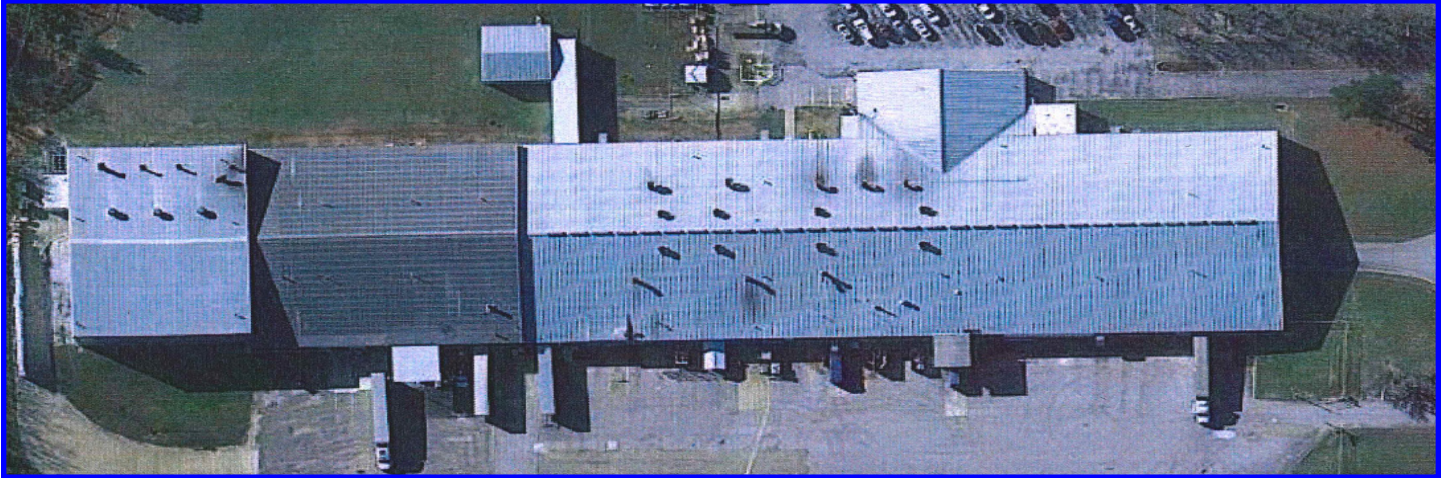


INDUSTRIAL BUILDING LOCATED IN A MID-SOUTH USA MANUFACTURING CLUSTER: TISHOMINGO COUNTY, MISSISSIPPI, USA

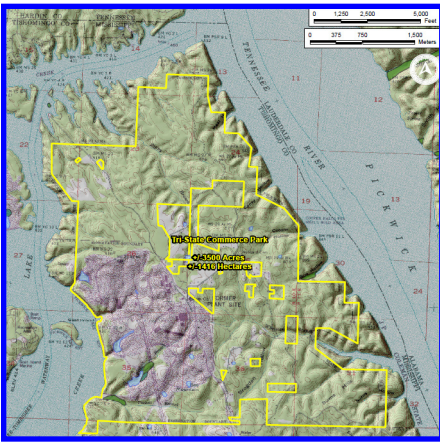


100,000+SF/9,290+SQM PUBLICLY OWNED INDUSTRIAL BUILDING. Located in Iuka Industrial Park, Iuka, Mississippi, USA, the NOVOLEX building has minimum 14' to 35' ceiling clearance, heavy electrical and natural gas infrastructure, sprinkler system, 2,650 SF of office space, four truck docks, two drive in doors, six ton bridge cranes, manufacturing area heated and ventilated, and flammable materials storage. Surrounded by earth berms on three sides and security fencing. Previously used for manufacturing of foiled back paper for insulation products. Rail spur can be reactivated. Foreign Trade Zone designation. Incentives available for job creating projects.

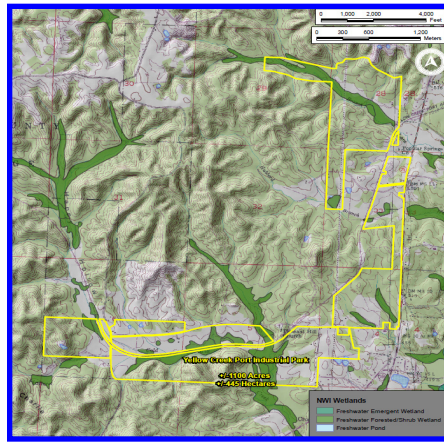


TISHOMINGO COUNTY, MISSISSIPPI, USA. Tishomingo County is a steel & composites fabrication and transportation parts manufacturing cluster. Tishomingo County ranks # 1 in the southeastern USA in manufacturing job creation per capita over the past ten years according to *Southern Business & Development*, the recognized authority on economic development in the USA South.

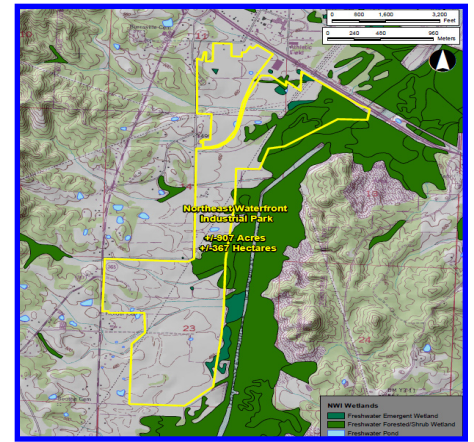
Manufacturing is the largest employer in Tishomingo County, five times the national average. Metal and composites fabrication, national defense manufacturing, and recreational vehicles are the largest employers.



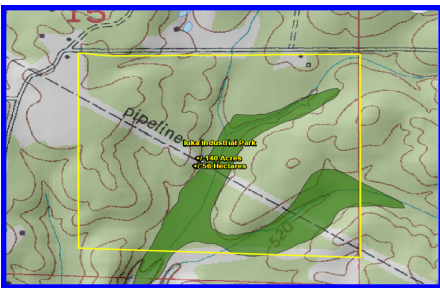
TRI-STATE COMMERCE PARK. 751 CR 989, Iuka, 3,500 acre/1,416 hectare county owned industrial complex with dual electric power, rail spur, barge dock, 24/7 security.



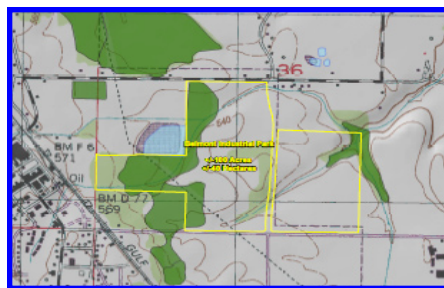
YELLOW CREEK PORT INDUSTRIAL SITES. 27 CR 342, Iuka, 1,100 acre/445 hectare port owned industrial park with rail and near port facilities.



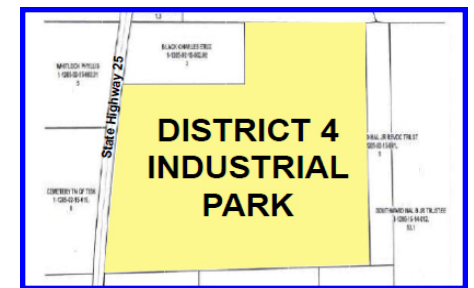
NORTHEAST MISSISSIPPI WATERFRONT INDUSTRIAL PARK. 56 CR 219, Burnsville, 1,000 acre/405 hectare port owned industrial park with barge dock, four lane highway, & rail spur.



IUKA INDUSTRIAL PARK. CR 234, Iuka, 140 acre/57 hectare city owned industrial park with municipal utilities. Federal Opportunity Zone. Gated entrance.



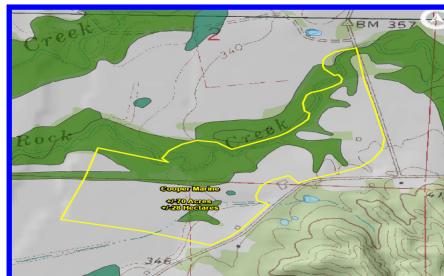
BELMONT INDUSTRIAL PARK. 85 Yarber Street, Belmont, 100 acre/40 hectare city owned industrial park with municipal utilities. Additional acreage may be available.



DISTRICT 4 INDUSTRIAL PARK. 1340 Highway 25, Tishomingo, approximately 35 acre/14 hectare county owned industrial park with municipal utilities.



TISHOMINGO INDUSTRIAL PARK. 1425 Highway 25, Tishomingo, 20 acre/8 hectare city owned industrial park with municipal utilities. Technical training center adjacent.



COOPER MARINE INDUSTRIAL PARK. 183 CR 1, Dennis, 90 & 70 acre/36 & 19 hectare privately owned sites on waterway and adjacent to a wood chip mill.



PCA SITE. Burnsville, 29 acre/11.7 hectare site on mainline rail and waterway owned by Packaging Corporation of America. Served by municipal utilities.

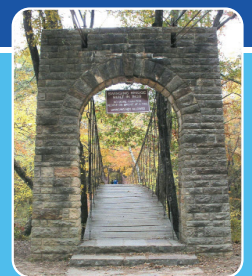
BEST OF THE NEW



Tishomingo County



BEST OF THE OLD



"Award Winning Public Private Partnership"

**Tishomingo County Development Authority
Tishomingo County Development Foundation
Tishomingo County Tourism Council**

www.tishomingo.org | www.tishomingofunhere.org

1001 Battleground Drive | Iuka, Mississippi 38852 USA | 662-423-9933 | 662-423-0051 | info@tishomingo.org