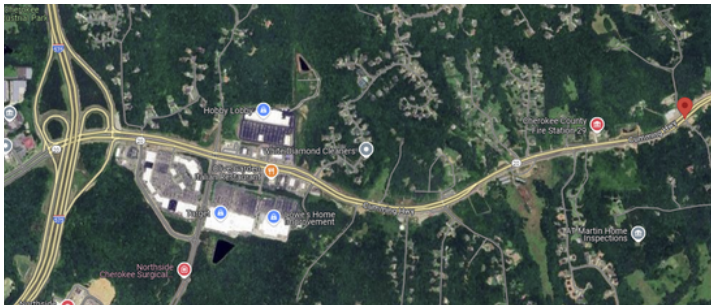


CUMMING HIGHWAY AND WHEELER MOUNTAIN ROAD



COMMERCIAL LAND PROPERTY FOR SALE

OFFERED AT **\$800,000**AREA **4.25 AC**

CUMMING HIGHWAY 1M EAST OF 575

PROPERTY DETAILS

Discover a prime location in a rapidly growing area. Situated right off of Highway 575, this property benefits from the ongoing expansion of State Highway 20. Enjoy increased visibility and accessibility as this thriving region continues to develop. With its strategic location and abundant growth potential, this property offers an exceptional opportunity for businesses seeking to capitalize on the area's rising popularity.

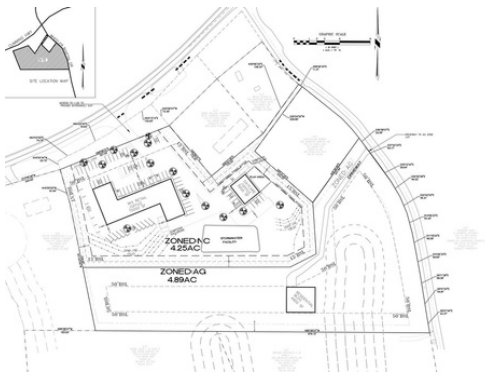
CONTACT US



MARK ELLSWORTH
MARK.ELLSWORTH@KW.COM
404.449.6275



SARAH BYRD
SARAHBYRD@KW.COM
404-324-1344



PROPERTY HIGHLIGHTS

- **4.5 acres zoned commercial septic**
- **Additional 4 acres zoned R-30 is available**
- **Sewer connection is 2500 feet away (approximate)**
- **Site plan approved for 18K feet of commercial space**
- **Located at corner of Wheeler Martin and Cumming Hwy**

CONTACT US



MARK ELLSWORTH
MARK.ELLSWORTH@KW.COM
404.449.6275



SARAH BYRD
SARAHBYRD@KW.COM
404-324-1344