

EastLake Village Center South

SWC Otoy Lakes Road & EastLake Parkway
Chula Vista, CA 91915

±1,200 SF (Former Restaurant)

VONS

2250



**±1,835 SF
AVAILABLE**

**FLOCKE &
AVOYER**

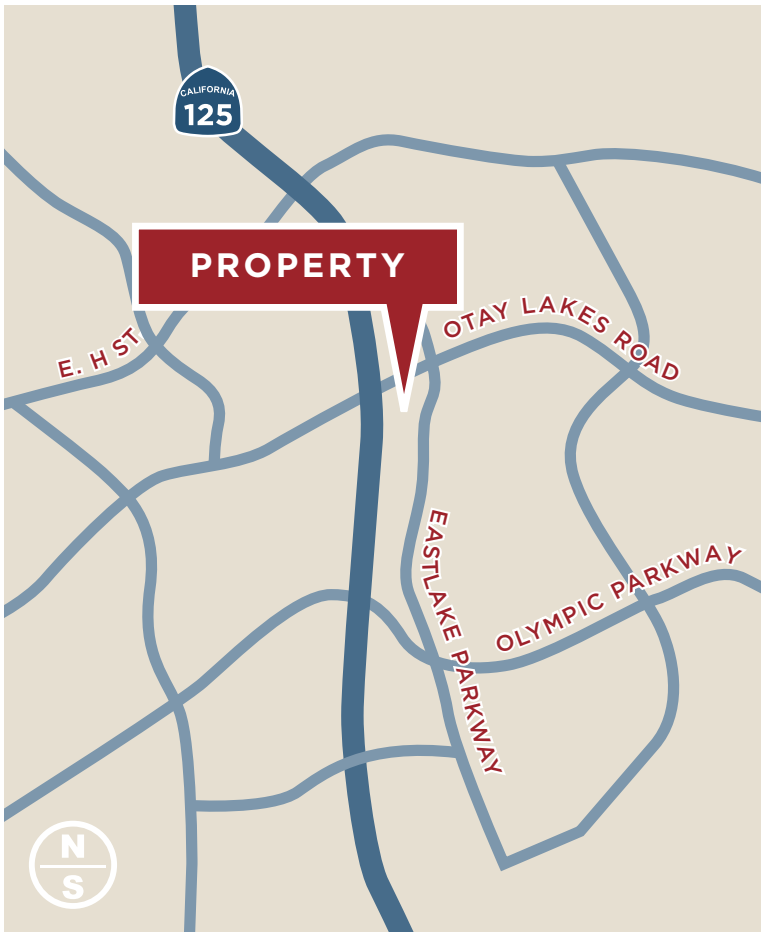
Commercial Real Estate

EastLake Village Center South

2210-2290 Otoy Lakes Road
Chula Vista, CA 91915

-
- Dominant grocery anchored center
 - Prominent intersection
 - Vons/Rite Aid anchored
-





PROPERTY DESCRIPTION

Anchored by Vons and Rite Aid, EastLake Village Center South is located in the middle of the dynamic EastLake community.

This is a rare opportunity for a shop space in the most dominant grocery-anchored center located at the main intersection in the EastLake community.



TRAFFIC COUNTS CARS PER DAY

OTAY LAKES ROAD: ±27,200
EASTLAKE PARKWAY: ±32,964



AVERAGE HHI*

1 MILE: \$133,934
3 MILES: \$137,268
5 MILES: \$127,701



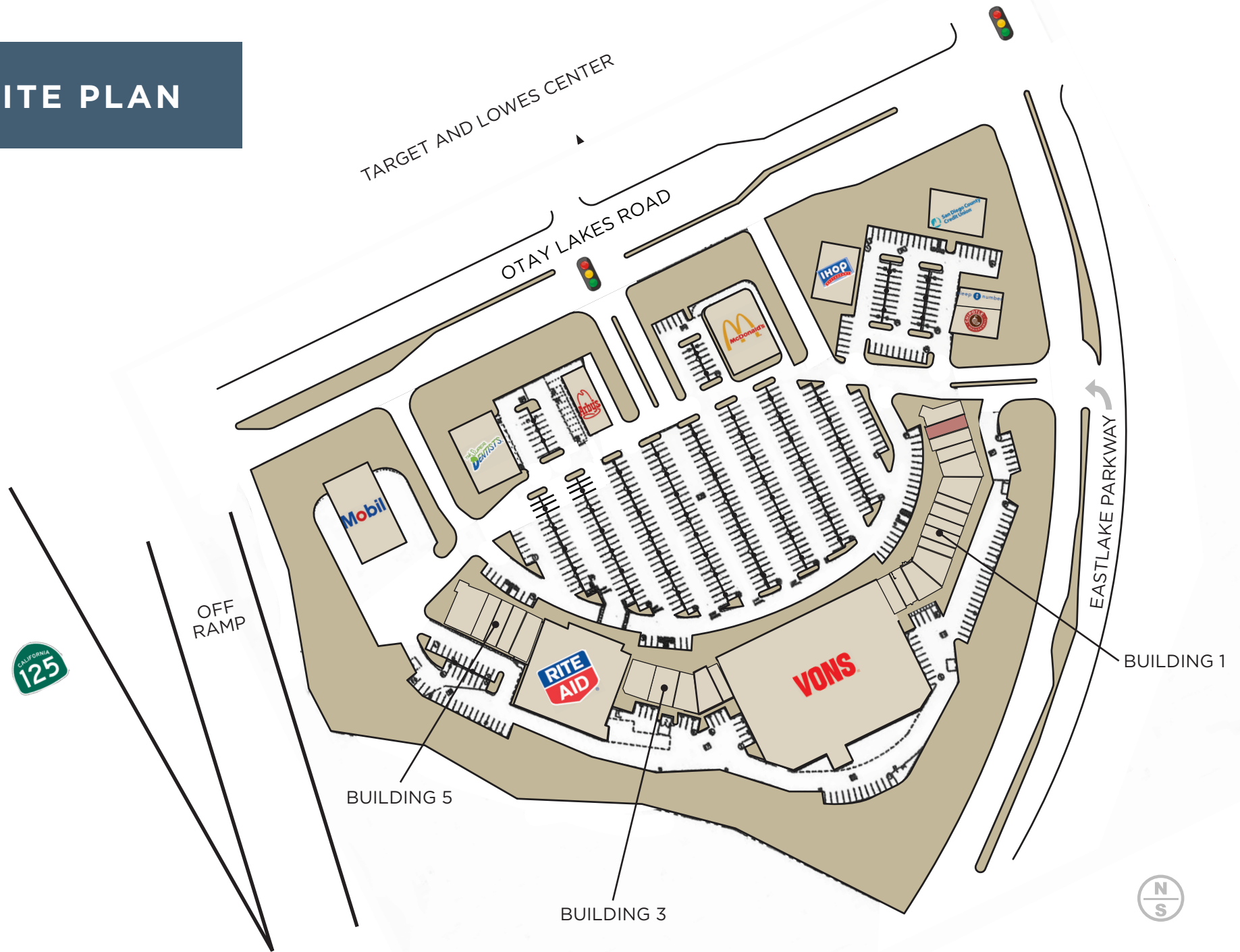
POPULATION

1 MILE: 19,822 / 13,723 (DAY)
3 MILES: 121,963 / 53,267 (DAY)
5 MILES: 213,404 / 107,681 (DAY)



**Demographics produced using private and government sources deemed to be reliable. The information herein is provided without representation or warranty. Additional information available upon request.*

SITE PLAN

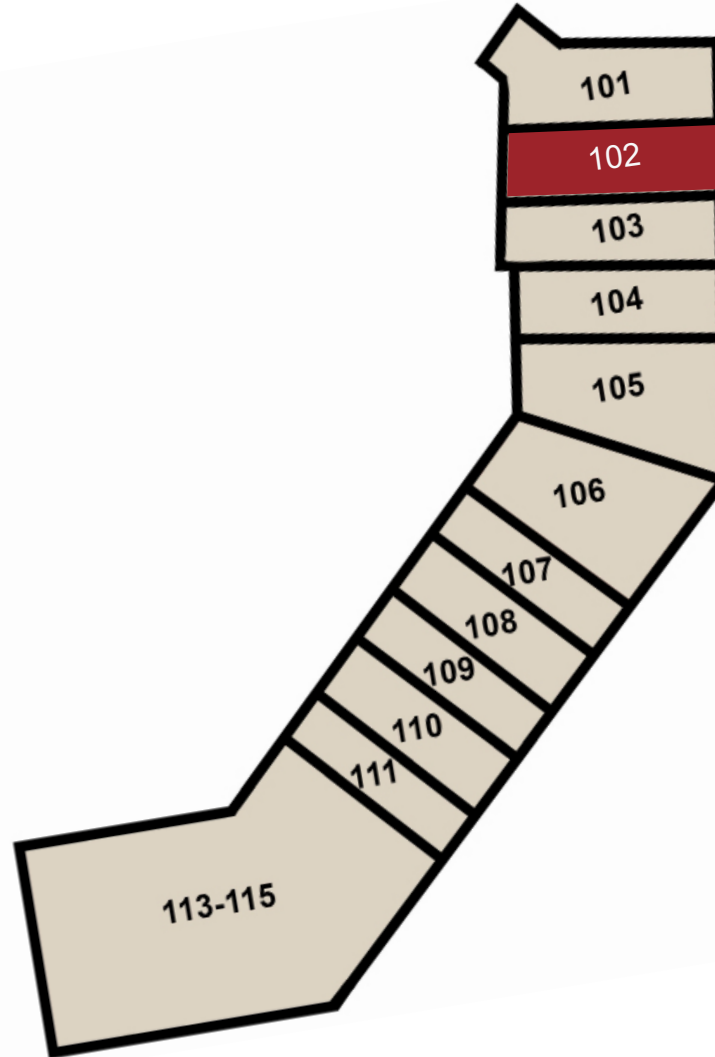


This site plan is not a representation, warranty or guarantee as to size, location, or identity of any tenant, and the improvements are subject to such changes, additions, and deletions as the architect, landlord, or any governmental agency may direct.

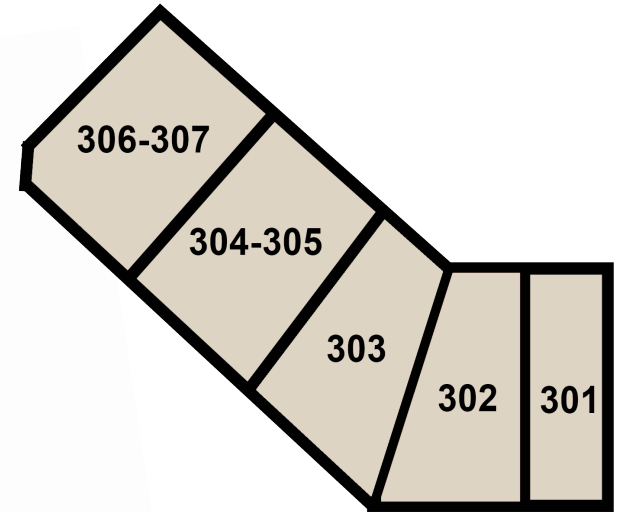
SITE PLAN

SUITE	TENANT	SF
101	Dunkin	1,732
102	POTENTIALLY AVAILABLE	1,200
103	Pansang's Filipino Cuisine	1,248
104	Panda Chef	1,248
105	L&L Hawaiian BBQ	1,792
106	F45 Fitness	1,953
107	VIP Nails & Spa	968
108	Flame Broiler	1,224
109	Baskin Robbins	982
110	Samuel Hayatt, DMD	1,224
111	Optometry EastLake Vision	968
112	Arya Cleaner	2,039
113-115	Veterinarian - Dr. Bischel	4,286
301	Studio MG Salon	1,205
302	Crumbl Cookies	1,823
303	Denki's Boba (Proposed)	1,823
304-305	Citibank	2,450
306-307	Realty Executives	2,537
501	Goodwill Bookstore	1,925
502	Postal Annex	1,188
503	HearUSA	1,120
504	H&R Block	1,330
505-506	Papagayos Grill	2,694

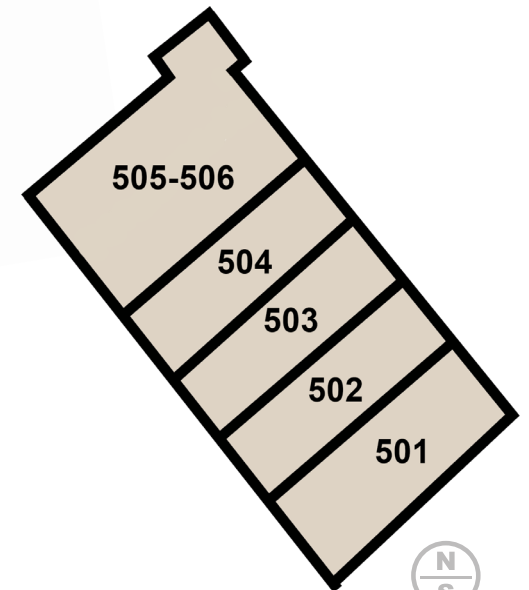
BUILDING 1



BUILDING 3

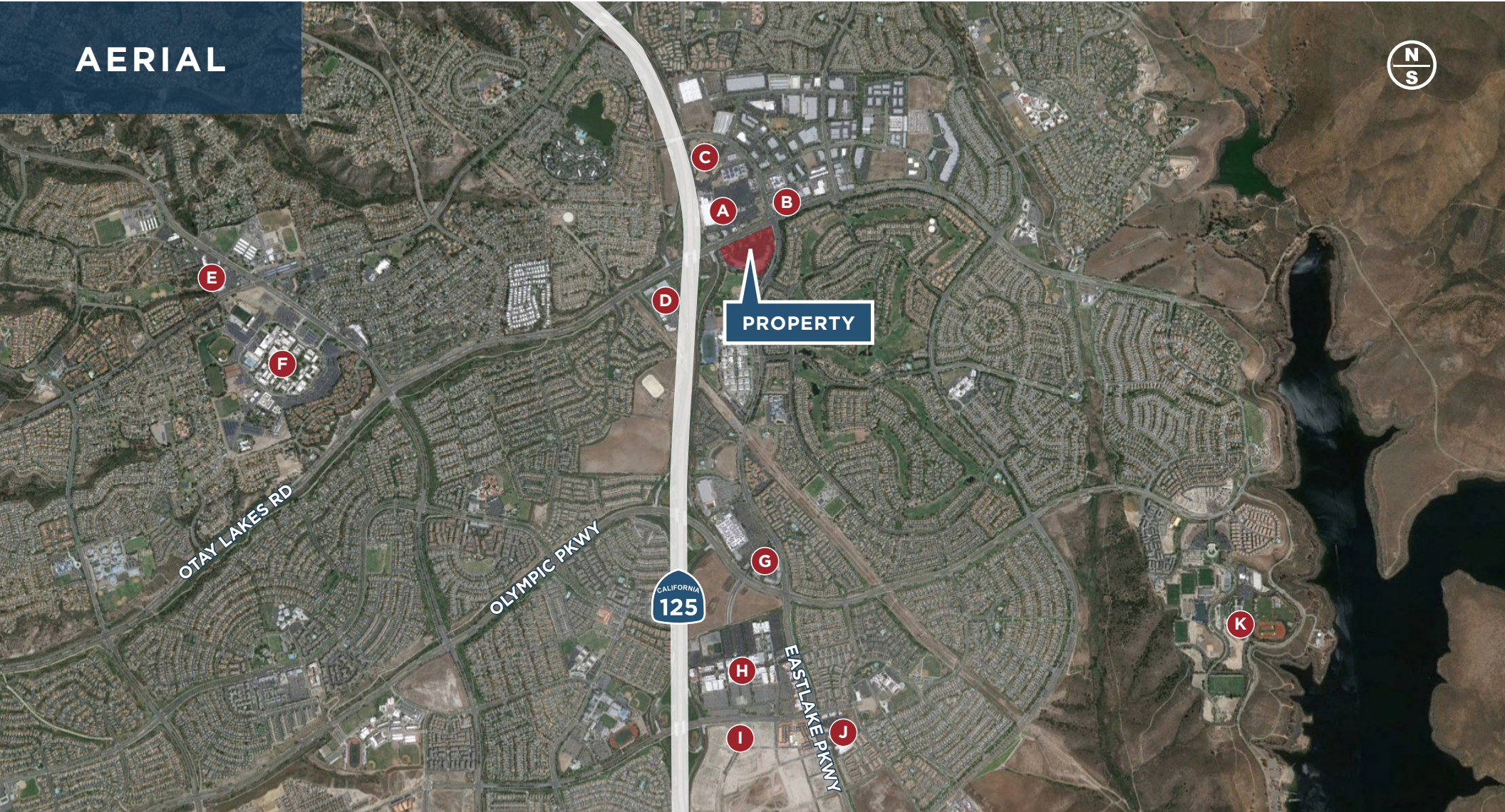


BUILDING 5



This site plan is not a representation, warranty or guarantee as to size, location, or identity of any tenant, and the improvements are subject to such changes, additions, and deletions as the architect, landlord, or any governmental agency may direct.

AERIAL



- A** Target, Lowe's, Bevmo, Office Depot
- B** Kohl's
- C** Sprouts, Trader Joes, TJ Maxx, CVS, Petco

- D** LA Fitness
- E** Ralph's, RiteAid
- F** Southwestern College
- G** Walmart, Home Depot, Walgreens

- H** AMC Theatres, Best Buy, Macy's
- I** Homegoods, Ross, Cost Plus, buybuyBaby
- J** Von's
- K** Chula Vista Elite Athlete Training Center

FOR MORE
INFORMATION

STEWART KEITH

858.875.4669

skeith@flockeavoyer.com

License ID: 01106365



Commercial Real Estate

6165 Greenwich Drive, Suite 110

San Diego CA, 92122

619.280.2600

flockeavoyer.com



All information regarding this property is deemed to be reliable, however, no representation, guarantee or warranty is made to the accuracy thereof and is submitted subject to errors, omissions, change of price rental, or withdrawal without notice.