

15 ACRE · BUILD-TO-SUIT OR LAY-DOWN YARDS

FOR SALE



For
Over **30** YEARS
Tradition Meets
Trust in CRE

634 CM RANCH RD, PECOS, TX 79772



LARRY NIELSEN
SENIOR VICE PRESIDENT
432.260.0088 CALL OR TEXT
LNIELSEN@TIGUSA.COM

CONTACT BROKER

15 Acres of raw land that can be subdivided at request. Owner can do a build-to-suit or simply stabilize and secure land for lay-down yards. Amenities are available at tenant request including power, utilities, fencing, rocked surface, and yard lighting.

- 15 AC Available for Lay-Down or BTS
- Available Amenities At Tenant Request:
 - Power
 - Water
 - Septic
 - Security Fencing
 - Rocked Surface
 - Yard Lighting

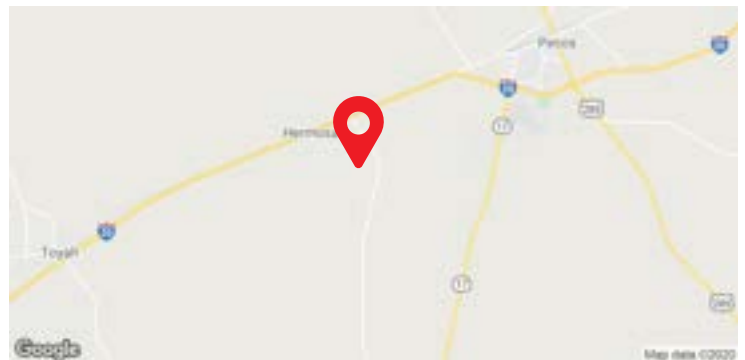
Available Acreage: 15 Acres
Sale Price: \$19,750.00 / Acre
Zoning: None





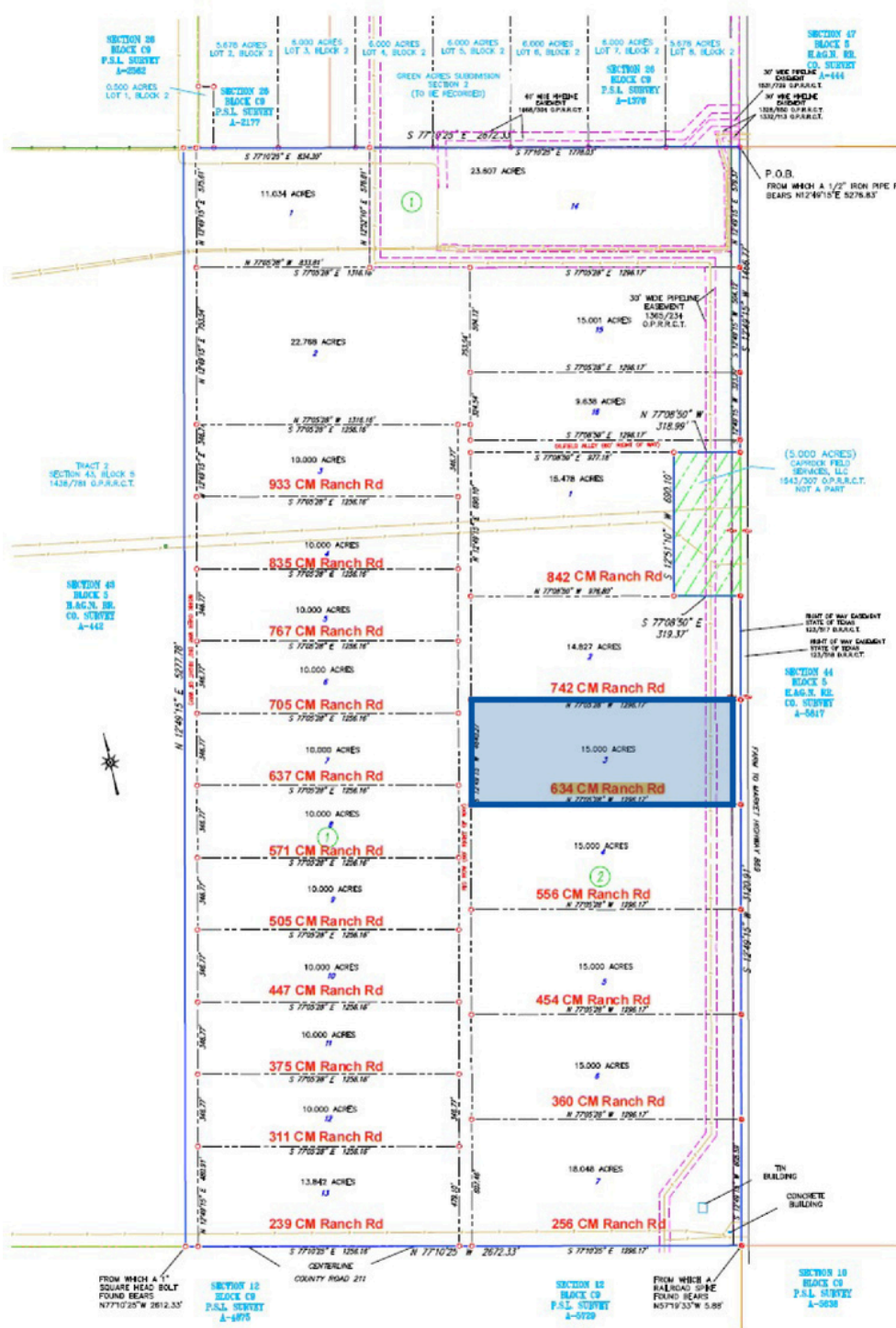
LOCATION OVERVIEW

This property is located 4 miles west of Pecos and approximately 2.8 miles south of I-20 on the west-side of FM 869. FM 869 provides easy access to I-20 which travels through the Delaware Basin.





SITE PLAN





SAMPLE BUILDING PHOTOS



