

# Interchange Business Center

1410 - 1440 Third Street, Riverside, CA

Call Today! 951.689.2301



Industrial Units Available: 840, 1,220 & 1,560 SF / Office Units Available: 1,150 SF



Map Not to Scale

- Immediate Access to 60, 91 and 215 Freeways
- Office Spaces Fronting Third Street
- Skylights in Warehouse
- Ground Level Loading Doors
- Individually Controlled Heating and Air Conditioning Systems
- 3-Phase Power
- Fire Sprinklered
- BMP Zoning

Contact Info: (951) 689-2301

Todd Peterson CA BRE #00829137

Email: [tpeterson@wilsonps.net](mailto:tpeterson@wilsonps.net)

Leasing Office:

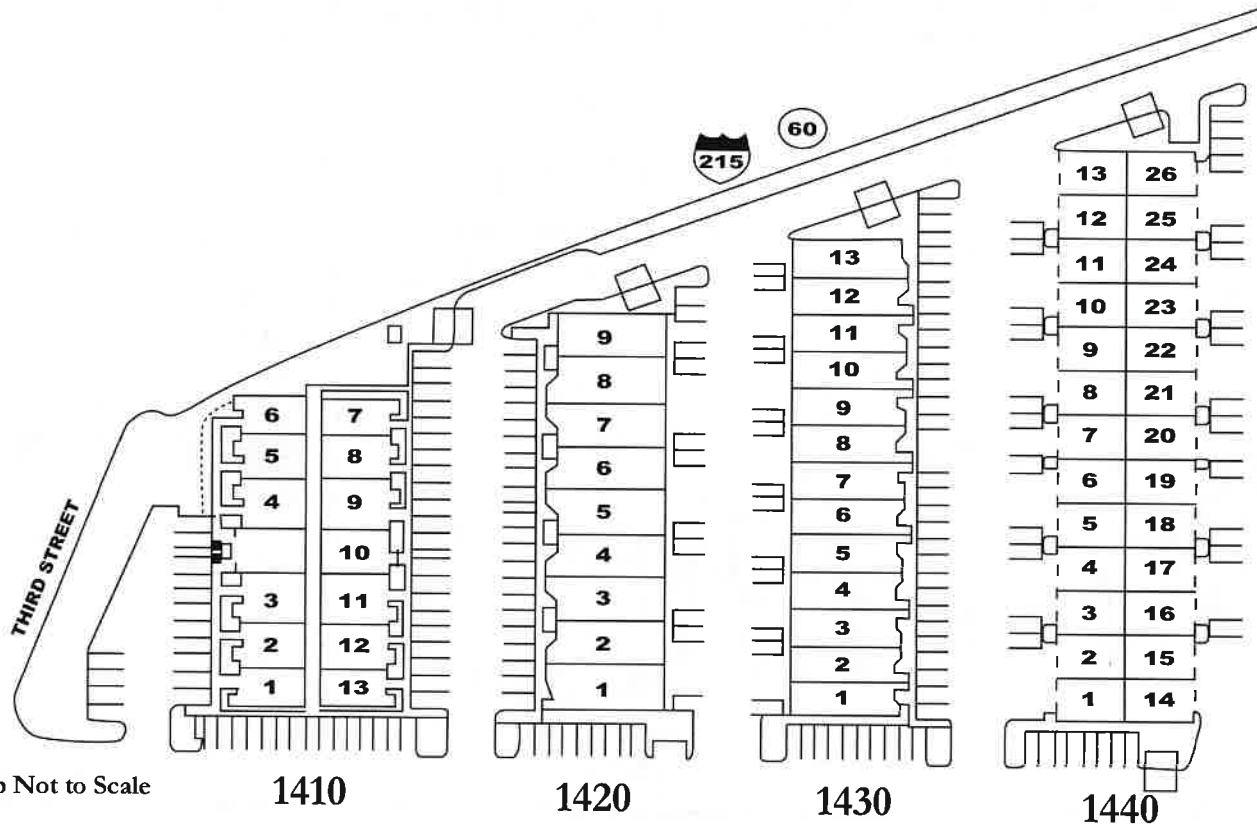
11860 Magnolia Ave. Suite H

Riverside, CA 92503

Hours: 9:00 - 5:00 (Monday-Friday)

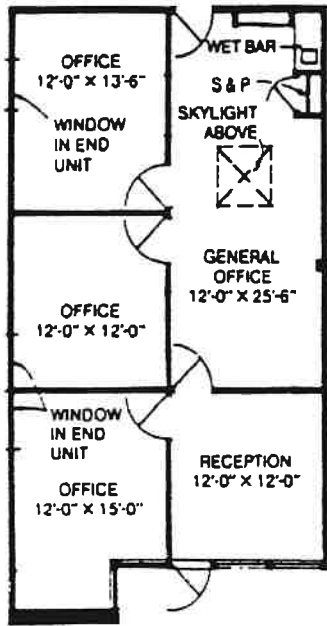


WILSON PROPERTY  
SERVICES, INC.

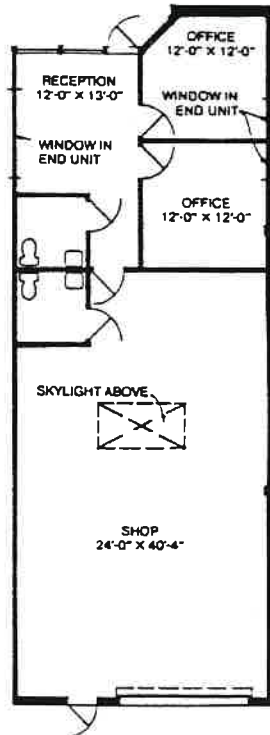


\* Map Not to Scale

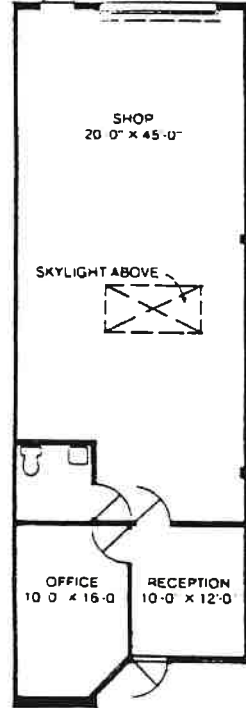
1410 Building  
13 Office Spaces  
1,150 SF Each



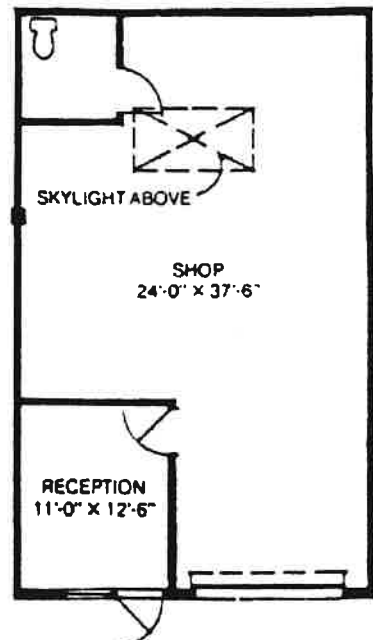
1420 Building  
9 Industrial Spaces  
1,560 SF Each



1430 Building  
13 Industrial Spaces  
1,220 SF Each



1440 Building  
26 Industrial Spaces  
840 SF Each



Although reasonable efforts have been taken to verify information, no guarantees are made as to the accuracy of the data provide. The reviewer is encouraged to perform an independent analysis.