



Laundry
Studios s
with Oneder

A space for Hackney, in Hackney

Join the community

LONDON FIELDS HACKNEY, E8

LONDON FIELDS IS A UNIQUE AND CREATIVE NEIGHBOURHOOD IN THE HEART OF HACKNEY.

Known for its artistic vibe and independent spirit, it has become a hub for creatives and entrepreneurs.

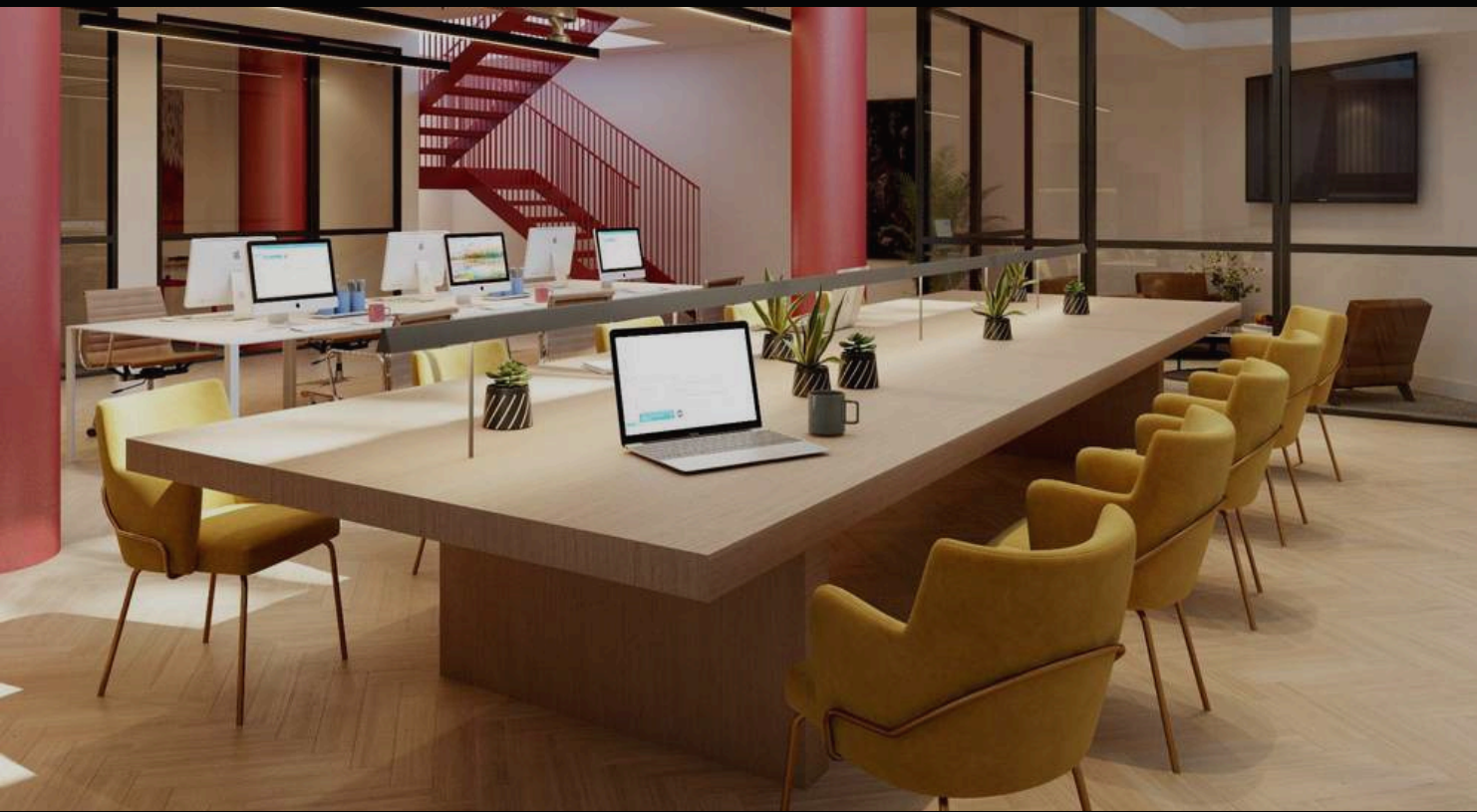
While Hackney has an industrial past, London Fields brings a refreshing, modern energy through its independent cafés, shops and cultural venues. There is no shortage of inspiration and opportunity in this vibrant area of East London.



Laundry Studios

Mentmore Terrace, E8

Opening Q1 2025



Laundry Studios

Offering:

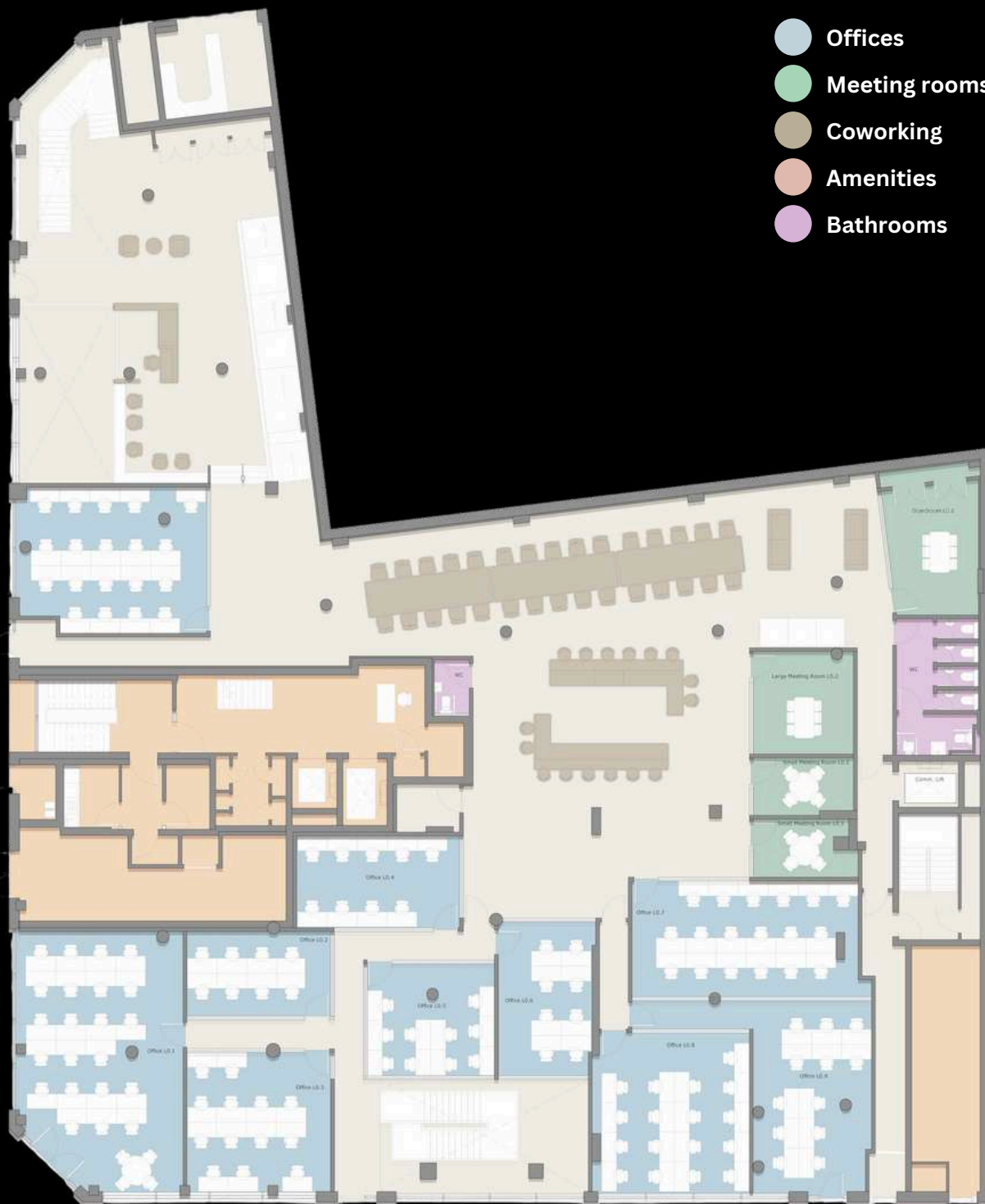
16 Beautifully designed private offices:
6 – 30 desks from £250 +VAT per desk (all inclusive)

Fully-furnished, lockable and customisable offices,
all with AC, 24/7 access, premium wifi, mail room,
complimentary meeting room credits, on-site team
and use of all shared communal space.

Within 20,000 SQ FT of
BREEAM excellent office space.



- Offices
- Meeting rooms
- Coworking
- Amenities
- Bathrooms

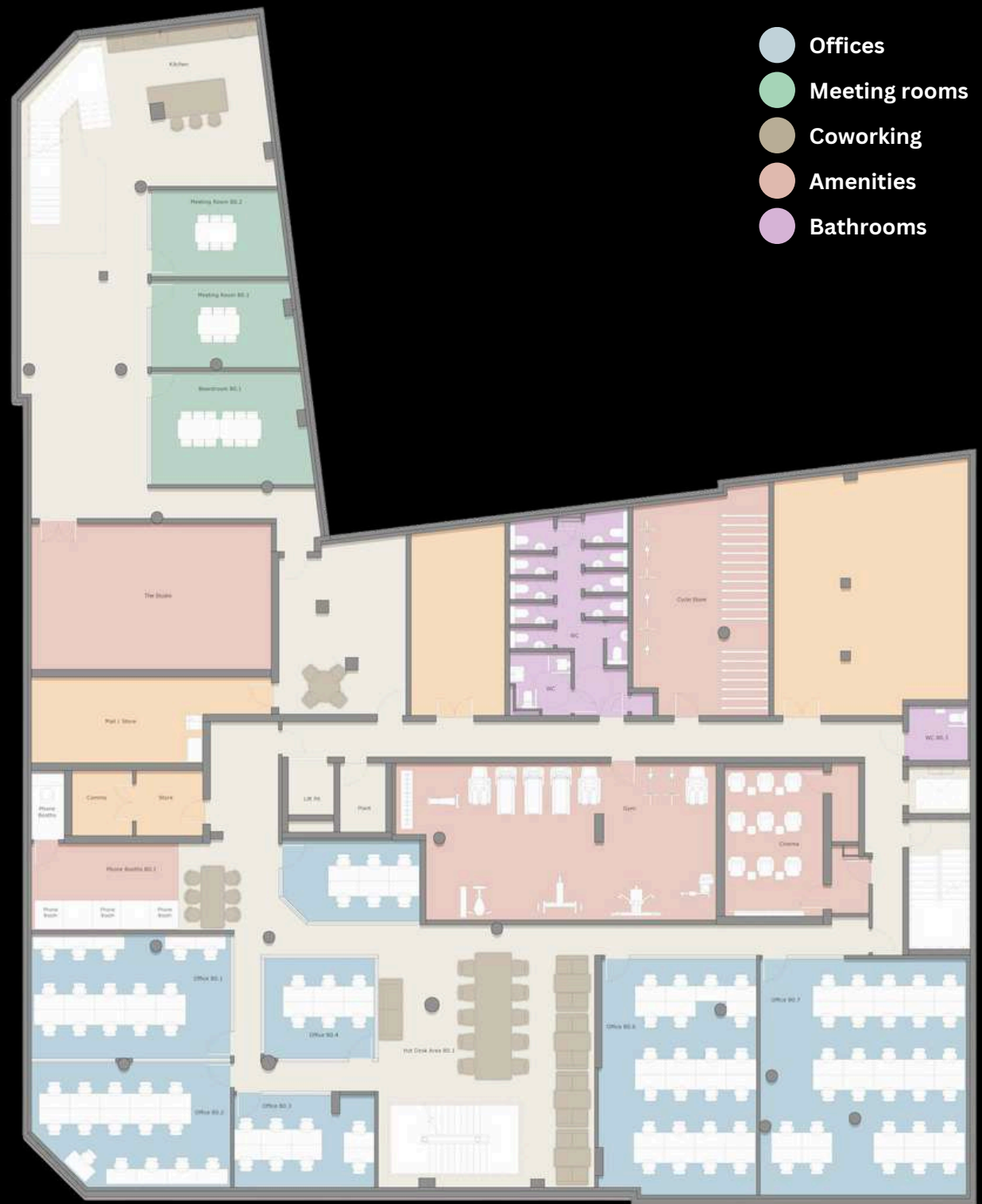


GROUND FLOOR AVAILABILITY

- 8 DESKS - G-106: £3,600
- 8 DESKS - G-102: £3,600
- 9 DESKS - G-104: £4,050
- 10 DESKS - G-105: £4,500
- 12 DESKS - G-109: £5,400
- 13 DESKS - G-103: £5,850
- 17 DESKS - G-108: £7,650
- 18 DESKS - G-107: £8,100
- 22 DESKS - G-101: £9,900

LOWER GROUND AVAILABILITY

- 6 DESKS - LG-104: £2,100
- 6 DESKS - LG-105: £2,100
- 8 DESKS - LG-103: £2,800 (SOLD)
- 15 DESKS - LG-101: £5,250
- 15 DESKS - LG-102: £5,250
- 23 DESKS - LG-106: £5,750
- 30 DESKS - LG-107: £7,500



Laundry Studios

The added extras:



Gym



Meeting Rooms



Screening Room



24/7 Access



Lounge Areas



Dog Friendly



Phone Booths



Onsite Team



Showers



Bike Storage



Event Space



Mail Room

All within the **ICONIC** Laundry,
London Fields



More than a space...



Gym



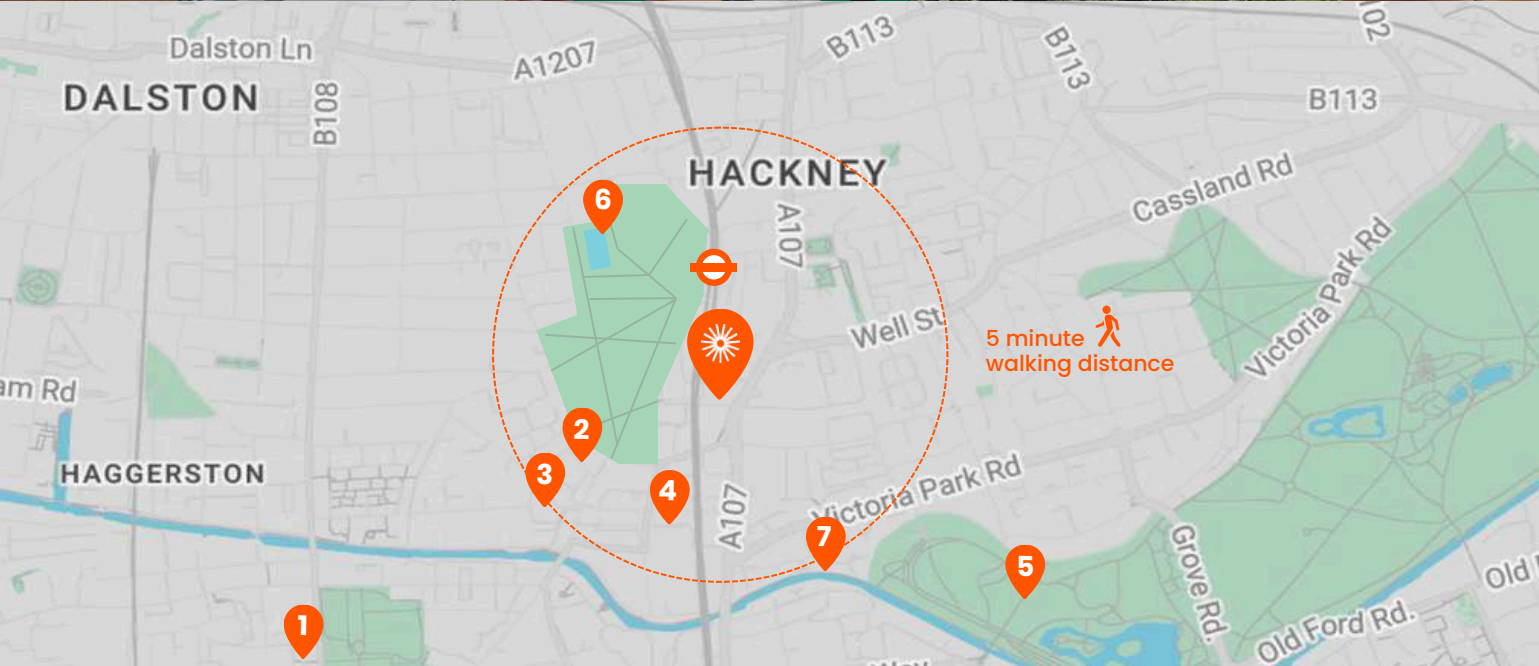
Community Event Space



Screening Room

Sustainability

Laundry Studios is a brand new BREEAM Excellent building designed and built with sustainability in mind. During development, 99.93% of waste was diverted from landfill and over 31 tonnes of carbon was saved. With solar panels, 100% responsibly sourced FSC timber, a biodiverse roof and bat boxes installed during construction – sustainability is at the heart of the space.



TRANSPORT:

- 🚶 1 minute walk to London Fields OVERGROUND
 - Bethnal Green 4 minutes
 - Stoke Newington 6 minutes
 - Liverpool Street 9 minutes
- 🚇 UNDERGROUND from Bethnal Green
 - Stratford 5 minutes
 - Bank 5 minutes
 - Oxford Circus 13 minutes

CHECK OUT:

1. Columbia Rd. Flower Market
2. Climpson & Sons
3. L'eau à La Bouche
4. Netil Market
5. Victoria Park Market
6. London Fields Lido
7. Regent's Canal



Laundry Studios

with Oneder

Mentmore Terrace, E8

Opening Q1 2025

SAY HELLO...

- 📞 020 8050 3325
- ✉️ sales@withoneder.com
- 🌐 withoneder.com

THE TEAM

Sogol Joudi

- 📞 07864 716 819
- ✉️ sogol@withoneder.com

David Kaiser

- 📞 07861 396 647
- ✉️ david@withoneder.com

