



396 REMINGTON BLVD

BOLINGBROOK



MEDICAL OFFICE LEASE OPPORTUNITY AVAILABLE

Property Highlights

Directly connected to care, Bolingbrook Medical Center offers 73,544 SF of premier medical office space, located adjacent to AdventHealth, a key facility within the UChicago Medicine Health System.



MEDICAL OFFICE SUITES AVAILABLE



5/1,000 PARKING RATIO



3 MINUTES FROM FULL I-55 INTERCHANGE



ON-SITE FOOD SERVICE

KAROLINE EIGEL

+1 312 470 2302

Karoline.Eigel@cushwake.com

JOSH CRANE

+1 312 424 8151

Josh.Crane@cushwake.com

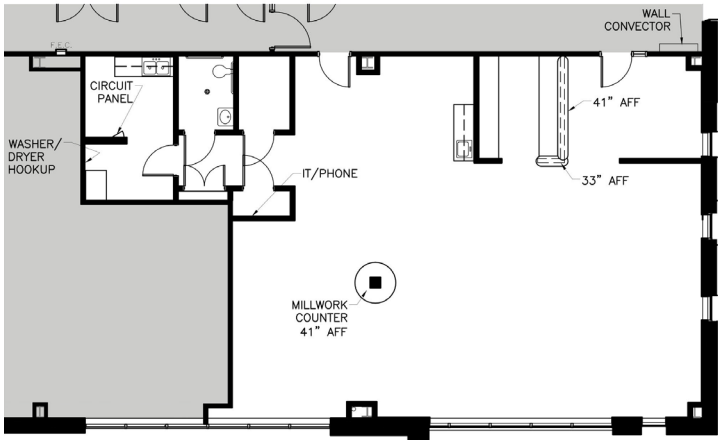
healthpeakportfolioil.com



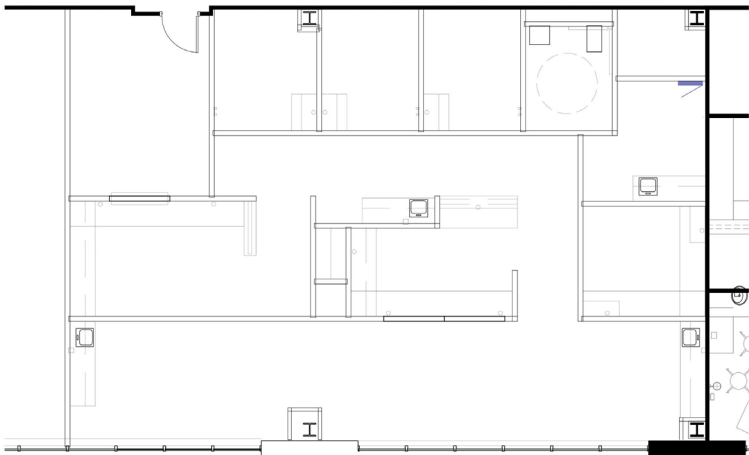
Healthpeak® | DOC LISTED NYSE

Available Space

SUITE 100 | 2,141 RSF



SUITE 330 | 2,205 RSF





Proximity With Purpose

With 6,285 SF of medical office space located immediately adjacent to AdventHealth and 3 minutes from the I-55 interchange, Bolingbrook Medical Center delivers the ideal address for healthcare providers connected to the UChicago Medicine Health System.



KAROLINE EIGEL

+1 312 470 2302

Karoline.Eigel@cushwake.com

JOSH CRANE

+1 312 424 8151

Josh.Crane@cushwake.com

healthpeakportfolioil.com



Healthpeak® | DOC
LISTED
NYSE

©2025 Cushman & Wakefield. All rights reserved. The information contained in this communication is strictly confidential. This information has been obtained from sources believed to be reliable but has not been verified. NO WARRANTY OR REPRESENTATION, EXPRESS OR IMPLIED, IS MADE AS TO THE CONDITION OF THE PROPERTY (OR PROPERTIES) REFERENCED HEREIN OR AS TO THE ACCURACY OR COMPLETENESS OF THE INFORMATION CONTAINED HEREIN, AND SAME IS SUBMITTED SUBJECT TO ERRORS, OMISSIONS, CHANGE OF PRICE, RENTAL OR OTHER CONDITIONS, WITHDRAWAL WITHOUT NOTICE, AND TO ANY SPECIAL LISTING CONDITIONS IMPOSED BY THE PROPERTY OWNER(S). ANY PROJECTIONS, OPINIONS OR ESTIMATES ARE SUBJECT TO UNCERTAINTY AND DO NOT SIGNIFY CURRENT OR FUTURE PROPERTY PERFORMANCE.