

INDUSTRIAL PROPERTY FOR LEASE

2120 Walnut St, Jacksonville, FL 32206



OFFERING SUMMARY

| | |
|-----------------|-------------------------------------------------------|
| Space Available | 1,000 - 15,000± SF |
| Zoning | IL |
| Dock Doors | Three |
| Drive-In Bay | One |
| Ceiling Height: | 16'± |
| Lease Rate: | Negotiable based off the amount of SF needed |
| Zoning: | IL |

PROPERTY OVERVIEW

Nestled in the bustling industrial district of Jacksonville, the property at 2120 Walnut Street offers a versatile and spacious industrial lease opportunity. Spanning between 1,000 to 15,000 square feet with IL zoning, this property is ideally suited for a wide range of industrial and commercial activities. It features three exterior loading doors, a loading bay, and an impressive 16' ceiling height, catering to efficient operational flow. Tenants benefit from 24-hour access and robust security, ensuring business operations can run smoothly around the clock. The facility's 20x20 column spacing provides an open and adaptable space, while the availability of warehouse equipment like forklifts, pallet jacks, and dollies enhances operational efficiency. Tailored to meet the diverse needs of businesses, the rent structure is flexible and based on the amount of space required, making it an ideal location for enterprises seeking a strategic and flexible industrial space in Jacksonville.



Mark Wainwright

904.398.1044 / mwainwright@pinestreetrps.com

Pine Street/RPS / 904.398.1044 / 2650-2 Rosselle Street, Jacksonville, FL 32204 / pinestreetrps.com

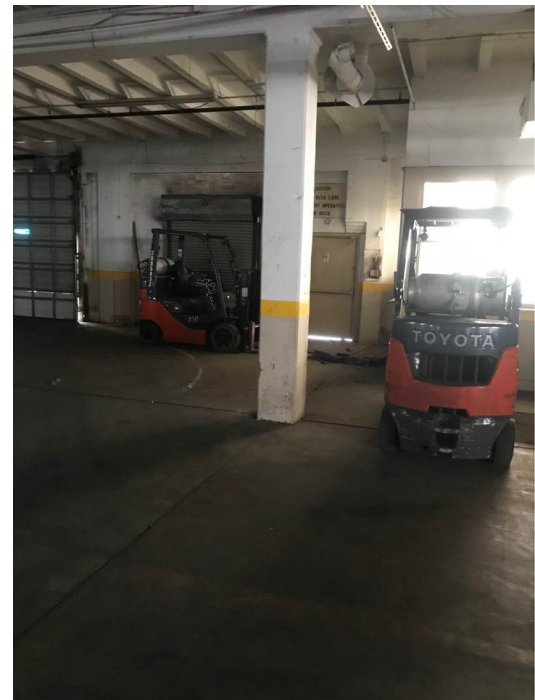
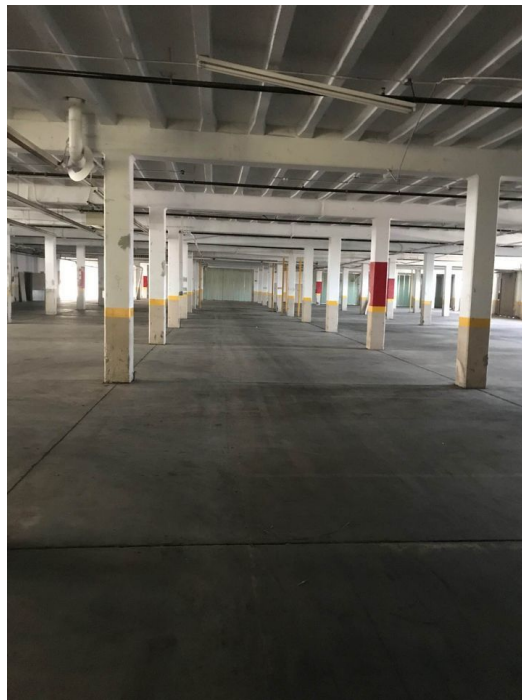
Information provided is deemed accurate, but subject to errors and/or omissions.



Pine Street / RPS

INDUSTRIAL PROPERTY FOR LEASE

2120 Walnut St Jacksonville, FL 32206



Mark Wainwright

904.398.1044 / mwainwright@pinestreetrps.com

Pine Street/RPS / 904.398.1044 / 2650-2 Rosselle Street, Jacksonville, FL 32204 / pinestreetrps.com

Information provided is deemed accurate, but subject to errors and/or omissions.



Pine Street / RPS