



FOR LEASE: COMMERCIAL PROPERTY

60 Trade Road Plattsburgh, NY 12901

CALL FOR DETAILS

PRESENTED BY:
CDC REAL ESTATE INC.
30 BRIDGE ROAD SUITE 111 ROUSES POINT, NY 12979
800-545-8125 WWW.CDCREALESTATE.COM
LICENSED NYS BROKER

Executive Summary

60 Trade Road Plattsburgh, NY 12901

Located in the Town of Plattsburgh, where many retail- service and manufactures businesses call home.

This site is meticulously fit-up for a sales or service operation. This I-87 adjacent site is ideally located for any business looking for a visible location with the ease of access from I-87 and Route 374. As well as several other well travelled routes. T

his site has housed a very successful Caterpillar operation and most recently a RV Sales business.

The exterior and interior of this building are well fit-up to impress any customers coming to your place of business. And the fenced-in yard can accommodate either your rolling inventory and/or your service fleet.

Feel free to call or write CDC Real Estate with any questions you may have.

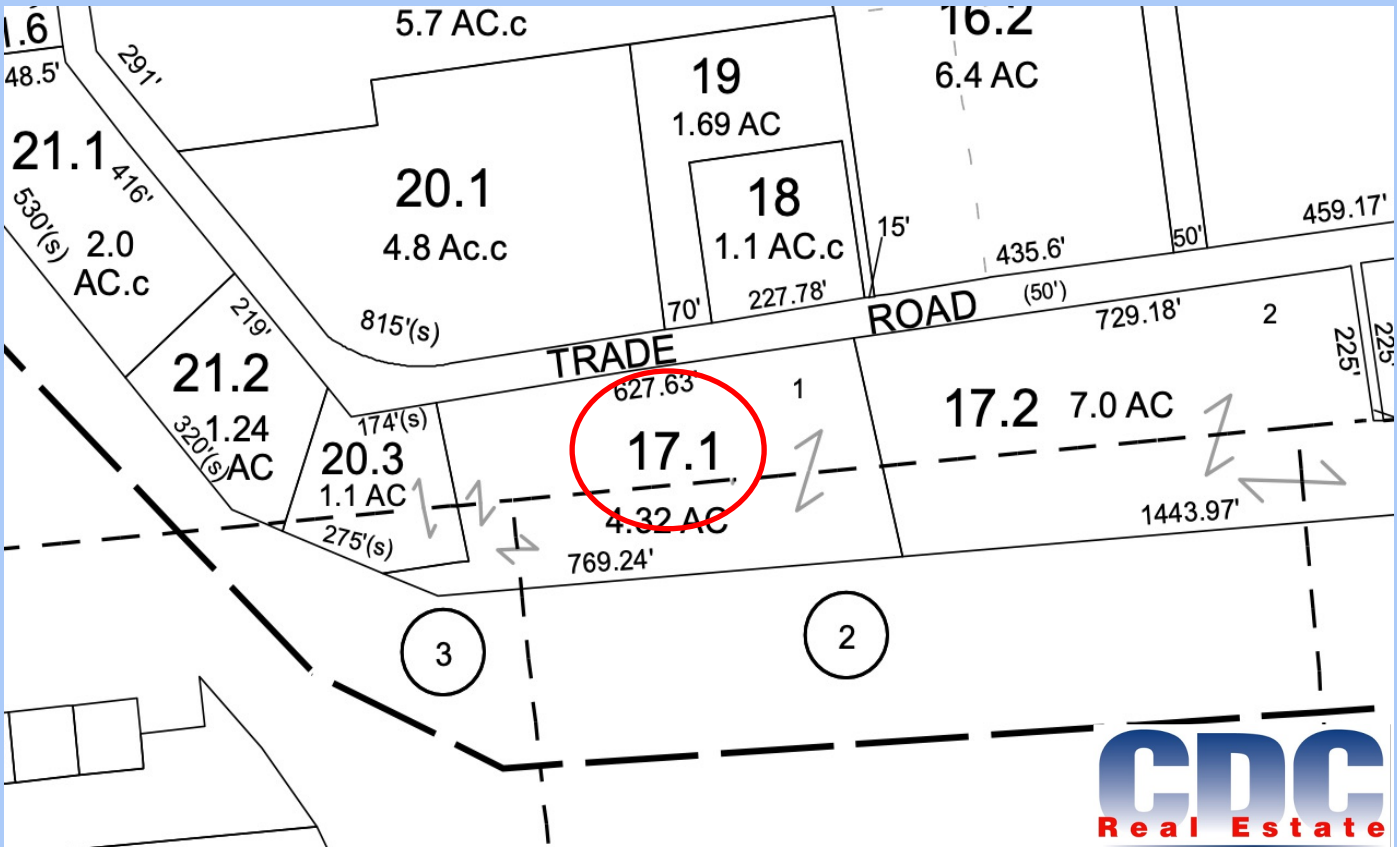
PRESENTED BY:
CDC REAL ESTATE INC.
30 BRIDGE ROAD SUITE 111 ROUSES POINT, NY 12979
800-545-8125 WWW.CDCREALESTATE.COM
LICENSED NYS BROKER

PROPERTY DETAILS

- Up to 11,200 +/- SF of show-room/floor space
- Includes 2,000 +/- SF of office space
- Located in the Town of Plattsburgh
- (2) 14' OH- drive thru doors
- (1) 14' OH door
- 18'6" +/- ceiling height
- Municipal water and sewer
- Natural gas
- Forced air heat and air Conditioning
- Updated LED lighting
- Mostly fenced in yard also available for lease
- Large parking area
- Zoned Industrial



AERIAL MAPS



FLOOR PLAN



PRESENTED BY:



30 Bridge Road Suite 111 Rouses Point, NY 12979

PH: 800-545-8125 FX: 518-297-3264

www.cdcrealestate.com

Licensed NYS Broker



Matthew T. Boire

Licensed NYS Broker

Matt@cdcrealestate.com



Alexandra L. Barie

Licensed NYS Assoc. Broker

Alex@cdcrealestate.com