



Keegan & Coppin
COMPANY, INC.

SALE/LEASE

THE COPPER-TOP BUILDING
100 BRUSH CREEK RD, SANTA ROSA, CA

HIGH-IDENTITY OFFICE OWNER/
USER OPPORTUNITY

Go beyond broker.

PRESENTED BY:

BRIAN KEEGAN, PARTNER
LIC # 01809537 (707) 528-1400, EXT 249
BKEEGAN@KEEGANCOPPIN.COM

KEVIN FLAHERTY, BROKER ASSOCIATE
LIC # 01855674 (707) 528-1400 EXT. 246
KFLAHERTY@KEEGANCOPPIN.COM





EXECUTIVE SUMMARY



THE COPPER-TOP BUILDING
100 BRUSH CREEK ROAD
SANTA ROSA, CA

FOR SALE/LEASE

Available for owner/user to occupy entire building!

100 Brush Creek Road, also known as the "Copper-Top" building, is a two-story office building in east Santa Rosa. The building is configured as a multi-tenant office building with an anchor suite upstairs and three separate suites downstairs. The lot is beautifully landscaped with mature trees in a welcoming setting.

Situated on the high-identity signalized intersection of Highway 12 and Brush Creek Road in Rincon Valley. The location provides easy access to Downtown Santa Rosa as well as the Fountaingrove Parkway. The property sits along Brush Creek and has a scenic trail that runs along the property and continues on to where Brush Creek joins Santa Rosa Creek.

LEASE RATE

\$1.75 psf/Month - Full Service

LEASE TERMS

3-5 Year Lease

OFFERING

Sale Price	\$1,395,000
Price PSF	\$183.84+/-



PRESENTED BY:

BRIAN KEEGAN, PARTNER
KEEGAN & COPPIN CO., INC.
LIC # 00835502 (707) 528-1400, EXT 249
BKEEGAN@KEEGANCOPPIN.COM

KEVIN FLAHERTY, BROKER ASSOCIATE
KEEGAN & COPPIN CO., INC.
LIC # 01855674 (707) 528-1400, EXT. 246
KFLAHERTY@KEEGANCOPPIN.COM

The above information, while not guaranteed, has been secured from sources we believe to be reliable. Submitted subject to error, change or withdrawal. An interested party should verify the status of the property and the information herein.

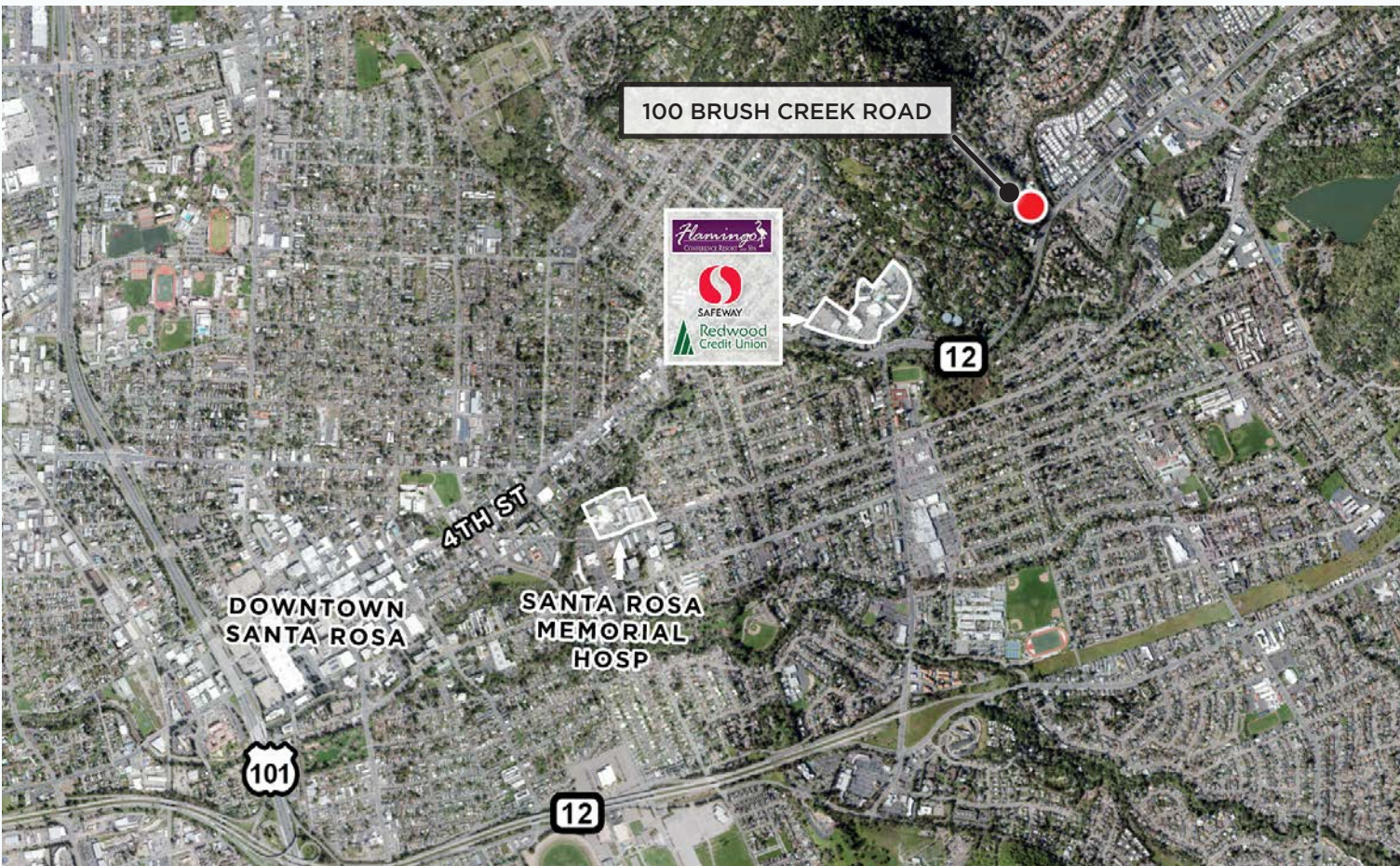


PROPERTY DESCRIPTION



THE COPPER-TOP BUILDING
100 BRUSH CREEK ROAD
SANTA ROSA, CA

FOR SALE/LEASE



BUILDING SIZE

7,588+/- SF

LOT SIZE

.283+/- Acres

APN

182-380-030

YEAR BUILT

1983

ZONING

CO-SR Office Commercial

STORIES

Two (2)

PARKING

23 On-Site

PRESENTED BY:

BRIAN KEEGAN, PARTNER
KEEGAN & COPPIN CO., INC.
LIC # 00835502 (707) 528-1400, EXT 249
BKEEGAN@KEEGANCOPPIN.COM

KEVIN FLAHERTY, BROKER ASSOCIATE
KEEGAN & COPPIN CO., INC.
LIC # 01855674 (707) 528-1400, EXT. 246
KFLAHERTY@KEEGANCOPPIN.COM

The above information, while not guaranteed, has been secured from sources we believe to be reliable. Submitted subject to error, change or withdrawal. An interested party should verify the status of the property and the information herein.



FINANCIAL OVERVIEW: RENT ROLL



THE COPPER-TOP BUILDING
100 BRUSH CREEK ROAD
SANTA ROSA, CA

FOR SALE/LEASE

	Tenant	Suite#	+/- SQFT	Rent/Mo.	Lease Expiration	Option(s)
1	Dr. Carter*	100	2,002	\$3,278.18	1/31/26	None
2	Vacant	101	959	0	-	None
3	Vacant	102	996	0	-	None
4	Ross	206	2,430	\$3,198.00	Mo./Mo.	None
5	Vacant	207	1,201	\$0	-	None
MONTHLY TOTAL				\$9,498.18		
ANNUAL TOTAL				\$113,978.16		

*Will consider lease termination.

PRESENTED BY:

BRIAN KEEGAN, PARTNER
KEEGAN & COPPIN CO., INC.
LIC # 00835502 (707) 528-1400, EXT 249
BKEEGAN@KEEGANCOPPIN.COM

KEVIN FLAHERTY, BROKER ASSOCIATE
KEEGAN & COPPIN CO., INC.
LIC # 01855674 (707) 528-1400, EXT. 246
KFLAHERTY@KEEGANCOPPIN.COM

The above information, while not guaranteed, has been secured from sources we believe to be reliable. Submitted subject to error, change or withdrawal. An interested party should verify the status of the property and the information herein.



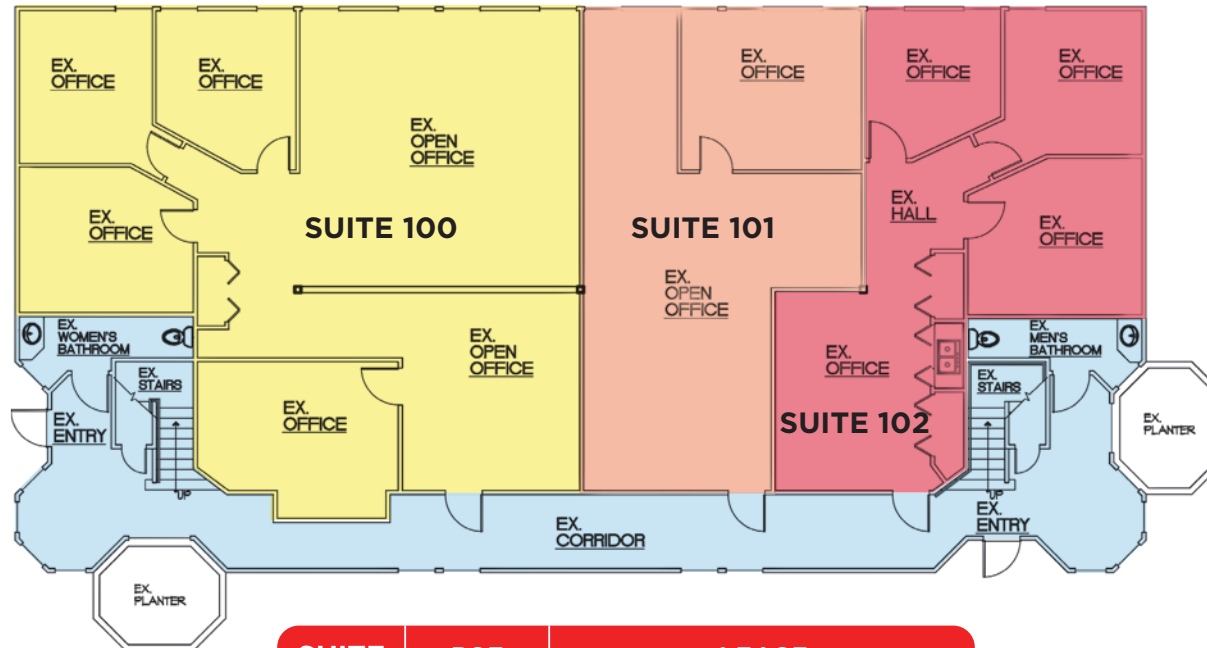
FLOOR PLANS



THE COPPER-TOP BUILDING
100 BRUSH CREEK ROAD
SANTA ROSA, CA

FOR SALE/LEASE

FIRST FLOOR



SUITE	RSF	LEASE
100*	2,002+/-	Leased Through 1/31/2026*
101	959+/-	Vacant
102	996+/-	Vacant

*Will consider lease termination.

PRESENTED BY:

BRIAN KEEGAN, PARTNER
KEEGAN & COPPIN CO., INC.
LIC # 00835502 (707) 528-1400, EXT 249
BKEEGAN@KEEGANCOPPIN.COM

KEVIN FLAHERTY, BROKER ASSOCIATE
KEEGAN & COPPIN CO., INC.
LIC # 01855674 (707) 528-1400, EXT. 246
KFLAHERTY@KEEGANCOPPIN.COM

The above information, while not guaranteed, has been secured from sources we believe to be reliable. Submitted subject to error, change or withdrawal. An interested party should verify the status of the property and the information herein.



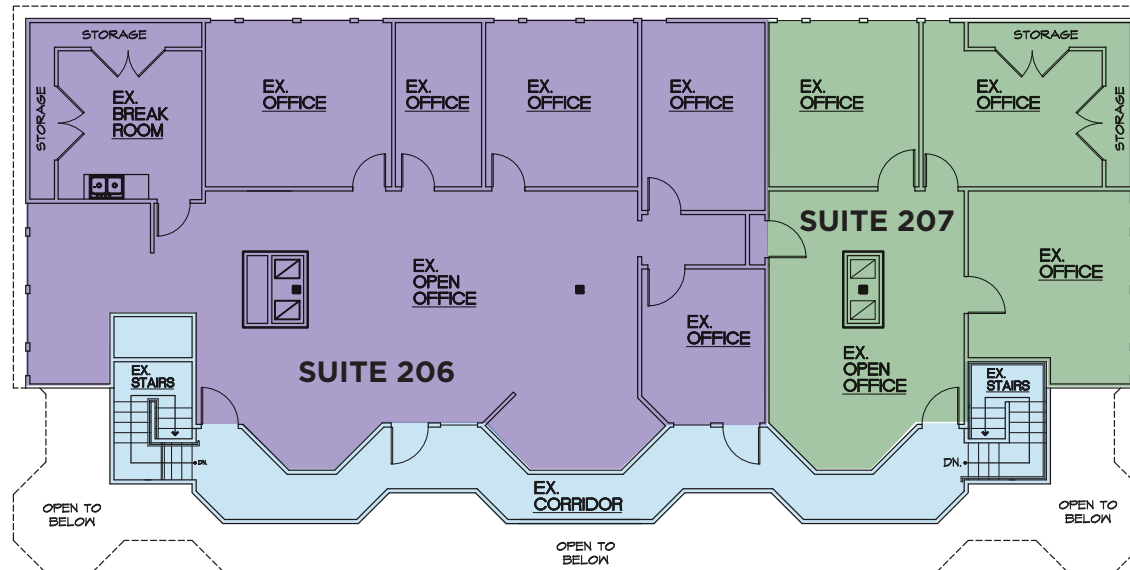
FLOOR PLANS



THE COPPER-TOP BUILDING
100 BRUSH CREEK ROAD
SANTA ROSA, CA

FOR SALE/LEASE

SECOND FLOOR



SUITE	RSF	LEASE
206	2,430+/-	Lease Month/Month
207	1,201+/-	Vacant

PRESENTED BY:

BRIAN KEEGAN, PARTNER
KEEGAN & COPPIN CO., INC.
LIC # 00835502 (707) 528-1400, EXT 249
BKEEGAN@KEEGANCOPPIN.COM

KEVIN FLAHERTY, BROKER ASSOCIATE
KEEGAN & COPPIN CO., INC.
LIC # 01855674 (707) 528-1400, EXT. 246
KFLAHERTY@KEEGANCOPPIN.COM

The above information, while not guaranteed, has been secured from sources we believe to be reliable. Submitted subject to error, change or withdrawal. An interested party should verify the status of the property and the information herein.



AREA DESCRIPTION



THE COPPER-TOP BUILDING
100 BRUSH CREEK ROAD
SANTA ROSA, CA

FOR SALE/LEASE

DESCRIPTION OF AREA

This east Santa Rosa location provides easy access to the Downtown commercial area as well as the Fountaingrove Parkway, which allows for access to northern region of the city. The property sits along Brush Creek and has a scenic trail that runs along the property and continues on to where Brush Creek joins Santa Rosa Creek.

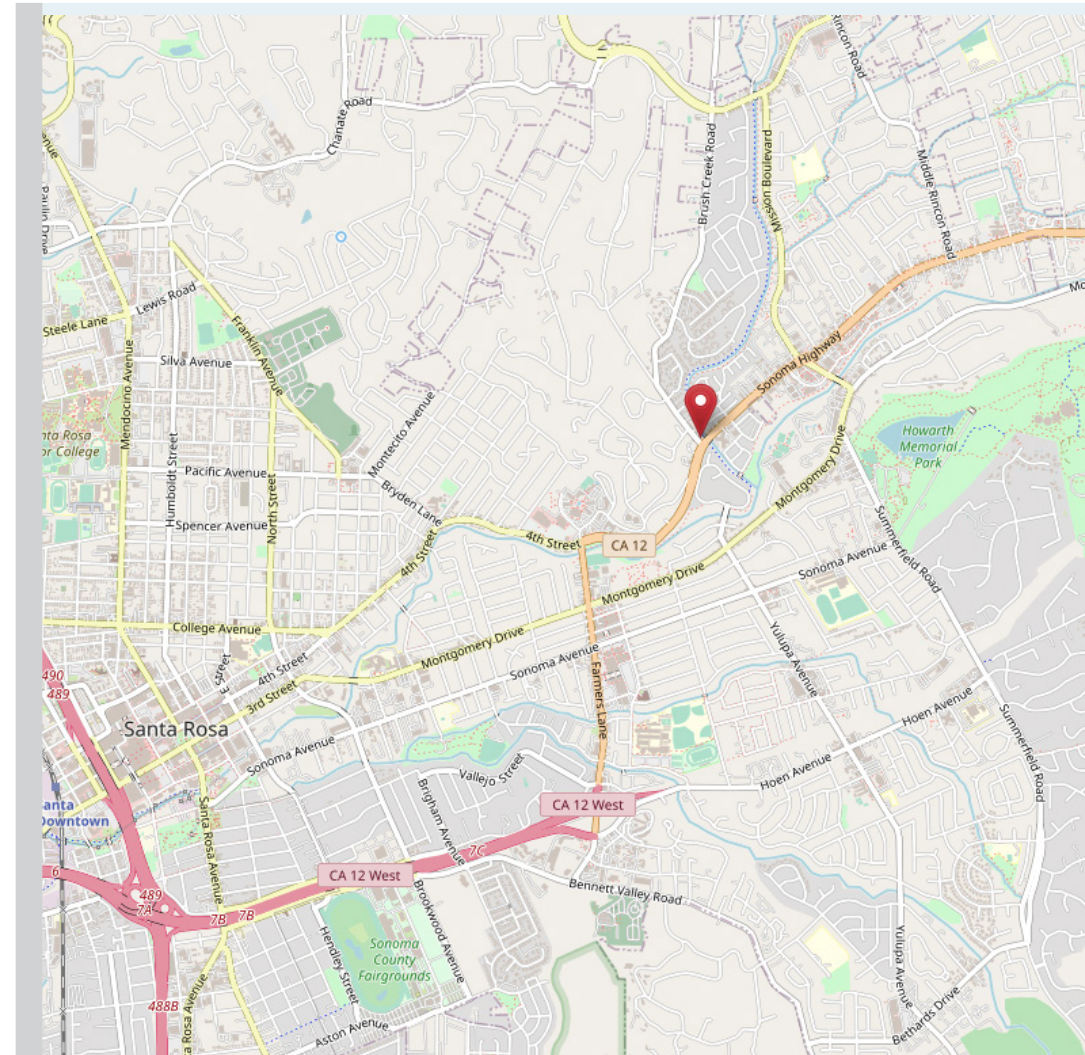
NEARBY AMENITIES

Near two high-traffic intersections containing many amenities, including:

- Safeway Grocery Store
- CVS Drug Store
- Banks Including: Wells Fargo, Redwood Credit Union, Bank of the West, & more
- Gas Stations
- Historic Flamingo Resort
- Restaurants Including: Hanks Creekside, Jeffrey's Hillside, IHOP, Yeti Restaurant, McDonald's, Starbucks, & more
- To the east lies Rincon Valley and the gateway to the Sonoma Valley Wine Region known for world-class wine varietals

TRANSPORTATION ACCESS

- Direct Access to Sonoma Highway 12
- Easy Access to Highway 101 Via Sonoma Highway 12 & Farmers Lane
- Nearby Santa Rosa Transit Bus-Stops



PRESENTED BY:

BRIAN KEEGAN, PARTNER
KEEGAN & COPPIN CO., INC.
LIC # 00835502 (707) 528-1400, EXT 249
BKEEGAN@KEEGANCOPPIN.COM

KEVIN FLAHERTY, BROKER ASSOCIATE
KEEGAN & COPPIN CO., INC.
LIC # 01855674 (707) 528-1400, EXT. 246
KFLAHERTY@KEEGANCOPPIN.COM

The above information, while not guaranteed, has been secured from sources we believe to be reliable. Submitted subject to error, change or withdrawal. An interested party should verify the status of the property and the information herein.

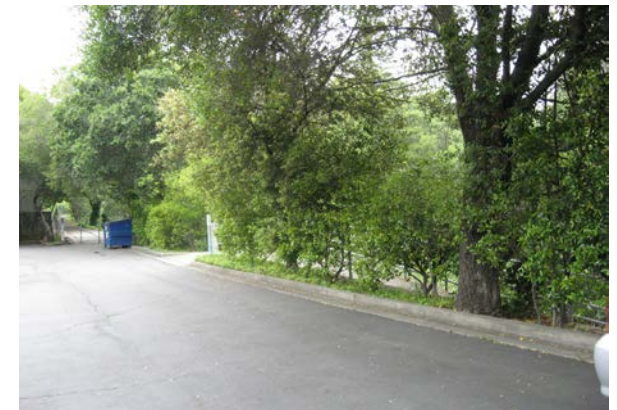
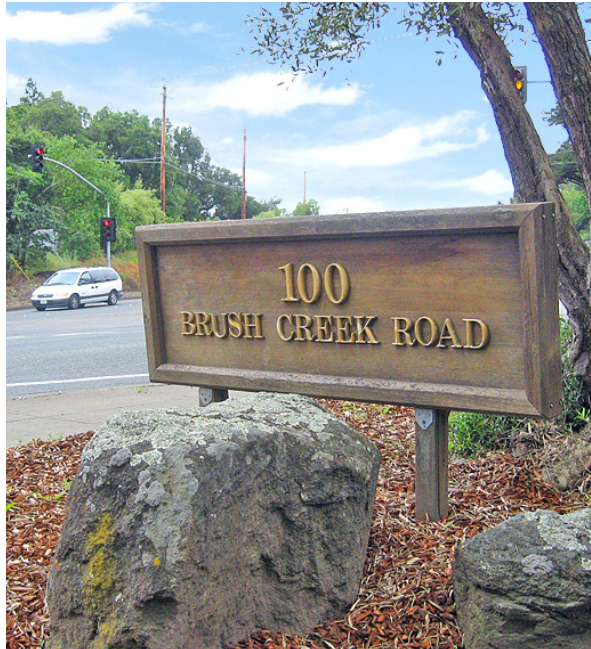


PROPERTY PHOTOS



THE COPPER-TOP BUILDING
100 BRUSH CREEK ROAD
SANTA ROSA, CA

FOR SALE/LEASE



PRESENTED BY:

BRIAN KEEGAN, PARTNER
KEEGAN & COPPIN CO., INC.
LIC # 00835502 (707) 528-1400, EXT 249
BKEEGAN@KEEGANCOPPIN.COM

KEVIN FLAHERTY, BROKER ASSOCIATE
KEEGAN & COPPIN CO., INC.
LIC # 01855674 (707) 528-1400, EXT. 246
KFLAHERTY@KEEGANCOPPIN.COM

The above information, while not guaranteed, has been secured from sources we believe to be reliable. Submitted subject to error, change or withdrawal. An interested party should verify the status of the property and the information herein.



PROPERTY PHOTOS



THE COPPER-TOP BUILDING
100 BRUSH CREEK ROAD
SANTA ROSA, CA

FOR SALE/LEASE



PRESENTED BY:

BRIAN KEEGAN, PARTNER
KEEGAN & COPPIN CO., INC.
LIC # 00835502 (707) 528-1400, EXT 249
BKEEGAN@KEEGANCOPPIN.COM

KEVIN FLAHERTY, BROKER ASSOCIATE
KEEGAN & COPPIN CO., INC.
LIC # 01855674 (707) 528-1400, EXT. 246
KFLAHERTY@KEEGANCOPPIN.COM

The above information, while not guaranteed, has been secured from sources we believe to be reliable. Submitted subject to error, change or withdrawal. An interested party should verify the status of the property and the information herein.



ABOUT KEEGAN & COPPIN



THE COPPER-TOP BUILDING
100 BRUSH CREEK ROAD
SANTA ROSA, CA

FOR SALE/LEASE



Your partner in commercial real estate in the North Bay & beyond since 1976.

Keegan & Coppin has served our communities in the North Bay for well over 40 years. But our unmatched local experience is only part of what makes us the area's most trusted name in commercial real estate. At Keegan & Coppin, we bring together a range of services that go beyond traditional brokerage. That depth of knowledge and diverse skillset allows us to clarify and streamline all aspects of your transaction, giving you the confidence of knowing that we can help with anything that comes up through all phases of a project.

Keegan & Coppin Company, Inc.

The above information, while not guaranteed, has been secured from sources we believe to be reliable. Submitted subject to error, change or withdrawal. An interested party should verify the status of the property and the information herein.



DISCLAIMER



THE COPPER-TOP BUILDING
100 BRUSH CREEK ROAD
SANTA ROSA, CA

FOR SALE/LEASE

DISCLAIMER

This property is being offered on an as-is basis. While the Broker believes the information in this brochure to be accurate, no warranty or representation is made as to its accuracy or completeness. Interested parties should conduct independent investigations and reach conclusions without reliance on materials contained in this brochure.

This property owner requests that you do not disturb the Tenants, as the property will only be shown in coordination with the Listing Agent.

This brochure is presented under the terms and conditions of the Confidentiality Agreement. As such, the material contained in this brochure is confidential and is provided solely for the purpose of considering the purchase of the property described herein. Offers should be presented to the agent for the property owner. Prospective buyers are encouraged to provide buyer's background, source of funds and any other information that would indicate their ability to complete the transaction smoothly.

Keegan & Coppin Co., Inc.
1355 N Dutton Ave.
Santa Rosa, CA 95401
www.keegancoppin.com
(707) 528-1400

The above information, while not guaranteed, has been secured from sources we believe to be reliable. Submitted subject to error, change or withdrawal. An interested party should verify the status of the property and the information herein.

PRESENTED BY:

BRIAN KEEGAN, PARTNER
LIC # 01809537 (707) 528-1400, EXT 249
BKEEGAN@KEEGANCOPPIN.COM

KEVIN FLAHERTY, BROKER ASSOCIATE
LIC # 01855674 (707) 528-1400 EXT. 246
KFLAHERTY@KEEGANCOPPIN.COM